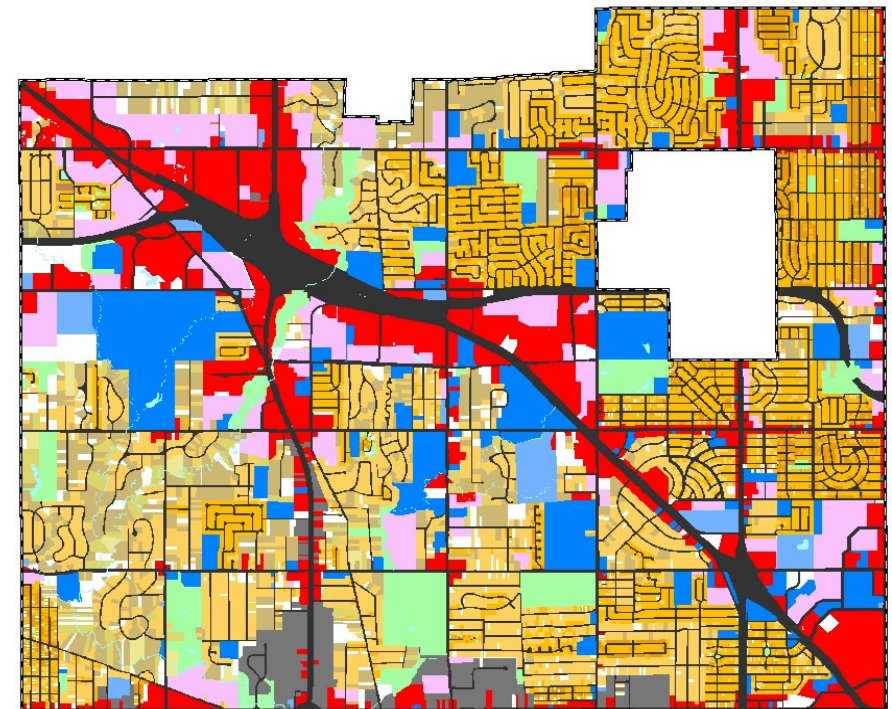
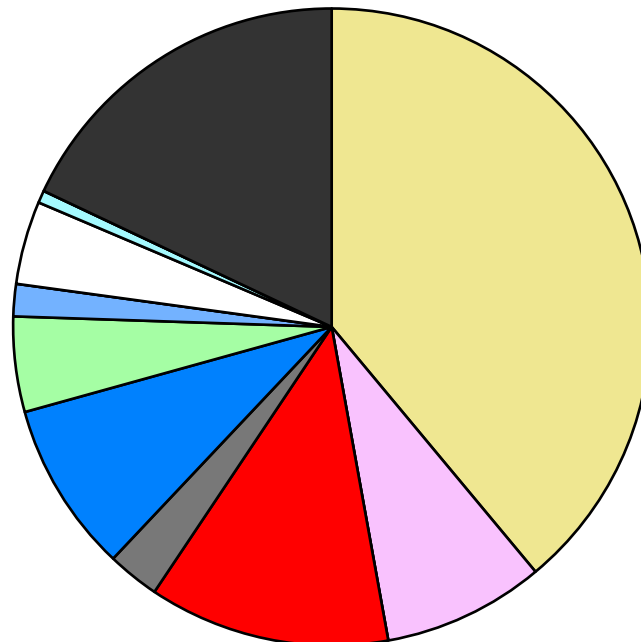


Land Use	Area (ac.)	Area (%)	Parcels	Parcels (%)
Agricultural				
Single Family Residential	6,550.7	38.9%	16,978	87.6%
Multiple Family	1,381.0	8.2%	167	0.9%
Mobile Home Park				
Commercial/Office	2,057.9	12.2%	905	4.7%
Industrial	445.6	2.6%	181	0.9%
Public/Institutional	1,455.7	8.7%	155	0.8%
Recreation/Conservation	814.0	4.8%	112	0.6%
Transp./Utility/Comm.	275.3	1.6%	35	0.2%
Extractive				
Vacant	709.7	4.2%	853	4.4%
Water	106.4	0.6%		
Railroad Right-of-Way				
Road Right-of-Way	3,022.8	18.0%		
Total	16,819.0	100.0%	19,386	100.0%

Single Family By Lot Size	Area (ac.)	Area (%)	Parcels	Parcels (%)
10 acres or greater				
5 to 9.9 acres	74.1	1.1%	11	0.1%
2.5 to 4.9 acres	218.3	3.3%	69	0.4%
1 to 2.4 acres	1,214.7	18.5%	861	5.1%
14,000 to 43,559 sq. ft.	2,557.5	39.0%	4,644	27.4%
8,000 to 13,999 sq. ft.	2,112.1	32.2%	9,061	53.4%
Less than 8,000 sq. ft.	369.6	5.6%	2,330	13.7%
More than one unit per parcel	4.4	0.1%	2	0.0%
Single Family Sub-total	6,550.7	100.0%	16,978	100.0%

Land Use by Area

- Agricultural
- Single Family Residential
- Multiple Family
- Mobile Home Park
- Commercial/Office
- Industrial
- Public/Institutional
- Recreation/Conservation
- Transp./Utility/Comm.
- Extractive
- Vacant
- Water
- Railroad Right-of-Way
- Road Right-of-Way



For more information, maps, or questions about this data, please contact the Oakland County Planning at (248) 858-0720.