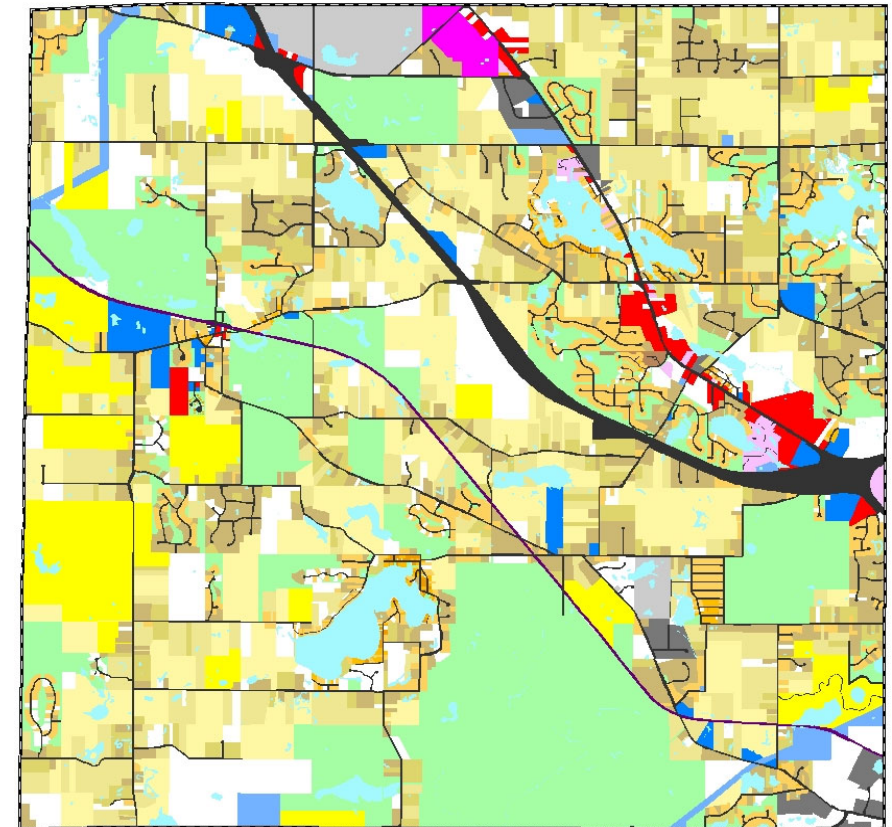
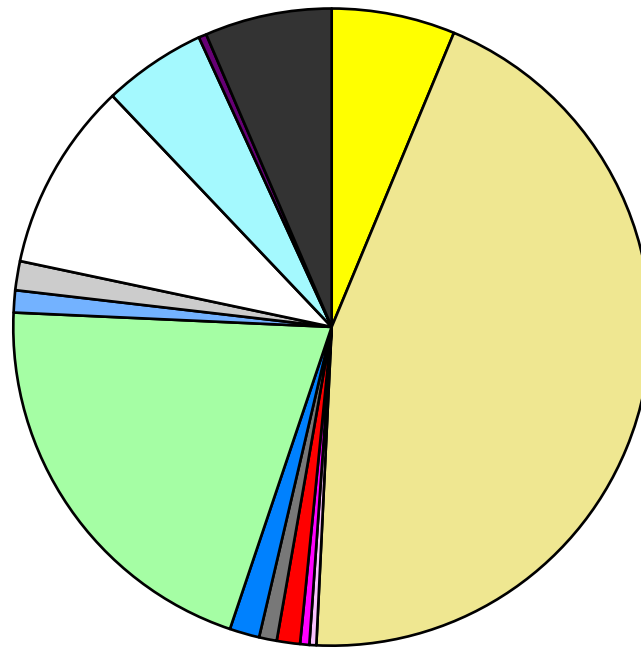


Land Use	Area (ac.)	Area (%)	Parcels	Parcels (%)
Agricultural	1,468.8	6.3%	35	0.6%
Single Family Residential	10,435.6	44.5%	4,688	81.9%
Multiple Family	83.7	0.4%	20	0.3%
Mobile Home Park	110.9	0.5%	2	0.0%
Commercial/Office	275.7	1.2%	80	1.4%
Industrial	210.0	0.9%	72	1.3%
Public/Institutional	354.0	1.5%	32	0.6%
Recreation/Conservation	4,818.2	20.5%	206	3.6%
Transp./Utility/Comm.	263.9	1.1%	18	0.3%
Extractive	348.2	1.5%	5	0.1%
Vacant	2,249.3	9.6%	565	9.9%
Water	1,228.0	5.2%		
Railroad Right-of-Way	91.7	0.4%		
Road Right-of-Way	1,512.4	6.4%		
Total	23,450.3	100.0%	5,723	100.0%

Single Family By Lot Size	Area (ac.)	Area (%)	Parcels	Parcels (%)
10 acres or greater	3,249.4	31.1%	191	4.1%
5 to 9.9 acres	2,424.9	23.2%	305	6.5%
2.5 to 4.9 acres	1,246.8	11.9%	343	7.3%
1 to 2.4 acres	2,173.1	20.8%	1,385	29.5%
14,000 to 43,559 sq. ft.	1,236.5	11.8%	2,047	43.7%
8,000 to 13,999 sq. ft.	69.3	0.7%	270	5.8%
Less than 8,000 sq. ft.	20.4	0.2%	145	3.1%
More than one unit per parcel	15.1	0.1%	2	0.0%
Single Family Sub-total	10,435.6	100.0%	4,688	100.0%

Land Use by Area

- Agricultural
- Single Family Residential
- Multiple Family
- Mobile Home Park
- Commercial/Office
- Industrial
- Public/Institutional
- Recreation/Conservation
- Transp./Utility/Comm.
- Extractive
- Vacant
- Water
- Railroad Right-of-Way
- Road Right-of-Way



For more information, maps, or questions about this data, please contact the Oakland County Planning at (248) 858-0720.