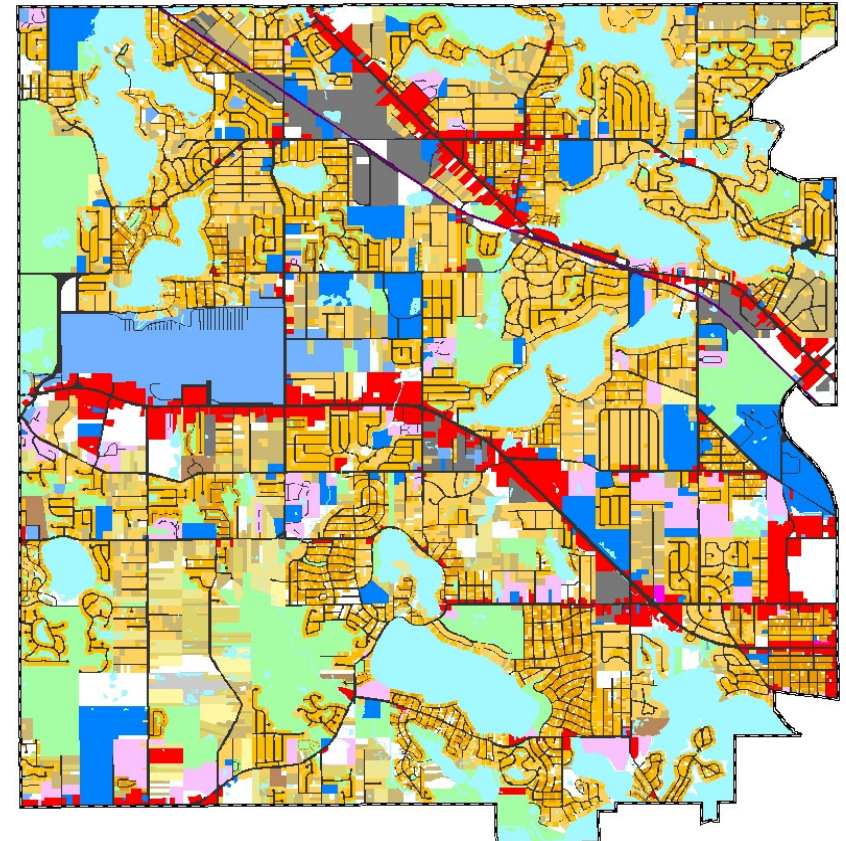
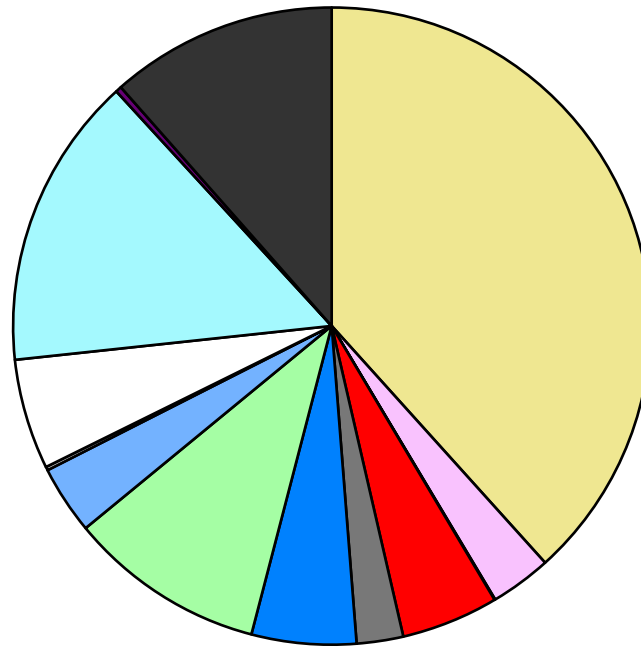


Land Use	Area (ac.)	Area (%)	Parcels	Parcels (%)
Agricultural				
Single Family Residential	8,652.9	38.3%	23,875	84.6%
Multiple Family	700.7	3.1%	121	0.4%
Mobile Home Park	7.8	0.0%	2	0.0%
Commercial/Office	1,112.8	4.9%	1,048	3.7%
Industrial	534.2	2.4%	192	0.7%
Public/Institutional	1,199.4	5.3%	170	0.6%
Recreation/Conservation	2,256.8	10.0%	426	1.5%
Transp./Utility/Comm.	781.6	3.5%	158	0.6%
Extractive	42.6	0.2%	3	0.0%
Vacant	1,263.3	5.6%	2,229	7.9%
Water	3,359.1	14.9%		
Railroad Right-of-Way	67.3	0.3%		
Road Right-of-Way	2,600.4	11.5%		
Total	22,579.0	100.0%	28,224	100.0%

Single Family By Lot Size	Area (ac.)	Area (%)	Parcels	Parcels (%)
10 acres or greater	129.9	1.5%	9	0.0%
5 to 9.9 acres	296.3	3.4%	42	0.2%
2.5 to 4.9 acres	293.1	3.4%	81	0.3%
1 to 2.4 acres	1,036.1	12.0%	729	3.1%
14,000 to 43,559 sq. ft.	3,286.9	38.0%	7,023	29.4%
8,000 to 13,999 sq. ft.	2,811.8	32.5%	11,121	46.6%
Less than 8,000 sq. ft.	720.2	8.3%	4,861	20.4%
More than one unit per parcel	78.6	0.9%	9	0.0%
Single Family Sub-total	8,652.9	100.0%	23,875	100.0%

Land Use by Area

- Agricultural
- Single Family Residential
- Multiple Family
- Mobile Home Park
- Commercial/Office
- Industrial
- Public/Institutional
- Recreation/Conservation
- Transp./Utility/Comm.
- Extractive
- Vacant
- Water
- Railroad Right-of-Way
- Road Right-of-Way



For more information, maps, or questions about this data, please contact the Oakland County Planning at (248) 858-0720.