

Township of West Bloomfield

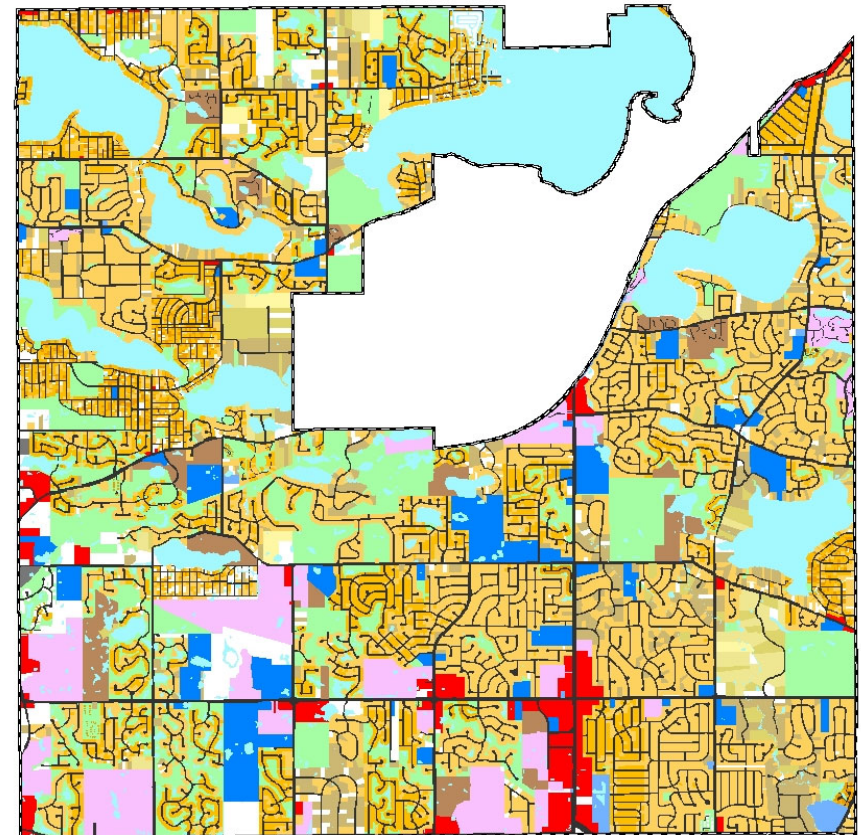
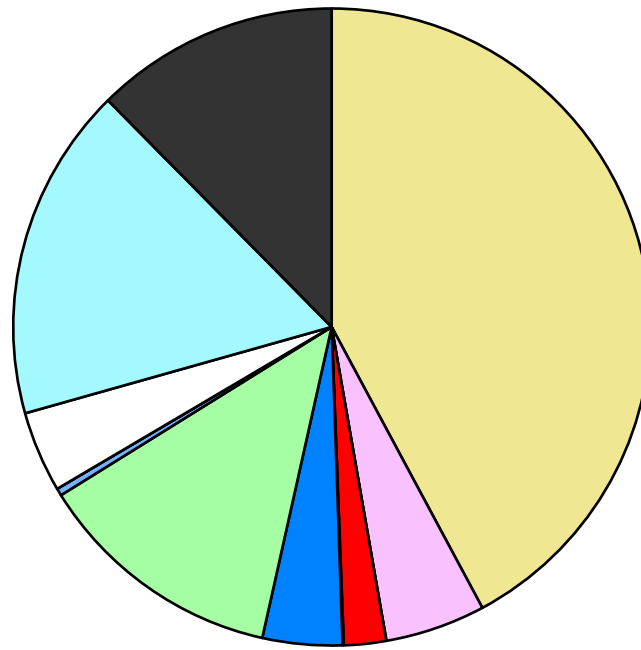
2021 Land Use Statistics

| Land Use | Area (ac.) | Area (%) | Parcels | Parcels (%) |
|---------------------------|-----------------|---------------|---------------|---------------|
| Agricultural | | | | |
| Single Family Residential | 8,451.8 | 42.2% | 18,816 | 89.6% |
| Multiple Family | 1,020.9 | 5.1% | 75 | 0.4% |
| Mobile Home Park | | | | |
| Commercial/Office | 427.8 | 2.1% | 208 | 1.0% |
| Industrial | 14.3 | 0.1% | 3 | 0.0% |
| Public/Institutional | 809.1 | 4.0% | 71 | 0.3% |
| Recreation/Conservation | 2,536.6 | 12.7% | 495 | 2.4% |
| Transp./Utility/Comm. | 74.5 | 0.4% | 19 | 0.1% |
| Extractive | | | | |
| Vacant | 822.6 | 4.1% | 1,302 | 6.2% |
| Water | 3,402.1 | 17.0% | | |
| Railroad Right-of-Way | | | | |
| Road Right-of-Way | 2,484.9 | 12.4% | | |
| Total | 20,044.5 | 100.0% | 20,989 | 100.0% |

| Single Family By Lot Size | Area (ac.) | Area (%) | Parcels | Parcels (%) |
|--------------------------------|----------------|---------------|---------------|---------------|
| 10 acres or greater | 94.8 | 1.1% | 7 | 0.0% |
| 5 to 9.9 acres | 179.1 | 2.1% | 28 | 0.1% |
| 2.5 to 4.9 acres | 266.5 | 3.2% | 73 | 0.4% |
| 1 to 2.4 acres | 869.4 | 10.3% | 636 | 3.4% |
| 14,000 to 43,559 sq. ft. | 4,642.0 | 54.9% | 10,190 | 54.2% |
| 8,000 to 13,999 sq. ft. | 1,788.0 | 21.2% | 6,738 | 35.8% |
| Less than 8,000 sq. ft. | 155.1 | 1.8% | 1,120 | 6.0% |
| More than one unit per parcel | 456.9 | 5.4% | 24 | 0.1% |
| Single Family Sub-total | 8,451.8 | 100.0% | 18,816 | 100.0% |

Land Use by Area

- Agricultural
- Single Family Residential
- Multiple Family
- Mobile Home Park
- Commercial/Office
- Industrial
- Public/Institutional
- Recreation/Conservation
- Transp./Utility/Comm.
- Extractive
- Vacant
- Water
- Railroad Right-of-Way
- Road Right-of-Way



For more information, maps, or questions about this data, please contact the Oakland County Planning at (248) 858-0720.