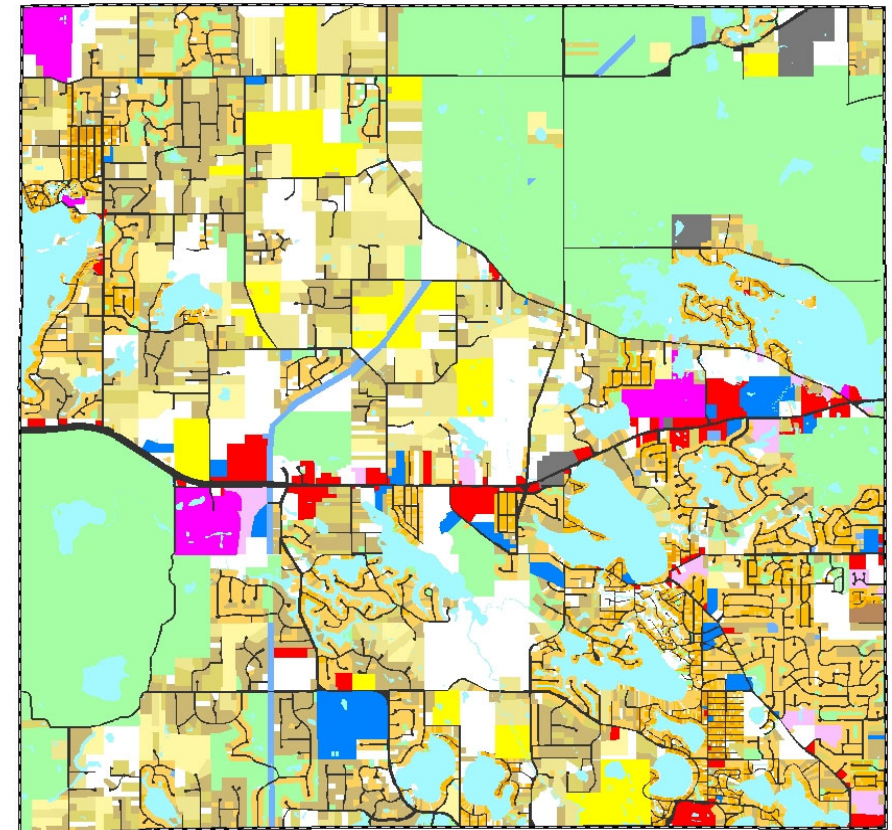
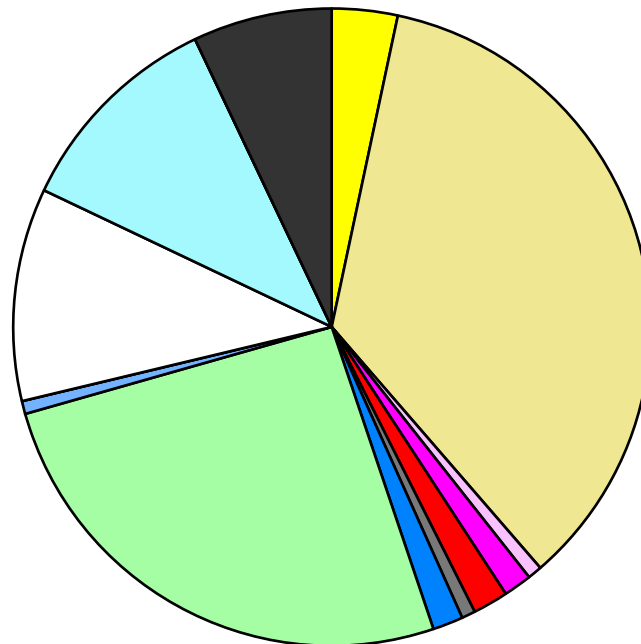


Land Use	Area (ac.)	Area (%)	Parcels	Parcels (%)
Agricultural	791.1	3.3%	27	0.2%
Single Family Residential	8,374.6	35.3%	10,033	84.9%
Multiple Family	171.1	0.7%	45	0.4%
Mobile Home Park	338.6	1.4%	10	0.1%
Commercial/Office	424.3	1.8%	156	1.3%
Industrial	165.0	0.7%	22	0.2%
Public/Institutional	366.1	1.5%	43	0.4%
Recreation/Conservation	6,114.7	25.8%	290	2.5%
Transp./Utility/Comm.	156.7	0.7%	24	0.2%
Extractive				
Vacant	2,560.8	10.8%	1,164	9.9%
Water	2,579.6	10.9%		
Railroad Right-of-Way				
Road Right-of-Way	1,674.3	7.1%		
Total	23,716.8	100.0%	11,814	100.0%

Single Family By Lot Size	Area (ac.)	Area (%)	Parcels	Parcels (%)
10 acres or greater	918.3	11.0%	62	0.6%
5 to 9.9 acres	1,179.6	14.1%	147	1.5%
2.5 to 4.9 acres	984.3	11.8%	269	2.7%
1 to 2.4 acres	2,125.9	25.4%	1,512	15.1%
14,000 to 43,559 sq. ft.	2,354.5	28.1%	4,535	45.2%
8,000 to 13,999 sq. ft.	652.7	7.8%	2,533	25.2%
Less than 8,000 sq. ft.	140.4	1.7%	974	9.7%
More than one unit per parcel	19.1	0.2%	1	0.0%
Single Family Sub-total	8,374.6	100.0%	10,033	100.0%

Land Use by Area

- Agricultural
- Single Family Residential
- Multiple Family
- Mobile Home Park
- Commercial/Office
- Industrial
- Public/Institutional
- Recreation/Conservation
- Transp./Utility/Comm.
- Extractive
- Vacant
- Water
- Railroad Right-of-Way
- Road Right-of-Way



For more information, maps, or questions about this data, please contact the Oakland County Planning at (248) 858-0720.