

April 2019 Flu Data

Oakland County
Health Division

Communicable
Disease Unit

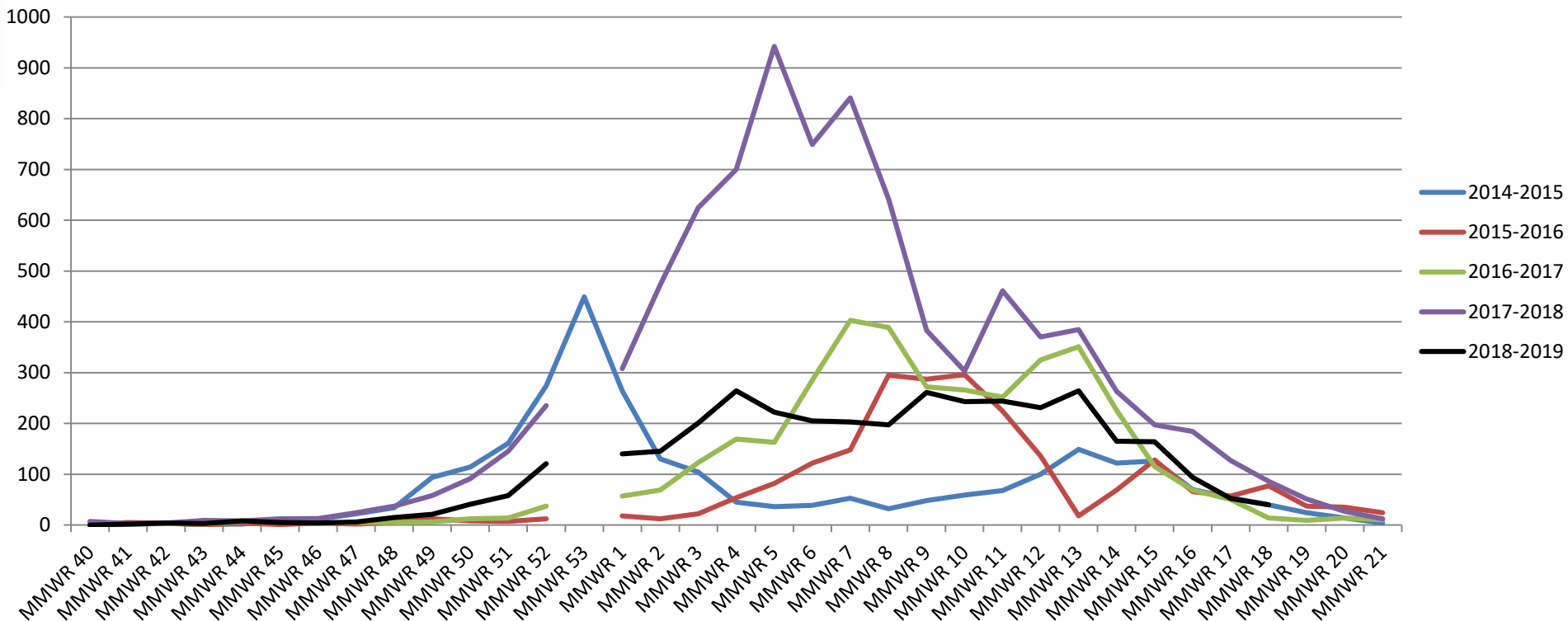


HEALTH DIVISION

OakGov.com/Health

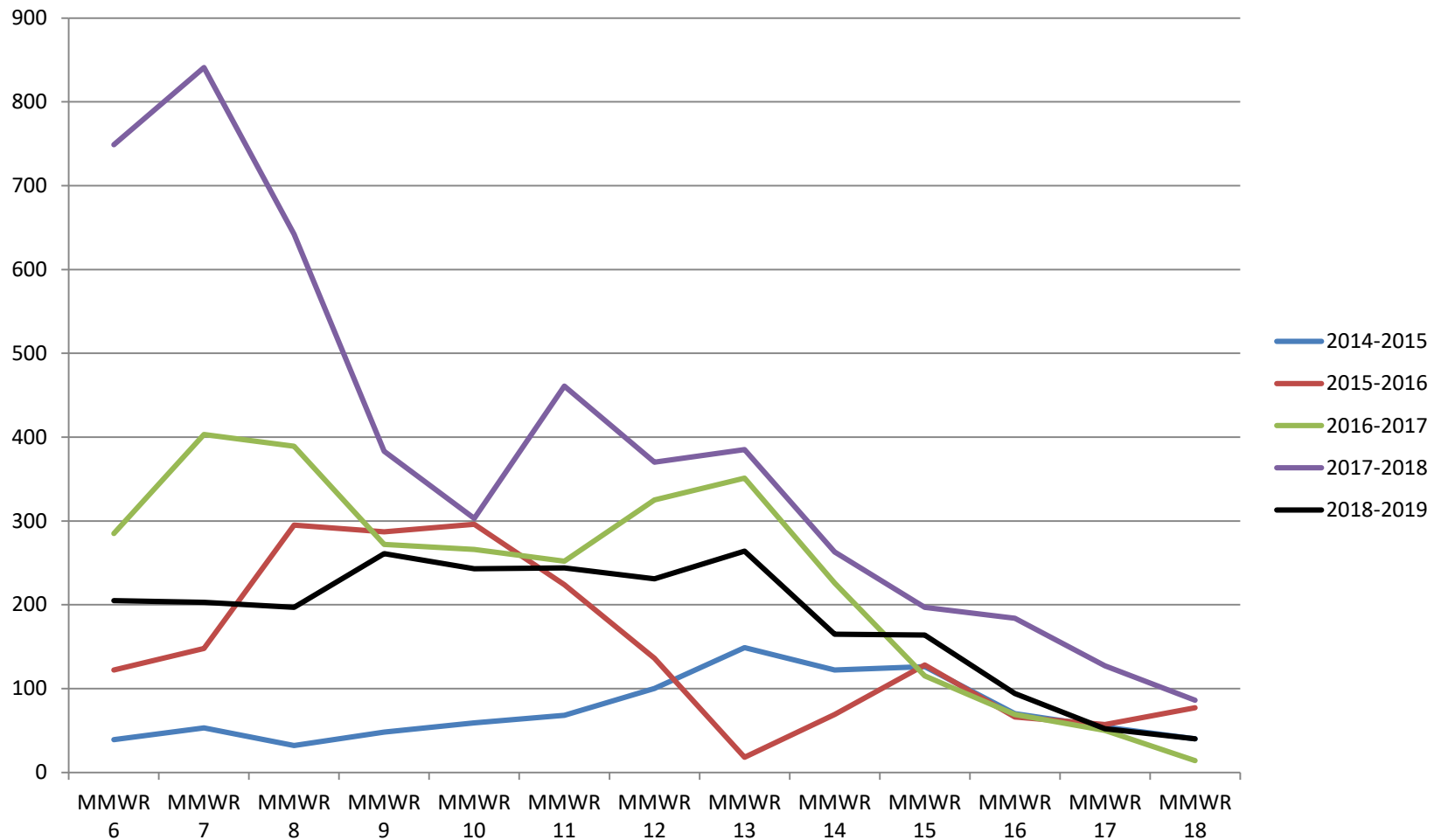


Confirmed and Probable Flu Cases by MMWR Week Oakland County, 2014-2019

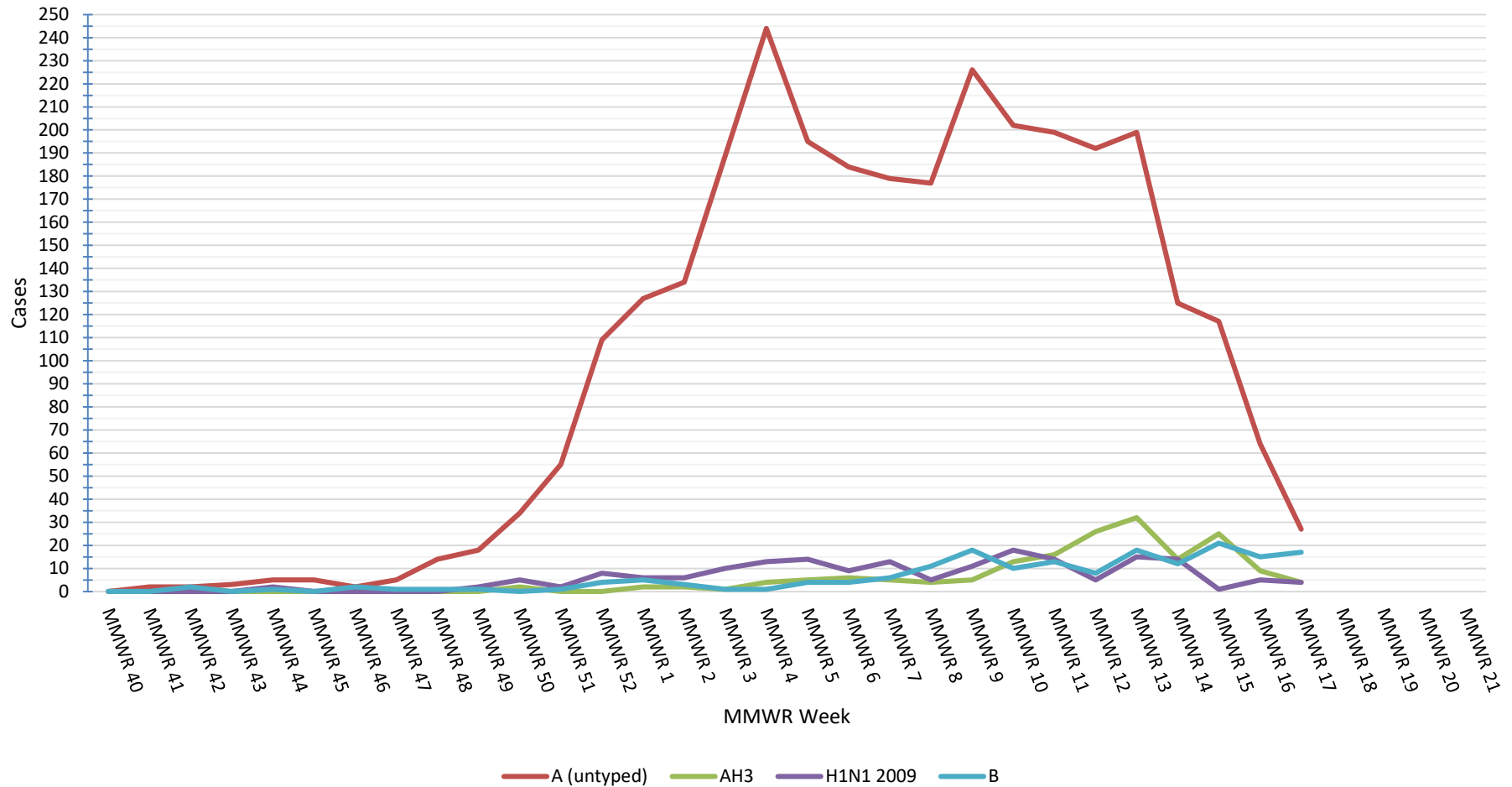


Confirmed and Probable Flu Cases by MMWR Week

Detail Graph



Confirmed and Probable Flu Strains By MMWR Week, 2018-2019 Season



OCHD 2018-2019 Influenza Seasonal Data as of Week 18 (May 4, 2019)

- **Individual Case Reports**

- There have been 3,623 individual cases of influenza reported to the Oakland County Health Division thus far during the 2018-2019 flu season (beginning MMWR Week 41 2018).
 - 2,843 cases were **confirmed** either by viral culture or PCR
 - All had their testing results entered
 - 95.5% were positive for Influenza A
 - 7.0% were positive for Influenza A H1/N1 2009
 - 6.7% were positive for Influenza A H3
 - 2.1% were positive for Influenza B
 - 780 cases had **probable** laboratory testing results, either Rapid Influenza or EIA results
 - All had their testing results entered
 - 90.9% were positive for Influenza A
 - 4.5% were positive for Influenza B

- **Hospitalizations**

- There have been 171 hospitalizations reported to OCHD.

- **Deaths**

- There have been zero (0) pediatric and eight (8) adult influenza associated deaths reported to Oakland County as of May 4, 2019.



HEALTH DIVISION

North Oakland Health Center

1200 N. Telegraph Rd
Pontiac, MI 48341
Phone: 248.858.1280

South Oakland Health Center

27725 Greenfield Rd
Southfield, MI 48076
Phone: 248.424.7000

NURSE ON CALL PUBLIC HEALTH INFORMATION

800.848.5533 NOC@OAKGOV.COM

OAKGOV.COM/HEALTH



@PUBLICHEALTHOC



The Oakland County Health Division will not deny participation in its programs based on race, sex, religion, national origin, age or disability. State and federal eligibility requirements apply for certain programs.