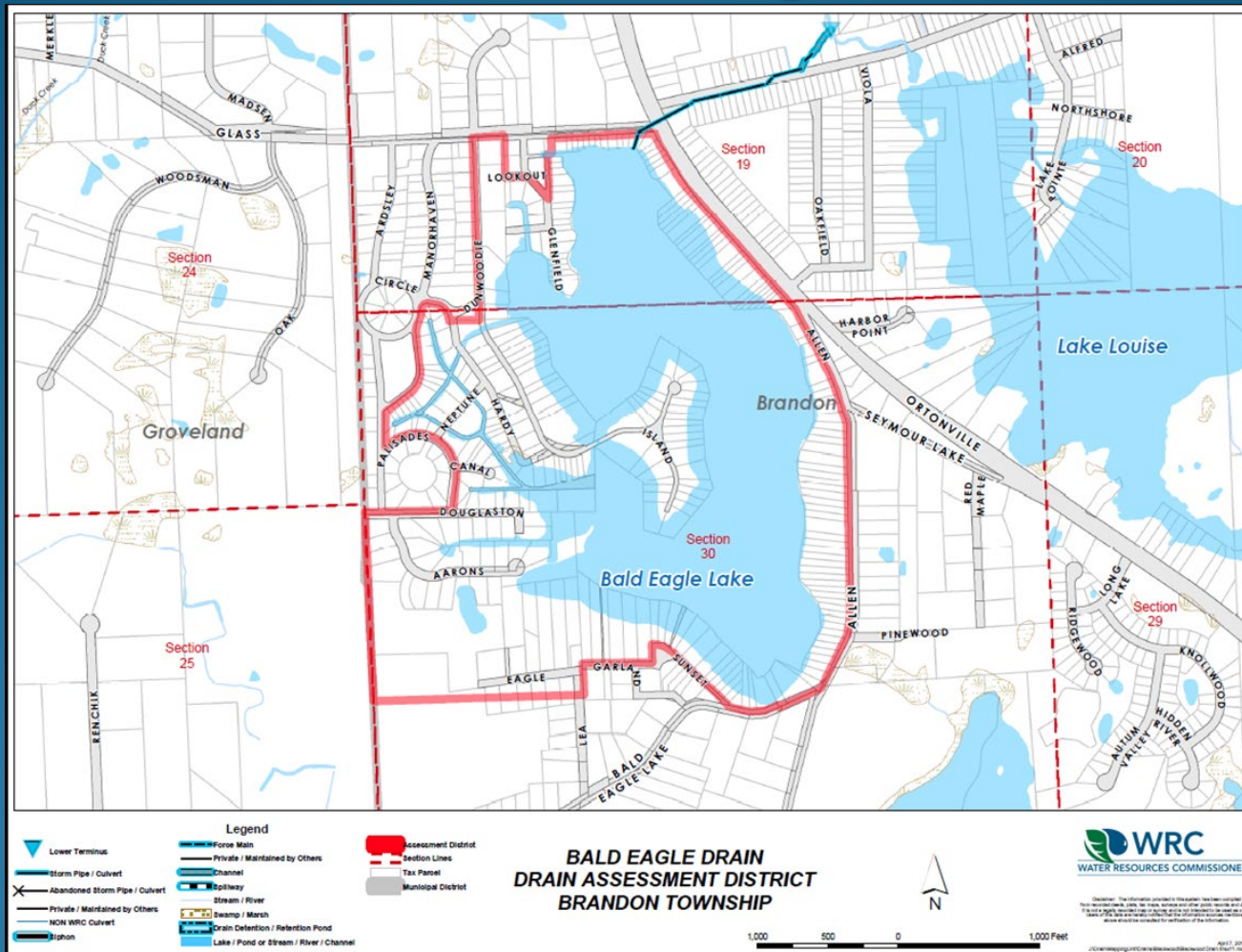
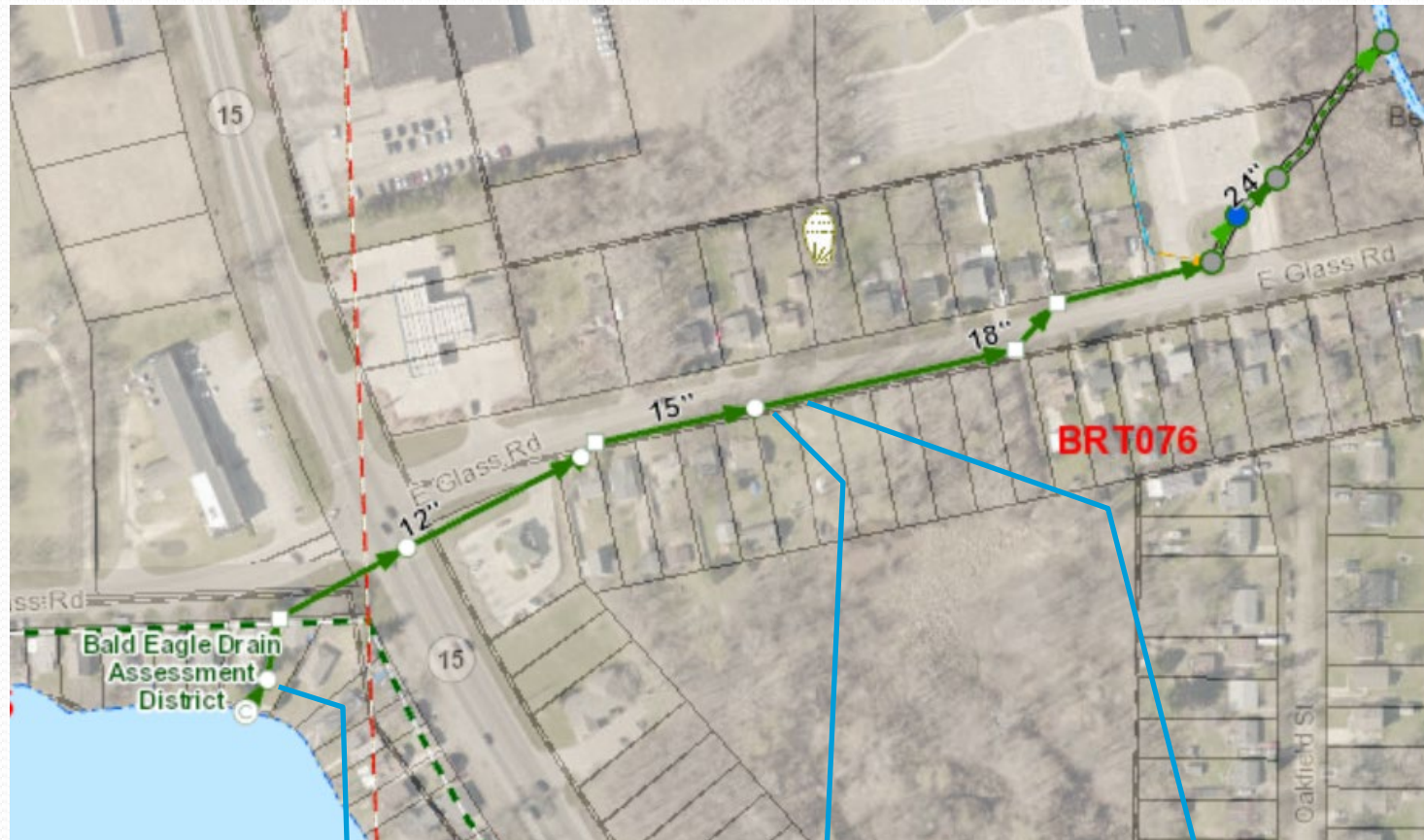


Bald Eagle Lake Drain



Condition Assessment Report
Prepared By: Geoff S. Wilson, P.E.

- Three emergency repairs were required in 2018.
- Emergency 1 required bypass pumping due to lake level rise



Emergency 1: Pipe
failure and lake
structure replacement

Emergency 2:
Pipe failure

Emergency 3:
Pipe failure

- 2018 emergency repairs prompted WRC to investigate other segments of the drain.



Emergency 1: Pipe and structure construction to replace failed pipe



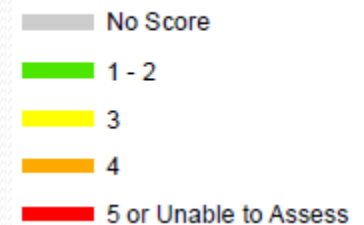
Emergency 3: Sinkhole over failed pipe

Condition Assessment Map



- Segments with a “5” rating are the most severely deteriorated.
- Segments unable to be assessed were due to severe deterioration.

Structural Pipe Rating Index



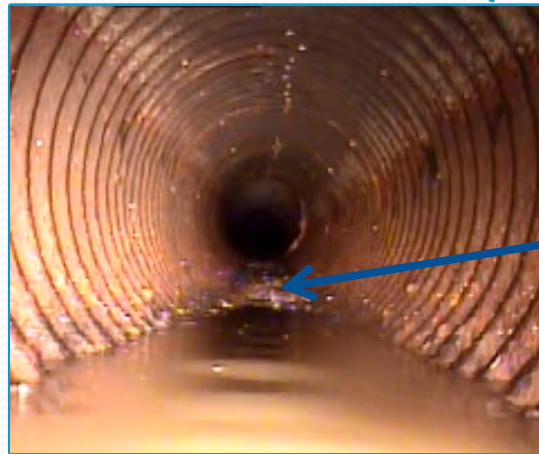
Structural Pipe Rating Index

Grey	No Score
Green	1 - 2
Yellow	3
Orange	4
Red	5 or Unable to Assess

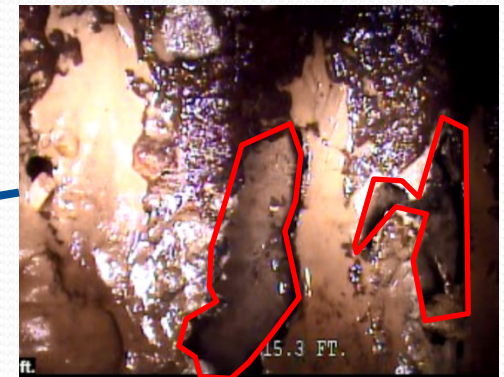
- Typical conditions include corroded metal and small but frequent holes and voids in the pipe.
- Once holes and voids are present, conditions deteriorate rapidly and sinkholes begin to form.
- Sinkholes are expensive to fix and risk property and utility damage.



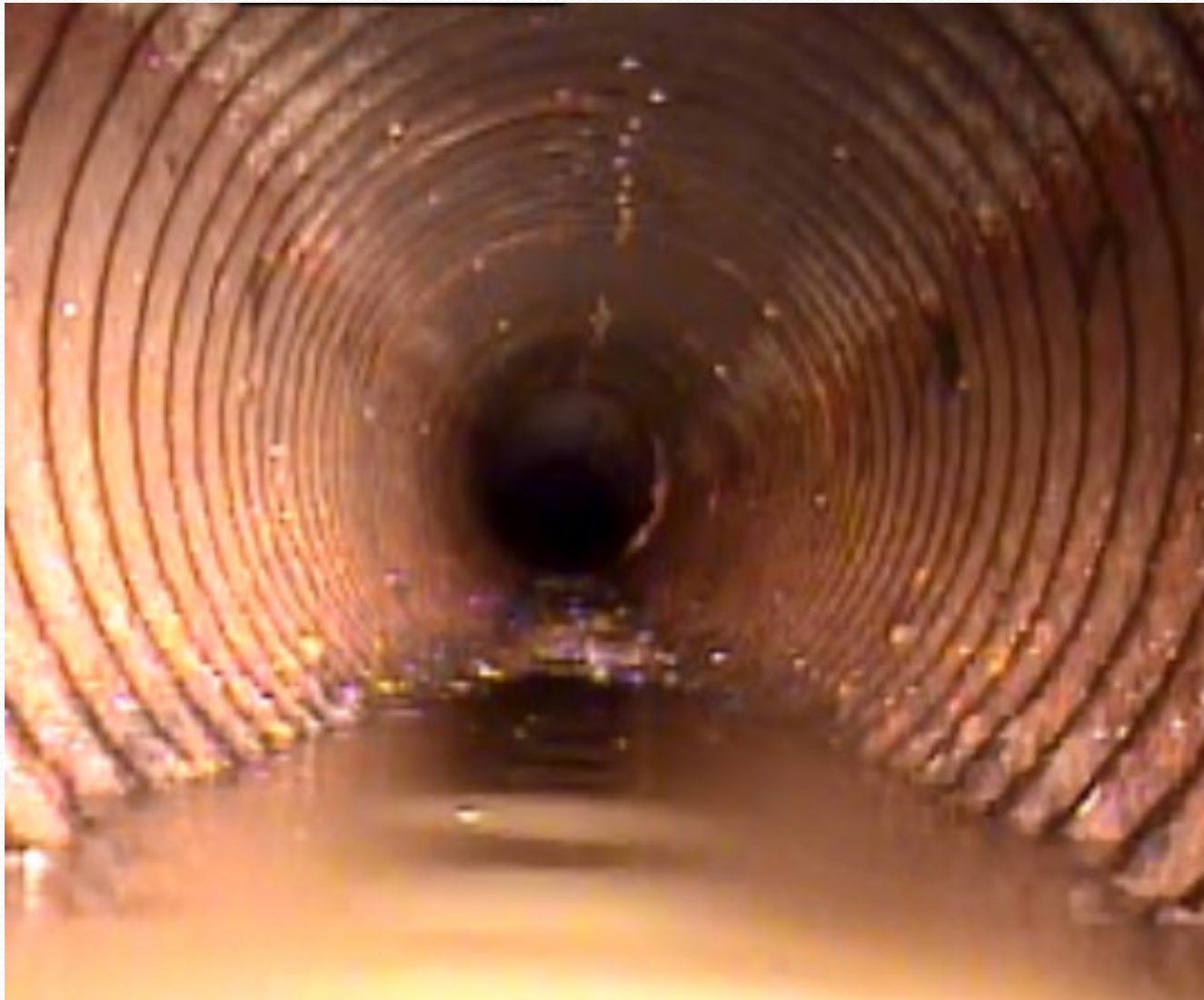
Condition Assessment Map



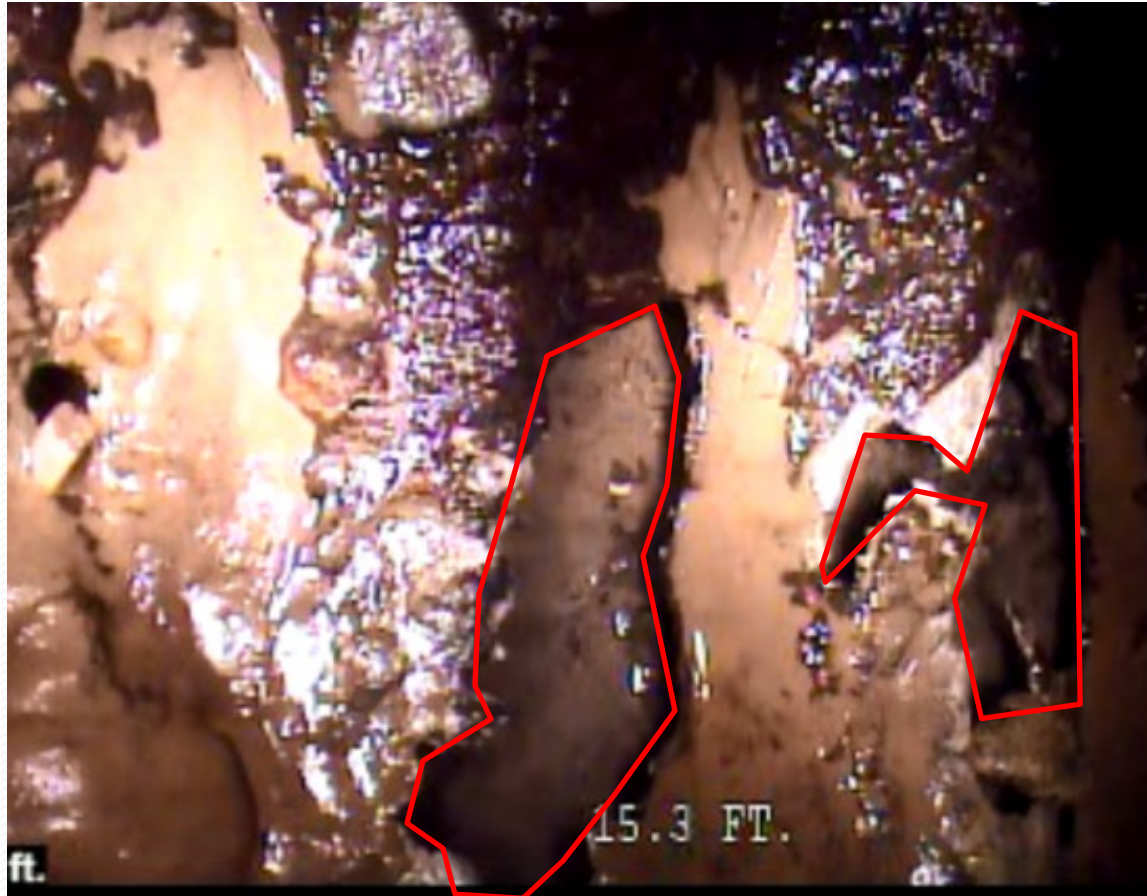
View from inside of pipe (looking upstream)



View of pipe wall (soil visible beyond holes)



View from inside of pipe (looking upstream)



View of pipe wall (soil visible beyond holes)

Conclusion: Most of the pipe segments are in poor condition.