

# FAQs

## FREQUENTLY ASKED QUESTIONS about the Day of Review of Drainage District Boundaries

### *What is a Day of Review of District Boundaries?*

The Michigan Legislature passed a law in 2013 to allow revisions to historical drainage district boundaries when recommended by a licensed engineer.

Property owners can review changes with the Drain Office staff during the Day of Review. The proposed boundary revisions can be found on the map on the reverse side of the notice.

### *What is a Drainage District?*

A drainage district is the land area that benefits from the drain. The drainage district makes up the watershed that contributes water to the drain. Each property and municipality within the drainage district pays for maintenance and improvement of the drain.

### *Why are the boundaries being revised?*

Revisions are recommended because the historic drainage district boundaries do not accurately reflect the current watershed of the drain.

### *Why did I receive a notice?*

Notices went out to the following property owners:

- ***Properties being added to the Drainage District.*** The properties were not previously in the drainage district, but the engineers determined that the properties are within the drain's watershed.
- ***Properties being removed from the Drainage District.*** The properties were previously in the drainage district, but the engineers determined that the properties are not in the drain's watershed.
- ***Properties currently in the Drainage District and proposed to remain in the Drainage District.*** There is no change in terms of boundaries for these properties.

All property owners subject to an assessment were sent a copy of the notice.

### *Do I have to attend the Day of Review?*

You are not required to attend the Day of Review.

### *How can I get more information?*

Visit our website at <https://www.oakgov.com/water/Pages/default.aspx> or call (248) 858-0958.



 APPROXIMATE DRAIN LOCATION  
 APPROXIMATE LOCATION OF OUTLET WATERCOURSE  
 OTHER WATERCOURSES  
 DRAINAGE DISTRICT BOUNDARY  
 STATE ROADS  
 COUNTY ROADS  
 LOCAL ROADS  
 SECTION  
 MUNICIPALITY BOUNDARY

[illegible]

PATH: I:\PROJ2019\126833\SG2019 - BAID EAGLE LAKE DRAIN\GEODATA\BAID EAGLE LAKE DRAIN\DOMRAID EAGLE LAKE DRAIN DOM APPX PRINTED ON: 8/14/2019 BY: JOSEPH BOWSER

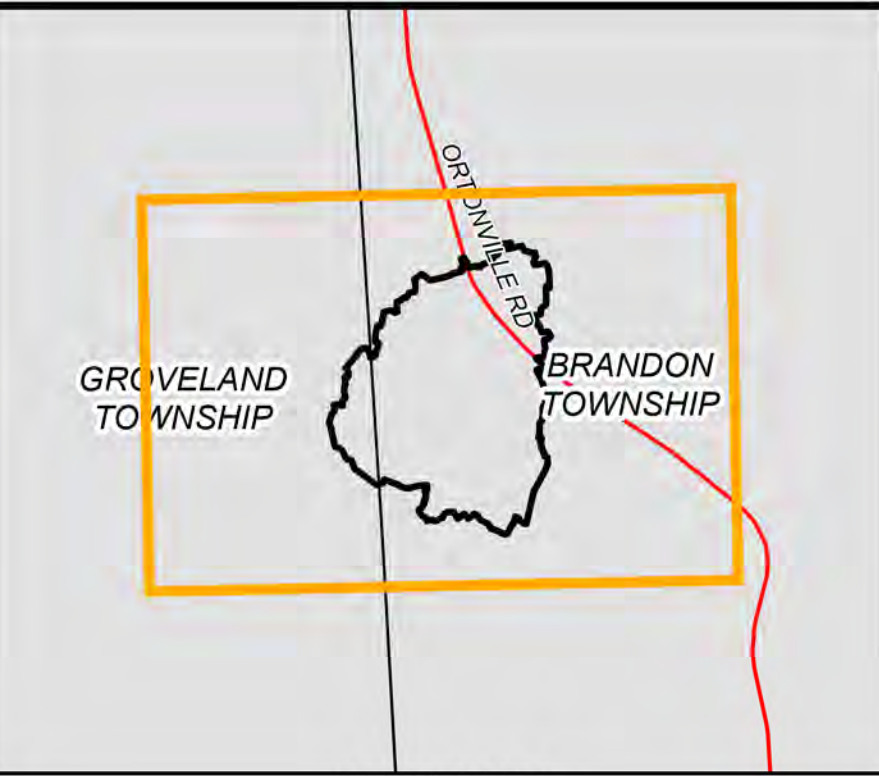


# BALD EAGLE LAKE DRAIN

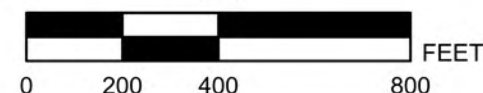
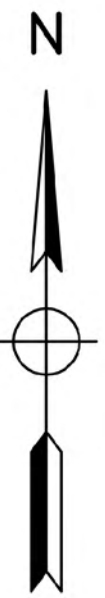
## OAKLAND COUNTY, MICHIGAN

OAKLAND COUNTY WATER RESOURCES COMMISSIONER - JIM NASH

BRANDON TWP.  
GROVELAND TWP.

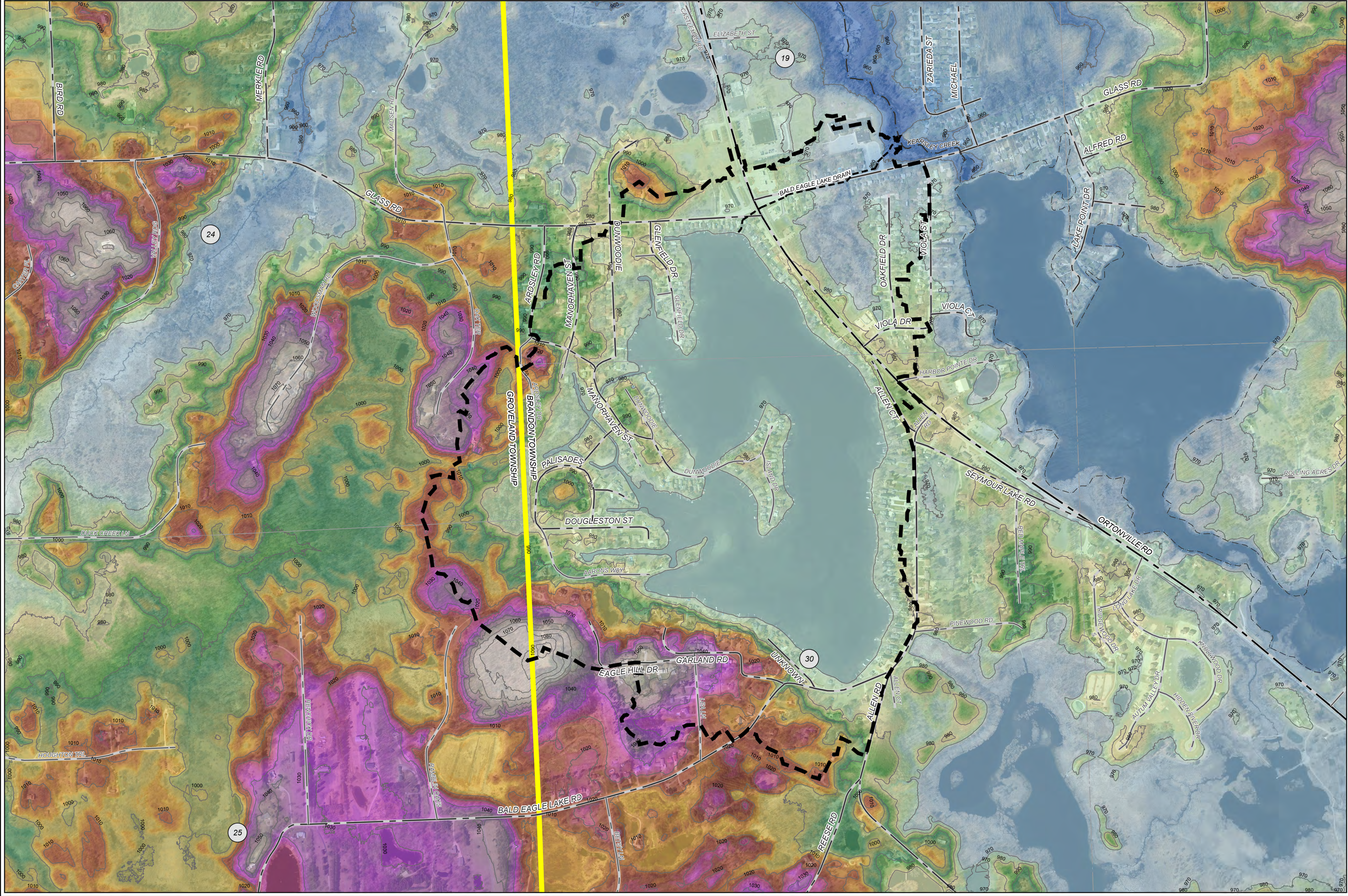


AREA MAP  
NOT TO SCALE



LEGEND

- APPROXIMATE DRAIN LOCATION
- - - APPROXIMATE LOCATION OF OUTLET WATERCOURSE
- - - OTHER WATERCOURSES
- DRAINAGE DISTRICT BOUNDARY
- STATE ROADS
- COUNTY ROADS
- LOCAL ROADS
- # SECTION
- MUNICIPALITY BOUNDARY
- INDEX CONTOURS - 10 FT
- LIDAR ELEVATION
  - 1090 FT
  - 1080 FT
  - 1070 FT
  - 1060 FT
  - 1050 FT
  - 1040 FT
  - 1030 FT
  - 1020 FT
  - 1010 FT
  - 1000 FT
  - 990 FT
  - 980 FT
  - 970 FT
  - 960 FT
  - 950 FT



BY	MARK	REVISIONS	DATE
THE WORK REPRESENTED BY THIS DRAWING WAS DESIGNED BY THE ENGINEER FOR THIS SPECIFIC APPLICATION AND SPECIFIC LOCATION DESCRIBED HEREON IN ACCORDANCE WITH THE CONDITIONS PREVALENT AT THE TIME THE DESIGN WAS DONE. THE ENGINEER DOES NOT GUARANTEE AND WILL NOT BE LIABLE FOR ANY OTHER LOCATION, CONDITION, DESIGN OR PURPOSE.			
BALD EAGLE LAKE DRAIN OAKLAND COUNTY, MICHIGAN			
DRAINAGE DISTRICT BOUNDARY BALD EAGLE LAKE DRAIN			
DUNDEE OFFICE 125 Helle Blvd, Suite 2 Dundee, MI 48131 Tel. 734-823-3308 www.SpicerGroup.com			
DE. BY: PL	CH. BY: RVG	PROJECT NO.	
DR. BY: JCB	APP. BY: RAV	126933SG2019	
STDS.	SHEET 3 OF 5	DR	
DATE: AUGUST 2019	FILE NO.	3	
SCALE: 1"=400'	DR-3921		