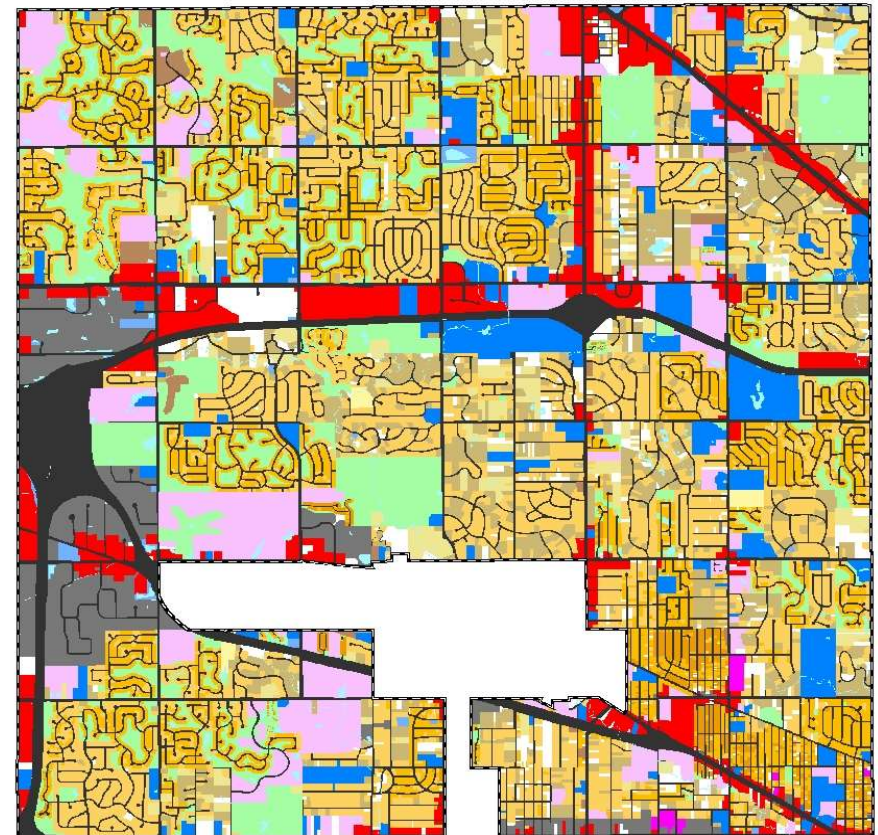
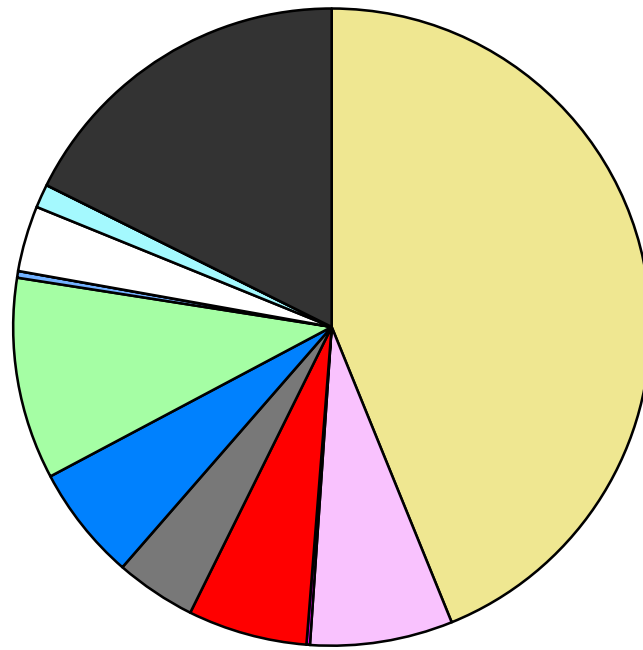


Land Use	Area (ac.)	Area (%)	Parcels	Parcels (%)
Agricultural				
Single Family Residential	9,347.0	43.9%	20,532	88.8%
Multiple Family	1,539.7	7.2%	146	0.6%
Mobile Home Park	37.1	0.2%	7	0.0%
Commercial/Office	1,289.9	6.1%	653	2.8%
Industrial	870.5	4.1%	370	1.6%
Public/Institutional	1,241.3	5.8%	172	0.7%
Recreation/Conservation	2,183.4	10.2%	367	1.6%
Transp./Utility/Comm.	72.6	0.3%	37	0.2%
Extractive				
Vacant	710.1	3.3%	833	3.6%
Water	256.9	1.2%		
Railroad Right-of-Way				
Road Right-of-Way	3,759.8	17.6%		
<b>Total</b>	<b>21,308.4</b>	<b>100.0%</b>	<b>23,117</b>	<b>100.0%</b>

Single Family By Lot Size	Area (ac.)	Area (%)	Parcels	Parcels (%)
10 acres or greater	42.4	0.5%	3	0.0%
5 to 9.9 acres	150.7	1.6%	24	0.1%
2.5 to 4.9 acres	343.7	3.7%	102	0.5%
1 to 2.4 acres	1,534.5	16.4%	1,061	5.2%
14,000 to 43,559 sq. ft.	4,622.4	49.5%	9,086	44.3%
8,000 to 13,999 sq. ft.	2,297.1	24.6%	8,780	42.8%
Less than 8,000 sq. ft.	215.5	2.3%	1,454	7.1%
More than one unit per parcel	140.8	1.5%	22	0.1%
<b>Single Family Sub-total</b>	<b>9,347.0</b>	<b>100.0%</b>	<b>20,532</b>	<b>100.0%</b>

#### Land Use by Area

- Agricultural
- Single Family Residential
- Multiple Family
- Mobile Home Park
- Commercial/Office
- Industrial
- Public/Institutional
- Recreation/Conservation
- Transp./Utility/Comm.
- Extractive
- Vacant
- Water
- Railroad Right-of-Way
- Road Right-of-Way



For more information, maps, or questions about this data, please contact the Oakland County Planning at (248) 858-0720.