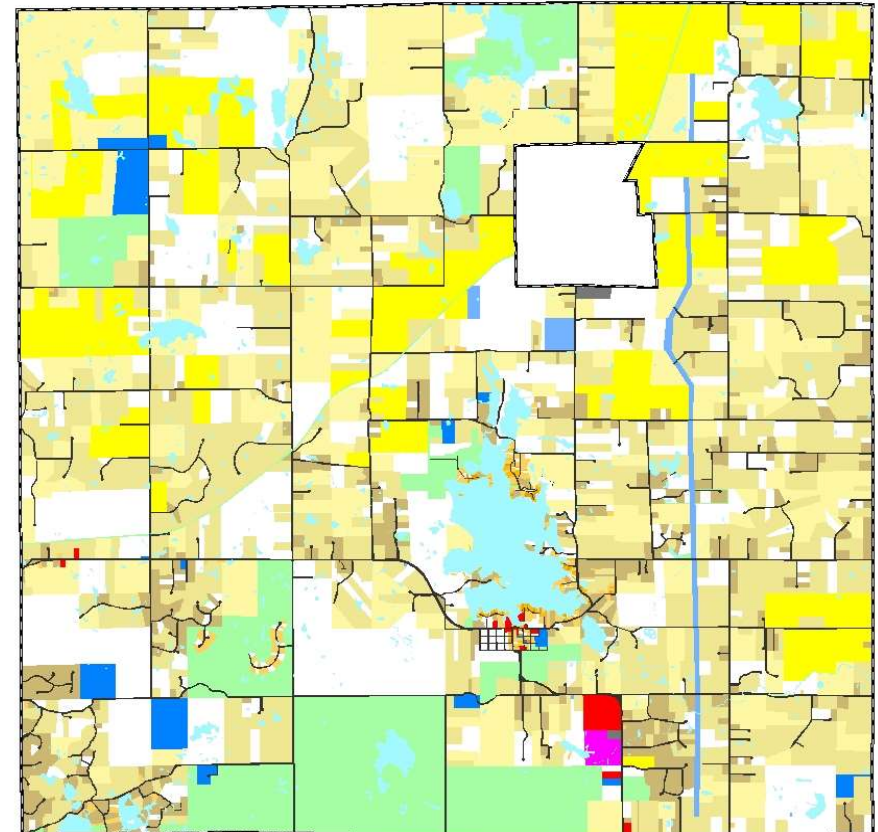
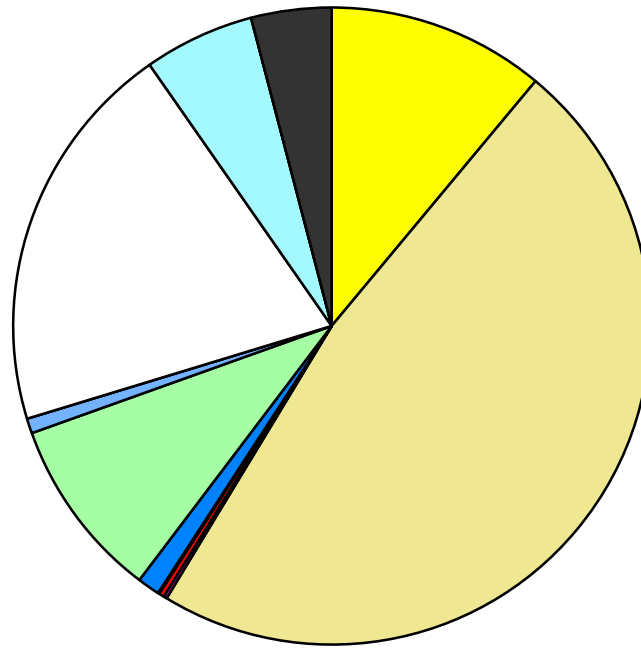


Land Use	Area (ac.)	Area (%)	Parcels	Parcels (%)
Agricultural	2,519.1	11.1%	78	2.7%
Single Family Residential	10,855.7	47.6%	2,198	75.7%
Multiple Family				
Mobile Home Park	36.7	0.2%	1	0.0%
Commercial/Office	60.1	0.3%	15	0.5%
Industrial	19.0	0.1%	3	0.1%
Public/Institutional	258.7	1.1%	20	0.7%
Recreation/Conservation	2,101.3	9.2%	56	1.9%
Transp./Utility/Comm.	172.4	0.8%	9	0.3%
Extractive				
Vacant	4,559.2	20.0%	524	18.0%
Water	1,279.3	5.6%		
Railroad Right-of-Way				
Road Right-of-Way	929.2	4.1%		
Total	22,790.9	100.0%	2,904	100.0%

Single Family By Lot Size	Area (ac.)	Area (%)	Parcels	Parcels (%)
10 acres or greater	4,151.3	38.2%	233	10.6%
5 to 9.9 acres	3,405.9	31.4%	413	18.8%
2.5 to 4.9 acres	1,888.4	17.4%	528	24.0%
1 to 2.4 acres	1,256.2	11.6%	647	29.4%
14,000 to 43,559 sq. ft.	123.7	1.1%	217	9.9%
8,000 to 13,999 sq. ft.	19.1	0.2%	76	3.5%
Less than 8,000 sq. ft.	11.2	0.1%	84	3.8%
More than one unit per parcel				
Single Family Sub-total	10,855.7	100.0%	2,198	100.0%

Land Use by Area

- Agricultural
- Single Family Residential
- Multiple Family
- Mobile Home Park
- Commercial/Office
- Industrial
- Public/Institutional
- Recreation/Conservation
- Transp./Utility/Comm.
- Extractive
- Vacant
- Water
- Railroad Right-of-Way
- Road Right-of-Way



For more information, maps, or questions about this data, please contact the Oakland County Planning at (248) 858-0720.