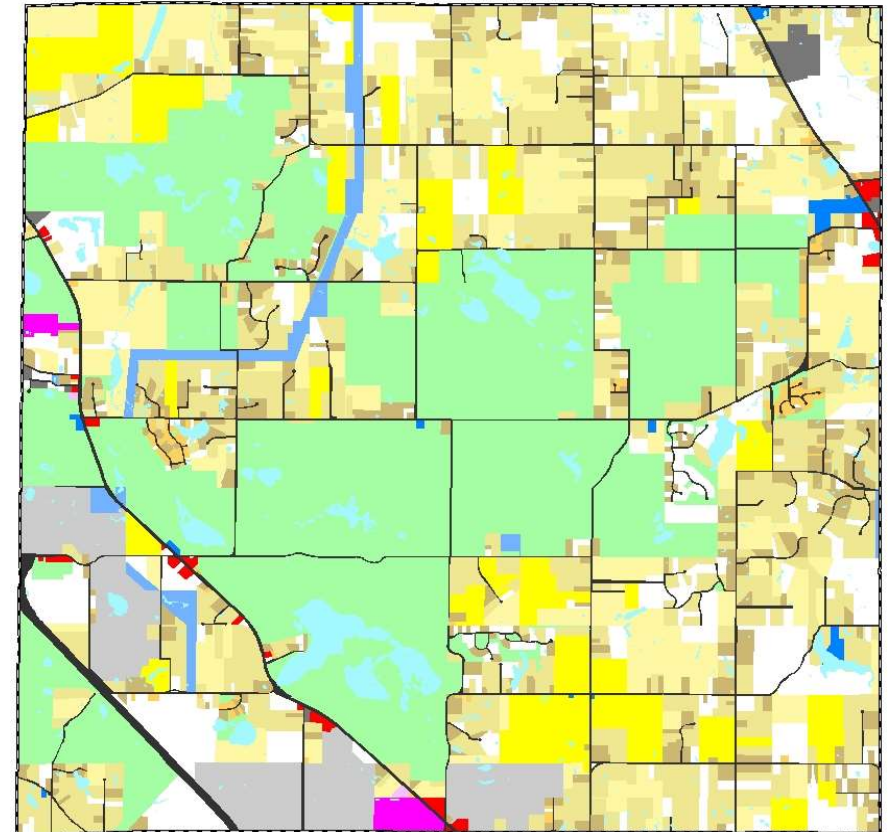
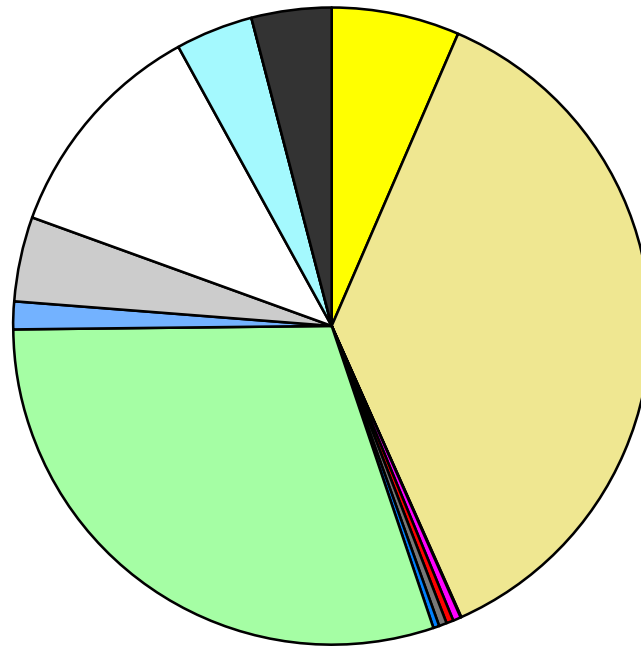


Land Use	Area (ac.)	Area (%)	Parcels	Parcels (%)
Agricultural	1,497.1	6.5%	52	2.1%
Single Family Residential	8,495.7	36.8%	1,846	74.1%
Multiple Family	7.4	0.0%	2	0.1%
Mobile Home Park	94.7	0.4%	4	0.2%
Commercial/Office	82.5	0.4%	34	1.4%
Industrial	91.7	0.4%	9	0.4%
Public/Institutional	68.9	0.3%	12	0.5%
Recreation/Conservation	6,917.7	30.0%	83	3.3%
Transp./Utility/Comm.	323.6	1.4%	15	0.6%
Extractive	993.3	4.3%	31	1.2%
Vacant	2,644.9	11.5%	403	16.2%
Water	906.5	3.9%		
Railroad Right-of-Way				
Road Right-of-Way	936.2	4.1%		
Total	23,060.3	100.0%	2,491	100.0%

Single Family By Lot Size	Area (ac.)	Area (%)	Parcels	Parcels (%)
10 acres or greater	2,826.7	33.3%	147	8.0%
5 to 9.9 acres	2,385.6	28.1%	298	16.1%
2.5 to 4.9 acres	1,747.1	20.6%	476	25.8%
1 to 2.4 acres	1,401.0	16.5%	742	40.2%
14,000 to 43,559 sq. ft.	134.4	1.6%	179	9.7%
8,000 to 13,999 sq. ft.	0.8	0.0%	3	0.2%
Less than 8,000 sq. ft.	0.0	0.0%	1	0.1%
More than one unit per parcel				
Single Family Sub-total	8,495.7	100.0%	1,846	100.0%

Land Use by Area

- Agricultural
- Single Family Residential
- Multiple Family
- Mobile Home Park
- Commercial/Office
- Industrial
- Public/Institutional
- Recreation/Conservation
- Transp./Utility/Comm.
- Extractive
- Vacant
- Water
- Railroad Right-of-Way
- Road Right-of-Way



For more information, maps, or questions about this data, please contact the Oakland County Planning at (248) 858-0720.