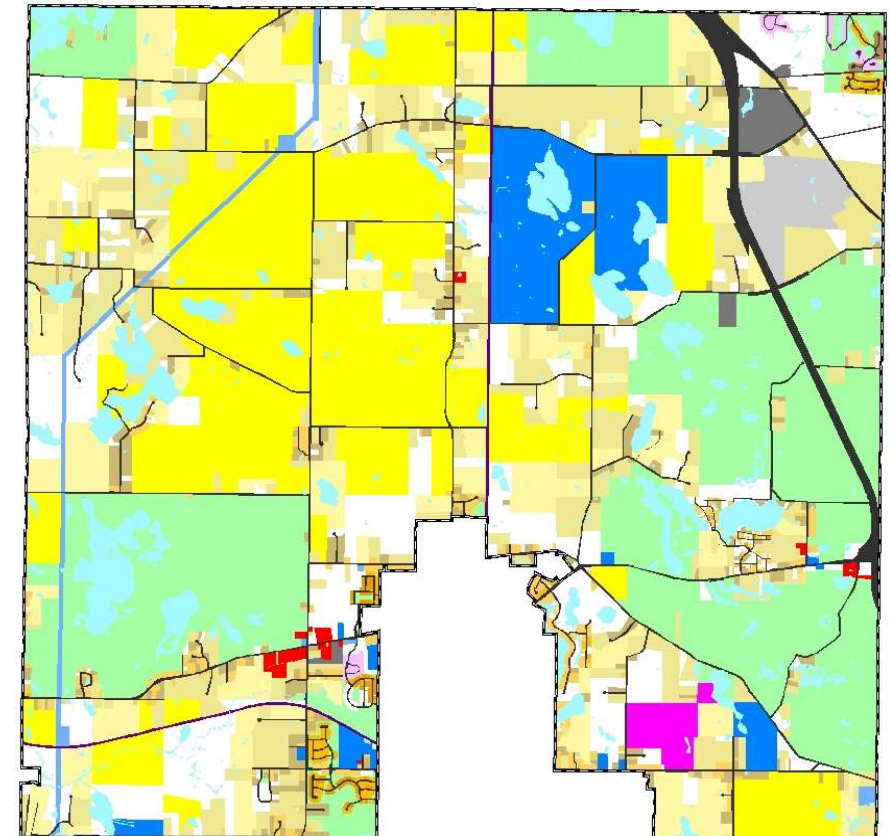
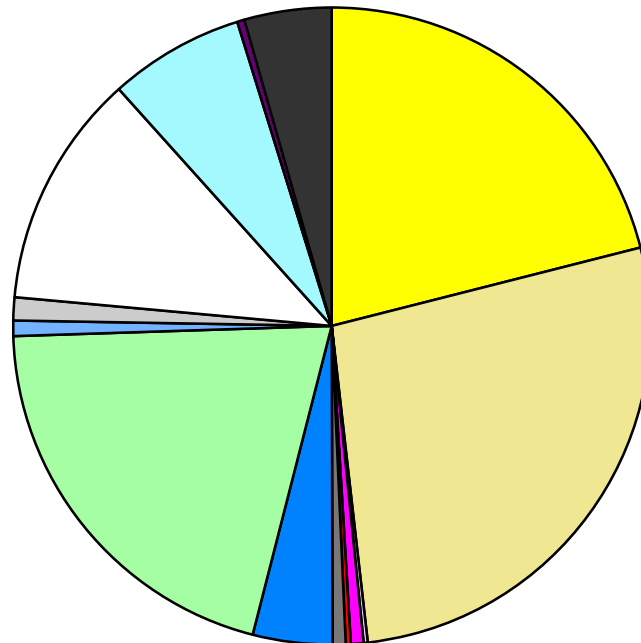


Land Use	Area (ac.)	Area (%)	Parcels	Parcels (%)
Agricultural	4,491.5	21.0%	99	3.6%
Single Family Residential	5,799.4	27.2%	1,974	72.4%
Multiple Family	47.0	0.2%	4	0.1%
Mobile Home Park	134.5	0.6%	8	0.3%
Commercial/Office	56.7	0.3%	20	0.7%
Industrial	138.3	0.6%	7	0.3%
Public/Institutional	862.4	4.0%	20	0.7%
Recreation/Conservation	4,380.3	20.5%	74	2.7%
Transp./Utility/Comm.	168.6	0.8%	20	0.7%
Extractive	248.0	1.2%	7	0.3%
Vacant	2,541.8	11.9%	493	18.1%
Water	1,465.8	6.9%		
Railroad Right-of-Way	77.2	0.4%		
Road Right-of-Way	945.1	4.4%		
<b>Total</b>	<b>21,356.7</b>	<b>100.0%</b>	<b>2,726</b>	<b>100.0%</b>

Single Family By Lot Size	Area (ac.)	Area (%)	Parcels	Parcels (%)
10 acres or greater	2,239.0	38.6%	105	5.3%
5 to 9.9 acres	1,695.5	29.2%	220	11.1%
2.5 to 4.9 acres	906.4	15.6%	237	12.0%
1 to 2.4 acres	502.7	8.7%	320	16.2%
14,000 to 43,559 sq. ft.	331.7	5.7%	536	27.2%
8,000 to 13,999 sq. ft.	80.3	1.4%	345	17.5%
Less than 8,000 sq. ft.	33.7	0.6%	209	10.6%
More than one unit per parcel	10.2	0.2%	2	0.1%
<b>Single Family Sub-total</b>	<b>5,799.4</b>	<b>100.0%</b>	<b>1,974</b>	<b>100.0%</b>

#### Land Use by Area

- Agricultural
- Single Family Residential
- Multiple Family
- Mobile Home Park
- Commercial/Office
- Industrial
- Public/Institutional
- Recreation/Conservation
- Transp./Utility/Comm.
- Extractive
- Vacant
- Water
- Railroad Right-of-Way
- Road Right-of-Way



For more information, maps, or questions about this data, please contact the Oakland County Planning at (248) 858-0720.