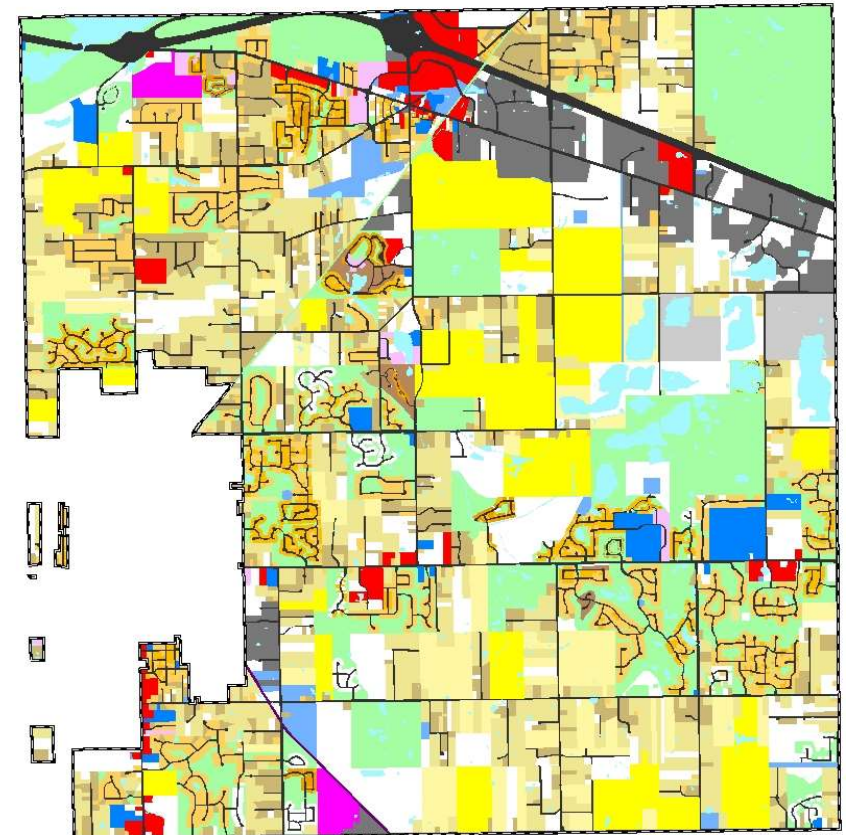
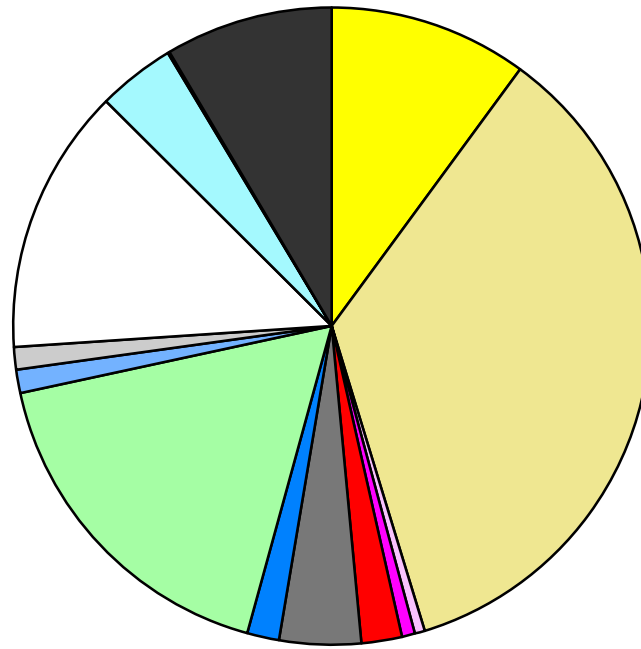


Land Use	Area (ac.)	Area (%)	Parcels	Parcels (%)
Agricultural	2,047.0	10.1%	47	0.5%
Single Family Residential	7,151.1	35.2%	6,802	79.2%
Multiple Family	104.6	0.5%	22	0.3%
Mobile Home Park	135.4	0.7%	2	0.0%
Commercial/Office	416.2	2.0%	117	1.4%
Industrial	841.2	4.1%	134	1.6%
Public/Institutional	330.4	1.6%	34	0.4%
Recreation/Conservation	3,522.4	17.3%	311	3.6%
Transp./Utility/Comm.	242.0	1.2%	31	0.4%
Extractive	231.4	1.1%	4	0.0%
Vacant	2,747.3	13.5%	1,081	12.6%
Water	797.7	3.9%		
Railroad Right-of-Way	19.6	0.1%		
Road Right-of-Way	1,727.4	8.5%		
Total	20,313.6	100.0%	8,585	100.0%

Single Family By Lot Size	Area (ac.)	Area (%)	Parcels	Parcels (%)
10 acres or greater	1,199.0	16.8%	66	1.0%
5 to 9.9 acres	1,062.4	14.9%	141	2.1%
2.5 to 4.9 acres	1,330.6	18.6%	360	5.3%
1 to 2.4 acres	1,439.2	20.1%	898	13.2%
14,000 to 43,559 sq. ft.	1,525.9	21.3%	3,153	46.4%
8,000 to 13,999 sq. ft.	420.2	5.9%	1,583	23.3%
Less than 8,000 sq. ft.	87.5	1.2%	595	8.7%
More than one unit per parcel	86.3	1.2%	6	0.1%
Single Family Sub-total	7,151.1	100.0%	6,802	100.0%

Land Use by Area

- Agricultural
- Single Family Residential
- Multiple Family
- Mobile Home Park
- Commercial/Office
- Industrial
- Public/Institutional
- Recreation/Conservation
- Transp./Utility/Comm.
- Extractive
- Vacant
- Water
- Railroad Right-of-Way
- Road Right-of-Way



For more information, maps, or questions about this data, please contact the Oakland County Planning at (248) 858-0720.