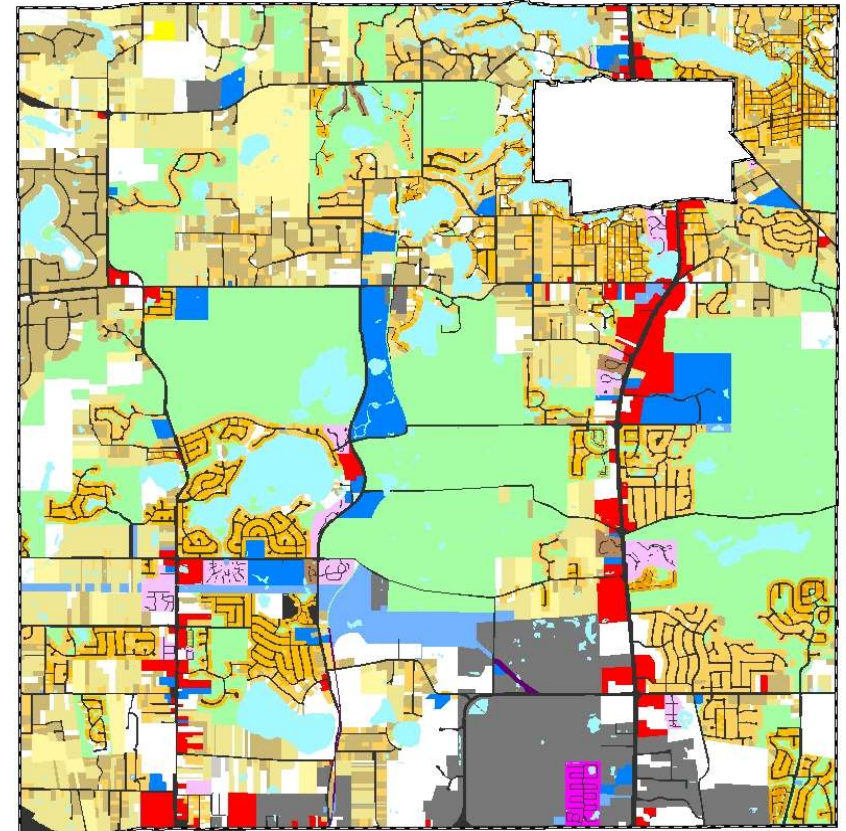
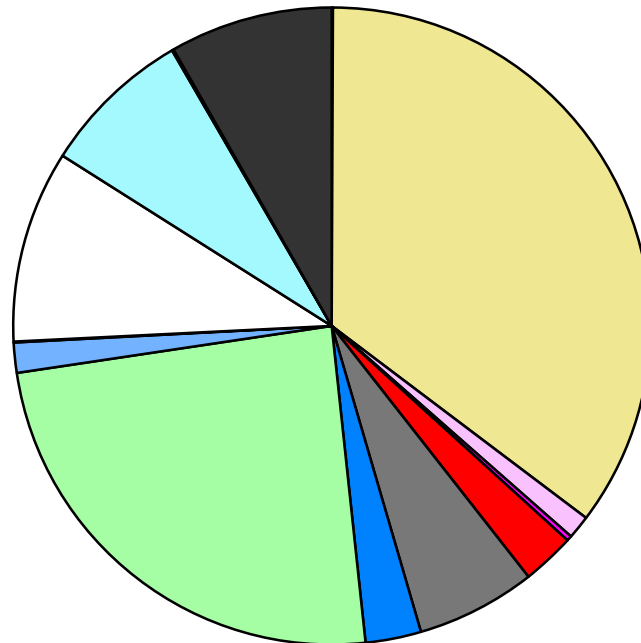


Land Use	Area (ac.)	Area (%)	Parcels	Parcels (%)
Agricultural	15.0	0.1%	1	0.0%
Single Family Residential	7,808.5	35.2%	11,140	87.3%
Multiple Family	265.1	1.2%	18	0.1%
Mobile Home Park	58.7	0.3%	3	0.0%
Commercial/Office	593.4	2.7%	222	1.7%
Industrial	1,344.2	6.1%	112	0.9%
Public/Institutional	625.7	2.8%	56	0.4%
Recreation/Conservation	5,399.6	24.3%	273	2.1%
Transp./Utility/Comm.	339.2	1.5%	47	0.4%
Extractive	8.7	0.0%	2	0.0%
Vacant	2,166.6	9.8%	881	6.9%
Water	1,698.7	7.7%		
Railroad Right-of-Way	18.5	0.1%		
Road Right-of-Way	1,833.6	8.3%		
<b>Total</b>	<b>22,175.6</b>	<b>100.0%</b>	<b>12,755</b>	<b>100.0%</b>

Single Family By Lot Size	Area (ac.)	Area (%)	Parcels	Parcels (%)
10 acres or greater	744.1	9.5%	40	0.4%
5 to 9.9 acres	687.7	8.8%	101	0.9%
2.5 to 4.9 acres	1,237.1	15.8%	347	3.1%
1 to 2.4 acres	1,779.9	22.8%	1,150	10.3%
14,000 to 43,559 sq. ft.	2,149.3	27.5%	4,399	39.5%
8,000 to 13,999 sq. ft.	1,022.2	13.1%	4,110	36.9%
Less than 8,000 sq. ft.	134.2	1.7%	989	8.9%
More than one unit per parcel	54.1	0.7%	4	0.0%
<b>Single Family Sub-total</b>	<b>7,808.5</b>	<b>100.0%</b>	<b>11,140</b>	<b>100.0%</b>

#### Land Use by Area

- Agricultural
- Single Family Residential
- Multiple Family
- Mobile Home Park
- Commercial/Office
- Industrial
- Public/Institutional
- Recreation/Conservation
- Transp./Utility/Comm.
- Extractive
- Vacant
- Water
- Railroad Right-of-Way
- Road Right-of-Way



For more information, maps, or questions about this data, please contact the Oakland County Planning at (248) 858-0720.