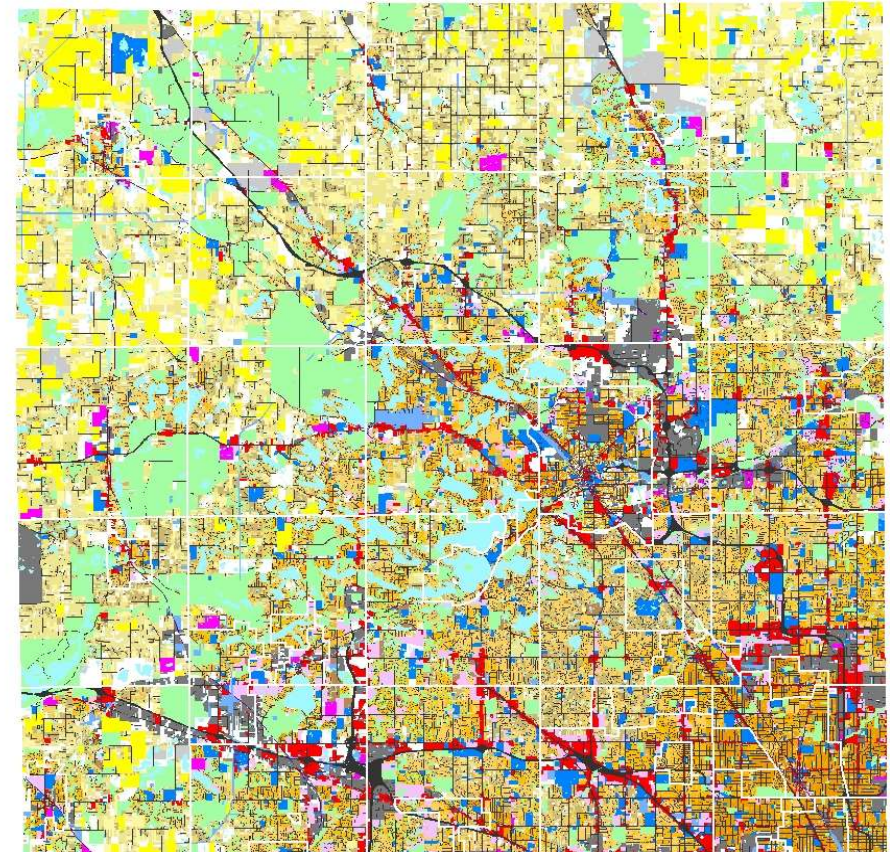
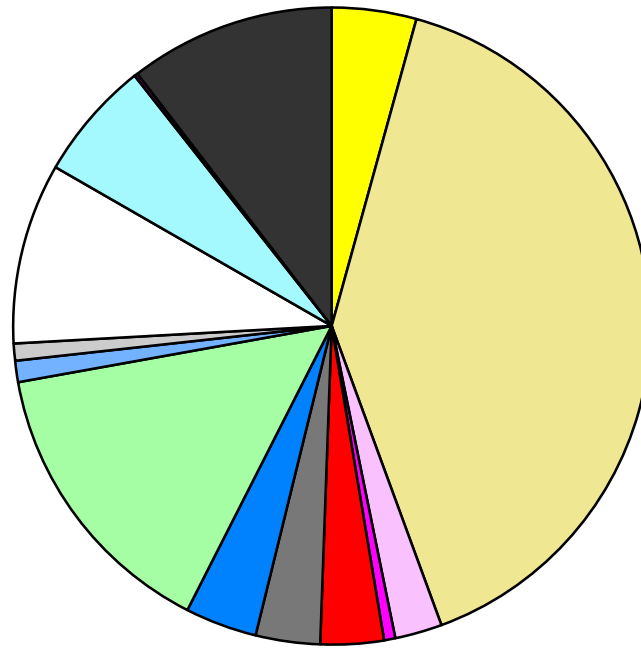


Land Use	Area (ac.)	Area (%)	Parcels	Parcels (%)
Agricultural	24,909.5	4.3%	687	0.2%
Single Family Residential	232,857.2	40.1%	373,209	85.9%
Multiple Family	13,970.9	2.4%	2,416	0.6%
Mobile Home Park	3,305.6	0.6%	243	0.1%
Commercial/Office	18,603.7	3.2%	12,854	3.0%
Industrial	18,998.1	3.3%	5,914	1.4%
Public/Institutional	21,108.0	3.6%	3,077	0.7%
Recreation/Conservation	85,244.5	14.7%	7,295	1.7%
Transp./Utility/Comm.	6,282.5	1.1%	1,212	0.3%
Extractive	5,043.3	0.9%	87	0.0%
Vacant	53,350.0	9.2%	27,258	6.3%
Water	35,242.0	6.1%		
Railroad Right-of-Way	1,010.4	0.2%		
Road Right-of-Way	60,618.2	10.4%		
Total	580,543.9	100.0%	434,252	100.0%

Single Family By Lot Size	Area (ac.)	Area (%)	Parcels	Parcels (%)
10 acres or greater	31,115.1	13.4%	1,771	0.5%
5 to 9.9 acres	31,159.1	13.4%	4,025	1.1%
2.5 to 4.9 acres	29,376.2	12.6%	8,240	2.2%
1 to 2.4 acres	37,768.7	16.2%	24,388	6.5%
14,000 to 43,559 sq. ft.	58,679.2	25.2%	116,800	31.3%
8,000 to 13,999 sq. ft.	28,382.1	12.2%	114,231	30.6%
Less than 8,000 sq. ft.	14,160.7	6.1%	103,576	27.8%
More than one unit per parcel	2,216.0	1.0%	178	0.0%
Single Family Sub-total	232,857.2	100.0%	373,209	100.0%

Land Use by Area

- Agricultural
- Single Family Residential
- Multiple Family
- Mobile Home Park
- Commercial/Office
- Industrial
- Public/Institutional
- Recreation/Conservation
- Transp./Utility/Comm.
- Extractive
- Vacant
- Water
- Railroad Right-of-Way
- Road Right-of-Way



For more information, maps, or questions about this data, please contact the Oakland County Planning at (248) 858-0720.