

## Township of Lyon

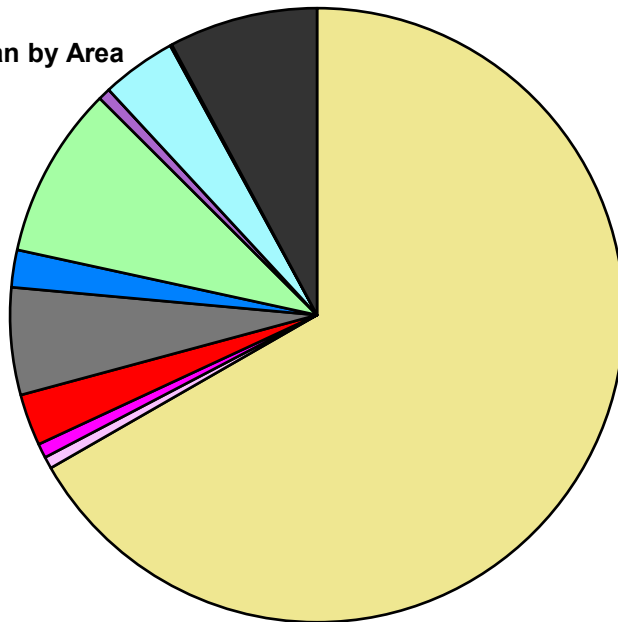
### Composite Master Plan Statistics

Land Use	Area (ac.)	Area (%)
Single Family Residential	13,549.1	66.7%
Multiple Family	128.2	0.6%
Mobile Home Park	155.3	0.8%
Commercial/Office	550.7	2.7%
Industrial	1,146.6	5.6%
Public/Institutional	401.1	2.0%
Recreation/Conservation	1,838.6	9.1%
Mixed Use	135.0	0.7%
Reclamation Plan		
Water	797.7	3.9%
Railroad Right-of-Way	19.7	0.1%
Road Right-of-Way	1,591.5	7.8%
<b>Total</b>	<b>20,313.5</b>	<b>100.0%</b>

Single Family by Lot Size	Area (ac.)	Area (%)
10 acres or greater		
5 to 9.9 acres		
2.5 to 4.9 acres		
1 to 2.4 acres		
14,000 to 43,559 sq. ft.	13,162.2	97.1%
8,000 to 13,999 sq. ft.		
Less than 8,000 sq. ft.	386.9	2.9%
<b>Single Family Sub-total</b>	<b>13,549.1</b>	<b>100.0%</b>

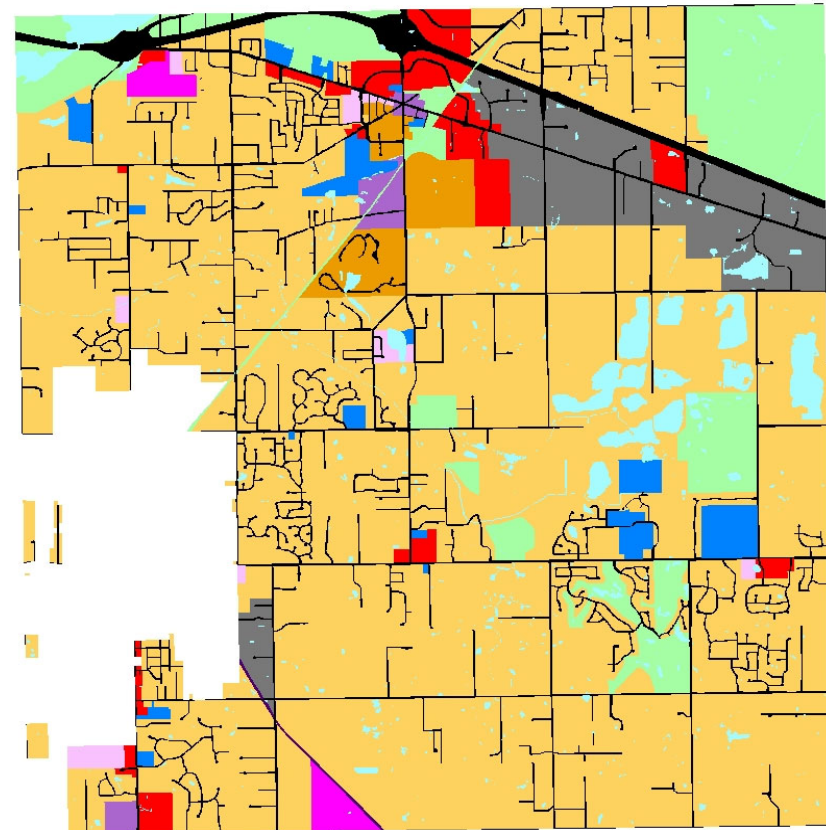
**Composite Master Plan by Area**

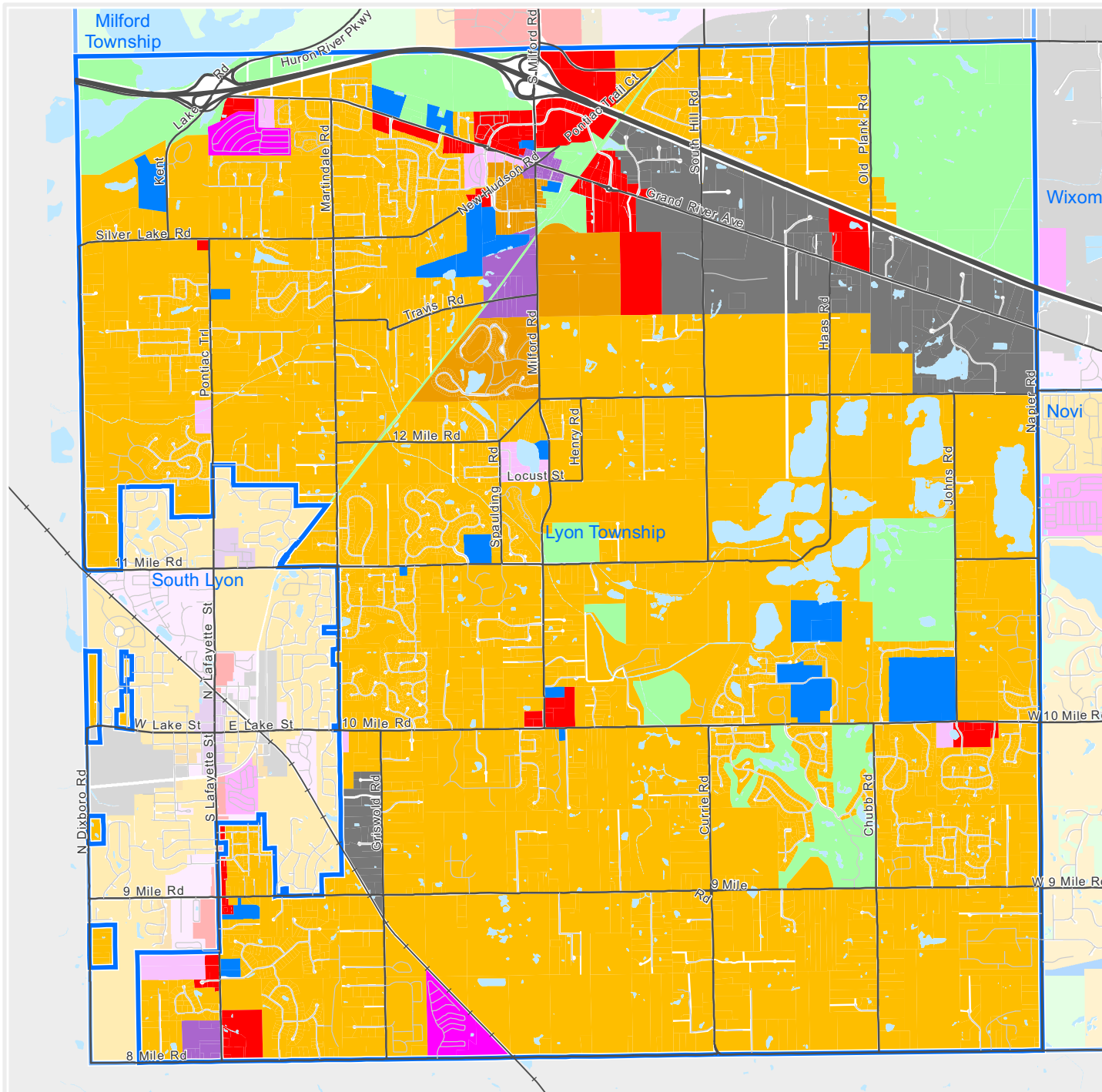
- Single Family Residential
- Multiple Family
- Mobile Home Park
- Commercial/Office
- Industrial
- Public/Institutional
- Recreation/Conservation
- Mixed Use
- Reclamation Plan
- Water
- Railroad Right-of-Way
- Road Right-of-Way



For more information, maps, or questions about this data, please contact Oakland County Economic Development at (248) 858-0720.

These statistics represent a generalized future land use based on each community's master plan. Right-of-way and water figures are based on existing conditions.

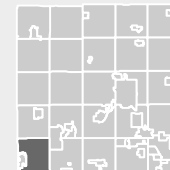




The information provided herewith has been compiled from recorded deeds, plats, tax maps, surveys and other public records. It is not a legally recorded map or survey and is not intended to be used as one. Users should consult the information sources mentioned above when questions arise.



Executive Office Building  
2100 Pontiac Lake Road, Bldg. 41W  
Waterford, MI 48328-0412  
248.858.0720  
[www.oakgov.com/luz](http://www.oakgov.com/luz)



## Composite Master Plan Township of Lyon

### Legend

- Single Family, 10 acres or greater
- Single Family, 5 to 9.9 acres
- Single Family, 2.5 to 4.9 acres
- Single Family, 1 to 2.4 acres
- Single Family, 14,000 to 43,559 sq. ft.
- Single Family, 8,000 to 13,999 sq. ft.
- Single Family, Less than 8,000 sq. ft.
- Multiple Family Residential
- Mobile Home Park
- Commercial/Office
- Industrial
- Public/Institutional
- Recreation/Conservation
- Mixed Use
- Reclamation Plan

This map represents a generalized future land use based on each community's master plan.



1 inch = 4,740 feet

Map created on January 9, 2023