

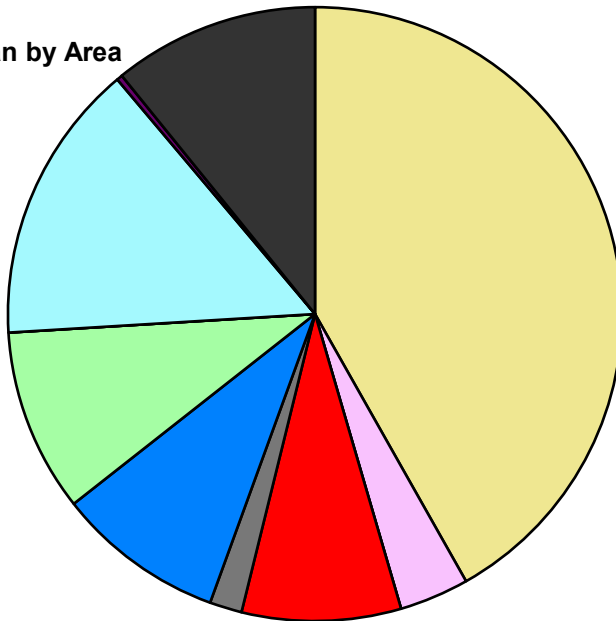
Township of Waterford Composite Master Plan Statistics

Land Use	Area (ac.)	Area (%)
Single Family Residential	9,418.0	41.8%
Multiple Family	823.5	3.7%
Mobile Home Park		
Commercial/Office	1,888.9	8.4%
Industrial	383.7	1.7%
Public/Institutional	1,991.5	8.8%
Recreation/Conservation	2,174.9	9.7%
Mixed Use		
Reclamation Plan		
Water	3,337.7	14.8%
Railroad Right-of-Way	69.0	0.3%
Road Right-of-Way	2,439.7	10.8%
Total	22,527.1	100.0%

Single Family by Lot Size	Area (ac.)	Area (%)
10 acres or greater		
5 to 9.9 acres		
2.5 to 4.9 acres		
1 to 2.4 acres	830.6	8.8%
14,000 to 43,559 sq. ft.		
8,000 to 13,999 sq. ft.	8,587.4	91.2%
Less than 8,000 sq. ft.		
Single Family Sub-total	9,418.0	100.0%

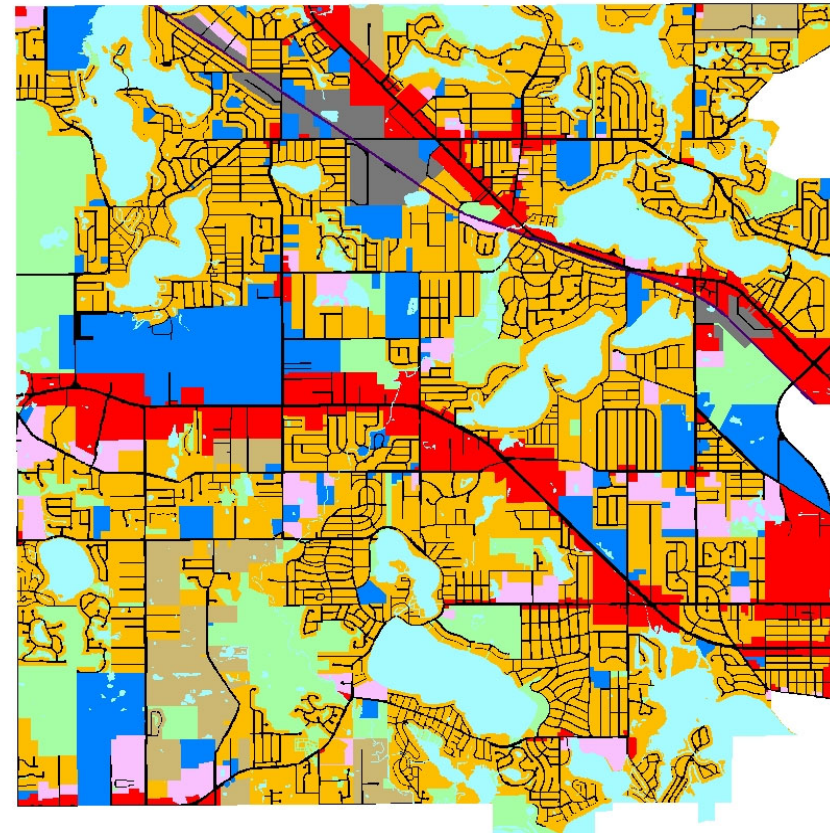
Composite Master Plan by Area

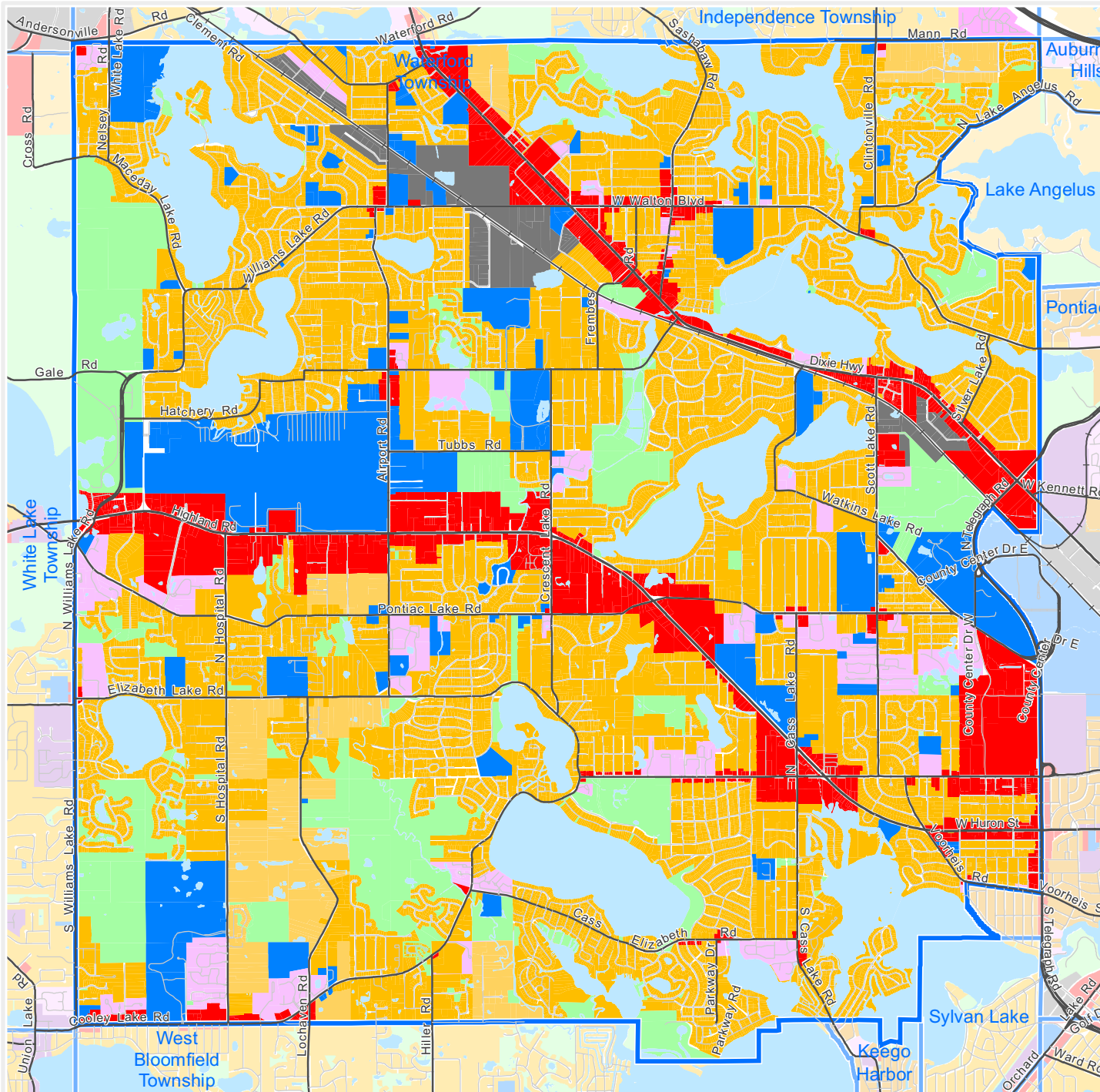
- Single Family Residential
- Multiple Family
- Mobile Home Park
- Commercial/Office
- Industrial
- Public/Institutional
- Recreation/Conservation
- Mixed Use
- Reclamation Plan
- Water
- Railroad Right-of-Way
- Road Right-of-Way



For more information, maps, or questions about this data, please contact Oakland County Economic Development at (248) 858-0720.

These statistics represent a generalized future land use based on each community's master plan. Right-of-way and water figures are based on existing conditions.

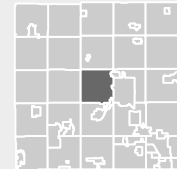




The information provided herewith has been compiled from recorded deeds, plats, tax maps, surveys and other public records. It is not a legally recorded map or survey and is not intended to be used as one. Users should consult the information sources mentioned above when questions arise.



Executive Office Building
2100 Pontiac Lake Road, Bldg. 41W
Waterford, MI 48328-0412
248.858.0720
www.oakgov.com/luz



Composite Master Plan Township of Waterford

Legend

- Single Family, 10 acres or greater
- Single Family, 5 to 9.9 acres
- Single Family, 2.5 to 4.9 acres
- Single Family, 1 to 2.4 acres
- Single Family, 14,000 to 43,559 sq. ft.
- Single Family, 8,000 to 13,999 sq. ft.
- Single Family, Less than 8,000 sq. ft.
- Multiple Family Residential
- Mobile Home Park
- Commercial/Office
- Industrial
- Public/Institutional
- Recreation/Conservation
- Mixed Use
- Reclamation Plan

This map represents a generalized future land use based on each community's master plan.



Map created on January 9, 2023