

OAKLAND COUNTY EMERGENCY OPERATIONS PLAN



David Coulter
Oakland County Executive
November 2021



This page intentionally left blank

PROMULGATION

The Oakland County Emergency Operations Plan (EOP) provides a framework and guidance to local officials in responding to and recovering from the effects of natural, technological, and human-caused disasters. The priority shall always be providing for the health, safety, and welfare of the public and responders.

This EOP authorizes and directs Oakland County government personnel, as well as those assigned to specific roles as provided for in this document, to perform their duties and tasks before, during, and after an emergency. This plan meets requirements of the Michigan Emergency Management Act (Public Act 390 of 1976, as amended).

This base plan and the annexes maintained herein constitute the official Emergency Operations Plan (EOP) for Oakland County and those jurisdictions listed below:

City of Auburn Hills*	Township of Addison	Village of Beverly Hills*
City of Berkley*	Township of Bloomfield**	Village of Bingham Farms
City of Bloomfield Hills	Township of Brandon*	Village of Franklin
City of Birmingham**	Township of Commerce*	Village of Holly
City of the Village of Clarkston	Township of Groveland	Village of Lake Orion
City of Clawson*	Township of Highland*	Village of Leonard
City of Farmington*	Township of Holly	Village of Milford
City of Farmington Hills**	Township of Independence*	Village of Ortonville
City of Ferndale*	Township of Lyon*	Village of Oxford
City of Hazel Park*	Township of Milford*	Village of Wolverine Lake
City of Huntington Woods	Township of Novi	
City of Keego Harbor	Township of Oakland*	
City of Lake Angelus	Township of Orion*	
City of Lathrup Village	Township of Oxford*	
City of Madison Heights*	Township of Rose	
City of Northville (part)	Township of Royal Oak	
City of Novi*	Township of Southfield	
City of Oak Park*	Township of Springfield*	
City of Orchard Lake Village	Township of Waterford**	
City of Pleasant Ridge	Township of West Bloomfield*	
City of Pontiac*	Township of White Lake*	
City of Rochester*		
City of Rochester Hills*		
City of Royal Oak*		
City of South Lyon*		
City of Southfield**		
City of Sylvan Lake		
City of Troy*		
City of Walled Lake		
City of Wixom*		

*Indicates those cities, villages, and townships with population over 10,000 who have elected to fall under the Oakland County emergency management program. **Five jurisdictions within Oakland County with a population over 10,000 maintain a separate plan and program. Those communities are City of Birmingham, City of Farmington Hills, City of Southfield, Bloomfield Township, and Waterford Township.

This plan is intended to integrate with the National Response Framework (NRF), National Disaster Response Framework (NDRF), National Incident Management System (NIMS), Michigan Emergency Management Plan (MEMP), local community emergency response plans or support plans to the county EOP, and primary functional specific plans such as the Oakland County Public Health Emergency Operations Plan.

The policies contained herein do not discriminate on the basis of race, color, national origin, religion, sex, age, disability, or political beliefs.

APPROVAL AND IMPLEMENTATION

When executed the plan shall activate all departments, offices, and employees of Oakland County and the County Emergency Operations Center (EOC) to support the County Executive in implementing effective measures to respond and recover during a State of Emergency / Disaster.

Senior officials and designated representatives of agencies and organizations identified in this plan concur with the base plan and emergency support function annexes when they perform a primary or coordinating role.

This plan and its provisions will become official when signed and dated below and will supersede all previous editions.



David Coulter
Oakland County Executive

12/23/21

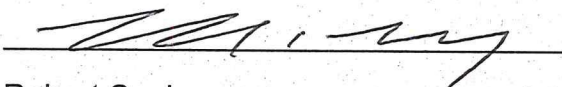
Date



Thomas Hardesty
Director, Oakland County Emergency Management
& Homeland Security Department

12/13/2021

Date



Robert Seeley
Chief, Oakland County Emergency Management Division

12/13/2021

Date

TABLE OF CONTENTS

Base Plan

Purpose, Scope, Situation, and Assumptions.....	1
I. Purpose	
II. Scope and Applicability	
○ Planning Process	
○ Planning Principles and Whole Community Approach	
○ Plan Structure and Integration	
○ EOP Annexes	
III. Situation Overview	
○ Community / Jurisdiction Profile	
○ Hazard Analysis Summary	
○ Capability Assessment	
IV. Planning Assumptions	
Concept of Operations.....	21
V. Emergency Management / Disaster Declaration Process Overview	
VI. Local Emergency Response Plans in Support of County EOP	
Direction, Control, and Coordination.....	27
VII. National Incident Management System (NIMS)	
VIII. Emergency Operations Center (EOC)	
Organization and Assignment of Responsibilities.....	34
Information Collection, Analysis, and Dissemination.....	42
Communications.....	42
Administration, Finance, and Logistics.....	44
Training and Exercises.....	46
Plan Development and Maintenance.....	48
Authorities and References.....	48
Appendices:	
○ Acronyms List	
Maintained Separate from Base Plan:	
○ Emergency Support Function (ESF) Annexes	
○ All-Hazard Support Annexes (SA)	
○ Hazard-Specific Incident Annexes (IA)	

BASE PLAN

Purpose, Scope, Situation, and Assumptions

I. Purpose

The purpose of the **Oakland County Emergency Operations Plan (EOP)** is to provide a framework and concept of operations concerning how the County of Oakland, Michigan shall plan and prepare for, respond to, and recover from an emergency of significance or disaster.

The plan, in whole or part, as well as the **Oakland County Emergency Operations Center (EOC)**, may be activated by the Oakland County Emergency Management and Homeland Security Director or Chief of Emergency Management Division at the direction of the County Executive to coordinate and support:

- County continuity of operations (COOP) and continuity of government (COG).
- Multi-agency coordination and unity of effort in accordance with the National Incident Management System (NIMS).
- Local communities that are overwhelmed or formally requesting assistance from the next tier in accordance with Michigan Public Act 390.

The EOP also describes programs and activities that promote:

- Individuals, families, businesses, faith-based and non-profit organizations being vigilant and resilient.
- Information sharing and cooperation between all levels of government.
- Public and private partnerships.
- Engaging the whole community.

Oakland County's EOP meets or exceeds State and Federal requirements and standards for local emergency operations plans.

II. Scope and Applicability

The EOP Base Plan as a stand-alone document and as a component of the comprehensive EOP describes the local emergency management process, establishes guiding principles, and assigns crisis and consequence management roles and responsibilities. It provides a foundation for and overview of strategic, operational coordination, and tactical support planning for all-hazards as well as specific hazards, threats, and incidents with the most potential impact or are most likely to occur in Southeast Michigan.

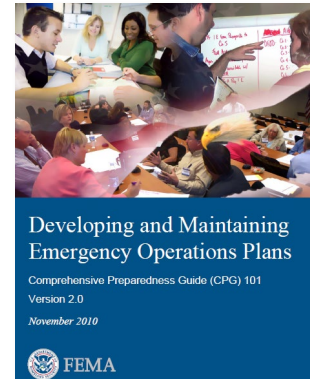
This basic plan, when integrated with EOP annexes and other referenced doctrine, are applicable to all departments, agencies, stakeholders, and partners involved in coordinating, supporting, or performing a lead or assisting task during an actual or impending emergency, disaster, or catastrophic event.

PLANNING PROCESS

The Oakland County EOP meets or exceeds all applicable local, State, and Federal standards and requirements to include the Michigan Emergency Management Act (Public Act 390 of 1976, as amended) and the Emergency Management Performance Grant (EMPG).

The EOP is consistent with specific State and Federal guidance to include:

- **DHS / FEMA Comprehensive Preparedness Guide (CPG) 101**, Version 2 (November 2010) and Version 3 (September 2021), Developing and Maintaining Emergency Operations Plans
- **DHS / FEMA National Preparedness Goal (NPG)**, 2nd Edition (September 2015)
- **DHS / FEMA A Whole Community Approach to Emergency Management** (December 2011)
- **MSP / EMHSD Publication 201a** (January 2014), Review Guide for Local Emergency Operations Plans



The plan is reviewed every two years or during the after-action / improvement planning process following a full-scale exercise or an actual major disaster. Any necessary changes or revisions are maintained in a log. The plan is updated by the county emergency management coordinator (Emergency Management and Homeland Security Director), is promulgated, approved, and implemented by the county executive, and is reviewed for approval by the State every four years.

The EOP is a fusion of strategic-level, operational-level coordination, and tactical-level support plans. Our plans often describe a policy, process, or specifically address EOC coordination and support for county-wide or tiered disaster response and recovery operations, especially when a state of emergency has been declared due to significant and overwhelming impact to local public health, safety, and welfare.

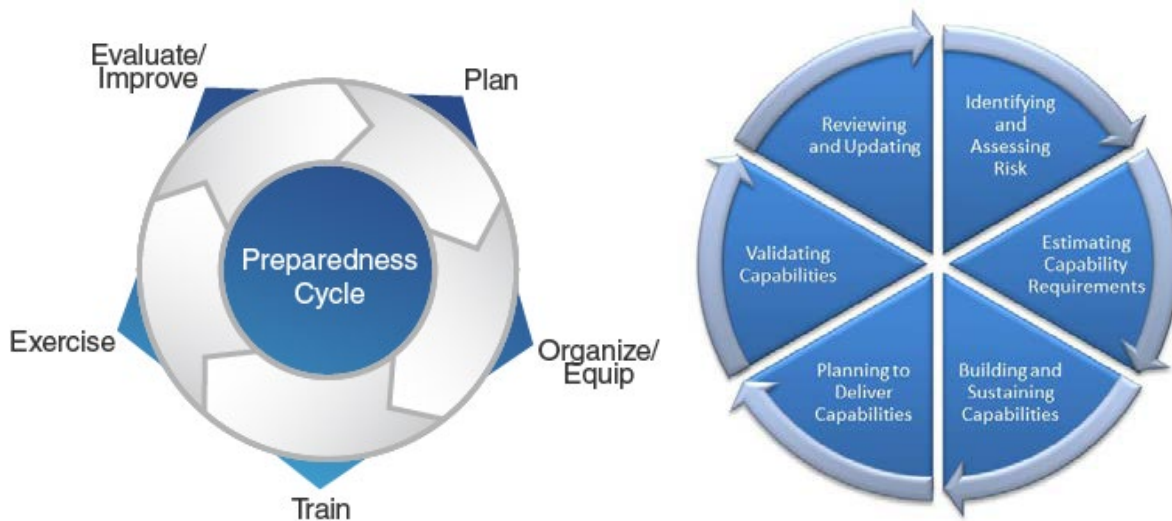
The EOP focuses on when an incident or disaster necessitates multi-agency / multi-jurisdictional coordination, critical resources allocation and prioritization, policy administration, or requesting State and Federal assistance (when not automatic or statutorily directed).

Most local operational- and tactical-level planning occurs within an **authority / agency having jurisdiction** and by on-scene incident command / unified command during the Incident Action Plan (IAP) process.



PLANNING PRINCIPLES AND WHOLE COMMUNITY APPROACH

The EOP is an *all-hazards, all-phases, all-impacts, all-stakeholders, and all-people* plan. It is a flexible and adaptable living document. We follow the National Preparedness Goal, National Preparedness System, and National Planning System.



The EOP is developed applying a combination of principles and approaches to our planning process. They include:

- Community-based planning
- Risk-based planning
- Capabilities-based planning (may include scenario- and functional-based)

Priorities are always protecting life, property, and the environment. All response and recovery planning focuses on mitigating impacts to, stabilizing, or restoring lifelines, and returning to normalcy (if possible).

Community Lifelines*



A lifeline enables the continuous operation of **government functions** and **critical business** and is essential to **human health** and **safety** or **economic security**.

*Community Lifelines are detailed further within applicable ESF, Support, and Incident Annexes

Whole Community

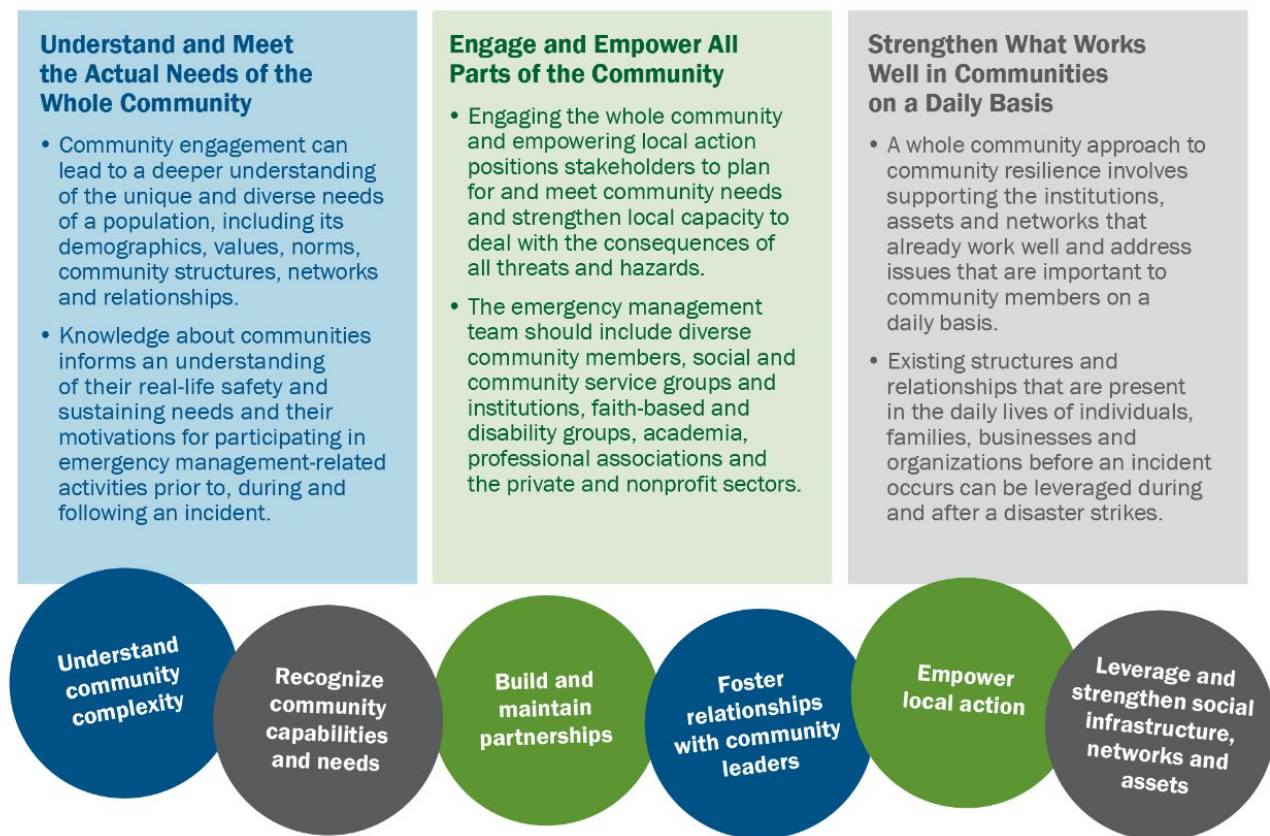
Oakland County's emergency management and homeland security programs and services are conducted by considering the following concepts:

- Understand and meet the actual needs of the whole community.
- Engage and empower all parts of the community.
- Strengthen what works well in communities on a daily basis.
- Incorporating diversity, equity, and inclusion (DEI) into everyday activities.

Oakland County's emergency- and disaster-related programs, services, and activities shall comply with Title II of the Americans with Disabilities Act (ADA).

Our efforts emphasize inclusion planning for people with disabilities and others with access and functional needs, seniors, infants, and children. Our planning efforts consider at-risk and underserved populations as well as animal welfare. Planning also includes engaging with the private sector.

Description of whole community approach to emergency management:



PLAN STRUCTURE AND INTEGRATION

EOP Structure

The Oakland County EOP utilizes an emergency support function format. The comprehensive EOP has four distinct yet connected sections. They are:

EOP Section I - Base Plan and Appendices

EOP Section II - Emergency Support Function (ESF) Annexes

EOP Section III - Support Annexes

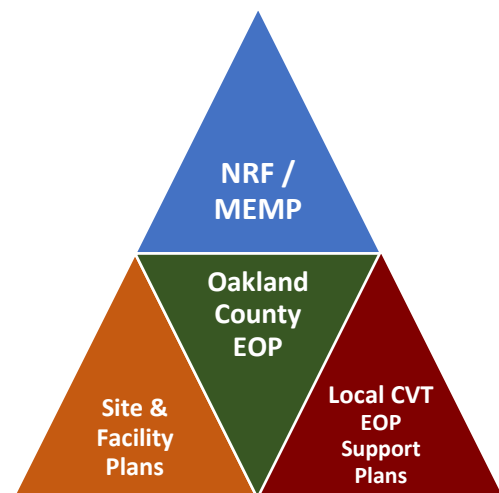
EOP Section IV - Hazard-, Threat-, and Incident-Specific Annexes



Plan Vertical and Horizontal Integration

There are linkages and interdependencies between the Oakland County EOP and other emergency plans. Those plans include:

- National Response Framework (NRF)
- National Disaster Recovery Framework (NDRF)
- Michigan Emergency Management Plan (MEMP)
- Local Municipalities EOP / Support Plans
- Oakland University EOP
- Oakland Community College EOP
- Oakland County Hazard Mitigation Plan
- Continuity of Operations (COOP) Plans
- Oakland County Health EOP
- Water/Wastewater Emergency Response Plans
- SARA Title III, Hazardous Materials Sites Plans
- OCIA Airport Emergency Plan
- Hospitals and Healthcare Facilities EOPs
- Schools EOPs



EOP ANNEXES

The EOP includes annexes and appendices. An annex provides a framework for how the county, along with local first responders and community partners, accomplishes specific response and transition to recovery missions during an emergency or disaster. Each annex describes a concept of operations and the organizations involved in performing tasks. The annex may describe interaction with State or Federal agencies or private sector stakeholders as well.

The annexes may refer to playbooks, job aids, field operation guides (FOG), contact lists, resource lists, training and exercise plans, and reference materials that are maintained by the EOC and not part of the Base Plan.

Emergency Support Functions (ESF)

ESF 1	Transportation (Transportation Infrastructure)
ESF 2	Communications (Warning Systems; EOC Supporting Technologies)
ESF 3	Public Works and Engineering
ESF 4	Firefighting
ESF 5	Emergency Management (Information & Planning)
ESF 6	Mass Care, Shelter and Human Services
ESF 7	Logistics and Resource Support
ESF 8	Public Health and Medical Services (EMS; Fatality Management)
ESF 9	Search and Rescue
ESF 10	Hazardous Materials
ESF 11	Agriculture and Natural Resources
ESF 12	Energy (Energy Infrastructure)
ESF 13	Public Safety and Security / Law Enforcement
ESF 14*	Business and Critical Infrastructure
ESF 15	Public Information and External Affairs
ESF 16	(Not assigned; available)
ESF 17	Animal Care
ESF 18	Military / Defense Support to Civil Authorities

Each ESF has a detailed annex considered a separate section of the comprehensive EOP. Each ESF designates a lead or coordinating agency, primary agencies, and supporting agencies. Core Capabilities and Community Lifelines are aligned with ESFs.

ESF-1 thru 15 are consistent with the Federal ESFs in accordance with the National Response Framework (NRF). ESF 16-18 are defined by this jurisdiction.

*ESF-14 has transitioned to a Business and Critical Infrastructure annex focusing on public-private partnerships and cross-sector activities supporting critical infrastructure protection or stabilizing community lifelines. Pre- and post-disaster recovery operations are now described within a dedicated Recovery Support Annex with short-term and long-term RSFs.

EOP Support Annexes (SA)

- Continuity of Operations (COOP) and Continuity of Government (COG)
- Protective Actions: Evacuation & Shelter-in-Place
- Distribution Management (includes Commodity Points-of-Distribution; Warehouse Operations; and Donations Management)
- Damage Assessment
- Debris Management
- Mass Care and Shelter Operations / Functional Needs Support Services
- Volunteer Management
- Recovery (pre- and post-disaster; long-term recovery process)
- Mass Violence Family Assistance, Reunification, and Recovery Operations

Support Annexes are considered part of the comprehensive EOP. They are maintained as separate documents. They describe important functions during many types of emergencies and disasters. Agencies and organizations performing primary, coordinating, cooperating, or supporting tasks are listed. Stakeholders are described as well.

Hazard-Specific Incident Annexes (IA)

- Severe Weather – Tornado & High Winds
- Severe Weather – Winter Storms or Extreme Cold
- Flooding (includes Dam Emergencies)
- Extreme Heat
- Pandemic / Public Health Emergency
- Aircraft Crash
- Hazardous Materials
- Oil & Gas Pipeline Emergency
- Nuclear Power Plant Emergency
- Terrorism – Prevention, Protection, and Response
- Terrorism – Weapons of Mass Destruction (WMD)
- Civil Unrest
- Cyber
- Courts
- Schools
- Special Events

Incident Annexes are considered part of the comprehensive EOP. They are maintained as separate documents with limited distribution or access. They describe concept of operations, incident management, strategic and operational support, but not tactics. They assign coordinating, primary, and supporting agencies and organizations to specific roles and responsibilities. IAs are often aligned with Community Lifelines as well.

III. Situation Overview

COMMUNITY / JURISDICTION PROFILE

Population

Oakland County has a population of 1,274,395 (U.S. Census data, 2020). It is the second most populous county in the state and is part of the Detroit metropolitan area. There are urban, suburban, and rural areas. The largest employers are hospital-healthcare and automotive.

Approximately 70% of the population are White (non-Hispanic), near 14% Black or African American, about 8% Asian or Asian-American, and nearly 5% Hispanic. Approximately 17% are older persons (over 65 years of age) and about 20% are children (under 18 years of age). There are thousands of people that have disabilities, access or functional needs and there are people that speak languages other than English (such as Spanish, Arabic, and Russian).*

There are 62 cities, villages, and townships in Oakland County. There are 34 municipalities with a population over 10,000 and 16 of them are over 25,000.

The 10 largest populated local municipalities are:

- City of Troy (87,294)
- City of Farmington Hills (83,986)
- City of Southfield (76,618)
- City of Rochester Hills (76,300)
- Waterford Township (70,565)
- City of Novi (66,243)
- West Bloomfield Township (65,888)
- City of Pontiac (61,606)
- City of Royal Oak (58,211)
- Bloomfield Township (44,253)

*Additional detailed demographic information is available via American Community Survey and SEMCOG.

Size and Inland Waterways

Oakland County is 907 square miles (includes land and water). There are over 450 navigable lakes. Rivers in the county include Clinton River, Huron River, River Rouge, Shiawassee River, and Paint Creek.

The 5 largest lakes are:

- Cass Lake
- Orchard Lake
- Walled Lake
- Pontiac Lake
- White Lake

Dams

Oakland County has over 138 dams. Some are regulated. Some are government (State, county) owned or operated, some are private owned. Most of the dams have a low hazard rating. There are 8 high hazard and 13 significant hazard rated dams.

The dams with high hazard potential are:

- Pontiac Lake Dam (White Lake Township)
- Oxbow Lake Dam (White Lake Township)
- Dawson Millpond Dam (Pontiac)
- Lake Louise Dam (Brandon Township)
- Lake Neva Dam (White Lake Township)
- Clarkston Dam (Clarkston)
- Heron Lake Dam (Groveland Township)
- Wildwood Lake Dam (Groveland Township)

Transportation Infrastructure (Airports, Rail, Mass Transit, Highways)

- Oakland County International Airport (Waterford Township)
- Oakland Troy Airport (Troy)
- Oakland Southwest Airport (Lyon Township)
- SMART (mass transit bus system in metro Detroit)
- AMTRAK (passenger rail service; stations in Pontiac, Troy, and Royal Oak)
- Canadian National (CN) Railroad (Ferndale-Royal Oak-Pontiac-Waterford-Davisburg-Holly)
- Lake State Railway (LSRC) utilizing CSX Transport line (Novi-Milford-Highland-Holly)
- I-75, I-96, I-696, I-275
- US24 (Telegraph Road and Dixie Highway)
- M-59, M-1 (Woodward Avenue), M-5, M-10, M-15, M-24, M-102, and M-150

Oakland County airports are general aviation (private, executive-business, cargo / freight). Nearby commercial airports include Detroit Metro Airport in Romulus (Wayne County) and Bishop International Airport in Flint (Genesee County).

K-12 Education / Higher Education Institutions

Oakland County has 28 public school districts and dozens of private, charter, and parochial schools with over 200,000 students and hundreds of buildings. The intermediate school district (ISD) is known as Oakland Schools. There are numerous colleges and universities with campuses in Oakland County to include:

- Oakland University (Auburn Hills & Rochester Hills)
- Oakland Community College (Auburn Hills, Farmington Hills, Waterford, Royal Oak & Southfield)
- Lawrence Technological University (Southfield)
- Walsh College (Troy & Novi)

Hospitals and Healthcare Facilities

Oakland County has twelve (12) hospitals and several 24/7 urgent care centers. There are numerous specialty centers or behavioral health hospitals. There are many long-term care (LTC) facilities and nursing homes in Oakland County.

Oakland County Hospitals	
Ascension Macomb Oakland Madison Heights	Havenwyck
Ascension Providence Novi	Henry Ford Medical Center West Bloomfield
Ascension Providence Rochester	Henry Ford Kingswood Ferndale
Ascension Providence Southfield	Huron Valley Sinai Commerce Township
Beaumont Farmington Hills	McClaren Clarkston Emergency Center
Beaumont Royal Oak	McLaren Oakland Pontiac
Beaumont Troy	Pontiac General
Children's Hospital of Michigan Troy	St. Joseph Mercy Oakland Pontiac

Large Venues and Malls

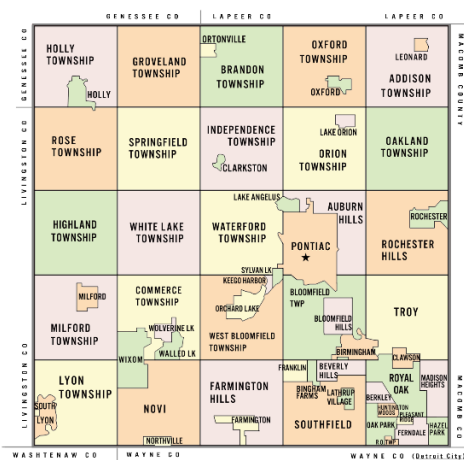
Oakland County has numerous concert-entertainment venues and commercial shopping centers to include:

- DTE Energy Music Theater (Independence Township)
- Meadow Brook Amphitheater (Oakland University, Rochester Hills)
- Suburban Collection Showplace (Novi)
- Great Lakes Crossing Outlets Mall (Auburn Hills)
- Somerset Collection Mall (Troy)
- Oakland Mall (Troy)
- Twelve Oaks Mall (Novi)
- The Village of Rochester Hills (Rochester Hills)

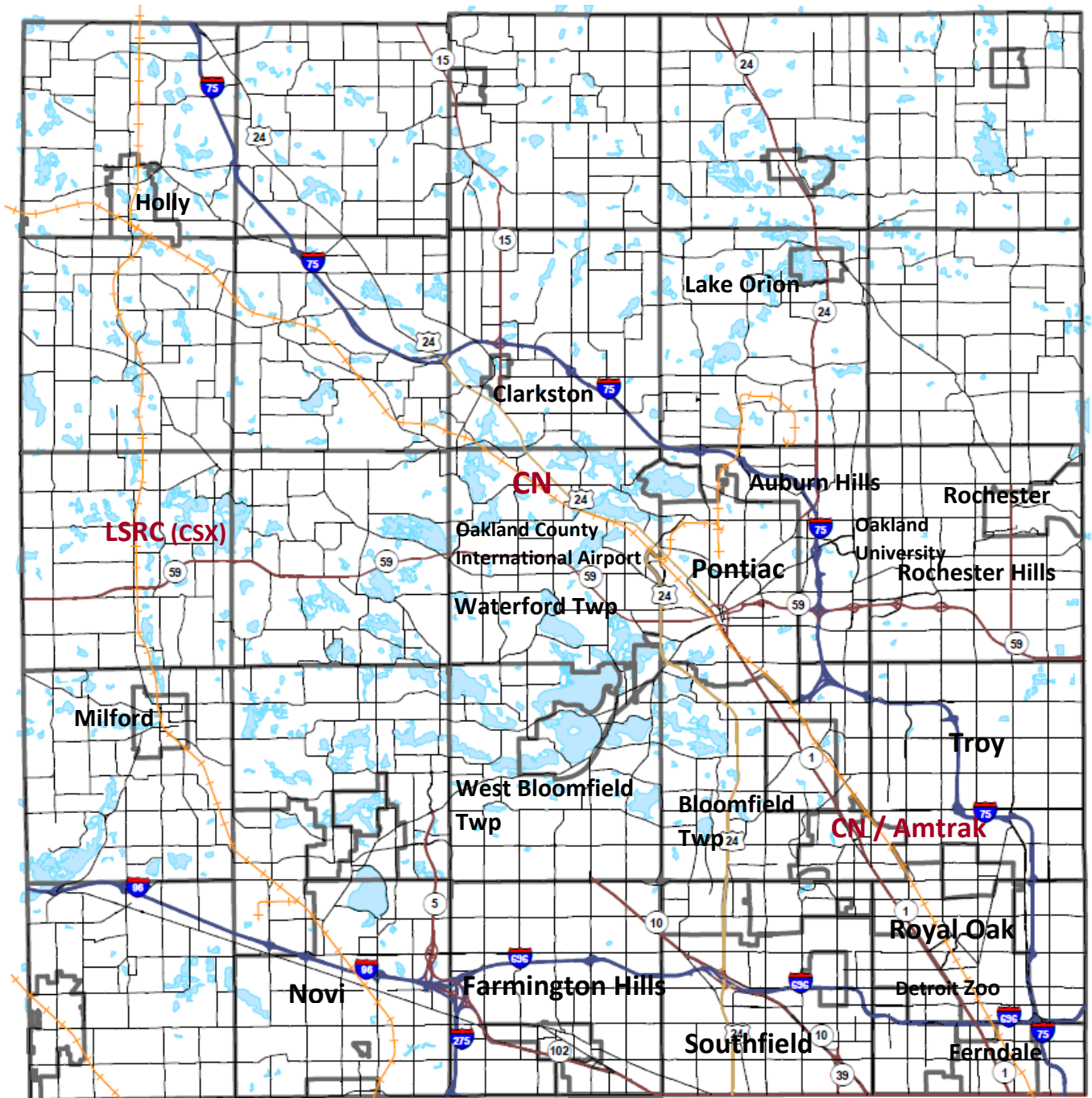
Major Special Events

Oakland County is home to several large annual events to include:

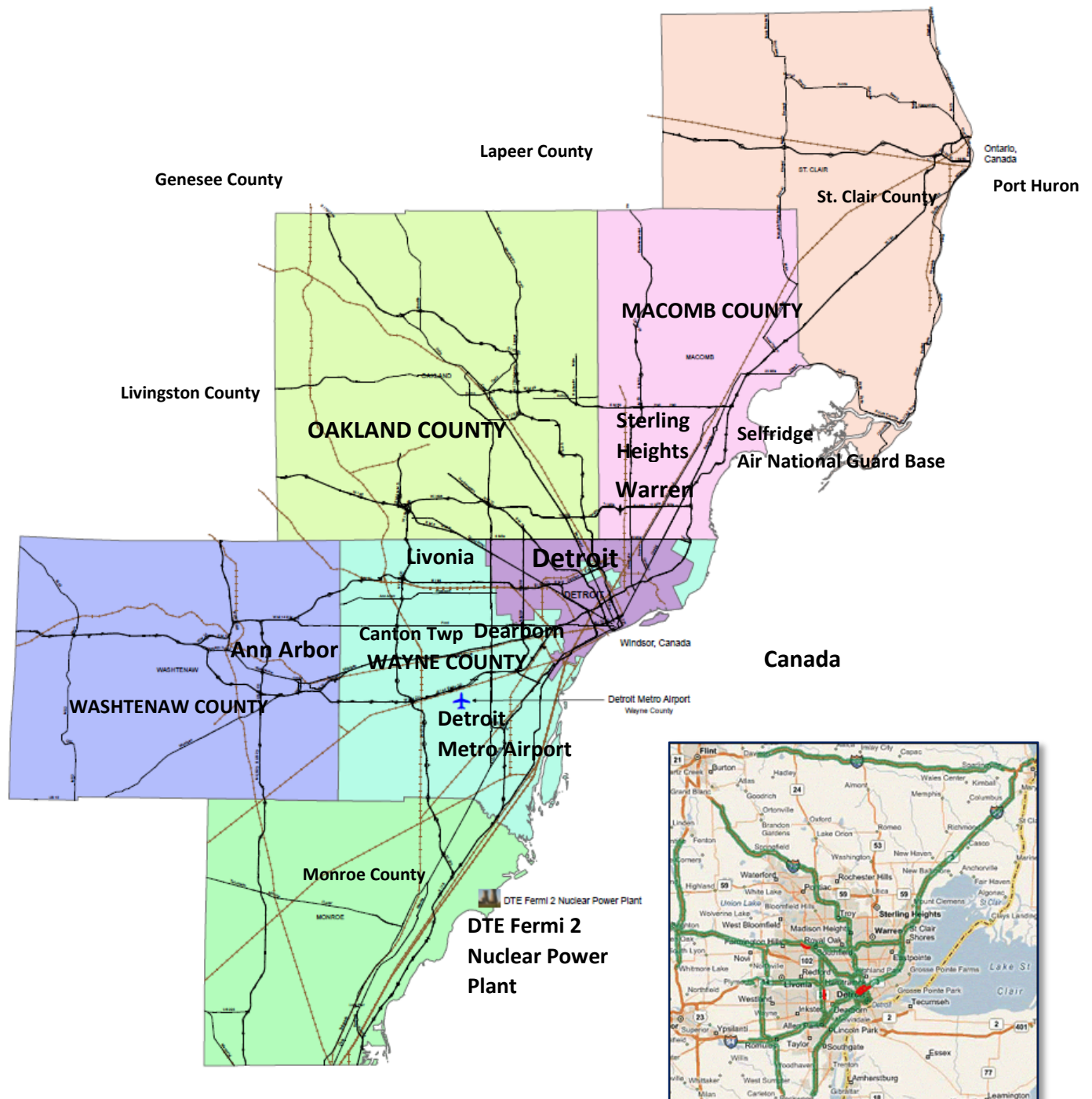
- Woodward Dream Cruise, M1 in Ferndale, Royal Oak, Berkley, and Pontiac in August
- Arts, Beats & Eats Festival on Labor Day weekend in Royal Oak
- Oakland County Fair in July at Springfield Oaks County Park in Springfield Township
- Oakland County International Airport Air Show / Open House in August at OCIA in Waterford Township
- Michigan Renaissance Festival, weekends to include Labor Day weekend in August and September in Holly / Groveland Townships)
- Michigan State Fair on Labor Day weekend in Novi
- Many local fairs and festivals occurring in communities throughout the county
- M1 Road Kill in August and Motor Bella in September in Pontiac



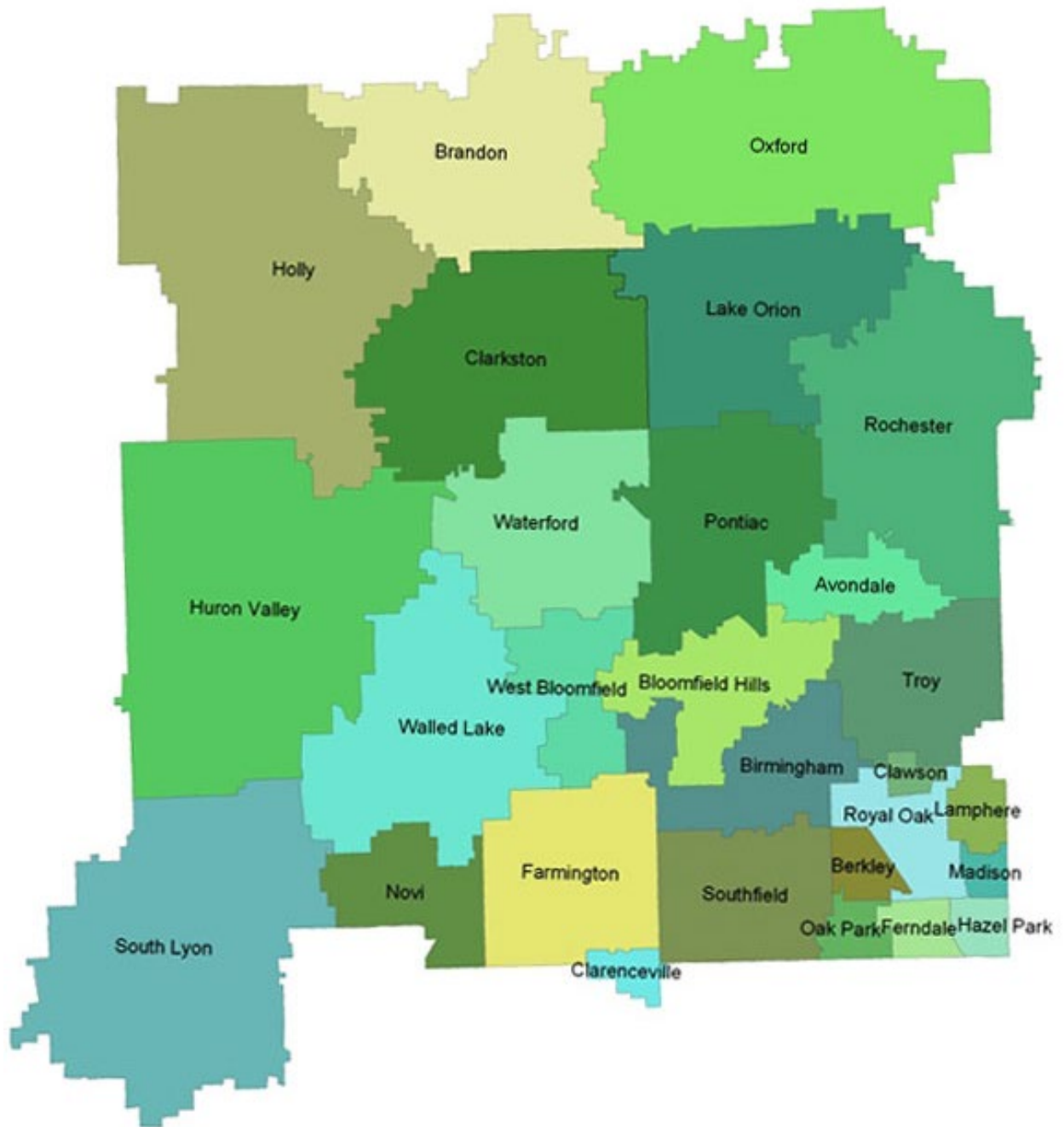
Map of Oakland County featuring lakes, major highways, and railroads



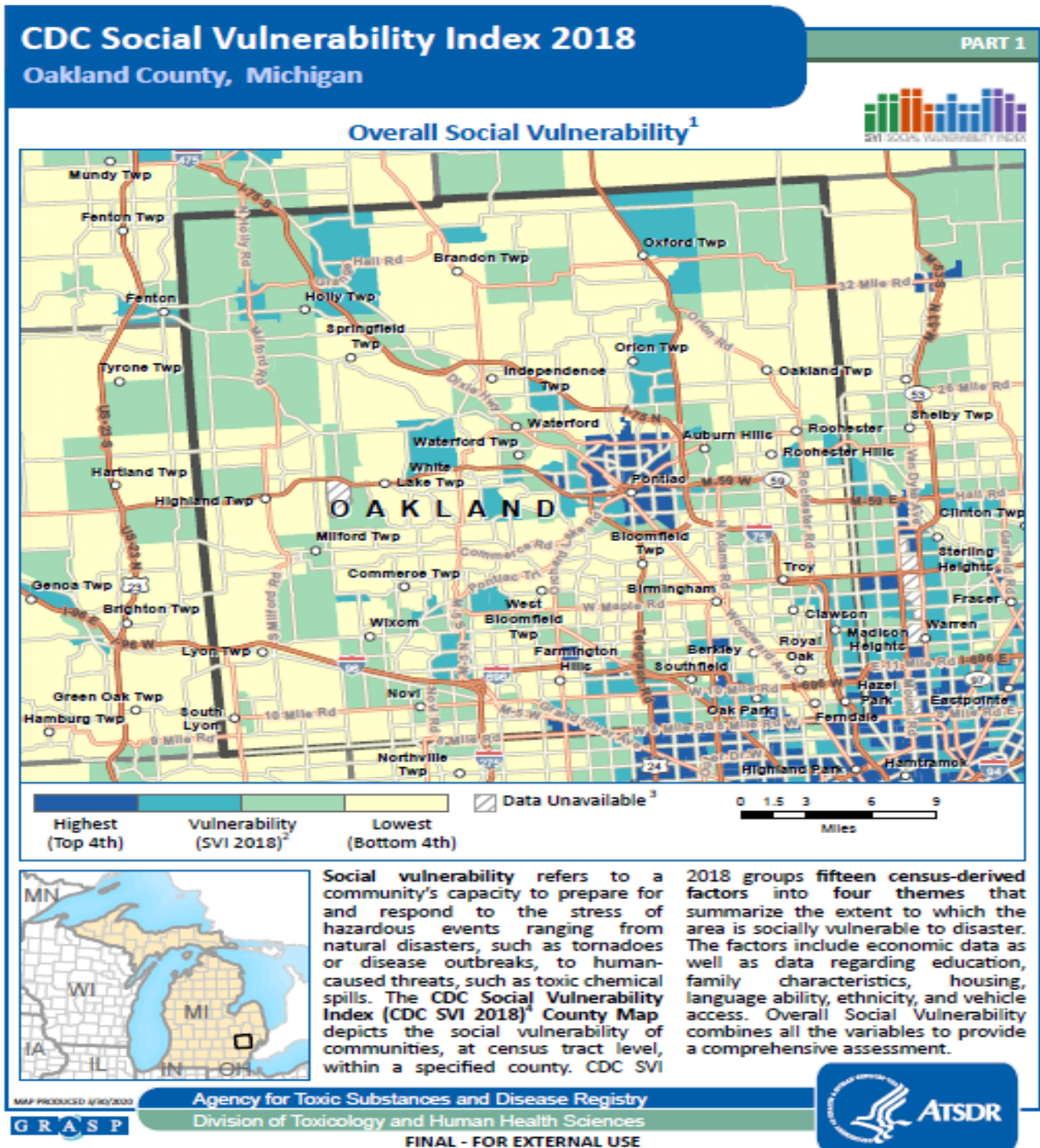
Map of Oakland County within Southeast Michigan (UASI Region)

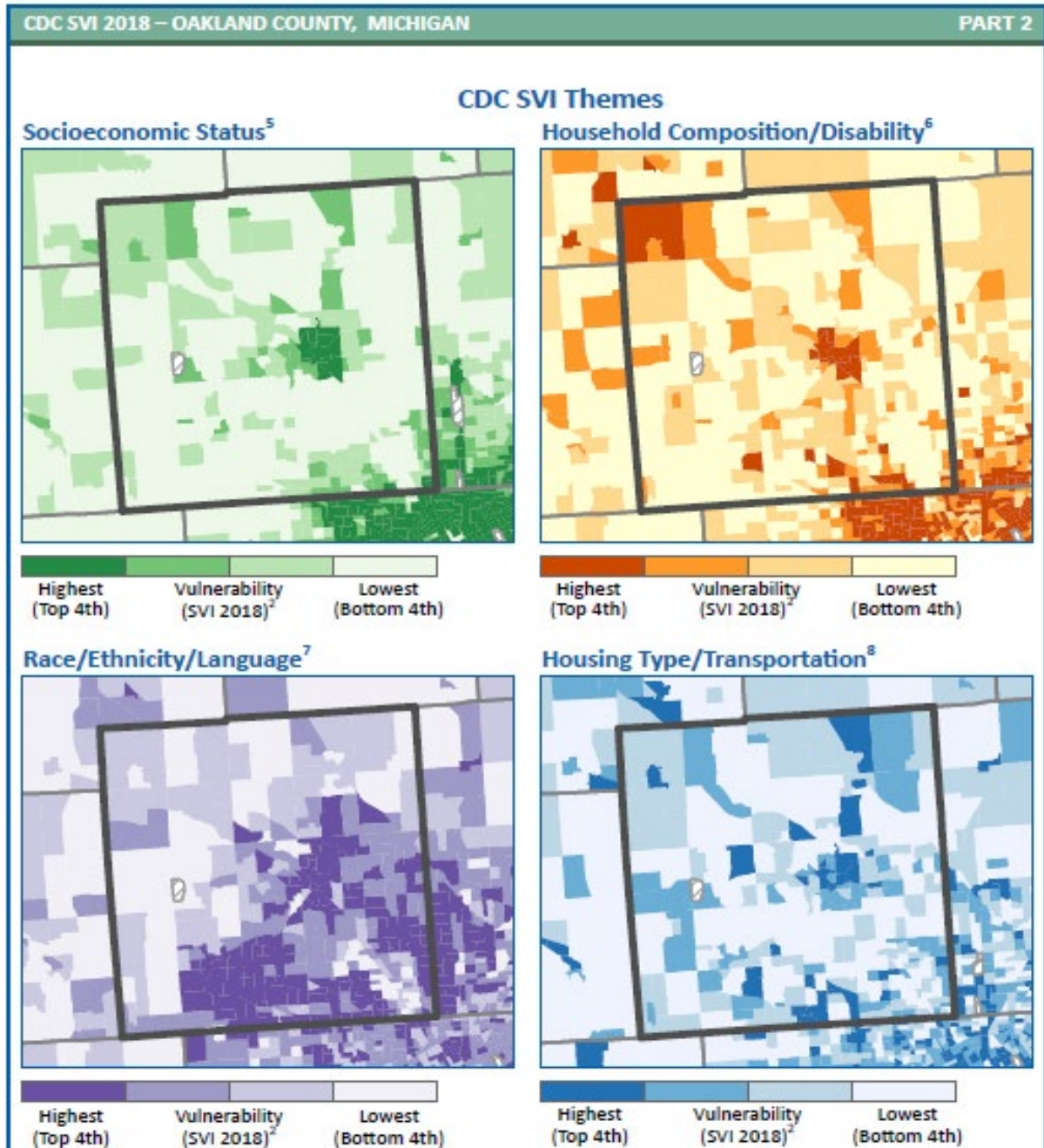


Map indicating Oakland County's 28 public school districts



CDC Social Vulnerability Index (SVI) maps for Oakland County, MI





Data Sources: CDC/ATSDR/GRASP, U.S. Census Bureau, StreetMap™ Premium.

Notes: Overall Social Vulnerability: All 15 variables. Census tracts with 0 population. The CDC SVI combines percentile rankings of U.S. Census American Community Survey (ACS) 2014-2018 variables, for the state, at the same tract level. Socioeconomic Status: Poverty, Unemployed, Per Capita Income, No High School Diploma, Household Composition/Disability: Aged 65 and Over, Aged 17 and Younger, Single-parent household, Aged 5 and over with a disability; Race/Ethnicity/Language: Minority, English Language Ability. Housing Type/Transportation: Multi-unit, Mobile Homes, Crowding, No Vehicle, Group Quarters.

HAZARD ANALYSIS SUMMARY

Oakland County is susceptible to many hazards and threats.

Some vulnerabilities and risks are based on the likeliness to occur and / or the probability of significant impact or cost if it occurs. When rating or conducting a hazard vulnerability assessment we shall consider:

- National Risk Index (FEMA) and Social Vulnerability Index (CDC)
- Historical or frequency of occurrence data
- Potential for loss of life and / or injuries (fatalities and casualties)
- Potential for damage to property and / or the environment
- Economic impact
- Vulnerable populations
- Capability to prevent, protect, mitigate, respond, and recover.

Hazards are normally considered high, medium, or low.

Threat and Hazard Identification and Risk Assessment (THIRA) Overview

Oakland County and the Southeast Michigan Urban Area Security Initiative (UASI) have conducted a Threat and Hazard Identification and Risk Assessment (THIRA). The THIRA identifies the threats and hazards mostly likely to occur and / or those that would have the most impact. It also relies on scenarios and focuses on capability targets. The process involves input from local and regional jurisdictions and partners.

The previous Detroit / SE Michigan UASI THIRA report is from 2015. A current THIRA is under development. The extended COVID-19 Pandemic (actual major disaster) response and recovery in 2020 has postponed the updated THIRA document to 2021-2022. The THIRA document is separate from this plan and is for official use only.

Hazard Mitigation Plan (HMP) and Mitigation Overview

Oakland County has a Hazard Mitigation Plan (HMP) that is coordinated with local jurisdictions, school districts, and other stakeholders (input and adoption by cities-villages-townships). The current HMP meets the State of Michigan criteria and is approved by the Federal Emergency Management Agency (FEMA). The HMP is a separate document from this plan.

The HMP includes a hazard analysis and ranking as well as mitigation strategies, goals, and objectives. Oakland County and local communities are committed to sustainable efforts to eliminate risk or reduce impact of a hazard or disaster. While participating in a formal HMP process ever 4-5 years we are constantly assessing situations for potential mitigation projects especially following an actual disaster or event.

The process for updating Oakland County's HMP is being conducted in 2022-2023. The most current Oakland County HMP is available for review via internet (Oakland County Emergency Management webpage) or by contacting the EM office.

Types of Threats / Hazards

NATURAL	TECHNOLOGICAL	HUMAN-CAUSED
Resulting from acts of nature such as severe weather and includes public health emergencies	Involves accidents or failures of systems to include transportation accidents and infrastructure breaches or failures; could be man-made	Caused by the intentional actions of an adversary
<ul style="list-style-type: none"> ▪ Communicable Disease Outbreak (to include Influenza or other Pandemic) ▪ Drought ▪ Earthquake ▪ Extreme Cold ▪ Extreme Heat ▪ Flood ▪ Tornado ▪ Severe Thunderstorm with High Winds or Hail ▪ Space weather and Celestial impacts ▪ Subsidence ▪ Winter storms (to include heavy snowfall, blizzards, and ice storms) 	<ul style="list-style-type: none"> ▪ Airplane crash ▪ Dam failure ▪ Fire (to include structure fire, wildfire, and urban conflagration) ▪ Hazardous materials release ▪ Oil / Gas Pipeline leak or rupture ▪ Nuclear power plant emergency ▪ Power failure ▪ Train derailment ▪ Water main break 	<ul style="list-style-type: none"> ▪ Civil disturbances ▪ Cyber attacks ▪ Sabotage ▪ School violence ▪ Terrorism (to include complex coordinated attacks) ▪ Terrorism using WMD (Chemical, Biological, Radiological, Nuclear, and Explosives)

Oakland County Hazards

Based on historical data and probability assessment the hazards most likely to occur in Oakland County are as follows:

- Severe weather (tornadoes or severe thunderstorms with damaging straight-line or downburst winds)
- Severe Weather (winter snow or ice storms, snow squalls)
- Flooding (flash floods or pluvial floods involving urban and street surface water and overwhelmed drainage systems following intense or excessive rainfall)
- Hazardous materials (fixed site or transportation such as tanker truck overturn and spill, or a train derailment; inhalation or burn hazards or harmful leak into the environment)
- Natural gas transmission or distribution line leak or rupture
- Blackout (wide-spread power outage)
- Fire (structure fires).

These hazards often result in costly property damage and debris clearance / removal issues or the need to take protective actions such as evacuation or shelter-in-place. They will likely impact community lifelines. They will greatly impact vulnerable populations.

Based on threat assessments the following hazards are less likely to occur, but would have the most impact (fatalities, injuries, illnesses, damage to property and environment, economic) and could be catastrophic events:

- Nuclear bomb or attack involving Weapon of Mass Destruction
- Electromagnetic Pulse (EMP), solar, celestial impact, or via nuclear detonation
- Pandemic or major public health emergency (surges hospitals and healthcare system; causes mass casualties and mass fatalities, requires counter-measures and protective actions such as quarantine, isolation, and social distancing)
- Long-term power outages (many weeks or more)
- Mass violence (complex coordinated terrorist attack or active assailant causing mass casualties and mass fatalities).

CAPABILITY ASSESSMENT

Oakland County shall continuously conduct capability assessments in an effort to prepare, mitigate, respond to, and recover from all-hazards as well as terrorism.

Local response organizations and special operations teams often engage in identifying training and resource needs and gaps. Homeland security grants expended by Oakland County are always within identified investments and to address core capabilities.

Core Capabilities by Mission Areas (National Preparedness Goal)

Prevention	Protection	Mitigation	Response	Recovery
Planning				
Public Information and Warning				
Operational Coordination				
Forensics and Attribution Intelligence and Information Sharing Interdiction and Disruption Screening, Search, and Detection	Access Control and Identity Verification Cybersecurity Intelligence and Information Sharing Interdiction and Disruption Physical Protective Measures Risk Management for Protection Programs and Activities Screening, Search, and Detection Supply Chain Integrity and Security	Community Resilience Long-term Vulnerability Reduction Risk and Disaster Resilience Assessment Threats and Hazard Identification	Critical Transportation Environmental Response / Health and Safety Fatality Management Services Fire Management & Suppression Infrastructure Systems Mass Care Services Mass Search and Rescue Operations On-scene Security, Protection & Law Enforcement Operational Communications Public and Private Services and Resources Public Health and Medical Services Situational Assessment	Economic Recovery Health and Social Services Housing Infrastructure Systems Natural and Cultural Resources

IV. Planning Assumptions

As described in the National Response Framework (NRF) and the Michigan Emergency Management Plan (MEMP) most emergency and disaster situations are handled at the local level (or lowest tier). Most emergencies are handled by local response organizations often utilizing automatic or requested mutual aid by neighboring jurisdictions and multi-jurisdictional special teams in the county or region.

If a disaster situation is wide-spread or has overwhelmed the response capability of a local community, Oakland County may activate this plan and the county Emergency Operations Center (EOC) to coordinate and support relief efforts.

Most of the cities, villages, and townships are under Oakland County's emergency management program (EOP, EOC). Five communities within Oakland County have their own State-designated emergency management programs (EOP, EOC). They are City of Farmington Hills, City of Southfield, City of Birmingham, Bloomfield Township, and Waterford Township. Oakland University and Oakland Community College also meet criteria to have an emergency management program. A major emergency or disaster affecting those communities and institutions of higher education will likely impact communities under the county EM program and require some level of county plan activation.

Oakland County shall activate all plans and systems in an effort to respond effectively and seek eventual return to normalcy. Public safety, health, and welfare are always priorities. Plans are dependent upon primary and supporting agencies implementing standard operating procedures / protocols and statutory or regulatory responsibilities. Local municipalities are expected to activate their Support Plans to the county EOP. Response and recovery efforts shall focus on unmet needs.

Severe weather incidents often result in blocked roadways, power outages, and property damage (often covered by insurance). Some incidents, such as train derailments with hazardous materials and pipeline leaks, will require major response and recovery effort by the responsibility party or owner of the private sector infrastructure.

Disasters are likely to have a cascading effect. Any natural, technological or human-caused incident may lead to mass casualties, impact drinking water, or interrupt essential services.

While most emergencies are handled within hours (one or two operational periods) some may take several days to handle. A major disaster may take several weeks or months to achieve response objectives and transition to recovery.

A major incident or disaster may have significant impact on senior citizens, poverty-stricken, children, and people with disabilities and others with access and functional needs. An incident that requires mass evacuation and care of a large displaced population shall require assistance from regional and State partners, private sector, non-government organizations (NGO), and private non-profit (PNP) organizations. Mass transportation availability, ability to establish multiple shelters, and animal welfare capability are potential gaps.

Concept of Operations (CONOPS)

V. Emergency Management / Disaster Declaration Process Overview

Emergency management in Oakland County is a continuous process that includes preparedness activities, coordinating and supporting response operations, and incident management. There is a pre-incident / pre-disaster phase, a notification and initial action phase, a response phase, an extended response or a transition-to-recovery phase, and a recovery phase.

The overall responsibility for activating or deactivating the county EOP and EOC, activating resources, and directing emergency response and recovery is the Oakland County Executive, the Chief Elected Official (CEO) for the county. The system is engaged and activated by Oakland County Emergency Management based upon threat conditions or if an incident has occurred that is worsening or clearly overwhelming a local jurisdiction under the county emergency management program.

Local cities, villages, and townships under the county EM program with a population of 10,000 or more shall have an updated and approved support plan to the county EOP. Several local communities (most with a population of 25,000 or more) have developed and maintain fairly comprehensive EOPs and have local jurisdictional EOCs. They include Troy, Rochester Hills, Novi, Auburn Hills, and West Bloomfield Township.

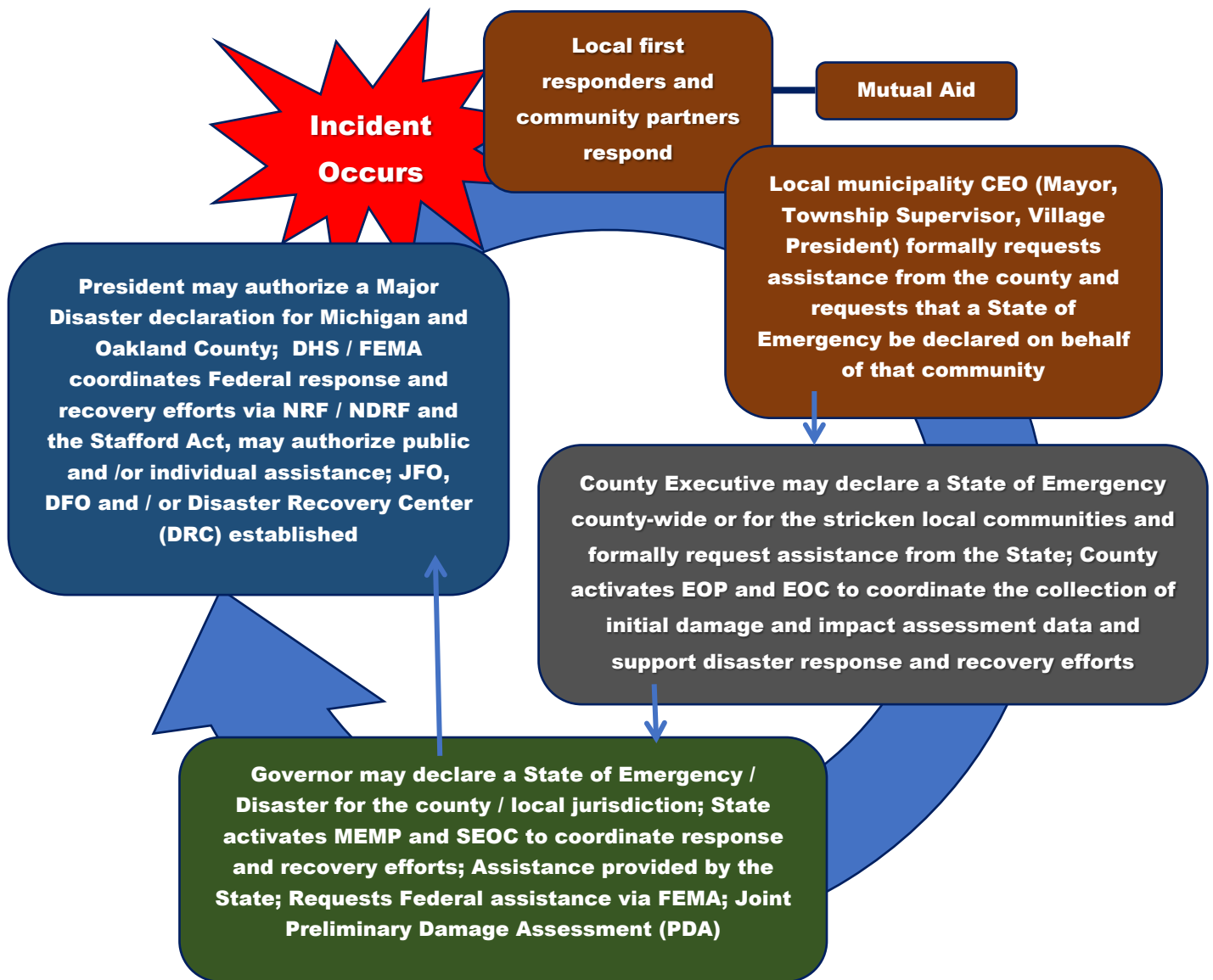
Many local community agencies / authorities having jurisdiction (AHJ) such as fire, rescue, police, and others participate in Mutual Aid Agreements (MAA) and multiple jurisdiction special operations teams (HAZMAT, USAR / Technical Rescue, SWAT and Mobile Field Force) with shared resources and protocols.

The county executive may declare that a State of Emergency exists for Oakland County if there is wide-spread impact or on behalf of a single local municipality upon official request by the CEO (Mayor, Township Supervisor, or Village President) if that jurisdiction has exhausted resources and capability to respond and recover effectively.

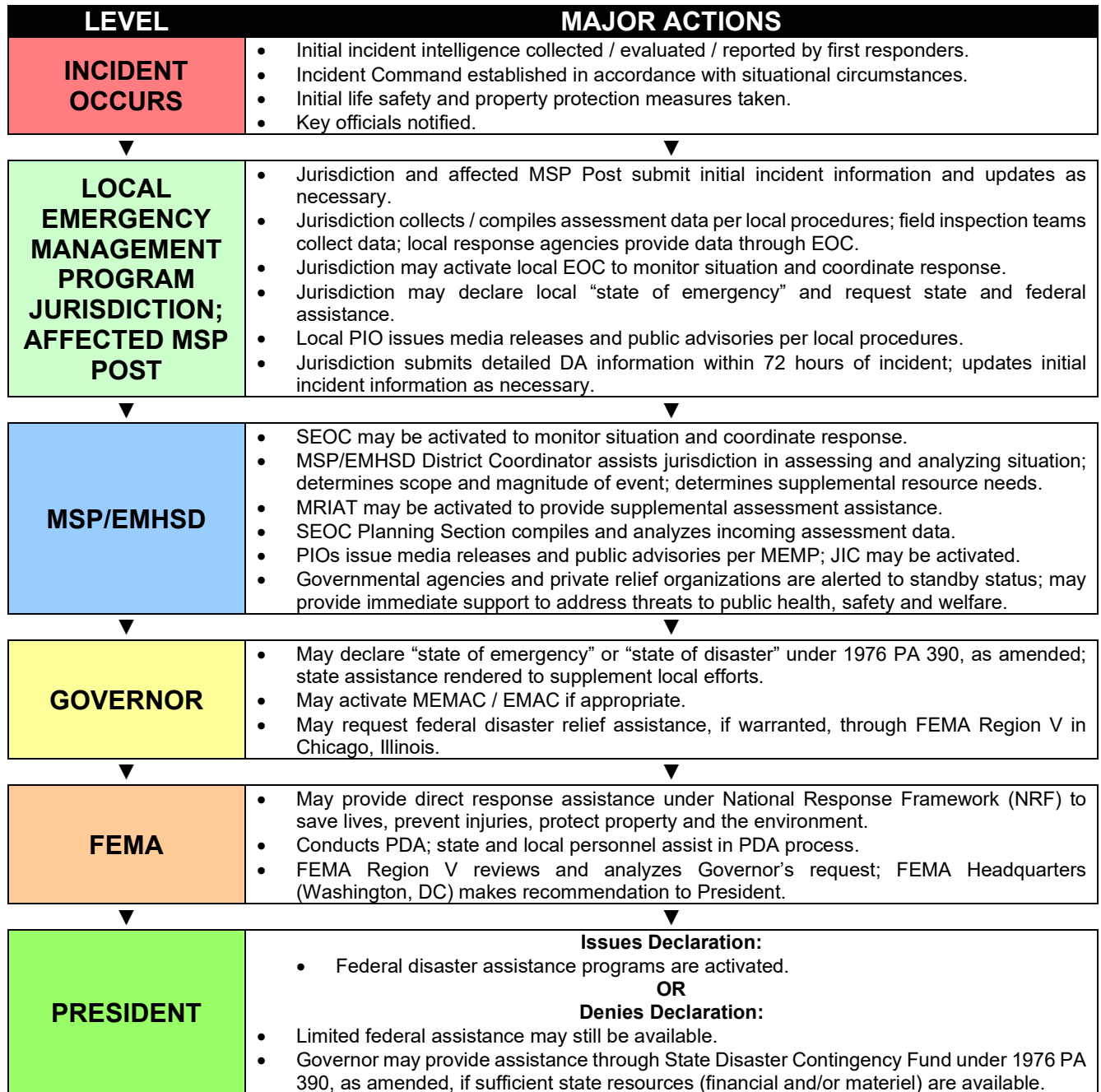
Some incidents of significance will automatically trigger activation of part of the county EOP and at least partially activate the county EOC to include a worsening public health emergency or terrorist attack, to conduct damage and impact assessment, provide public warning information, or to coordinate protective actions such as large-scale evacuation. In Michigan, only the governor may order (compel) the evacuation of a community or area.

Others having authority (such as a fire chief or his / her command designee to protect public safety under Public Act 207 or a public health officer to prevent the spread of disease under Public Act 368) may recommend, determine, or direct certain protective actions.

The emergency management authority, request for assistance, and declaration of State of Emergency / Disaster process in Michigan is established within Public Act 390 of 1976, as amended.

Emergency / Disaster System

Michigan Emergency / Disaster Declaration Process



DA Damage Assessment
EMAC Emergency Management Assistance Compact
MICIMS Michigan Critical Incident Management System
MEMP Michigan Emergency Management Plan
MRIAT Michigan Rapid Impact Assessment Team

SEOC State Emergency Operations Center
PDA Preliminary Damage Assessment
PIO Public Information Officer
JIC Joint Information Center

Format for Requesting a Governor's Emergency or Disaster Declaration and State Assistance

Submission date: [\(insert date\)](#)

To: Governor, State of Michigan

On [\(insert date\)](#), pursuant to Section 10 of 1976 PA 390, as amended, I declared that a "state of emergency" exists in [\(insert name of political jurisdiction\)](#) due to [\(describe the type of incident – e.g., tornado, flood, ice storm, etc.\)](#) which caused widespread and severe damage, injury or loss of life and property. The response and recovery elements of the [\(insert name of political jurisdiction\)](#) Emergency Operations Plan have been activated, and local resources are being utilized to the fullest possible extent. Despite these efforts, local resources are not sufficient to cope with the situation.

Therefore, in accordance with Section 12 of 1976 PA 390, as amended, I deem this incident to be beyond the control of this political subdivision and I respectfully request, for and on behalf of the citizens of this political subdivision, that you declare that a "state of disaster" or "state of emergency" exists therein and that consideration be given, if conditions warrant, to petitioning the President of the United States for assistance provided by Public Law 93-288, as amended. In support of this request, we will submit specific damage assessment information through official channels and in accordance with the guidance provided by the Emergency Management and Homeland Security Division of the Michigan State Police (MSP/EMHSD) within three to seven (3-7) days of this incident, unless circumstances dictate an earlier submittal as requested by the MSP/EMHSD. Furthermore, I understand that this request **will not** be acted upon without sufficient damage assessment information to substantiate the need for assistance, and I acknowledge that it is the responsibility of [\(insert name of political jurisdiction\)](#) to provide that information in the manner prescribed by the MSP/EMHSD.

Specifically, I request the following state assistance to supplement local response and recovery efforts: [\(Describe the assistance needed to cope with the situation – e.g., state law enforcement officers to staff eight access control points; five dump trucks and front-end loaders plus operators for debris removal; 50 traffic barricades for traffic control; state law enforcement officers to provide 24-hour security for eight severely damaged schools; forestry crews to assist with hazard tree removal; engineers to assess damaged roads, bridges, and drains; etc.\)](#).

Accordingly, be advised that [\(insert name/title of local official – usually the Emergency Manager\)](#) will provide liaison and coordination with state and federal authorities for assistance related to this incident, and in accordance with Section 14 of 1976 PA 390, as amended, he/she is directed to transmit this request to the MSP/EMHSD.

Authorized by: [\(insert name/title of chief executive\)](#)

Signature: _____

Submittal Instructions

1. This request must be promptly forwarded (**via the MI CIMS as an attachment to the EM Program Status board, or by email, facsimile, or LEIN as a backup only if the MI CIMS is inoperable or not accessible / available**) to the Commanding Officer of the Emergency Management and Homeland Security Division, Michigan State Police (email address: MSP-EMHSD@michigan.gov; facsimile #: 517-284-3857; LEIN code: ELOP, and the appropriate MSP/EMHSD District Coordinator, in the same manner as the local "state of emergency" declaration.
2. If the MI CIMS is inoperable or not accessible / available and using email, facsimile, or LEIN will delay the information, the telephone should be used. If telephone service is not available, radio may be used. MI CIMS or hardcopy confirmation must be forwarded as soon as possible.
3. This request **will not** be acted upon without sufficient information to substantiate the need for assistance.
4. In accordance with Section 12 of 1976 PA 390, as amended, the chief executive official of a county or municipality may initiate or authorize this request for their political subdivision.
5. A copy of this request should be kept on file with the local Clerk (County Clerk for counties; City or Township Clerk for municipal emergency management programs).

Nov 2018

Format for Declaring a Local "State of Emergency"*

Submission date: (insert date)

To: Deputy State Director of Emergency Management and Homeland Security – Emergency Management and Homeland Security Division, Michigan State Police; District (#) Emergency Management and Homeland Security Division Coordinator

On (insert date the incident occurred) the (insert name of political jurisdiction) sustained widespread or severe damage, injury or loss of life or property caused by (describe the type of incident – e.g., tornado, flood, ice storm, etc.). As a result of this situation, the following conditions exist: (describe the impact on the jurisdiction and the area affected – e.g., many homes and businesses destroyed; numerous deaths and injuries in the southern part of the county; high school and four elementary schools severely damaged; only bridge connecting the east and west sections of the county completely destroyed; etc.).

Therefore, as (insert title of chief executive) of (name of political jurisdiction), in accordance with Section 10 of 1976 PA 390, as amended, I hereby declare that a "state of emergency" exists within our jurisdiction as of (insert date), and that local resources are being utilized to the fullest possible extent. The response and recovery elements of our emergency operations plan have been activated.

Authorized by: (insert name/title of chief executive)

Signature: _____

*Cities, Villages, and Townships under the county EM program shall coordinate a local declaration and request for assistance through the Oakland County EOC (addressed to the County Executive thru the County Emergency Management Coordinator).

VI. Local Emergency Response Plans in Support of County EOP

Local municipalities are responsible for developing and maintaining an Emergency Operations Plan (EOP) / Support Plan to the county EOP and providing a copy of that approved plan to Oakland County Emergency Management every four years.

The plan shall include a current signature of the jurisdiction CEO or agency administrator and shall identify a lead or primary agency for each emergency function. The agency or organization assigned to a function shall maintain standard operating procedures / guidelines.

A local EOP support plan should address the following functions:

- Direction and Control to include Incident Command System (ICS)
- Finance, Logistics, and Administration
- Warning and Communications
- Damage Assessment
- Fire & Rescue Services
- Law Enforcement
- Health and Emergency Medical Services
- Public Works to include Debris Management
- Public Information
- Human Services / Mass Care to include coordinating or establishing shelters, cooling centers, warming centers, and commodity points of distribution (POD), supporting family assistance centers / reunification, and providing functional needs support services
- Hazardous Materials Response
- WMD / CBRNE (Terrorism) Response
- Volunteer Coordination (such as CERT, auxiliary forces, volunteer reception centers)

Additional documents or appendices to an EOP should include resources lists, contact lists, and a copy of applicable mutual aid agreements (MAA) or memorandums of understanding (MOU).

Local communities shall adoption the National Incident Management System (NIMS) and should also adopt the Hazard Mitigation Plan (HMP). The U.S. Department of Homeland Security (DHS) / Federal Emergency Management Agency (FEMA) provides helpful guidance concerning planning, NIMS, National Preparedness Goal, Public Assistance, and Debris Management.

Local response agencies and specialty teams that receive grant funding support are expected to participate in planned drills and exercises and provide representatives to the local planning team known as the Grant Allocation Committee (GAC).

The Michigan State Police Emergency Management and Homeland Security Division (MSP / EMHSD) provides the EMHSD / MSP Pub 204 Local Support EOP Guide. Oakland County Emergency Management coordinates and provides technical assistance to local municipalities required to develop and maintain Support Plans to the county EOP.

Direction, Control, and Coordination

VII. National Incident Management System (NIMS) and Incident Command System (ICS)

All Oakland County and local response organizations to include the Oakland County Sheriff's Office (OCSO), Oakland County Health Division (OCHD), Oakland County Incident Management Team (IMT), and Oakland County Hazardous Materials Response Teams (HMRT) shall utilize the Incident Command System (ICS) in accordance with the National Incident Management System (NIMS). Oakland County and local municipalities have adopted NIMS. Copies of resolutions are maintained in files at the Oakland County Emergency Management and Homeland Security Department.

Oakland County has been proactive and continues to implement NIMS. County and local responders, EOC personnel, and disaster relief forces are trained to an appropriate level of NIMS and ICS. NIMS and ICS are an objective in all drills and exercises.

NIMS is a comprehensive, nationwide, systematic approach to on-scene incident management, EOC / Multi-Agency Coordination, and the Public Information System. It is:

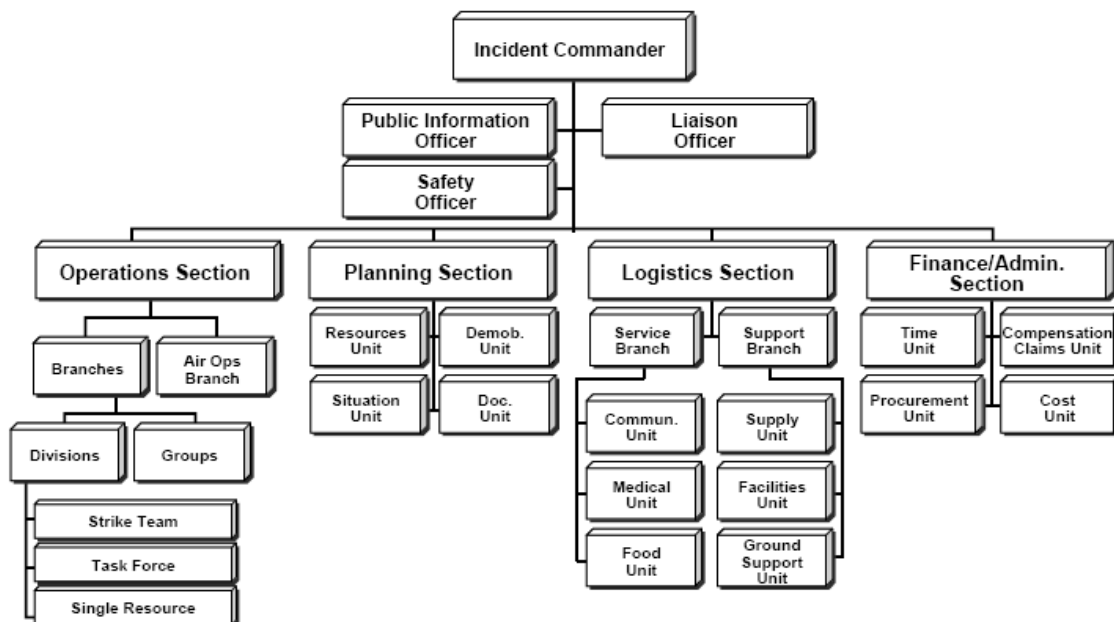
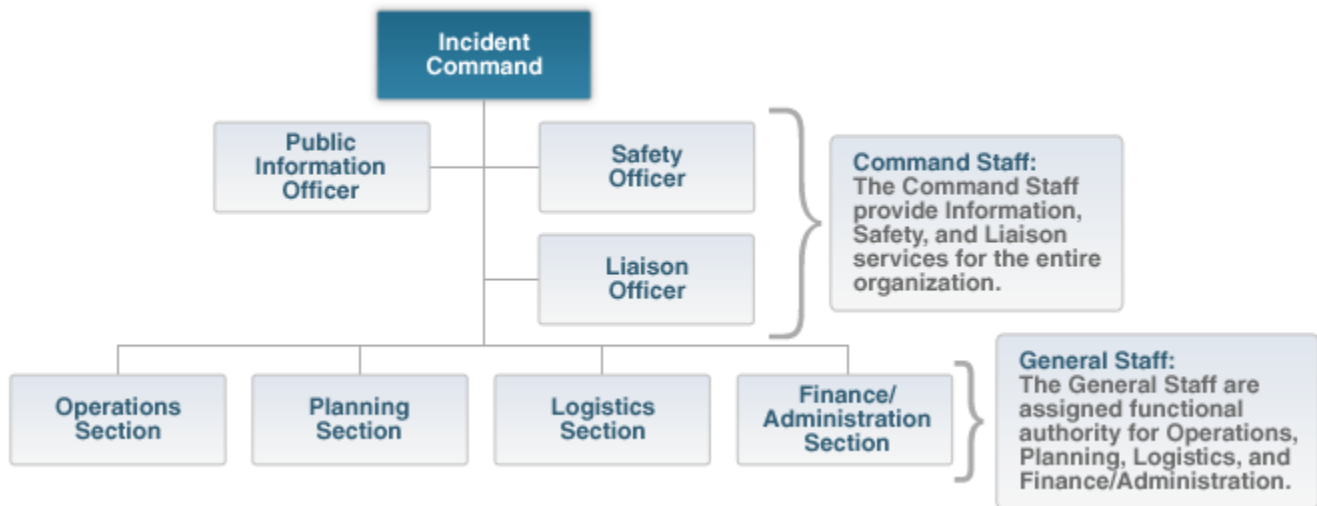
- Essential principles for a common operating picture, maintaining situational awareness, and communications interoperability.
- Improves safety, accountability, span of control, unity of command, and ability to manage by objectives.
- Promotes a standardized, flexible, and unity-of-effort approach and is scalable so it may be used for all incidents (from day-to-day to large-scale).

NIMS and ICS are part of the concept of operations for each EOP Emergency Support Function (ESF) Annex and hazard-specific Incident Annex (IA). ICS / Unified Command, interface with the county EOC, and the development of an Incident Action Plan (IAP), shall be used for all disaster situations, hazardous materials incidents, and terrorist attacks.

Area Command (AC) or Unified Area Command (UAC) may be used when there are multiple ICs or jurisdictions involved in responding to the same incident, there are complexities, to provide critical resource prioritization and allocation, or the incident is wide-spread or has no "ground zero" such as a public health emergency. AC may be co-located with the EOC or maintained separate closer to the scenes. Incidents or disasters that may be appropriate for an area command (or incident complex with multiple IC / UCs and the EOC) would be a complex coordinated attack (multiple scenes) and storm or flood impacting multiple communities.

Basic ICS structure includes the command staff which is the Incident Commander (IC), Public Information Officer (PIO), Liaison Officer, and Safety Officer (as well as assistants). The general staff positions are within the Operations Section, Planning Section, Logistics Section, and Finance / Administration Section. An Intelligence / Investigation function (Section, Group, Unit, or Officer) may be added to the ICS organization.

Basic ICS Structure

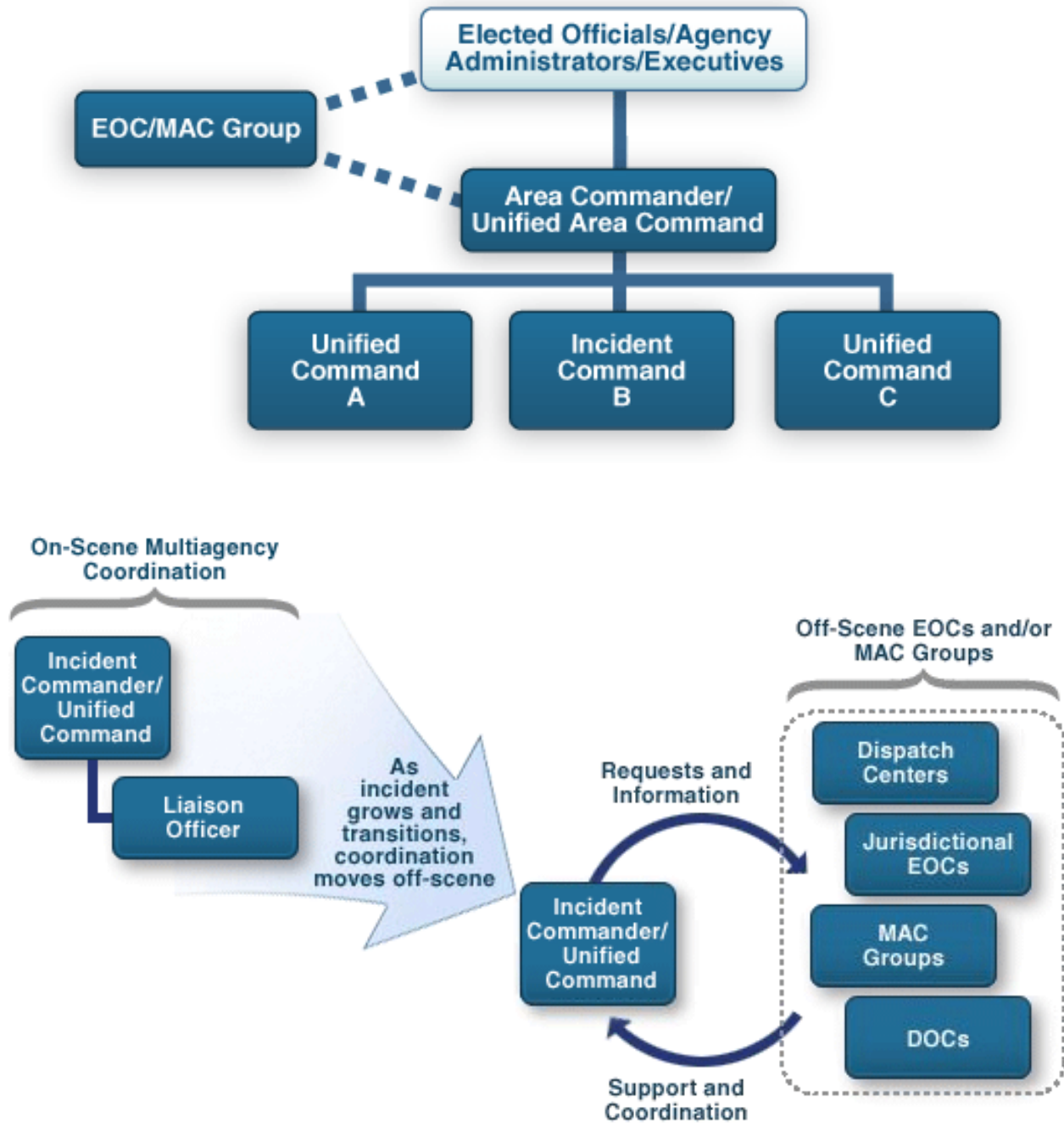


ICS Facilities

- Incident Command Post (ICP)
- Staging Areas
- Base
- Camp
- Heli-spot or Heli-base (Air Operations)

Both the EOC and the ICP may require security. Branches / Groups under Operations are always by Function. Divisions under Operations are always based on Geographic areas.

NIMS Multi-Agency Coordination



Some federal agencies such as the U.S. Coast Guard (USCG), U.S. Environmental Protection Agency (EPA), and the Federal Bureau of Investigation (FBI) have statutory responsibility for response to certain incidents. They may coordinate or integrate directly with affected jurisdictions. They are often part of Unified Command with personnel and resources assigned to operations, planning, logistics, and intelligence / investigations.

VIII. Emergency Operations Center (EOC)

The primary **Oakland County Emergency Operations Center (EOC)** is within the Oakland County government campus and adjacent to the OCSO communications center located at:

**1200 N. Telegraph Rd, Building 47 West
Pontiac, MI 48341**

The alternate EOC is within the Troy Police Department (city EOC) and adjacent to the Troy communications center located at 500 W. Big Beaver Rd, Troy, MI 48084.

The county EOC is coordinated by the Oakland County Emergency Management and Homeland Security Department Director or Chief of Emergency Management Division at the direction of the Oakland County Executive.

Oakland County Emergency Management has a duty officer or person on-call 24/7. The primary phone number for the county EOC is: **248-858-5300**

Oakland County EOC Activation Levels	
LEVEL 1 – FULL ACTIVATION	
LEVEL 2 – PARTIAL ACTIVATION	
LEVEL 3 – MONITORING	
LEVEL 4 – NORMAL (NOT ACTIVATED) / STEADY-STATE	

EOC Activation Status Levels

4 – Normal (Not Activated): Day-to-day operations and normal staffing by OCEMD. Considered steady-state.

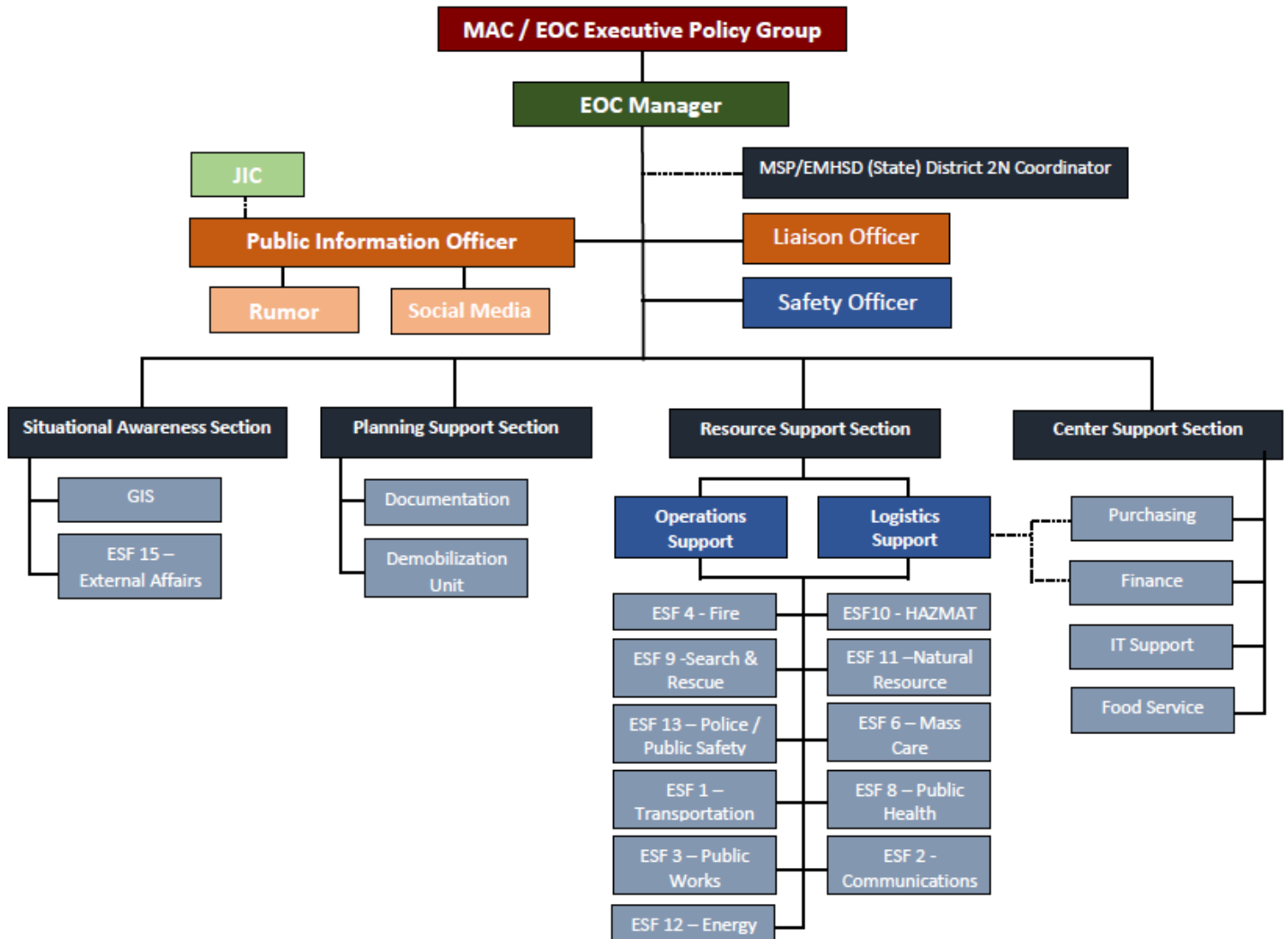
3 – Monitoring: OCEMD person on-call 24/7; wide-area or non-specific threat conditions; or a local emergency situation in-progress with potential need for assistance. Example: NWS issues a Tornado or Severe Thunderstorm Warning for Oakland County or there is a large special event being monitored and supported by the EOC. May be considered an enhanced steady-state.

2 – Partial: Limited activation by the Oakland County EMD Chief at the direction of the County Executive. EM staff, specific ESF reps, and technical specialists as needed for the situation. MSP EMHSD District 2 North Coordinator notified. Status is entered in MI-CIMS.

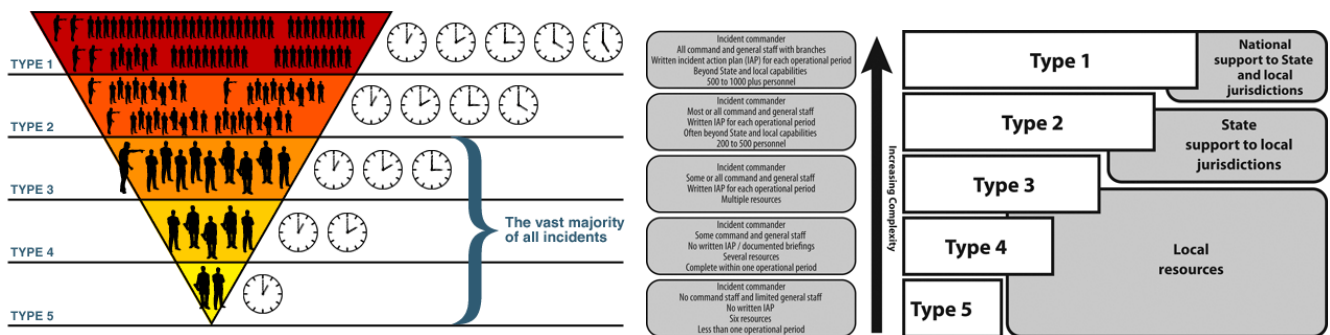
1 – Full: As directed by the County Executive; recommended by the Oakland County EMHSD Director or EMD Chief; may be requested by Oakland County Health Officer or requested by a local CVT (or multiple CVTs) during a State of Emergency / Disaster declaration. Coordination with MSP EMHSD District 2 North Coordinator and State EOC. Status and updates are entered in MI-CIMS.

There may be a **Virtual EOC** activation under certain circumstances (described in ESF-5).

EOC Organization Chart



Incident Types (based on complexity, number of resources and operational periods)



The State Emergency Operations Center (SEOC) located in Lansing is managed by the Michigan State Police Emergency Management and Homeland Security Division. The Michigan National Guard is deployed by order of the Governor. A local request for those assets must be through the county EOC to the SEOC.

The county EOC is the primary activation point for the **county-wide outdoor warning siren system**. The sirens are utilized for tornado warnings and severe thunderstorm warnings with damaging winds 70 mph or greater. The EOC staff coordinate with the National Weather Service (NWS) Detroit / Pontiac office (White Lake) for decision support during severe weather.

The county EOC is also an alerting authority for the **Emergency Alert System (EAS)** and **Wireless Emergency Alert (WEA)** via the FEMA Integrated Public Alert & Warning System (IPAWS). The EOC also utilizes **OakAlert** (CodeRed) as a local emergency notification system.

There is an EOC Standard Operating Guideline (SOP), and associated Job Action Sheets or checklists, that supports ESF-5 (Emergency Management). There is a procedure and systems in place for notifying / activating key personnel and ESF representatives when activating the EOC. There are procedures for de-activating the EOC.

The EOC Planning Support Section shall develop an EOC Incident Action Plan (IAP) for each operational period (often 12-24 hours, may be a week or month). The EOC IAPs are posted to the incident created in OakEOC.

Each ESF has a manual or job aid book in the EOC (may be available via OakEOC as well). All EOC staff and ESF reps working in the EOC shall maintain an activity log (ICS-214) for each operational period. All messages and resource requests shall be logged and assigned. All documents during a disaster are kept for at least 10 years.

During an EOC activation there may be circumstances where staffing should be limited or a partial virtual concept is employed. These personnel shall work from their offices or departmental operations center (DOC).

OakEOC (D-LAN)

The county EOC utilizes an emergency management software for logging incidents, monitoring special events, sharing critical information, and processing resource requests. The tool is made available for use by local responders and officials and EOC ESF primary and supporting agencies after receiving training and creating an OakEOC log-in account.

Michigan Critical Incident Management System (MI-CIMS)

The county EOC actively participates in MI-CIMS (WebEOC). MI-CIMS is a web-based tool utilized by the State, local emergency management officials, and critical infrastructure (such as hospitals) to provide situation reports, file damage and impact assessment reports, seek resources, and exchange information concerning an event or incident.

Joint Information Center (JIC)

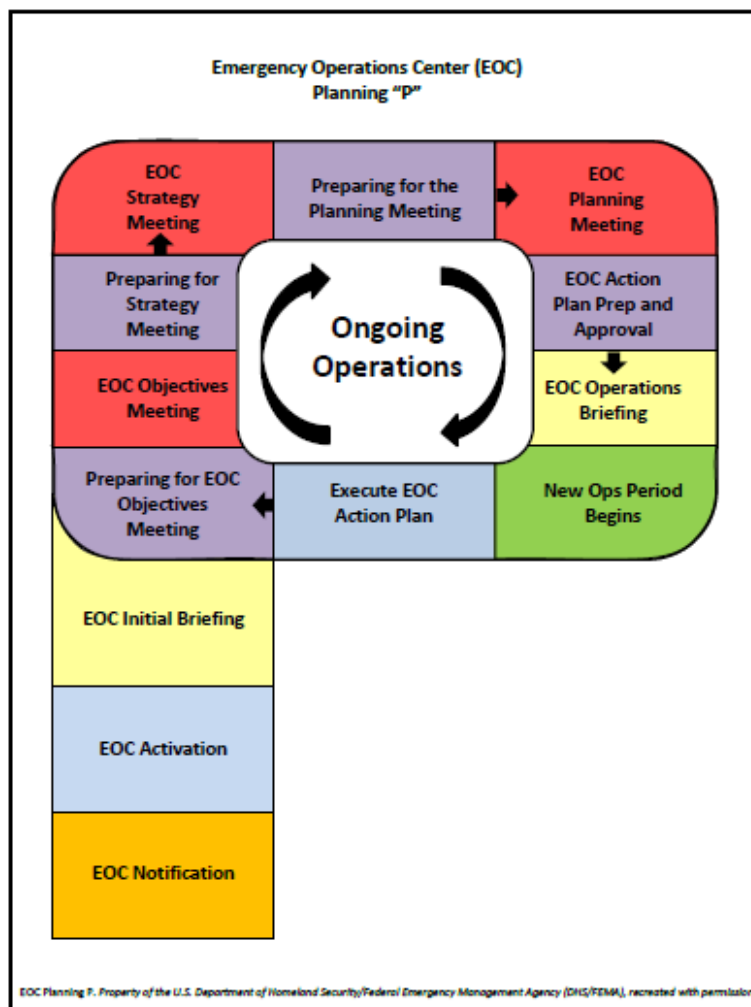
A Joint Information Center (JIC) may be an important component of the system during any disaster situation. The JIC and PIO position is consistent with NIMS and ICS. The JIC may be established co-located with the EOC, near the incident scene, at a location designated by the EOC PIO, or be conducted virtually. This is further described in ESF-15.

ADA Coordinator and DEI Advisor

Oakland County government has a designated Americans with Disabilities Act (ADA) coordinator (point of contact). This person is someone designated by Human Resources or Risk Management who shall serve as the EOC ADA advisor during activation. The position is part of the MAC Executive / Policy Group.

Someone from the MAC Executive / Policy Group may also designate a person to serve as EOC Diversity, Equity, and Inclusion advisor during activation.

EOC Planning "P"



Organization and Assignment of Responsibilities

Common Priorities

1. Life Safety

Protect lives and prevent injuries or illness. Provide for the health, safety, and welfare of employees, responders, and the public.

2. Incident Stabilization

Gain control of the situation. Implement strategies and tactics that may keep the situation from worsening or lessen the impact on the community. This may begin with establishing and controlling a perimeter.

3. Property / Environment Conservation

Implement strategies and tactics to protect property from damage and protect the environment from contamination.

4. Recovery

Transition to recovery and return to normalcy (if possible). Provide disaster relief or available assistance. Provide crisis counseling or mental health services to survivors and responders.

Specific considerations for Emergency Management / Incident Management

- Continuity of Operations (COOP)
- Continuity of Government (COG)
- Mobilizing and utilizing essential staff and maintaining critical systems
- Stabilize Community Lifelines
- Emergency Public Warning / Risk Communication
- Protective Actions
- Public Information and media relations
- Resources Management
- Volunteer Management
- Damage and Impact Assessment
- Debris Management
- Family Assistance / Reunification
- Liaison with county departments / offices / elected officials
- Liaison with local city-village-township officials
- Liaison with state and federal officials
- Liaison with the private sector and non-government organizations
- Information sharing, rumor control, addressing expectations
- Participate in periodic briefings and meetings
- Participate in training and exercises
-

IX. Coordinating, Primary, and Key Supporting Agencies

ESF Annexes – Organization and Assignment of Responsibilities

Each Emergency Support Function (ESF) annex identifies a coordinating agency, primary or lead agencies, supporting, and assisting agencies. Each ESF annex also lists or describes the disaster preparedness, response, and recovery roles and responsibilities of organizations.

ESF-1 (Transportation; Transportation Infrastructure)

Road Commission for Oakland County
Oakland County Airports
Oakland Schools & Local School Districts
Oakland County Parks & Recreation
Michigan Department of Transportation
SMART
NOTA
WOTA
AMTRAK, CN, CSX, LSRC
Private Sector Charter Bus, School Bus, and other transportation services

ESF-2 (Communications; Supporting Technologies)

Oakland County Information Technologies ((CLEMIS, Radio, GIS)
Oakland County Sheriff's Office – Communications Center
Oakland County Emergency Management Division
Oakland County Building Safety Dispatch
Oakland County Amateur Radio Public Service Corps
Local Public Safety Answering Points (PSAP)
NOAA National Weather Service (NWS)
Michigan Association of Broadcasters (MAB)
Oakland County Outdoor Warning Sirens; IPAWS (EAS, WEA) & OakAlert (CodeRed)

ESF-3 (Public Works)

Road Commission for Oakland County
Oakland County Water Resources Commissioner
Local Public Works / Public Services Departments
Great Lakes Water Authority (GLWA)
MDOT & EGLE
Army Corps of Engineers

ESF-4 (Firefighting)

Local Fire & Rescue Agencies
MABAS Divisions 3201 & 3202
Oakland County International Airport – Aircraft Rescue Fire Fighting (ARFF)

ESF-5 (Emergency Management; Information & Planning)

Oakland County Emergency Management Division
Michigan State Police Emergency Management & Homeland Security Division
Oakland County Executive & Local Public Officials
Local Emergency Management Coordinators / Liaisons
Federal Emergency Management Agency (FEMA)

ESF-6 (Mass Care & Human Services)

Oakland County Emergency Management Division
Oakland County Department of Health & Human Services
American Red Cross
The Salvation Army
United Way 2-1-1
Oakland Livingston Human Service Agency (OLHSA)
Oakland Community Health Network (formerly Oakland County Community Mental Health Authority)
Oakland County Crisis Response Organization (OCCRO)
Volunteer Organizations Active in Disaster (VOAD) such as Southern Baptist Disaster Relief, NECHAMA, Samaritan's Purse
Volunteer Management

ESF-7 (Logistics and Resource Support)

Oakland County Emergency Management Division
Oakland County Purchasing
Oakland County Fiscal Services
Oakland County Facilities Management
Michigan State Police Emergency Management & Homeland Security Division
FEMA
Commodity Points of Distribution (POD), Warehouse Management
Donations Management

ESF-8 (Public Health & Medical Services to include EMS & Fatality Management)

Oakland County Health Division
Oakland County Medical Control Authority
Oakland County Medical Examiner's Office
Local Hospitals & Healthcare Facilities
Local EMS Providers (fire based; private)
Region 2 North Healthcare Coalition
MI-MORT (Michigan Mortuary Operations Response team)
Michigan Department of Health & Human Services
HHS
CDC
DMORT

ESF-9 (Search and Rescue)

Oakland County Technical Rescue Teams
Michigan Urban Search and Rescue Task Force (MI-TF1)
Local Fire & Rescue Agencies
MABAS 3201 & 3202

ESF-10 (Hazardous Materials)

Oakland County HAZMAT Teams
Local Fire & Rescue Agencies
MABAS 3201 & 3202
Oakland County Emergency Management Division
Oakland County Local Emergency Planning Committee (LEPC)
Michigan Department of Environment, Great Lakes, & Energy (EGLE)
U.S. Environmental Protection Agency (EPA)
National Response Team
CN, CSX, and Lake State Railway Corp
Private Sector Environmental Response / Clean-Up Companies such as Youngs Environmental

ESF-11 (Agriculture & Natural Resources)

Oakland County Water Resources Commissioner
Oakland County Health Division – Environmental Health Services
Oakland County Parks & Recreation
MSU Extension – Oakland County
Michigan Department of Agriculture & Rural Development (MDARD)
Michigan Department of Natural Resources (DNR)
U.S. Department of Agriculture (USDA)
Local Public Works – Water / Wastewater Systems
Local Parks & Recreation Departments

ESF-12 (Energy)

Oakland County Emergency Management Division
Oakland County Facilities Management
DTE Energy
Consumers Energy
ITC
Enbridge
Sunoco Logistics
Buckeye Partners
Vector
Michigan Public Service Commission (MPSC)
U.S. Department of Energy (DOE)

ESF-13 (Public Safety & Security; Law Enforcement)

Oakland County Sheriff's Office
Local Police & Public Safety Agencies
Michigan State Police
FBI
U.S. Department of Homeland Security (DHS) – USSS, TSA, CBP
ATF

ESF-14 (Business and Critical Infrastructure)

(the former ESF-14 Recovery has transitioned to RSF Recovery Support Annex)

Oakland County Emergency Management Division
Oakland County Executive
Oakland County Economic Development
18 Critical Infrastructure Sectors
Hospitals
Sports & Entertainment Venues
Large Employers
Michigan Intelligence Operations Center (MIOC)

ESF-15 (Public Information & External Affairs)

Oakland County Public Communications Department
Oakland County Emergency Management Division
Oakland County Health Division
Oakland County Sheriff's Office
Road Commission for Oakland County
Private Sector

ESF-17 (Animal Care)

Oakland County Animal Control
Michigan Human Society
MI-SART (Michigan State Animal Response Team)
Animal Rescue organizations

ESF-18 (Military / Defense Support to Civil Authorities)

Oakland County Emergency Management Division via EOC
MSP Emergency Management & Homeland Security Division via SEOC
Governor – State of Michigan
Michigan National Guard
51st WMD Civil Support Team
DOD

Emergency Support Function (ESF) Assignment Matrix																		
Disaster Function	ESF-1	ESF-2	ESF-3	ESF-4	ESF-5	ESF-6	ESF-7	ESF-8	ESF-9	ESF-10	ESF-11	ESF-12	ESF-13	ESF-14	ESF-15	ESF-16	ESF-17	ESF-18
Americans with Disabilities Act (ADA)	S	S	S	S	P	S	S	S	S	S	S	S	S	S	S		S	S
Animal Welfare/Response						S	S				S				S		P	
Auxiliary Power/Restoration			P		S		S					P			S			S
CBRNE (Terrorism)	S	S	S	P	S	S	S	P	S	P	S	S	P	S	S		S	S
Communications		P			S		S											
Continuity of Government (COG)					P		S											
Continuity of Operations (COOP)	S	S	S	S	P	S	S	S	S	S	S	S	S	S	S		S	S
Civil Unrest			S		S								P					
Critical Incident Stress Management (CISM)					S	P	S	S						S				
Critical Infrastructure Protection	S	S	S		S						S	P	P	P				S
Damage Assessment	S	S	S		P	S	S											
Debris Management	S		P		S			S				S		S				S
Direction and Control					P		S	S										
Donations Management					S	P	S											
Emergency Medical Services (EMS)				S			S	P										
Emergency Operations Center (EOC)	S	S	S	S	P	S	S	S	S	S	S	S	S	S	S		S	S
Environmental Health			S				S	P		S	S							
Evacuation and Re-Entry	S	S	S	S	P	S	S						P		S			S
Firefighting			S	P					S	S		S	S					
Food Supply					S			P			S							
Geographical Information System (GIS)		P			S													
Health and Sanitation			S					P										
Heavy Rescue/Technical Rescue			S	S					P									S
Incident Management	S	S	S	P	P	S	S	S	S	S	S	S	P	S	S		S	S
Information Technology		P			S									S				
Joint Information Center (JIC)					S										P			
Law Enforcement													P					S
Logistics	S	S	S	S	S	S	P	S	S	S	S	S	S	S	S		S	S

P = PRIMARY S = SUPPORTING

Emergency Support Function (ESF) Assignment Matrix																		
Disaster Function	ESF-1	ESF-2	ESF-3	ESF-4	ESF-5	ESF-6	ESF-7	ESF-8	ESF-9	ESF-10	ESF-11	ESF-12	ESF-13	ESF-14	ESF-15	ESF-16	ESF-17	ESF-18
Mass Care and Feeding					S	P		S										
Mass Casualty Incident (MCI)				S	S			P										
Mass Fatality Management/Mortuary Services					S	S		P					S					S
Mental Health						P		S										
Military/Defense Civil Support	S	S	S	S	S		S	S	S				S					P
Mitigation	S	S	S		P			S	S		S	S		S				
Multi-Agency Coordination	S	S	S	S	P	S	S	S	S	S	S	S	S	S	S		S	S
Nuclear Crisis/Nuclear Power Plant Accident	S				P			P		S		P	S		S			S
Pandemic/Public Health Emergency					S	S	S	P						S	S			
Perimeter Security	S		S										P					
Prevention					S								P					
Protective Actions	S	S	S	S	P	S		S		S		S			S			S
Public Information		S			S			S							P			
Public Warning		S			P			S					S		S			
Readiness	S	S	S	S	P	S	S	S	S	S	S	S	S	S	S		S	S
Recovery	S	S	S	S	P	S	S	S	S	S	S	S	S	P	S		S	S
Resource Coordination	S	S	S	S	P	S	P	S	S	S	S	S	S	S	S		S	S
Shelter					S	P		S					S					
Snow Removal	S		P															
Strategic National Stockpile (SNS)					S			P							S			S
Telecommunications		P			S								S					
Temporary Housing					S		P							S				
Traffic Control	S		S										P					
Transportation Routes	P		S										S					
Urban Search and Rescue (USAR)			S	S			S		P									

P = PRIMARY S = SUPPORTING

Emergency Support Function (ESF) Assignment Matrix																		
Disaster Function	ESF- 1	ESF- 2	ESF- 3	ESF- 4	ESF- 5	ESF- 6	ESF- 7	ESF- 8	ESF- 9	ESF-10	ESF-11	ESF-12	ESF-13	ESF-14	ESF-15	ESF-16	ESF-17	ESF-18
Urban Search and Rescue (USAR)			S	S			S		P									
Volunteer Coordination					S	P		S									S	
Waste Disposal			P					S			S							
Water Supply			S					S			P							
Web EOC (MI-CIMS) & OakEOC (DLAN)		S			P													

P = PRIMARY S = SUPPORTING

THIS AREA INTENTIONALLY LEFT BLANK

Information Collection, Analysis, and Dissemination

Information and Planning

The county EOC utilizes the National Incident Management System (NIMS) Incident Support Model. ESF representatives are normally part of Operations Support and Logistics Support within the Resource Support Section.

The EOC primary function is coordinating and supporting the on-scene incident command / unified command and local communities. Another primary function is keeping the county executive and the MAC Policy Group informed on situation status. Whenever collecting, reporting, or disseminating essential information know the source of the information, the key message or request, and a contact person for follow-up.

Technical Specialists and subject matter experts from ESF primary and supporting agencies may also be utilized by the following EOC functions:

- Situation Awareness Section
- Planning Support Section
- Resources Support Section
- Center Support Section
- Public Information Officer (PIO)

Intelligence and Investigation Function

The EOC may utilize Intelligence Analysts and others. On-scene Incident Command / Unified Command should always consider assigning an Intelligence & Investigation officer, unit, group or section depending on the type, size, and duration of the incident.

The EOC may liaison with the MIOC and DSEMIIC (fusion centers).

The EOC shall maintain situational awareness and champion information sharing with stakeholders. Media relations and proving the public with appropriate, timely and accurate information is a must. This process is described in ESF-15.

Communications

Communications radio interoperability and infrastructure utilized by the EOC and local responder agencies are described within ESF-2. Public information systems are described within ESF #15. Warning or alerting systems utilized by the EOC include OakAlert (CodeRed) and IPAWS (EAS, WEA).

Methods for submitting damage and impact assessment data to the SEOC include MI-CIMS and ArcGIS Survey 1-2-3. There are multiple methods for submitting information, resource requests, copies of Incident Action Plans (IAP), photographs, maps, or diagrams. The EOC utilizes OakEOC (DLAN) and MI-CIMS (WebEOC). Back-up forms of communications includes LEIN and Amateur Radio via trained and vetted RACES / ARES members that volunteer to work at the EOC.

EOC Situational Awareness, Information Management, and EOC-IAP Process

SITUATIONAL AWARENESS

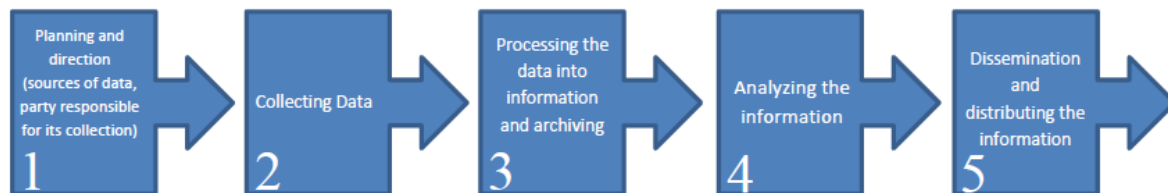
“The ability to identify, process, and comprehend the critical information about an incident. More simply, it is knowing what is going on around you. Situational Awareness requires continuous monitoring of relevant sources of information regarding actual incidents and developing hazards.”

- National Response Framework (NRF), 2nd Edition

COMMON OPERATING PICTURE

- **Information sharing:**
 - Responsibility of all personnel
 - Communication systems that support information sharing
- **To maintain situational awareness, personnel update information continually by:**
 - Gathering, collecting, synthesizing, & disseminating information from all appropriate parties

Information Management Process



FIVE MAJOR PHASES IN THE EOC PLANNING PROCESS

1. Understand situation (initial briefing)
2. Establish incident objectives & Strategy:
 - Objectives meeting
 - Strategies meeting
3. Develop plan (planning meeting)
4. Prepare & disseminate plan (operations briefing)
5. Execute, evaluate, & revise plan (revise & evaluate)

ESTABLISHING EOC PRIORITIES, OBJECTIVES, AND STRATEGIES

SMART objectives

- S: Specific
- M: Measurable
- A: Action-oriented
- R: Realistic
- T: Time-sensitive

Example:

Maintain shelter operations at the YMCA for 1,200 citizens for 72 hours.

Administration, Finance, and Logistics

The EOC utilizes Oakland County Fiscal Services and Oakland County Purchasing to support operations during activation. Logistics and Resource Support is further described within ESF-7 and ESF-5.

All resource requests from local incident command, via the IMT, or local officials are documented. The primary form of documentation is via a “ticket” in OakEOC. A secondary form is via ICS form 213 RR or an equivalent formal message document that allows for assigning it to a position or person and replying with a status.

Oakland County Emergency Management maintains a resource warehouse with PPE and other equipment or supplies that may support response and recovery operations. A limited amount of special equipment (such as cots and wheelchairs) is maintained.

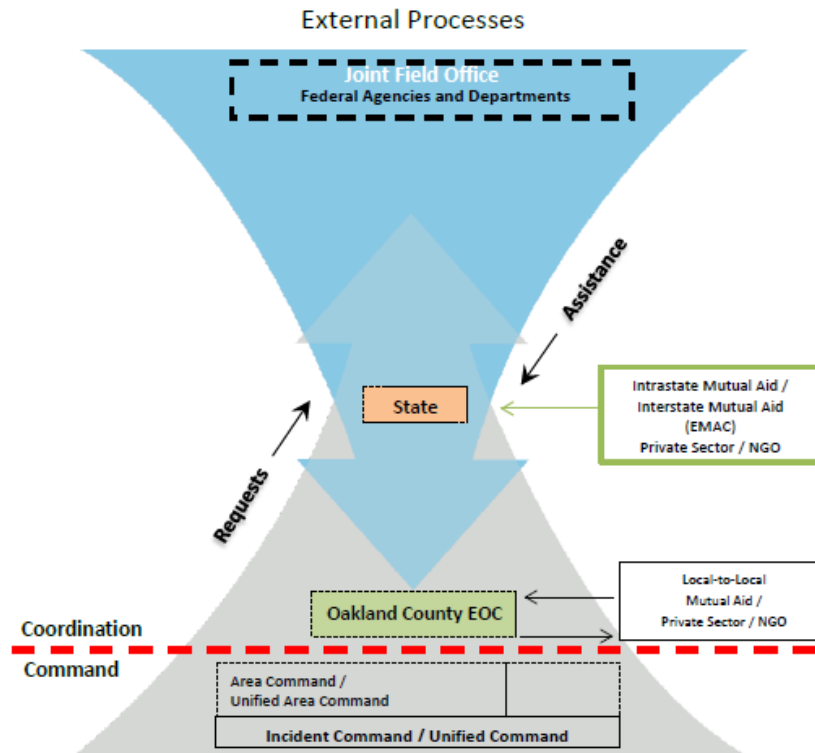
All purchases, expenses and labor costs that may involve applying for reimbursement via FEMA Public Assistance (PA), grants, or Michigan Public Act 390 Section 19, must be documented. It should be expected that all funds approved by FEMA to the county or local jurisdictions is a cost share, typically 75% / 25%. The primary reference document for this process is FEMA Public Assistance Program and Policy Guide (PAPPG), Version 4 (June 2020).

PA categories and requirements (such as Category A: Debris Removal or Category B: Emergency Protective Measures) are described in ESF-5, ESF-7, and support annexes.

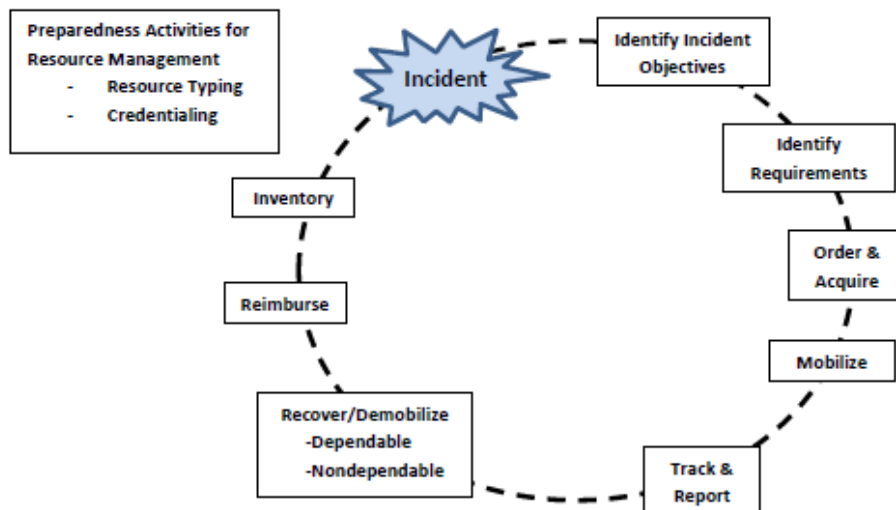
The Oakland County EOC shall also coordinate with local, county, state, and federal officials to assist the community when Individual Assistance (IA) is requested / awarded.

Flow of Requests and Assistance during Disasters

Flow of Requests and Assistance during Large-Scale Incidents



Internal Processes



Training and Exercises

Training Offered and Hosted

Oakland County Emergency Management professional staff often provide training to local and regional responders and partners. Several EM staff are FEMA trained and State-recognized ICS instructors. Several EM staff have also attended Train-the-Trainer courses on other subjects.

We conduct several ICS-300 and ICS-400 level classroom courses each year supporting our commitment to continually implementing the National Incident Management System (NIMS).

Oakland County also hosts many federally-sponsored training courses via the following:

- National Emergency Response & Recovery Training Center – TEEX
- National Domestic Preparedness Training Center (NDPTC) – University of Hawaii
- Center of Domestic Preparedness (CDP) – Anniston, AL
- NCBRT / ACE – LSU

Oakland County has participated in three (3) FEMA Integrated Emergency Management Courses (IEMC) (hosted at Emmitsburg, MD FEMA Training Site).

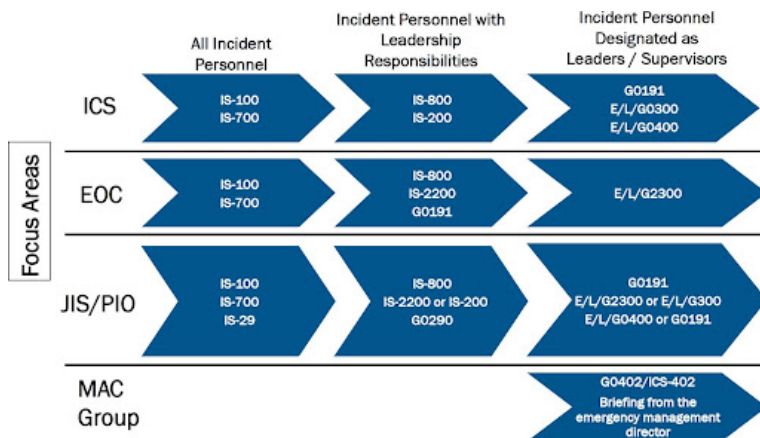
Oakland County EM has promoted and assisted with local Community Emergency Response Team (CERT) training for over 15 years.

X. EOC Staff Credentialling Training

NIMS Training and Other Skill Training

All EOC command and general staff positions (EOC Manager, ISM model Section Chiefs and other key positions) as well as others working in the EOC representing ESFs or partners must complete certain levels of NIMS and ICS training. Most courses are offered by FEMA on-line via the EMI Independent Study Program. Some are required to complete more advanced ICS courses and other skill development courses.

NIMS Training Guidance



Oakland County EOC Manager, EOC Incident Support Model Section Chiefs or Deputies, and designated ESF representatives (such as Health, Fire-Rescue, Law) shall complete the following courses:

ICS-100 (IS-100.C or equivalent within past 5 years)

ICS-200 (IS-200.C or equivalent within past 5 years)

ICS-700.B NIMS Introduction

ICS-800.D NRF Introduction

ICS-300

ICS-400

IS-2200 Basic EOC Functions

IS-247.B IPAWS for Alert Originators

E/L/G 2300 Intermediate EOC Functions or MGT-346 EOC Operations & Planning for All-Hazards

MI-CIMS and OakEOC training

County EOC and IMT Public Information Officers shall complete the above listed training as well as the following:

IS-29.A PIO Awareness

E/L/G 290 Basic Public Information Officer

XI. Homeland Security Exercise & Evaluation Program (HSEEP)

Oakland County Emergency Management professional staff, to include the EMPG-funded member and designated Emergency Management Coordinator (EMC), conduct or participate in at least three (3) exercises each fiscal year. The exercises are reported to the State in each quarterly report and an annual report.

Oakland County Emergency Management has a proactive exercise program. Exercises are conducted with EOC and ESF representatives, local first responders and specialty teams, and for specific disaster functions. Exercises are scenario-based and objective-based and focus on core capabilities. NIMS and multi-agency coordination is injected into exercises.

We follow **Homeland Security Exercise & Evaluation Program (HSEEP)** guidance. The following type exercises are planned and conducted:

- Workshops and Seminars
- Tabletop Exercises (discussion-based)
- Drills or Games (operations-based)
- Functional Exercises (operations-based)
- Full-Scale Exercises (operations-based)

An **After-Action Report / Improvement Plan (AAR / IP)** is developed following each exercise. It is disseminated to participating agencies and organizations and is submitted to the State. Oakland County participants in Multi-Year Exercise Planning.

Plan Development and Maintenance

Oakland County Emergency Management updates the EOP to ensure compliance with State requirements and the County Executive approves and implements the EOP every four (4) years. The ESF coordinating agencies are signatories to the EOP and their respective annex. They provide the EOC with a line of succession / primary and alternate contacts.

A Record of Changes made to the EOP during the four (4) years is maintained on file at the OCEM office.

Electronic copies of the EOP are made available to all local officials via OakEOC. Copies of the EOP is also made available to all local officials, responder agencies, and stakeholders via USB flash drive. Hardcopies of the comprehensive EOP are available in the EOC.

A Record of EOP distribution is maintained on file at the OCEM office.

Authorities and References

Federal

- The Robert T. Stafford Disaster Relief and Emergency Assistance Act, Public Law 93-288 (1974), as amended and codified, replaced the Federal Civil Defense Act of 1950.
- The Post Katrina Emergency Management Reform Act (PKEMRA) of 2006, which amended the Homeland Security Act of 2002, Public Law 107-296, and the Department of Homeland Security / FEMA Appropriations Act of 2007, Public Law 109-295
- Pets Evacuation and Transportation Standards (PETS) Act of 2006
- Emergency Services and Assistance, Code of Federal Regulations (CFR), Title 44
- The Americans with Disabilities Act (ADA) of 1990, Public Law 101-336 and codified
- Homeland Security Presidential Directive (HSPD) 5, Management of Domestic Incidents
- Presidential Policy Directive (PPD) 8, National Preparedness Goal
- National Response Framework (NRF), fourth edition (2019)
- National Incident Management System (NIMS), third edition (2017)
- NFPA 1660 (2020), National Fire Protection Association Standard on Community Risk Assessment, Pre-Incident Planning, Mass Evacuation, Sheltering, and Re-Entry. Combines the former NFPA 1600 and other standards.
- NFPA 3000 (2021), National Fire Protection Association Standard on Active Shooter / Hostile Event Response

State

- Michigan Emergency Management Act, Public Act 390 of 1976, as amended
- Michigan Emergency Management Plan (MEMP)

Local:

- Oakland County Board of Commissioners Resolutions #91293 (1991) and subsequent resolutions creating the department and position responsible for emergency management.
- Annual Emergency Management Performance Grant (EMPG) agreement

This Page Intentionally Blank

Appendix A: ACRONYMS

AAA	Area Agency on Aging (NGO; Senior Citizens)
AAR	After-Action Report; After-Action Review; AAR/IP – Improvement Plan
AC	Area Command (UAC; ICS; NIMS)
ACAMS	Automated Critical Asset Management System
ACC	Alternate or Acute Care Center (Public health and medical)
ACC	Arab American Chaldean Council (Metro Detroit)
ACE	U.S. Army Corps of Engineers (USACE)
ACP	Access Control Point (Established perimeter; evacuated area; cold zone – warm zone)
ACSDR	Adventist Community Services Disaster Response (Seventh Day Adventist; VOAD)
ADA	Americans with Disabilities Act
AEL	Authorized Equipment List (DHS / FEMA grant guidance related)
AEP	Airport Emergency Plan (FAA; OCIA)
AFN	Access & Functional Needs (PWD – People with Disabilities) (formerly special needs)
AG	Adjutant General (National Guard); Attorney General
AHIMT	All-Hazards Incident Management Team (IMT)
AHJ	Agency Having Jurisdiction
ALARA	As Low As Reasonably Achievable (Radiological)
ALOHA	Aerial Locations Of Hazardous Atmospheres (HAZMAT)
ALS	Advanced Life Support (EMS)
ANFO	Ammonium Nitrate and Fuel Oil (CBRNE; bomb materials)
ANGB	Air National Guard Base (i.e. Selfridge)

APCO	Association of Public Safety Communications
APHIS	Animal and Plant Health Inspection Service (USDA)
APWA	American Public Works Association
ARC	American Red Cross
ARES	Amateur Radio Emergency Services (ARRL; ARPSC)
ARFF	Aircraft Rescue Fire Fighting (Airport Crash Rescue / Firefighting)
ARPSC	Amateur Radio Public Service Corp (RACES; ARES; ARRL)
ARRL	Amateur Radio Relay League (ARES; ARPSC)
ASAP	As Soon As Possible
ASCE	American Society of Civil Engineers
ASIS	American Society of Industrial Security (CPP; CIKR)
ASL	American Sign Language
ASPR	Assistant Secretary for Preparedness & Response (HHS)
ATAC	Anti-Terrorism Advisory Committee (USDOJ; U.S. Attorney)
ATCT	Air Traffic Control Tower (FAA)
ATF	Bureau of Alcohol, Tobacco, Firearms & Explosives (USDOJ; BATF)
AT / FP	Anti-Terrorism / Force Protection (Military; program and office)
ATSDR	Agency for Toxic Substances and Disease Registry (HHS; USPHS)
AWWA	American Water Works Association
BCP	Business Continuity Plan (BCDR; COOP)
BDS	Biohazard Detection System (USPS)
BERT	Business / Building Emergency Response Team (CERT)
BLS	Basic Life Support (EMS)

BIO	Biological (Bio-Watch; Bio-Shield; Bio-Terrorism)
BLEVE	Boiling Liquid Expanding Vapor Explosion
BSIR	Biannual Strategy Implementation Reports (HSGP; UASI; grants)
BT	Bio-Terrorism (BW)
BW	Biological Weapon (WMD; CBRNE)
BZPP	Buffer Zone Protection Plan / Program (CIKR)
CAD	Computer-Aided Dispatch
CAP	Civil Air Patrol
CAMEO	Computer-Aided Management of Emergency Operations (HAZMAT; MARPLOT)
CARVER	Criticality – Accessibility – Recuperability – Vulnerability – Effect – Recognizability + Shock (HVA or security assessment methodology)
CBIRF	Chemical – Biological Incident Response Force (USMC)
CBP	Customs and Border Protection (DHS)
CBRN	Chemical – Biological – Radiological – Nuclear (WMD; CBRNE)
CBRNE	Chemical – Biological – Radiological – Nuclear – Explosives (WMD)
CCP	Casualty Collection Point; Citizen Corps Program
CCTV	Closed Circuit Television (Camera surveillance / recording system)
C&D	Construction & Demolition (debris)
CDC	Centers for Disease Control & Prevention
CEO	Chief Executive Official; Chief Elected Official
CERC	Crisis and Emergency Risk Communication (Public health; PIO)
CERT	Community Emergency Response Team (Citizen Corps)
CFR	Code of Federal Regulations

CHECC	Community Health Emergency Coordination Center (MDCH)
CHEMTREC	Chemical Transportation Emergency Center (HAZMAT)
CIKR	Critical Infrastructure and Key Resources (NIPP)
CIP	Critical Infrastructure Protection (CIKR; NIPP)
CISD	Critical Incident Stress Debriefing (CISM)
CISM	Critical Incident Stress Management (CISD)
CLEMIS	Courts & Law Enforcement Management Information System (Oakland County IT)
CMS	Center Management System (NIMS; EOC)
CMS	Centers for Medicare & Medicaid Services (HHS)
CN	Canadian National railroad company (formerly Grand Trunk Western in Michigan)
COG	Continuity of Government
COG	Collaborating Operational Group (IPAWS approved alerting authority)
COML	Communications Unit Leader (ICS; IMT; CST)
CONOPS	Concept of Operations; also CONPLAN – Concept of Operations Plan; Contingency Plan
COOP	Continuity of Operations
COP	Common Operating Picture
COW	Cellular On Wheels
CREST	Combined Regional Emergency Services Training (Center at Oakland Community College Auburn Hills campus)
CRI	Cities Readiness Initiative (Public health)
CS / CN / OC	Tear Gas (riot control agent; dispersal canister or aerosolized fogger); Pepper Spray
CST	Civil Support Team (i.e. Michigan National Guard 51 st WMD CST)
CST	Communications Support Team (Oakland County IMT / MABAS; Troy FD)

CTC	Counter-Terrorism Center
CTO	Communications Training Officer (FTO for public safety communicators)
CW	Chemical Weapon (WMD; CBRNE)
DA	Damage Assessment
DART	Disaster Assistance Recovery Team (MI-DART; MI-MORT)
DC	District Coordinator (MSP / EMHSD; State emergency management)
DCO	Defense Coordinating Officer (DOD; Military; JFO)
DEA	Drug Enforcement Agency (USDOJ)
DEC	Deputy Emergency Coordinator (ARPSC; RACES; ARES)
DECON	Decontamination (HAZMAT; CBRN)
DEMOB	Demobilization (ICS; NIMS; process); DMOB (DEMOB Unit Leader)
DEQ	Michigan Department of Environmental Quality (MDEQ)
DFCO	Deputy Federal Coordinating Official (FCO, PFO, JFO, FEMA)
DFO	Disaster Field Office (FEMA; obsolete, see JFO & DRC, and on-line registration process)
DHHS	Oakland County Department of Health & Human Services
DHS	U.S. Department of Homeland Security
DHS	Michigan Department of Human Services
DM / DPM	Debris Manager / Debris Project Manager (DMS; EOC)
DMAT	Disaster Medical Assistance Team (HHS; FEMA; MI-1 DMAT)
DMORT	Disaster Mortuary Operational Response Team (HHS; FEMA, NTSB; MI-MORT)
DMS	Debris Management Site
DMS	Dynamic Message Sign (SEMTOC; MDOT; RCOC; Traffic Management)
DNDO	Defense Nuclear Detection Office (DOD)

DNR	Department of Natural Resources (Michigan)
DOC	Departmental Operations Center (Single agency EOC)
DOD	U.S. Department of Defense (Military)
DOE	U.S. Department of Energy
DOJ	U.S. Department of Justice (USDOJ)
DOT	U.S. Department of Transportation (USDOT)
DPETAP	Domestic Preparedness Equipment Technical Assistance Program
DPS	Department of Public Safety (Combination PD / FD; local)
DPS	Department of Public Services (DPW; local)
DPW	Department of Public Works (DPS; local)
DRC	Disaster Recovery Center (FEMA / State)
DS	Dispensing Site (Public health; POD for medication; also Dispensing Node)
DSCA	Defense Support to Civil Authorities (Military)
DSCO	Deputy State Coordinating Officer (Disaster)
DSEMIIC	Detroit & Southeast Michigan Information and Intelligence Center (MIOC; Fusion Node)
DTRA	Defense Threat Reduction Agency (DOD; WMD)
EAG	Emergency Action Guideline
EAP	Emergency Action Plan
EAS	Emergency Alert System (IPAWS; WEA; EMNet; LP-1)
EC	Emergency Coordinator (RACES; ARPSC; ARES; ARRL)
ECC	Emergency Communications Center; Emergency Coordination Center
ED	Emergency Department (ER; Hospital)
EDS	Emergency Disaster Services (The Salvation Army; VOAD)

EEG	Exercise Evaluation Guide (HSEEP; Target – Core Capabilities)
EHP	Environmental & Historical Preservation (Planning; Grants program)
ELT	Emergency Location Transmitter (Aviation; CAP; SAR)
EM	Emergency Management (Discipline; function); Emergency Manager (EMC)
EMA	Emergency Management Agency
EMAC	Emergency Management Assistance Compact (State-to-State)
EMAP	Emergency Management Accreditation Program
EMC	Emergency Management Coordinator
EMHSD	Emergency Management & Homeland Security Division (Michigan State Police)
EMI	Emergency Management Institute (FEMA)
EMP	Electromagnetic Pulse
EMPG	Emergency Management Performance Grant
EMS	Emergency Medical Services
EMT	Emergency Medical Technician (EMS)
EOC	Emergency Operations Center (MACS)
EOD	Explosive Ordinance Disposal (Military; bomb squad)
EOP	Emergency Operations Plan
EPCRA	Emergency Planning and Community Right-to-Know Act (HAZMAT; SARA; LEPC)
EPA	U.S. Environmental Protection Agency
EPZ	Emergency Planning Zone (NRC; Fermi II Nuclear Power Plant)
ERFOG	Emergency Response Field Operations Guide
ERG	Emergency Response Guide (USDOT; HAZMAT)
ERT	Emergency Response Team (HAZMAT; WMD)

ERT	Evidence Response Team (FBI)
ESF	Emergency Support Function (EOP)
ETA	Estimated Time of Arrival
EXPLAN	Exercise Plan (HSEEP)
FAA	Federal Aviation Administration
FAC	Family Assistance Center
FAMS	Federal Air Marshal Service
FAR	Federal Aviation Regulation
FAX	Facsimile
FBI	Federal Bureau of Investigation (USDOJ; JTTF)
FBO	Fixed Base Operator (General Aviation; OCIA)
FCC	Federal Communications Commission
FCO	Federal Coordinating Officer (FEMA; JFO; disaster)
FD	Fire Department
FDA	Food and Drug Administration
FDIC	Federal Deposit Insurance Corporation
FEMA	Federal Emergency Management Agency
FE or FX	Functional Exercise (HSEEP)
FHWA	Federal Highway Administration
FIG	Field Intelligence Group (FBI)
FM&O	Oakland County Facilities Maintenance and Operations
FNSS	Functional Needs Support Services
FOIA	Freedom of Information Act

FOUO	For Official Use Only
FRA	Federal Railroad Administration
FRERP	Federal Radiological Emergency Response Plan
FRP	Federal Response Plan (became NRP, now National Response Framework)
FSE	Full-Scale Exercise (HSEEP; large scenario-based exercise with multiple agencies and functions in field as well as ICP and EOC)
FSIS	Food Safety and Inspection Service (USDA)
FTO	Field Training Officer
FTX	Field Training Exercise (Drill or Full-Scale Exercise testing or demonstrating proficiency based on tasks and objectives)
GA	General Aviation (Private, Freight, Flight Schools, Corporate or Executive)
GAC	Grant Allocation Committee (Oakland County; LPT)
GAR	Governor's Authorized Representative (SEOC)
GETS	Government Emergency Telecommunications Service (DHS Wireless Priority Service)
GIS	Geographic / Geospatial Information System
GLWA	Great Lakes Water Authority (formerly DWSD)
GPS	Global Positioning System
GSA	Government Services Administration (Federal)
HAZMAT	Hazardous Materials
HAZWOPER	Hazardous Waste Operation and Emergency Response
HCA	High Consequence Area
HEAR	Hospital Emergency Administrative Radio
HEMS	Health Emergency Medical Services (Wayne County MCA)
HHS	U.S. Department of Health and Human Services

HHW	Household Waste
HICS	Hospital Incident Command System (HEICS; NIMS)
HIPAA	Health Insurance Portability and Accountability Act
HME	Homemade Explosives
HMP	Hazard Mitigation Plan
HMGP	Hazard Mitigation Grant Program
HMRT	Hazardous Materials Response Team (HAZMAT)
HRSA	Health Resources and Services Administration (HHS)
HSEEP	Homeland Security Exercise & Evaluation Program
HSGP	Homeland Security Grant Program
HSIN	Homeland Security Information Network (Fusion Center; information sharing)
HSUS	Human Society of United States (Michigan Human Society)
HUD	Housing & Urban Development (Federal)
HVA	Hazard Vulnerability Assessment
HVAC	Heat, Ventilating & Air Conditioning (system; infrastructure)
IA	Hazard-Specific Incident Annex (Oakland County EOP)
IA	Individual and Family Assistance (Robert T. Stafford Disaster Relief Act)
IAEM	International Association of Emergency Managers
IAFF	International Association of Fire Fighters
IAP	Incident Action Plan
IAW	In Accordance With
IC	Incident Commander
ICC	Incident Command Center (ECC; often within hospital or private CIKR)

ICE	Immigration & Customs Enforcement (DHS; formerly INS)
ICP	Incident Command Post (on-scene; ICS; NIMS)
ICS	Incident Command System (NIMS; Unified Command)
IDLH	Immediately Dangerous to Life or Health (HAZMAT; public health)
IED	Improvised Explosive Device (Bomb)
IEMC	Integrated Emergency Management Course (FEMA; EMI)
IMT	Incident Management Team (AHIMT; OCIMT; ICS)
IND	Improvised Nuclear Device
IP	Improvement Plan (HSEEP; AAR)
IPAWS	Integrated Public Alert & Warning System (EAS; WEA; NOAA; EMNet)
IPZ	Ingestion Pathway Zone (also secondary EPZ; NRC; Fermi II Nuclear Power Plant)
IRIS	Immediate Response Information System (Oakland County)
ISD	Intermediate School District (Oakland Schools)
ITC	International Transmission Company (Electrical power CIKR; HQ in Novi)
ITS	Intelligent Transportation System (SEMTOC; RCOC TOC; DMS & freeway camera system; Traffic Management)
JAG / JAS	Job Action Guide or Sheet (checklist for a specific position or tasking)
JCAHO	Joint Commission on Accreditation of Healthcare Organizations; also JCAH (Hospitals); now just referred to as Joint Commission
JCC	Jewish Community Center (Metro Detroit)
JFHQ	Joint Forces Headquarters (Military)
JFO	Joint Field Office (DHS; FEMA; Disaster)
JHAT	Joint Hazard Assessment Team (CBRNE)
JIC	Joint Information Center (PIO; NIMS; JIS; formerly JPIC)

JIS	Joint Information System (PIO; NIMS; JIC)
JOC	Joint Operations Center (FBI; Terrorism)
JTF	Joint Task Force (Military)
JTTF	Joint Terrorism Task Force
LAT / LONG	Latitude / Longitude points (GEO; GIS)
LEA	Law Enforcement Agency
LEIN	Law Enforcement Information Network (Michigan)
LEO	Law Enforcement Officer; Law Enforcement On-Line
LEPC	Local Emergency Planning Committee (HAZMAT; SARA)
LETTP	Law Enforcement Terrorism Prevention Program (HSGP; UASI)
LGBT	Lesbian, Gay, Bisexual & Transgender
LOFR	Liaison Officer (ICS; IMT)
LP-1 / LP-2	Local Primary 1 – WJR 760 AM, 2 – WWJ 950 AM (EAS)
LPT	Local Planning Team (GAC; UASI)
LSC	Logistics Section Chief (ICS; IMT)
LSS	Lutheran Social Services – Disaster Services (VOAD)
LTC	Long Term Care (Facility)
MAA	Mutual Aid Agreement
MABAS	Mutual Aid Box Alarm System (MABAS-MI)
MAB	Michigan Association of Broadcasters
MACC	Multi-Agency Coordination Center (MACS; NIMS; EOC)
MACS	Multi-Agency Coordination System (MACC; NIMS; JFO; EOC; DOC; ICP; Dispatch Center)
MALPH	Michigan Association of Local Public Health

MANPADS	Man Portable Air Defense System (shoulder-fired rocket)
MACP	Michigan Association of Chiefs of Police
MAFC	Michigan Association of Fire Chiefs
MARC	Multi-Agency Resource Center
MARPLOT	Mapping Applications for Response, Planning, and Local Operational Tasks (CAMEO)
MARS	Military Affiliated Radio System
MCA	Medical Control Authority (OCMCA)
MCI	Multiple / Mass Casualty Incident
MDARD	Michigan Department of Agriculture & Rural Development
MDEQ	Michigan Department of Environmental Quality (DEQ)
MDHHS	Michigan Department of Health & Human Services (formerly MDCH)
MDNR	Michigan Department of Natural Resources (DNR)
MDOT	Michigan Department of Transportation
ME / MEO	Medical Examiner; Medical Examiner's Office
MEDDRUN	Michigan Emergency Drug Delivery Resource Utilization Network (OPHP; CHEMPACK)
MEMA	Michigan Emergency Management Association
MEMAC	Michigan Emergency Management Assistance Compact (within State)
MEMP	Michigan Emergency Management Plan (Comprehensive State EOP)
MFF	Mobile Field Force (Civil Unrest; crowd control)
MFI	Multiple / Mass Fatality Incident
MI-MORT	Michigan Mortuary Operations Response Team (MDCH; DMORT)
MING	Michigan National Guard
MIOC	Michigan Intelligence Operations Center (Fusion Center)

MIOSHA	Michigan – Occupational Safety & Health Administration
MI-SART	Michigan – State Animal Response Team
MMRS	Metropolitan Medical Response System (HHS; regional)
MOA	Memorandum of Agreement
MOU	Memorandum of Understanding
MOW	Meals-On-Wheels
MRC	Medical Reserve Corps (Citizen Corps)
MRE	Meal, Ready-to-Eat
MSDS	Material Safety Data Sheet (information concerning chemicals or potentials hazardous substances at a specific workplace)
MSEL	Master Scenario Event List (HSEEP)
MSP	Michigan State Police (EMHSD)
MUSAR	Michigan Urban Search and Rescue (USAR; now State sponsored MI-TF1)
NACCHO	National Association of City & County Health Organizations
NACo	National Association of Counties
NAWAS	National Warning & Alert System
NBC	Nuclear – Biological – Chemical (former military term for CBRN)
NCIC	National Crime Information Center (LEIN)
NDMS	National Disaster Medical System (HHS; FEMA; DMAT)
NDPC	National Domestic Preparedness Consortium (training)
NDRF	National Disaster Response Framework (Federal; companion to NRF)
NEMA	National Emergency Management Association
NERRTC	National Emergency Response & Rescue Training Center (TEEX; Texas A&M)

NEXS	National Exercise Schedule (HSEEP)
NFA	National Fire Academy
NFIP	National Flood Insurance Program
NFPA	National Fire Protection Association
NGO	Non-Government Organization
NIC	NIMS Integration Center
NIMS	National Incident Management System (ICS; MACS)
NIPP	National Infrastructure Protection Plan (CIP; CIKR)
NOAA	National Oceanic & Atmospheric Administration (NWS)
NOC	National Operations Center (DHS; FEMA)
NORTHCOM	U.S. Northern Command (Military; North American)
NPG	National Preparedness Goal (Federal; Core Capabilities; Whole Community doctrine); also National Preparedness Guidelines
NPS	National Planning Scenarios
NRF	National Response Framework (Federal)
NRT	National Response Team (HAZMAT; EPA)
NSSE	National Special Security Event
NTSB	National Transportation Safety Board (USDOT)
NWR	NOAA All-Hazards Weather Radio (NWS; SAME; EAS; IPAWS)
NWS	National Weather Service (NOAA)
OBP	Office of Bombing Prevention (DHS)
OCC	Oakland Community College
OCCRO	Oakland County Crisis Response Organization (CISM)

OCCMHA	Oakland County Community Mental Health Authority (now OCHN)
OCHD	Oakland County Health Division (Local Health Department)
OCHN	Oakland Community Health Network (formerly OCCMHA)
OCHSD	Oakland County Homeland Security Division (Local Emergency Management)
OCIA	Oakland County International Airport
OCMCA	Oakland County Medical Control Authority
OCSO	Oakland County Sheriff's Office
OJT	On-the-Job Training (FTO; Just-in-time training)
OLHSA	Oakland Livingston Human Service Agency
OPHP	Office of Public Health Preparedness (MDCH; Region 2 North Healthcare Coalition)
OSC	On-Scene Coordinator (EPA); Operations Section Chief (ICS; NIMS)
OPSEC	Operational Security
OSHA	Occupational Safety & Health Administration
OU	Oakland University
PA	Public Assistance (Robert T. Stafford Disaster Relief Act)
PAC	Public Assistance Coordinator (SEOC; EOC)
PAGP	Public Assistance Grant Program (PA; FEMA)
PAG / PAR	Protective Action Guide / Protective Action Recommendation
PAO	Public Affairs Officer (Military; PIO)
PAPR	Powered Air Purifying Respirator (PPE)
PAR	Personnel Accountability Report
PCII	Protected Critical Infrastructure Information (DHS; program)
PDA	Preliminary Damage Assessment

PDA	Presbyterian Disaster Assistance (VOAD)
PETS	Pets Evacuation & Transportation Standards (Act)
PHMSA	Pipeline and Hazardous Materials Safety Administration (USDOT)
PHOC	Public Health Operations Center (MACS; EOC or DOC for public health)
PIO	Public Information Officer (ICS; NIMS; JIS; JIC; CERC)
PKEMRA	Post Katrina Emergency Management Reform Act
PNP	Private Non-Profit
POD	Point of Distribution (EM, food, water, ice, disaster cleanup supplies distribution effort or assistance center; separate or part of a donations management operation)
POD	Point of Dispensing (Public health; mass prophylaxis; mass vaccination or medication dispensing site / node)
PPE	Personal Protective Equipment
PFO	Principal Federal Official (DHS; FEMA; JFO; Major Disaster or Significant Event)
PSA	Protective Security Advisor (DHS; CIKR; CIP)
PSAP	Public Safety Answering Point (9-1-1 receiving / dispatch center)
PSC	Planning Section Chief (ICS; NIMS; IMT)
QRF	Quick Reaction Force (Military)
RACES	Radio Amateur Civil Emergency Service (ARPSC; ARES; ARRL)
RADEF	Radiological Defense
RAM	Risk Assessment Model (form of HVA)
RAP	Radiological Assistance Program (RAP Team; Federal)
RCOC	Road Commission for Oakland County
RDD	Radiological Dispersal Device (WMD; CBRNE; IED)
REM	roentgen equivalent man (unit of measurement)(Radiological)

REMM	Radiological Emergency Medical Management
REP	Radiological Emergency Preparedness
RESL	Resources Unit Leader (ICS; IMT; Planning Section; Staging Area Manager)
RFID	Radio Frequency Identification
RIC	Rapid Intervention Crew (RIT; HAZMAT; USAR; Fire)
RIT	Rapid Intervention Team (RIC; HAZMAT; USAR; Fire)
REAC / TS	Radiological Emergency Assistance Center / Training Site (DOE)
RFP	Request for Proposal (Purchasing Bid)
RRCC	Regional Response Coordination Center (DHS; FEMA; JFO; Region V Chicago)
RRRASOC	Resource Recovery & Recycling Authority of Southwest Oakland County
RRT	Regional Response Team (HWMD; HAZMAT; Michigan RRT Network); Radiological Response Team (Oakland County; public health)
RSP / RS	Render Safe Procedures / Rendered Safe (CBRNE; bomb)
RSS	Receiving – Storage – Staging (SNS; CRI)
SA	Support Annex (Oakland County EOP)
SAA	State Administrative Agency (Emergency Management; grants)
SABT	Special Agent Bomb Technician (FBI; WMD)
SAME	Specific Area Message Encoder (NOAA; NWS; NWR; EAS; IPAWS)
SAR	Search and Rescue (USAR; Wide-Area Search)
SARA	Superfunds Amendment and Reauthorization Act, Title III (EPA; HAZMAT; LEPC)
SATCOM	Satellite Communications; SAT (phone)
SBA	Small Business Administration (Federal)
SBC / BSCM	Southern Baptist Convention / Baptist State Convention of Michigan – Disaster Relief (VOAD)

SCADA	Supervisory Control and Data Acquisition (system)
SCBA	Self-Contained Breathing Apparatus (PPE; HAZMAT)
SEL	Standardized Equipment List (HSGP; UASI; grants)
SEMHA	Southeastern Michigan Health Association
SEMTOC	Southeast Michigan Traffic Operations Center (MDOT; ITS; Detroit)
SEOC	State Emergency Operations Center
SIP	Shelter-In-Place
SITL	Situation Unit Leader (ICS; NIMS; IMT; EOC)
SITMAN	Situation Manual (HSEEP; TTX)
SITREP	Situation Report (Status Update)
SLATT	State & Local Anti-Terrorism Training (Federal; program)
SLUDGEM	Salivation, Lacrimation, Urination, Defecation, Gastric Distress, Emesis & Miosis (CBRNE; Chemical; nerve agent symptoms)
SNS	Strategic National Stockpile (CDC; CRI; Push Packages, CHEMPACK)
SOCWA	Southeast Oakland County Water Authority (water system for multiple communities to include Royal Oak, Berkley & Southfield)
SOCRRA	Southeast Oakland County Resource Recovery Authority (Community Partners in Recycling and Waste Management)
SOG	Standard Operating Guidelines
SOP	Standard Operating Procedures
SPW	Shelter-In-Place Warning (IPAWS; EAS; SAME; SIP)
SRT	Special Response Team
SST	Small Squad Tactics (MFF; SRT)
STAM	Staging Area Manager (ICS; NIMS)

SVA	Security Vulnerability Assessment
START	Simple Triage and Rapid Treatment (Triage; MCI)
SWAT	Special Weapons and Tactics (unit; team)
TATP	Tri-acetone Tri-peroxide (IED; HME bomb materials)
TCP	Traffic Control Point
TDD / TTY	Telecommunications or Teletype Device for the Deaf
TDMS	Temporary Debris Management Site (DMS; TDSS)
TDSS / TDSR	Temporary Debris Storage & Reduction Site
TEEX	Texas Engineering Extension Service (NERRTC; Texas A&M University)
TEMS	Tactical Emergency Medical Specialist (EMS; SWAT)
TEPW	Training & Exercise Planning Workshop
TF	Task Force
THIRA	Threat & Hazard Identification and Risk Assessment
TICP	Tactical Interoperability Communications Plan
TIH	Toxic Inhalation Hazard (HAZMAT)
TNT	Tri- nitro-toluene (Bomb material)
TransCAER	Transportation Community Awareness Emergency Response (CN, CSX)
TSA	Transportation Security Administration (DHS)
TSA	The Salvation Army (EDS; VOAD)
TSC	Terrorist Screening Center (National CTC; Watch List & Handling Codes)
TTT	Train-the-Trainer
TTX	Tabletop Exercise
UASI	Urban Area Security Initiative

UAV	Unmanned Aerial Vehicle (drone)
UC	Unified Command (ICS; NIMS; MACS; UAC – United Area Command)
USACE	U.S. Army Corps of Engineers
USAR	Urban Search and Rescue (SAR; US&R; Technical Rescue; Building Collapse Rescue)
USCG	U.S. Coast Guard (DHS; Military)
USDA	U.S. Department of Agriculture
USFA	U.S. Fire Administration (FEMA; NFA)
USPHS	U.S. Public Health Service (Commissioned Corps; HHS; NDMS)
USPIS	U.S. Postal Inspection Service (USPS; Federal agents)
USPS	United States Postal Service
USSS	United States Secret Service
VIPER	Visible Intermodal Prevention & Response Team (DHS; TSA)
VMAT	Veterinary Medical Assistance Team (HHS; MI-SART)
VOAD	Volunteer Organizations Active in Disaster
WARN	Water / Wastewater Agency Response Network (MI-WARN – Michigan)
WEA	Wireless Emergency Alert (IPAWS, EAS)
WHO	World Health Organization
WRC	Oakland County Water Resources Commissioner (former Drain Commissioner)
WMD	Weapon of Mass Destruction (CBRNE)
WWTP	Waste Water Treatment Plant

This Page Intentionally Blank

Appendix B:

RECORD OF CHANGES

The EOP record of changes documents when there is a revision, update, addition, or significant change to the plan or part of the plan. The on-going record is maintained in files at the Oakland County Homeland Security Division.

The following is a snapshot of the record of changes:

Oakland County EOP Record of Changes				
#	Specific Section / Annex / Page Changed	Brief Description of Change	Date of Change	Name of Person Making Change

This Page Intentionally Blank

Appendix C:

DISTRIBUTION LIST

The Oakland County EOP, in electronic format (email), hardcopy or via CD or USB drive, shall be provided to all county departments and partner organizations designated as a coordinating or primary agency of an Emergency Support Function (ESF) and all local Cities, Villages & Townships within Oakland County. A formal record of distribution shall be maintained in Oakland County Homeland Security Division files.

Oakland County Government, NGOs and Partners

- ☐ Oakland County Executive
- ☐ Oakland County Board of Commissioners
- ☐ Oakland County Compliance Office – Purchasing Unit
- ☐ Oakland County Public Communications Department
- ☐ Oakland County Risk Management & Safety
- ☐ Oakland County Corporation Counsel
- ☐ Oakland County Management & Budget Department
- ☐ Oakland County Human Resources Department
- ☐ Oakland County Information Technology Department
- ☐ Oakland County Facilities Management Department
- ☐ Oakland County Building Safety Division
- ☐ Oakland County Department of Health & Human Services Department
- ☐ Oakland County Health Division
- ☐ Oakland County Emergency Management and Homeland Security Department
- ☐ Oakland County Emergency Management Division
- ☐ Oakland County International Airport
- ☐ Oakland County Medical Examiner
- ☐ Oakland County Parks
- ☐ Oakland County Animal Control
- ☐ Oakland County Water Resources Commissioner
- ☐ Oakland County Sheriff
- ☐ Road Commission for Oakland County
- ☐ Oakland County Medical Control Authority
- ☐ Oakland County Community Mental Health Authority (now Oakland Community Health Network)
- ☐ Oakland Livingston Human Service Agency

State & Regional Officials

- ☐ Michigan State Police, EMHSD District 2 North Coordinator
- ☐ Michigan State Police, District 2 Metro Post
- ☐ Michigan Department of Transportation, Southeast Michigan Transportation Operations Center

Local Municipalities

- ☐ City of Auburn Hills
- ☐ City of Berkley
- ☐ City of Birmingham
- ☐ City of Bloomfield Hills
- ☐ City of the Village of Clarkston
- ☐ City of Clawson
- ☐ City of Farmington
- ☐ City of Farmington Hills
- ☐ City of Ferndale
- ☐ City of Hazel Park
- ☐ City of Huntington Woods
- ☐ City of Keego Harbor
- ☐ City of Lake Angelus
- ☐ City of Lathrup Village
- ☐ City of Madison Heights
- ☐ City of Northville
- ☐ City of Novi
- ☐ City of Oak Park
- ☐ City of Orchard Lake Village
- ☐ City of Pleasant Ridge
- ☐ City of Pontiac
- ☐ City of Rochester
- ☐ City of Rochester Hills
- ☐ City of Royal Oak
- ☐ City of South Lyon
- ☐ City of Southfield
- ☐ City of Sylvan Lake
- ☐ City of Troy
- ☐ City of Walled Lake
- ☐ City of Wixom

- ☐ Township of Addison
- ☐ Township of Bloomfield
- ☐ Township of Brandon
- ☐ Township of Commerce
- ☐ Township of Groveland
- ☐ Township of Highland
- ☐ Township of Holly
- ☐ Township of Independence
- ☐ Township of Lyon
- ☐ Township of Milford
- ☐ Township of Novi
- ☐ Township of Oakland
- ☐ Township of Orion
- ☐ Township of Oxford
- ☐ Township of Rose
- ☐ Township of Royal Oak
- ☐ Township of Southfield
- ☐ Township of Springfield
- ☐ Township of Waterford
- ☐ Township of West Bloomfield
- ☐ Township of White Lake
- ☐ Village of Beverly Hills
- ☐ Village of Bingham Farms
- ☐ Village of Franklin
- ☐ Village of Holly
- ☐ Village of Lake Orion
- ☐ Village of Leonard
- ☐ Village of Milford
- ☐ Village of Ortonville
- ☐ Village of Oxford
- ☐ Village of Wolverine Lake

This Page Intentionally Blank