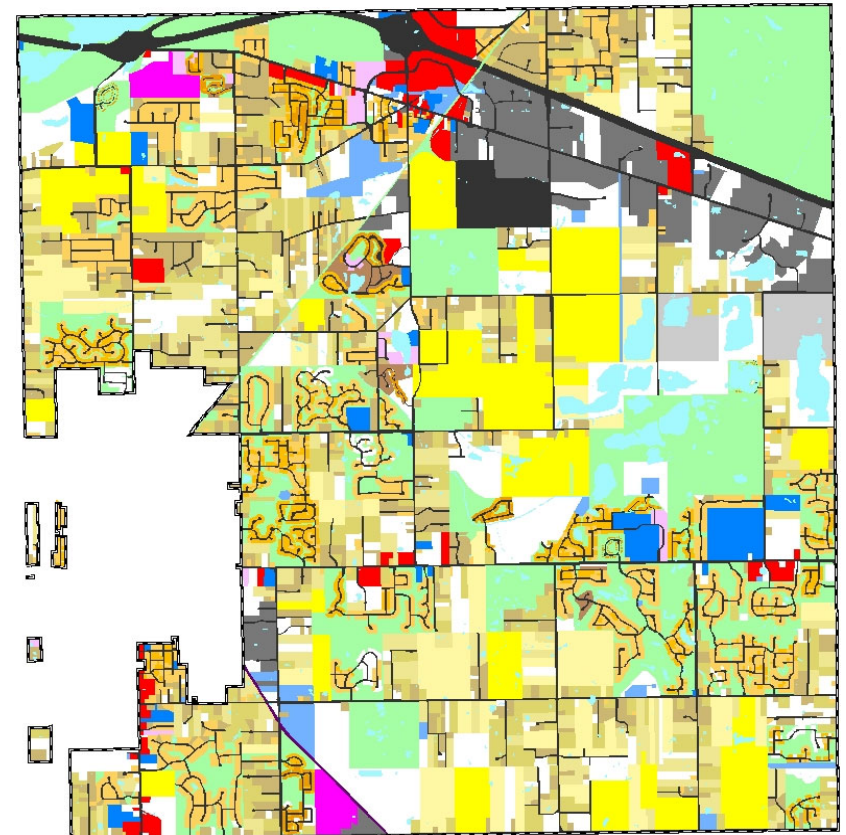
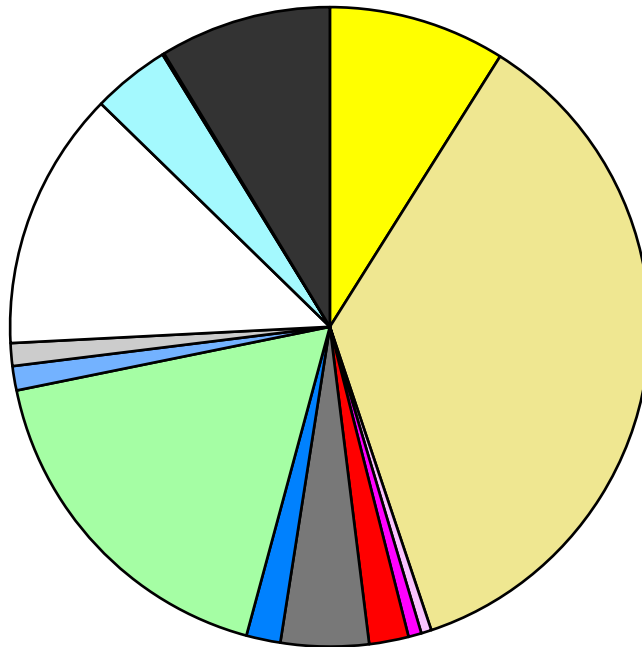


Land Use	Area (ac.)	Area (%)	Parcels	Parcels (%)
Agricultural	1,816.7	8.9%	44	0.5%
Single Family Residential	7,296.3	35.9%	7,368	84.0%
Multiple Family	104.6	0.5%	22	0.3%
Mobile Home Park	135.4	0.7%	2	0.0%
Commercial/Office	402.5	2.0%	115	1.3%
Industrial	905.0	4.5%	141	1.6%
Public/Institutional	349.2	1.7%	36	0.4%
Recreation/Conservation	3,579.3	17.6%	315	3.6%
Transp./Utility/Comm.	250.5	1.2%	32	0.4%
Extractive	231.4	1.1%	4	0.0%
Vacant	2,665.0	13.1%	696	7.9%
Water	797.7	3.9%		
Railroad Right-of-Way	19.5	0.1%		
Road Right-of-Way	1,760.9	8.7%		
Total	20,313.9	100.0%	8,775	100.0%

Single Family By Lot Size	Area (ac.)	Area (%)	Parcels	Parcels (%)
10 acres or greater	1,194.2	16.4%	64	0.9%
5 to 9.9 acres	1,045.6	14.3%	139	1.9%
2.5 to 4.9 acres	1,333.9	18.3%	363	4.9%
1 to 2.4 acres	1,464.1	20.1%	912	12.4%
14,000 to 43,559 sq. ft.	1,611.8	22.1%	3,369	45.7%
8,000 to 13,999 sq. ft.	473.1	6.5%	1,787	24.3%
Less than 8,000 sq. ft.	102.9	1.4%	729	9.9%
More than one unit per parcel	70.8	1.0%	5	0.1%
Single Family Sub-total	7,296.3	100.0%	7,368	100.0%

Land Use by Area

- Agricultural
- Single Family Residential
- Multiple Family
- Mobile Home Park
- Commercial/Office
- Industrial
- Public/Institutional
- Recreation/Conservation
- Transp./Utility/Comm.
- Extractive
- Vacant
- Water
- Railroad Right-of-Way
- Road Right-of-Way



For more information, maps, or questions about this data, please contact the Oakland County Planning at (248) 858-0720.