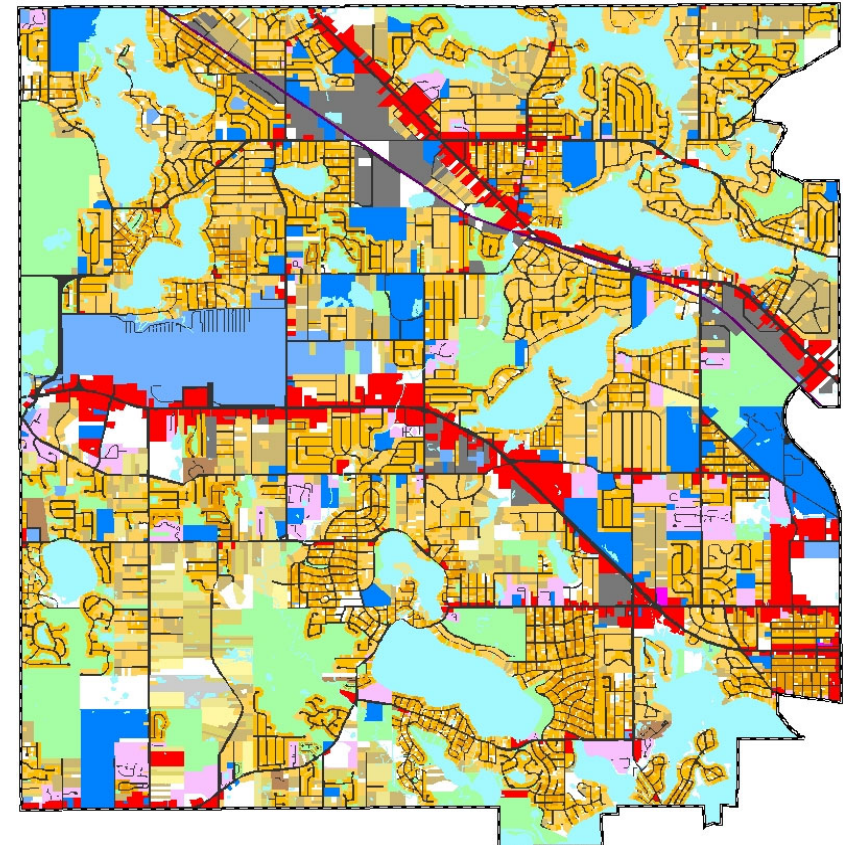
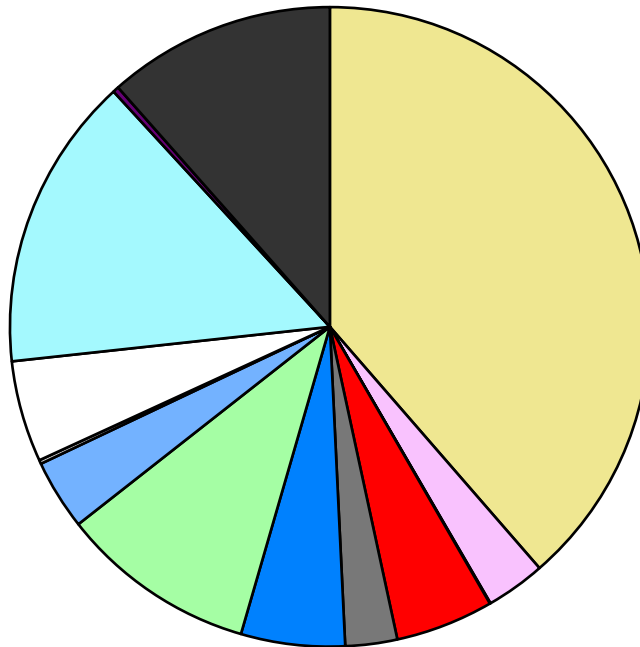


Land Use	Area (ac.)	Area (%)	Parcels	Parcels (%)
Agricultural				
Single Family Residential	8,706.3	38.6%	24,028	85.2%
Multiple Family	678.8	3.0%	119	0.4%
Mobile Home Park	7.8	0.0%	2	0.0%
Commercial/Office	1,118.0	5.0%	1,028	3.6%
Industrial	590.1	2.6%	198	0.7%
Public/Institutional	1,185.5	5.3%	153	0.5%
Recreation/Conservation	2,240.6	9.9%	425	1.5%
Transp./Utility/Comm.	801.2	3.6%	161	0.6%
Extractive	42.6	0.2%	3	0.0%
Vacant	1,155.6	5.1%	2,082	7.4%
Water	3,357.9	14.9%		
Railroad Right-of-Way	67.2	0.3%		
Road Right-of-Way	2,600.5	11.5%		
Total	22,552.0	100.0%	28,199	100.0%

Single Family By Lot Size	Area (ac.)	Area (%)	Parcels	Parcels (%)
10 acres or greater	129.9	1.5%	9	0.0%
5 to 9.9 acres	299.7	3.4%	43	0.2%
2.5 to 4.9 acres	294.1	3.4%	81	0.3%
1 to 2.4 acres	1,045.6	12.0%	734	3.1%
14,000 to 43,559 sq. ft.	3,304.7	38.0%	7,056	29.4%
8,000 to 13,999 sq. ft.	2,826.4	32.5%	11,181	46.5%
Less than 8,000 sq. ft.	729.8	8.4%	4,915	20.5%
More than one unit per parcel	76.3	0.9%	9	0.0%
Single Family Sub-total	8,706.3	100.0%	24,028	100.0%

Land Use by Area

- Agricultural
- Single Family Residential
- Multiple Family
- Mobile Home Park
- Commercial/Office
- Industrial
- Public/Institutional
- Recreation/Conservation
- Transp./Utility/Comm.
- Extractive
- Vacant
- Water
- Railroad Right-of-Way
- Road Right-of-Way



For more information, maps, or questions about this data, please contact the Oakland County Planning at (248) 858-0720.