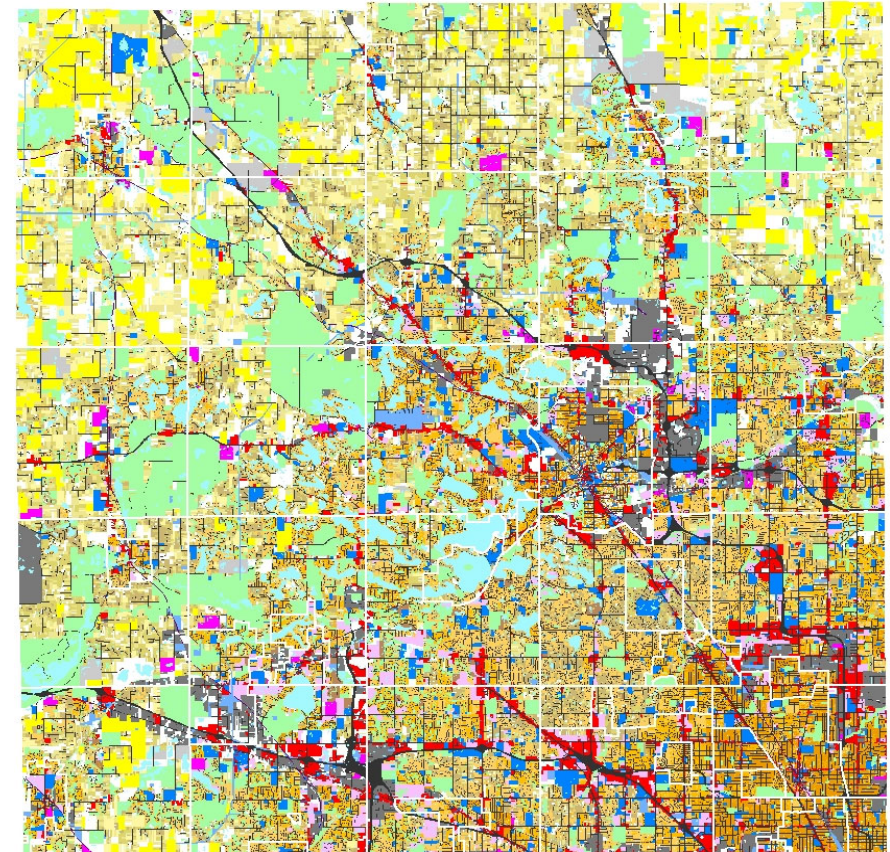
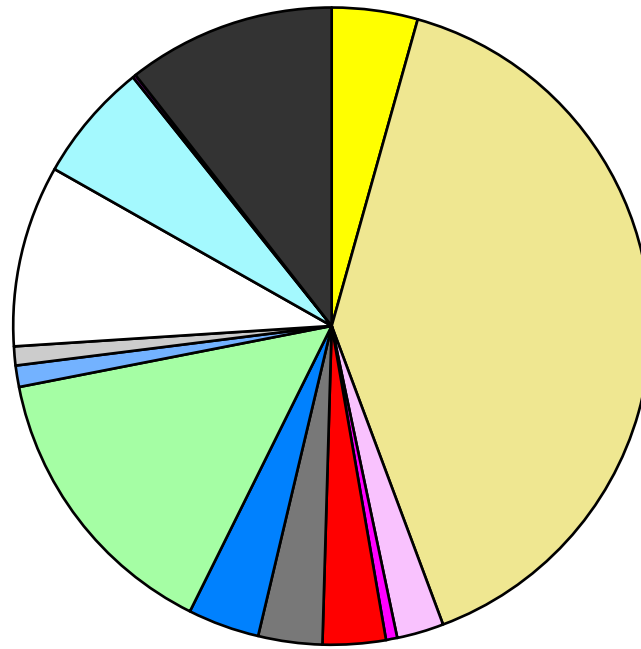


Land Use	Area (ac.)	Area (%)	Parcels	Parcels (%)
Agricultural	25,325.6	4.4%	693	0.2%
Single Family Residential	232,359.5	40.0%	371,822	85.8%
Multiple Family	13,931.0	2.4%	2,412	0.6%
Mobile Home Park	3,302.8	0.6%	237	0.1%
Commercial/Office	18,564.8	3.2%	12,860	3.0%
Industrial	18,867.7	3.2%	5,903	1.4%
Public/Institutional	21,074.1	3.6%	3,104	0.7%
Recreation/Conservation	84,902.4	14.6%	7,235	1.7%
Transp./Utility/Comm.	6,285.4	1.1%	1,215	0.3%
Extractive	5,581.2	1.0%	98	0.0%
Vacant	53,658.1	9.2%	27,738	6.4%
Water	35,248.3	6.1%		
Railroad Right-of-Way	1,009.9	0.2%		
Road Right-of-Way	61,393.3	10.6%		
<b>Total</b>	<b>581,504.0</b>	<b>100.0%</b>	<b>433,317</b>	<b>100.0%</b>

Single Family By Lot Size	Area (ac.)	Area (%)	Parcels	Parcels (%)
10 acres or greater	31,323.4	13.5%	1,776	0.5%
5 to 9.9 acres	31,039.5	13.4%	4,008	1.1%
2.5 to 4.9 acres	29,251.5	12.6%	8,201	2.2%
1 to 2.4 acres	37,649.6	16.2%	24,317	6.5%
14,000 to 43,559 sq. ft.	58,485.1	25.2%	116,408	31.3%
8,000 to 13,999 sq. ft.	28,271.6	12.2%	113,779	30.6%
Less than 8,000 sq. ft.	14,106.4	6.1%	103,155	27.7%
More than one unit per parcel	2,232.3	1.0%	178	0.0%
<b>Single Family Sub-total</b>	<b>232,359.5</b>	<b>100.0%</b>	<b>371,822</b>	<b>100.0%</b>

#### Land Use by Area

- Agricultural
- Single Family Residential
- Multiple Family
- Mobile Home Park
- Commercial/Office
- Industrial
- Public/Institutional
- Recreation/Conservation
- Transp./Utility/Comm.
- Extractive
- Vacant
- Water
- Railroad Right-of-Way
- Road Right-of-Way



For more information, maps, or questions about this data, please contact the Oakland County Planning at (248) 858-0720.