

## KEY NOTES

- ① NEW ACCESSIBLE TRAIL
- ② NEW BRIDGE OR BOARDWALK
- ③ NEW TRAIL
- ④ EXISTING PARKING
- ⑤ NEW PICNIC SHELTER WITH OVERFLOW LAWN AREA
- ⑥ EXISTING RESTROOM
- ⑦ EXISTING SHELTER
- ⑧ FUTURE SMALL OVERLOOK SHELTER
- ⑨ NEW TABLES IN PICNIC GROVE
- ⑩ NEW SMALL GROUP PICNIC AREA
- ⑪ NEW LARGE GROUP PICNIC AREA
- ⑫ RENOVATED PLAYGROUND
- ⑬ NEW ACCESSIBLE WALK CONNECTION
- ⑭ NEW NATURE PLAY POCKET/ ADVENTURE PATH
- ⑮ NEW WOODLAND NATIVE GARDEN
- ⑯ FUTURE OUTLOOK
- ⑰ ACCESSIBLE KAYAK LAUNCH BY OCPR
- ⑱ PROPOSED BIO-RETENTION
- ⑲ HIGH QUALITY WOODLAND
- ⑳ FUTURE PARK MONUMENT SIGN
- ㉑ PROPOSED TRENCH DRAIN
- ㉒ FUTURE NEIGHBORHOOD CONNECTION

# PONTIAC OAKS: SCHEMATIC DESIGN PLAN





# PONTIAC OAKS: SCHEMATIC DESIGN PLAN





# PONTIAC OAKS: SCHEMATIC DESIGN PLAN





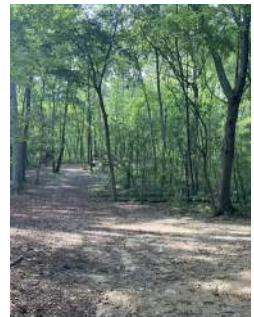
# WHAT THE COMMUNITY SAID

## PREVIOUS COMMUNITY ENGAGEMENT EFFORTS NOTED THE FOLLOWING CONCERNS AND SUGGESTIONS:

- Prioritize preservation of trees, natural spaces, quiet areas, scenic views and open spaces for play.
- Gathering spaces, pavilions and picnic areas are important
- Playgrounds ranked high for Pontiac respondents
- Disc golf is important to regional users
- Improve maintenance
- Improve accessibility
- Improve safety
- Want to feel welcome, including removal of language barriers
- Provide working, clean restrooms
- Preserve the natural beauty of the park
- Keep/improve water access
- Add safe walking paths
- Provide spaces for family, friends and community events
- High ranking programming including live music, kayak rentals, nature appreciation programs, family events, food trucks, and nature hikes

# HOW FEEDBACK WAS INCORPORATED

- Trail routing minimizes disturbance by following existing paths or disturbed areas where possible
- New pavilion provides additional gathering space in a visible location. This area is a prime location for respondent preferred programming such as live music and family events.
- Playground improvements are complete, including connecting sidewalks.
- Disc golf will be preserved as modified course until other facilities can be made available.
- County staff have been working on park maintenance, including steps such as incorporating native or no-mow areas to provide habitat and decrease maintenance needs.
- New trails will be constructed of asphalt pavement or stabilized gravel surfaces to improve accessibility.
- Further activation of the park with trails, recent waterfront improvements, new shelter, and playground improvements will help increase visibility and safety within the park.
- Oakland County Parks staff are working on restroom improvements at the existing building.
- All proposed improvements are designed to minimize disturbance to the natural features and develop in a responsible way while providing access to nature for all.
- Recent waterfront improvements provide greater access for boating,
- kayaking, fishing, and general enjoyment of the lake and adjacent wetland areas.
- Green infrastructure improvements may help keep pollutants out of the lake and improve water quality.
- Native plantings will increase the biodiversity and natural beauty of the park.



# PONTIAC OAKS: SCHEMATIC DESIGN PLAN