

MISSION STATEMENT: *to provide state of the art computer technology and related services to criminal justice and public safety agencies . . .*

CLEMIS Times

2005
Summer Edition

Courts & Law Enforcement
Management Information System
Oakland County Information Technology

CLEMIS NetRMS is Here !

By Laura Harper, CLEMIS User Support

The new CLEMIS Records Management System referred to as “CLEMIS NetRMS” is currently being implemented at participating CLEMIS agencies. There are 12 agencies using the new system and several agencies scheduled for training during the next couple months.

We are very pleased to report the agencies using the new system find it very user friendly. With their help, CLEMIS staff is continuing to enhance NetRMS with new features. One new feature includes integrating the current legacy mainframe searches into the NetRMS system. Searches, Department Bulletins, and Emergency Contact modules are only a few of the features that will be available to each CLEMIS agency.

Installation of the NetRMS system to additional agencies will begin soon. Personnel will be able to get familiar with the system and use some of the features prior to actual report writing instruction. Your agency will receive notice of training dates soon.

CLEMIS is excited about the NetRMS System, and looking forward to agencies response to the new system.

INSIDE THE TIMES:	Page
Web LEIN a Success	2
CLEMIS PictureLink Mugshot	3
COMSTAT	4
CLEMIS InfoView Reports	4
CAD User Group	5
Royal Oak Records Supervisor	6
Interested Agencies	6
MSP Public Sexual Offender Registry	7
AVL-Useful Tool or Big Brother	8
Welcome New Agencies	8
Financial Update—Radio Project	9
CLEMIS InfoView Tips	10
Common CLEMIS Help Calls	11
Advisory Committee Schedule	12
CLEMIS Contacts	12



CLEMIS provides solutions through a cooperative effort that are affordable

CLEMIS WebLEIN a Success

By George Butler, CLEMIS User Support

CLEMIS WebLEIN was successfully implemented at all participating agency sites before the State and Federal deadline. The new CLEMIS LEIN system is easy to use, very fast, and the uptime, or availability of the system, has been tremendous. CLEMIS averages about 8,500 queries a day on this new system and has approximately 1,800 member devices that can connect to it.

By serving as a technical link among multiple agencies, CLEMIS promotes communication and sharing of criminal justice information.

CLEMIS standards and policies, as established and monitored by the Advisory Committee, are important in assuring the integrity of information entered into the CLEMIS System . . .

The new CLEMIS WebLEIN system offers online help. It provides access to Michigan's Secretary of State (SOS) images and the system can be accessed via handheld Blackberry devices. The CLEMIS WebLEIN system has advanced features that were not available to CLEMIS members that were on the legacy system.

CLEMIS WebLEIN Screen Shot

Below are comments from CLEMIS members about the new WebLEIN system:

Wendell Moore of Troy PD – Research and Technology Administrator
“The system is fast, reliable, and easy to configure. The SOS images for Troy’s investigators is a huge time saver”.

Kathy O’Bryan of Westland PD – Dispatch Supervisor
“It’s a very nice system and the transition to the new system was very easy.”

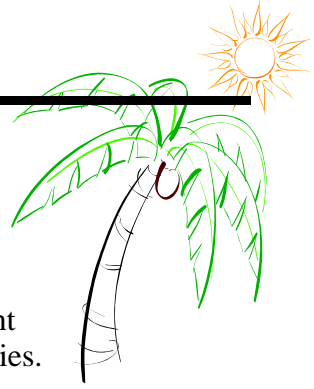
Mary Kay Miles of Farmington Hills PD – Records Supervisor
“The new system has been well received at Farmington Hills and it is a great improvement from the old system.”

Dale Rauch of Fenton PD – Detective
“The SOS Images and Talon Points information is priceless. This feature saves me time!”

Mary Griffin and staff of Auburn Hills PD – Dispatch Supervisor
“The new CLEMIS WebLEIN system is very user friendly. SOS photo’s are great. WebLEIN is faster and better than the old system.”

CLEMIS PictureLink Mugshot

By Lt. Kim G. Rossman, Oakland County Sheriff's Office



The new CLEMIS PictureLink Mugshot System has been deployed at 41 law enforcement agencies and the benefits of the new system are already being seen by our member agencies.

On June 20, 2005 the Bloomfield Twp PD arrested Tracy Tramain Beavers for Felony, Retail Fraud. He was subsequently booked using the CLEMIS PictureLink system and fingerprinted using the CLEMIS Live Scan system. Mr. Beaver's fingerprints were sent to the State AFIS for analysis and a Criminal History response. Upon receiving Mr. Beavers Criminal History record, his PictureLink record was seamlessly updated to reflect his criminal history lead name of Tracy Johnson. In addition, his assigned SID and FBI numbers were also linked to his PictureLink record. Also, other names he had used in the past; such as Tracy Jefferson and Tracy Swain, along with additional Social Security and Drivers License numbers, were linked to this record. As a result of the SID association, a link was established to a previous Plymouth Twp arrest along with the associated photograph taken by Plymouth Twp PD. (See PictureLink web view below)

By linking the PictureLink mugshot record with the fingerprint record, all investigators will benefit from the associations that are created as part of the back-end system processing. The new system combined with the Live Scan / AFIS architecture will give investigators greater information than ever before.



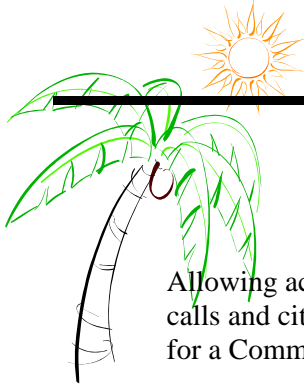
PictureLink on the Internet

CLEMIS members should be aware that the PictureLink system is accessible directly from the web. The ability to retrieve images, search on over a hundred data fields, create line-ups, witness sessions and reports, along with using the Facial Recognition tool built into the PictureLink.net application, are available from the CLEMIS PictureLink web site. That address is: <https://clemisimages.co.oakland.mi.us/plnet>. Users wishing to access the web system can obtain a user name and password from their agency's mugshot administrator.

PictureLink in the Patrol Units and on "Blackberry" devices.

Within the next three months, the CLEMIS PictureLink system will be available to all CLEMIS MDC users. Operated from the patrol unit, the application has been formatted to fit the MDC screens and will offer the street officer nearly the same functionality as the desktop version.

PictureLink has also been formatted for the 'Blackberry' handheld devices and will be available to Investigators by late September. By combining the nearly 1.5 million CLEMIS images already on file with those to be provided by the State Police, the street officer and Investigator will have another valuable identification tool at his or her disposal.



COMSTAT

By Penny Peters, CLEMIS User Support

Allowing access to public information in a timely fashion can result in less police hours spent on phone calls and citizen awareness. The Oakland County Board of Commissioners agreed and approved funding for a Community Oriented Policing Web Site project (COPS).

The goal of this project is to utilize web technology and provide communities and police departments an improved way to interactively communicate.

Oakland County's Web Development team is working with CLEMIS, GIS, and several law enforcement agencies consisting of the Oakland County Sheriffs Office and their 12 Sub-stations, Pontiac PD, West Bloomfield Twp PD, Lake Angelus PD, Ferndale PD, Farmington Hills PD, Farmington City DPS, Hazel Park PD, South Lyon PD, and Royal Oak PD to create and maintain community oriented policing web site templates for Oakland County CLEMIS agencies. Look for these departments to launch their community oriented policing web sites by the end of the year. As agencies go live with these sites, links will be placed on the CLEMIS web site for all to review.

Oakland County's content management web tool allows individual police departments to manage their own web site(s) using non-technical staff. Thus, allows the ability to immediately post an Amber alert, terrorist alert, crime pattern, be-on-the-lookout for, or other pertinent information. Also included will be a secure log-on so all CLEMIS police departments can share privileged information enhancing cross-jurisdiction communications.

Another aspect of the web site project is the ability to implement interactive maps or map images. Maps can be created in CrimeView showing crime patterns, hotspots, CSC offenders, Parolees etc., and posted on the CLEMIS CrimeWatch site. The interactive map shows select incident data updated daily and queried by the community, informing residents of what's happening in their neighborhoods. Visit the following web site to look at other police web sites with maps (<http://www.ojp.usdoj.gov/nij/maps/weblinks.html>) or visit the following web site and use the interactive map yourself: <http://mapping.arjis.org/scripts/esrimap.dll?name=mapgen&subcmd=start&mapview=2>

CLEMIS InfoView Reports

By Laura Harper, CLEMIS User Support

The CLEMIS InfoView web-based Reporting System is being used by most participating agencies and has been available to all agencies for the past several years. CAD, NetRMS, FBR, and MICR reports are just a few of the CLEMIS applications that can be used to get statistical information from the InfoView Reporting System.

Historically, Infopac Reports have been made available to each agency in the form of both paper and microfiche. **Effective October 1, 2005**, these paper reports and microfiche will no longer be printed and mailed to your agencies. Infopac will no longer be available.

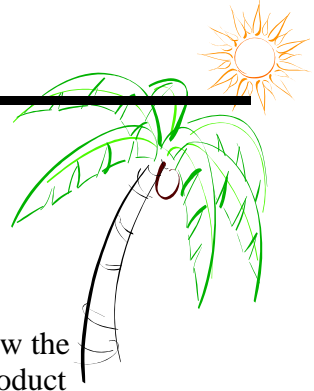
Access to reports using InfoView through the web now gives your agency the ability to request and create your own reports whenever you need them. Agencies that are not using InfoView and are interested in training, please send an e-mail to teaguec@co.oakland.mi.us.

Also, for your convenience, CLEMIS can e-mail select reports directly to someone at your agency automatically.

CAD User Group

By Captain Gary Mayer, Troy Police Department

and CLEMIS CAD User Group Chair



The CLEMIS CAD (Computer-Aided Dispatch) User Group was formed in 2002 to allow the Public Safety Emergency Communications Professionals utilizing this relatively new product a forum to learn, and provide and share valuable input about the CAD System. It is generally understood that new technological changes require proper management for implementation and user acceptance. The CAD User Group is an effort by CLEMIS staff to reach out to the users to allow their input in the development of system changes or upgrades.

Since March of 2002, Chuck Corbett of CLEMIS (User Support Specialist / CAD Administrator) has met regularly with a group of over twenty-five professionals representing the Communications Sections of the 53 CAD Dispatch Centers that use the CLEMIS Computer-Aided Dispatch. Chuck instructed the group on updates in the system software, solutions to problems that came up, and methods to be more efficient in the critical job of Public Safety Emergency Communications. Chuck listened to the concerns of the users, made the changes and corrections that he had authorization to, and noted any programming matters that the vendor needed to address. Chuck's easy going nature allowed him to deal with the frustrations of the users as they described a particularly annoying problem and requested a fix - now!

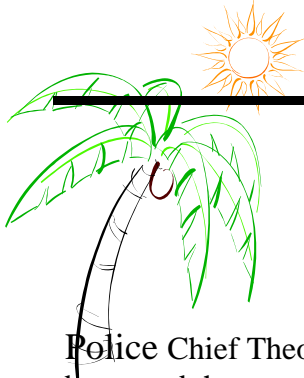
Members of the CAD User Group represent Police, Fire, and EMS Computer-Aided Dispatch Users from throughout Oakland, Macomb, Wayne and Livingston Counties. Even though they are all from agencies of various sizes, responsibilities and work loads, they all have a common goal: to deliver quality service to the public and the public safety professionals they serve. This is demonstrated in the attention they have given to Chuck and the improvement suggestions they have offered.

One of the most interesting aspects of the group is the roundtable discussions at every meeting where individuals describe system problems they are having and others offer solutions based upon their experience with the same or similar problem. This group learning experience and problem solving has helped many of the users to be more efficient on the job.

As the CAD User Group Chairperson, I would personally and publicly like to thank Chuck Corbett for his hard work, dedication, humor, and patience while working the "bugs" out of the new CAD system with the help of the Users. Chuck is going to be focusing on the new CLEMIS PictureLink Mugshot System, and another member of the CLEMIS staff will be appointed the new CAD Administrator. A warm welcome to Ms Penny Peters. We look forward to working with Penny and making the CLEMIS CAD System the best system for all law enforcement and public safety agencies in the CLEMIS footprint.

If you are a CLEMIS CAD user, please consider attending one of the User Group meetings. The next meeting is scheduled for October 21, 2005 at 1:30pm at Oakland County Information Technology. There will be a demonstration of the next release of CAD at this meeting.

Visit the CLEMIS web site at www.clemis.org



Royal Oak Records Supervisor

By Deputy Chief Jim Niks, Royal Oak Police Department

Police Chief Theodore Quisenberry and the rest of the Royal Oak Police Department would like to welcome the department's new Record's Supervisor, Ms. Rebecca Haynes. Rebecca is replacing Barbara Wolfe who is enjoying her well earned retirement.

Ms. Haynes came to Royal Oak from Boyne City, Michigan, where she worked as the City Clerk and Personnel Manager. She helped run elections, create policy manuals, and helped redo their city codes.

Ms. Haynes has an interesting background. She has done what most police officers would love to do. She assisted in the development of a new police department in Truckee, California. She was one of the first employees hired. She then had to order everything from paper clips to pistols to patrol vehicles. She arranged for background checks and polygraphs and even participated in making the departmental logo. After hiring the first 15 people, they remodeled their building and brought staffing levels up to 30 people. They hired community service officers, parking officers, and records personnel. They even developed their own new records system.



REBECCA HAYNES

Rebecca Hayne's organized the first community-wide fingerprinting of children in the Truckee, California area. The children ranged in age from pre-school to junior high. The Truckee Chief of Police considered her a critical employee that helped make the start of his police department a success.

Fortunately for us, Ms. Haynes wanted to return to Michigan to be closer to her family.

Ms. Haynes was familiar with the California Law Enforcement Transmission System (CLETS) and is now learning the CLEMIS WebLEIN System. She is getting acquainted with Royal Oak Police Department procedures and staff, and her experience is going to be a real asset to the department. We are looking forward to a long, pleasant association with Ms. Haynes.

A warm welcome from CLEMIS staff and participating agencies to Ms. Rebecca Haynes of Royal Oak PD !

Interested Agencies

Any agency that submits a written request to join CLEMIS by September 12, 2005 will be reviewed by the CLEMIS User & Terminal Committee September 21, 2005 at 1:15pm. A representative from your agency is required to attend.

A recommendation will be presented to the Advisory Committee that afternoon.

MSP Public Sex Offender Registry

By John Hoppesch, CLEMIS Software Engineer



The number one request for mapped data by CLEMIS CrimeView users is sexual offender data. CSC (Criminal Sexual Conduct) data is nearly impossible to keep up-to-date in the mapping application due to zip code restraints and the quality of the published data. Currently, sexual offender data can only be retrieved by one zip code at a time making it nearly impossible to keep a close watch on offenders throughout the entire region.

CLEMIS engineers have been working diligently to streamline this process. As this process progressed, a few problems were discovered. Some records contain incorrect spellings of street and city names, and some had incorrect zip codes. Inaccurate data, particularly zip codes, can place the sexual offender in an entirely different part of the state (most were off by one digit); very critical for citizens looking for sex offenders in their community.

An audit recently completed for MSP by the Michigan Auditor General of the sex offender registries (public and private) substantiated CLEMIS's findings. The objective of the audit was to determine the effectiveness, accuracy, and completeness of the Sex Offender Registry (SOR) and the Public Sex Offender Registry (PSOR). (June 2005)

The most important finding of the audit was "Law enforcement agencies and the MSP Sex Offender Registry Unit could be more effective in monitoring and registering sex offenders with more accurate and complete reports". The complete report can be found at <http://audgen.michigan.gov/comprpt/docs/r5559504.pdf>

CLEMIS engineers are now using programming tools to download CSC data from the State of Michigan's Public Sex Offender Registry (PSOR) for all zip codes in Oakland, Wayne, Macomb, Washtenaw, and Livingston counties and store it in a usable format. This data is updated the first of every month. The sexual offender information can then be viewed in a CLEMIS InfoView report such as:

- Public Sex Offender Listing with Unknown City Names
- Public Sex Offender Listing by City Code
- Public Sex Offender Listing by Demographics
- Public Sex Offender Listing by Zip Code
- Public Sex Offender Listing by Name
- Public Sex Offender Listing by Offense

**CLEMIS
agencies
share data
and use
advanced
technology
that
improves
homeland
security,
identifies
suspects,
and solves
crime.**

When an agency submits sex offender information, the state has no way of verifying the offender's address.

Each agency needs to do its part making sure all sexual offender data submitted to the state is as accurate as possible. CLEMIS staff is not responsible for the accuracy of information provided to or from the Michigan Public Sex Offender Registry.

Data can be examined by running the newly created reports in CLEMIS InfoView to verify spellings of street names, city names and zip codes, and by looking for missing offenders known to be registered in your community.

If errors are discovered, please use CLEMIS WebLEIN to correct any information with the State. This will help CLEMIS when the PSOR data is extracted but most importantly, it will provide citizens in your community with accurate information.



AVL— a Useful Tool or a Big Brother ?

By Penny Peters, CLEMIS User Support

Many officers believe that having AVL (Automated Vehicle Locator) on their vehicles is just another way for the public or their bosses to keep an eye on their every move. That was not the case when Sterling Heights Police Department wanted to see where slain Officer Mark Sawyers had traveled the night he was stalked and gunned down by defendant Timothy Berner.

During the initial hours of the Berner investigation, AVL data was requested for Officer Sawyer's patrol vehicle. CLEMIS provided a detailed map of where Officer Sawyer's had been during his tour of duty. Locations were checked on the map for any type of camera or video surveillance. The ATM camera that provided the photos of Berner's camaro, along with the AVL data, showed that Berner was stalking Officer Mark Sawyers and another Sterling Heights Officer.

In another incident, AVL also assisted Sterling Heights with a police impersonation incident. A female driver was stopped by someone whom she believed to be a Sterling Heights Police Officer. The female stated that she was accosted during the stop. The department requested AVL data on their vehicles. The AVL data vindicated the officers

showing there were no Sterling Heights Vehicles in that area at the time of the alleged incident.

In a different community, two officers were accused of brutality at a particular location. After examination of AVL data, it was determined those same officers were in an entirely different area of the city.

Earlier this year, in the case of a stolen Michigan State Police car stolen from Groveland Twp, the location of the vehicle and the direction it was traveling could have been determined if AVL data was being collected.

In combination with additional layers of data, such as incidents displayed on a map, it is easy to determine if the number of patrol units is sufficiently covering your community. AVL can aid decision makers in making informed decisions when reallocating valuable resources.

In conclusion...AVL . . . it CAN be your big brother.

To obtain AVL data, a written request from your agency's Chief/Director must be submitted to CLEMIS.

Welcome New Agencies

The following agency was approved as a new CLEMIS participant by the CLEMIS Advisory Committee on April 21, 2005 :

Washtenaw County Sheriff

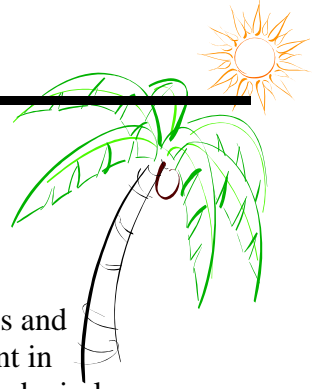
The following agencies were approved as new CLEMIS participants by the CLEMIS Advisory Committee on July 21, 2005 :

***Ann Arbor Police Department, Chelsea Police Department
Eastern Michigan University, Milan Police Department
Northfield Twp Police Department, Pittsfield Department Public Safety
Saline Police Department, University of Michigan Department Public Safety
Ypsilanti Police Department***



Financial Update of Radio Project

By Robert Daddow, Deputy County Executive



On May 23, 2005, the CLEMIS Radio Oversight Committee discussed the financial status and projections of the radio project through December 31, 2006. The December 31, 2006 point in time has been selected since the State legislation enabling the collection of the wireline and wireless telephone surcharges ends at that date. The State legislature has been discussing the extension and may take up the issue in connection with the telecommunications legislation expected to be passed this fall. No present legislation on this matter has been introduced leaving an operating uncertainty for 2007 and beyond as to the funding of the Oakland County CLEMIS Radio Communications project.

In connection with the presentation noted above, a memorandum dated May 24, 2005 was produced along with accompanying exhibits involving the project. Several of the pertinent matters are discussed in the memorandum. The memornadum is located on the County's web site under www.clemis.org then click on the Radio System link.

The tower construction is nearing completion with only four remaining towers to be constructed over the summer of 2005.

The City of Detroit has relinquished the radio frequencies in accordance with the May 2004 agreement with Oakland County. Likewise, the County has relinquished its licenses of frequencies to the City of Detroit. Only ministerial matters remain.

The console interface card that enables voice communications from the console to the field equipment is still being developed by the console vendor. This area represents the single point of uncertainty concerning the launch of the radio project. The issue is nearing resolution with the final interface card expected to be installed by early August.

The cost pressures of the project continue to mount. The causes of the pressures have been described in some level of detail and include: frequency interference and tower permit delays; significant increases in the number of portable and mobile equipment requested over the original requests; various historical matters; and others.

Based on the estimated cost to complete the project, the cash flow that would be expected in the next 18 months over operating needs, and the timing of the cash disbursements, the estimated amount of cash remaining in the Radio Communications Fund as of December 31, 2006 is \$773,000. The contingency has been used up in earlier project needs. In addition, there are several issues that could adversely impact the project's cost. We would entreat you to read the detailed memorandum located on the County's web site.

Visit www.clemis.org and click on the Radio link



CLEMIS InfoView Tips


By John Hoppesch, CLEMIS Software Engineer

Document Searching - The InfoView search bar is a great way to find documents quickly by searching key words.

Access documents available to you and other users.

 [Advanced...](#)

From the Home Page, locate the search bar. Type a keyword and click on the “Search” button. InfoView will then display a list of documents that meet your criteria.

Exporting Data to Excel  – The latest version of InfoView offers an easy way to save report results into Microsoft Excel Spreadsheets.

Run any InfoView report and enter appropriate prompts. After results are displayed, click the “Save” hyperlink in the upper left hand corner of the report. [Save](#)

Next select “Microsoft Excel format (.xls)” from the “Save to my computer” section. Then click the computer icon to the left.

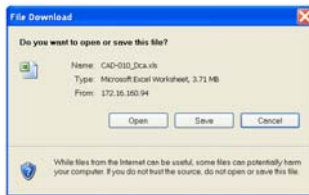


Save to my computer

Save this document to your computer as:

- ☒ Microsoft Excel format (.xls)
- ☐ PDF format
- ☐ BusinessObjects document (.rep)

Wait a few seconds while the document is being created. After the “File Download” box has appeared, Click “Save” and save the XLS document to your computer.



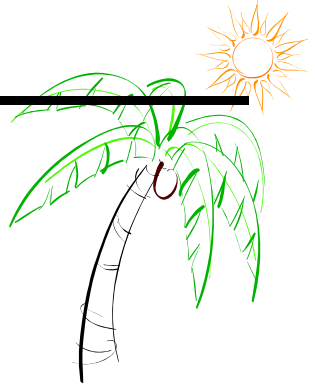
After the XLS file has been downloaded, click both close buttons to return to the report.

Your Excel document can now be used for various reasons. Here are a few ideas for using your saved data:

- Create custom graphs in Excel.
- Import the data into third party applications.
- Merge data with an outside data source to create a new report.
- Add additional calculations.
- Customize reports to your liking.

Note: Once data is saved to your PC in XLS format, it cannot be updated.
You will need to manually re-download the report.

CLEMIS InfoView Tips (continued)



Logging out of InfoView – Please make sure to log out of InfoView when you are done running reports. Logging out frees up server processor speed for other uses. The default time out is 20 minutes. After that time, you will need to sign-in again.

**If you need any assistance using CLEMIS InfoView,
please ask your System Administrator to call the CLEMIS Help Desk**



CLEMIS Help Desk

248.858.5265

**Please have your
System Administrator call**

Common CLEMIS Help Desk Calls

By Leanne Robinson, CLEMIS User Support

When you call the CLEMIS Help Desk, do they ask you to restart (reboot) your PC ?
Why would this help solve your problem ?

Answer:

Shutting down your software and restarting the PC will do a couple of different things which may resolve your PC or software problems:

Restarting the PC will create a new connection to the network. If there was an interruption or bad network connection, restarting the PC could resolve your problem.

Sometimes software processes will “lock” or “hang-up”. Shutting down your software and restarting your PC may reinitialize and free up the processes. Restarting the software program may resolve your problem.

Always perform a “restart” or “reboot” prior to asking your System Administrator to contact the CLEMIS Help Desk.

The CLEMIS vision is to empower criminal justice and public safety agencies to maximize the use of collected data, so they may enhance their daily operations and perform comprehensive planning.