

BEAVERS

in Oakland County

American beavers are the largest rodent native to the United States. They can be found in a number of freshwater habitats in Michigan.

BEAVER FACTS

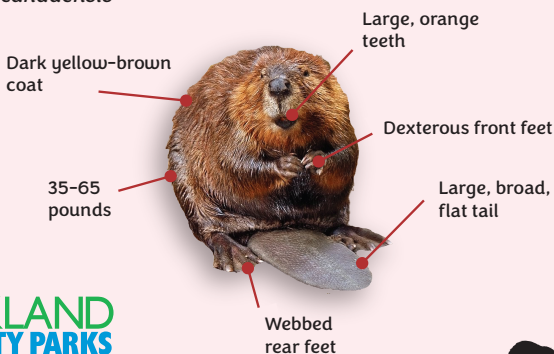
- Beaver populations in southeast Michigan have made a comeback after nearly 150 years.
- A beaver's teeth grow continuously throughout its lifetime, and they must gnaw on woody material to keep their teeth from getting too long.
- Beavers building dams is good for natural ecosystems and essential for river health.
- Beavers are herbivores that enjoy eating leaves, twigs, bark, and aquatic plants.
- Beavers have webbed feet and a rudder-like tail that can propel them through the water at 5 mph.



BEAVER ID

American beaver

Castor canadensis



LIVING IN HARMONY WITH BEAVERS

BEAVER DAM-AGE

Though beavers are an important part of our ecosystem, their natural behaviors may end up causing property damage. Contact the Michigan Department of Natural Resources for information on furbearing licenses and trapping/removing beavers in Michigan. Follow the QR code below for a direct link.



ECOSYSTEM ENGINEERS

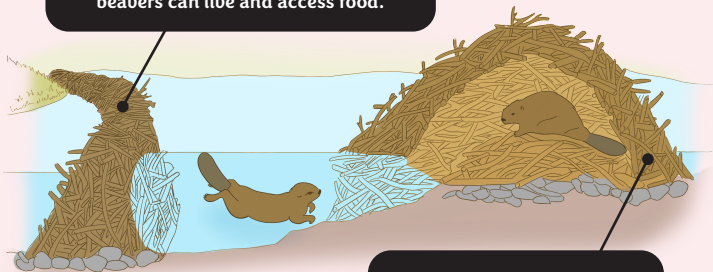
Beavers have a positive impact on our environment by creating, modifying, and maintaining woodland, wetland, and stream ecosystems. Beavers increase biodiversity, help reduce impacts of climate change, and promote meadow regeneration by cutting down trees.



BEAVER DAMS VS. LODGES

Beavers build dams and lodges using woody material from their natural habitat.

Dams are made to create ponds where beavers can live and access food.



Lodges are used for shelter.

FOR QUESTIONS:

Email: ParksNR@oakgov.com

