

Groveland Oaks County Park

Camper Guide & Map



2025 Pricing & Hours
Open May 1-Oct. 6



14555 Dixie Highway
Holly, MI 48442
248-634-9811

Welcome to Groveland Oaks Campground

2025 Season: May 1 - October 6

Groveland Oaks County Park features Stewart Lake and has the below amenities (see inside for availability/times):

- Camp store
- Sandy beach
- Skate park
- Bocce ball
- Mini golf
- 3 playscapes
- Sand volleyball
- Gaga ball pit
- Arcade
- Shuffleboard
- Basketball court
- Accessible fishing pier
- Accessible kayak launch - Summer 2025
- 2-mile paved & grass trail
- Boat & bike rental
- Bikes skills course

The campground features:

- 267 campsites
- 2/4/6-person camping cabins
- 12 group camping sites
- Summer 2025 - WiFi by vendor
- 6-person Camping Yurts
- Laundry and free showers
- Firewood, ice & bait sales



Friendly reminder - If you are planning a visit to Holly Oaks ORV Park; only licensed, registered vehicles may operate in the campground and on county roads.

Contact Station: 248-634-9811

In-season: 8 a.m.-9 p.m.

Off-season: 9 a.m.-3 p.m. (M-F, by phone only)

Planning Your Visit

Check-in time for campers is 3 p.m. (no check-in after 9 p.m.).
Check out time is 1 p.m.

Day Use: 8 a.m.-10 p.m.

The campground areas of the park are for campers and their guests only. Parking available in the day use lot. Overnight camping guests with vehicles are required to have an overnight permit. Please see contact station for details and fee.

If you are planning to have a large group or party at the park, please refer to our pavilion rental information.

Reservations for Camp Sites, Cabins, Yurts & Groups

Call us at 248-634-9811 or visit us online at OaklandCountyParks.com

Individual campsites, cabins and yurts are available **180 days** in advance (approx. 6 months).

Group areas and pavilions are available **335 days** in advance (approx. 11 months). Pavilions require phone reservation.



Individual Campsite Fees

Full Hook-Up Pull-Through Sites 1-5	\$58 (\$53*)
Full Hook-Up Sites 6 - 112	\$53 (\$48*)
Water/Electric Pull-Through Sites 127, 129, 131 & 133	\$48 (\$43*)
Water/Electric (remaining sites)	\$43 (\$38*)
Holiday/Special Event Rate	+\$5/night

*Sun-Thurs Rate (non-Holidays) for Oakland County Residents

Monthly Rates

20% discount off daily rates (for continuous 30 days on same site)

Monthly fee must be paid at time of initial reservation/registration.

Special event fees are not included (additional \$5/night).

Important Information Individual Camp Sites

- Weekends require two night minimum (holidays, three nights)
- Guest reservations are limited to three per household
- Check-in time is 3 p.m. (no check-in after 9 p.m.), check-out time is 1 p.m.
- Changes to reservations dates/sites after a reservation has been made will incur a \$10 change fee. No modifications can be made to a reservation after 3 p.m. on the day of the reservation.
- Cancellations on reservations made seven or more days prior to the start of the reservations will be refunded, minus a \$10 fee.
- Cancellations made less than seven days prior to the start of reservation and before check-in time on the day of the reservation will be refunded 50% minus a \$10 fee. Day of reservation 3 p.m. on, no refund.



Group Area Camping Site Fees

Group camping is a six night reservation beginning on Wednesday 8 a.m. of reservation through Tuesday 1 p.m.

Group Area #1 and #12 (20 campsites per)	\$1,300/site
Group Area #2-#11 (15 campsites per)	\$1,100/site
Holiday/Special Event Rate	+\$100/site

Important Information on Group Camping

- Group areas have a portable toilet, fire pit and shared pavilion. Each campsite has 20/30 amp electricity on-site and water nearby (no hose splitters).
- Group areas receive two overnight passes per campsite. Additional overnight guests pay a \$10 fee and must park in the designated overnight parking area.
- A down payment of \$250/group site (\$350 if holiday/special event week) is due at the time of reservation. Balance is due no later than 30 days prior to the reservation start.
- Changes to reservation dates/sites after a reservation has been made will incur a \$10 change fee.
- Cancellations made 90 days or more prior to reservation start: Camping fees will be refunded. Cancellations less than 90 days prior to reservation start: Down payment is forfeited. Cancellations made less than 30 days prior to reservation start: Down payment and 50% of the additional fees collected are forfeited. **A \$10 fee is assessed for all cancelled reservations.**
- Wood can be purchased/picked up at contact station and store, when open.

Youth Camping Fees/Information

Available to scout, school or church groups. Rate is \$50/night/group area, due at time of booking. Additional fee of \$5/person/night. Cancellation requires 14 days advance notice. Rate not available for holidays/special events. Typically an off-season rental.

Camping Cabins/ Yurt Fees

All camping cabins and yurts now feature air/heating units!

Cabins/yurts require \$50 deposit by credit card at check-in. This will be refunded if no damage is found upon inspection at check out.

Cabin #1 **\$87/night**
2-person cabin with one queen-size bed

Cabin #2 - #4 **\$87/night**
4-person cabin with two sets of twin-sized bunk beds

Cabin #5 - #8 **\$125/night**
6-person cabin with one queen size bed and two sets of twin-size bunk beds.

Yurt #1 (Accessible Yurt) and Yurts #2 - #4 **\$135/night**
6-person Yurts feature one queen-size bed and two sets of twin-size bunk beds.

Cabin/Yurt - Holiday/Special Event Rates **+\$5/night**

Important Information on Cabins/Yurts

- Please note these are camping cabins and yurts. Indoor plumbing is not available.
- Two-day stay required (holidays, three nights).
- Guest reservations are limited to three per household
- Check-in time is 3 p.m. (no check-in after 9 p.m.) Check-out time is 1 p.m.
- Please notify staff a half hour prior to your check-out time by phone so inspections can be made.
- Changes to reservation dates/sites after a reservation has been made will incur a \$10 change fee. No modifications can be made to a reservation after 3 p.m. on the day of the reservation.
- Cancellations on reservations made seven or more days prior to the start of the reservations will be refunded, minus a \$10 fee. Cancellations made less than seven days prior to the start of reservation and before check-in time on the day of the reservation will be refunded 50% minus a \$10 fee. Day of reservation 3 p.m. on, no refund.



What to bring and what to leave behind for cabins/yurts



All cabins and yurts include

- Parking for two vehicles
- Air/heating unit
- Small refrigerator
- Table and chairs
- Small microwave
- Small cart for storage
- K-cup pod coffee/tea maker
- Electricity
- Outdoor grill
- Picnic table and fire pit
- Water nearby

Not allowed in cabins or yurts

- Except for service animals, no animals are allowed in or to remain overnight outside of, cabins/yurts
- Smoking of any kind or cooking with open flames is not permitted inside
- Gas or portable heaters are not allowed
- Tents are not allowed at cabin/yurt sites
- Candles or fire of any kind

Guest must supply

- Linens for all beds
- Cooking utensils and all needed supplies



Activities and Amenities

Bike/Boat Rentals

- \$5/per half hour for bikes, kayaks, pedal boats and paddleboards.
- \$20/day for rowboat
- Adults are required to sign out rentals, current hours posted at rental house.
- Offered during peak season and based on weather/staff.

Beach, Arcade & Skate Park

- **New location** - Arcade is now located by the beach/camp store!
- Open daily, 8 a.m.-9 p.m.

Mini Golf

- Open daily, bring your own putter and golf ball. No Charge.
- Golf balls available for purchase at course (4 quarters), at the Contact Station and at the Camp Store for \$1-\$2.



Camp Store

- Located by the beach. Find necessities, souvenirs, ice cream, toys & more!
- Hours adjusted based on season.

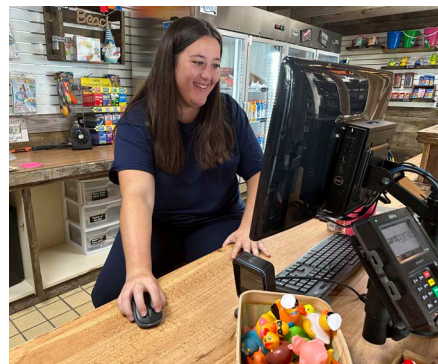


Free Recreation Options

- Basketball court, bike skills course, skate park, bocce ball court, GAGA ball pit, ring toss game, shuffleboard court, Thread Creek Trail and sand volleyball court.
- Open daily, see above map for locations.

Fishing

- Shore and dock fishing on Stewart Lake.
- Purchase bait during open hours at the camp store or the contact station.
- State fishing license for 17 & older required, park does not sell licenses.
- Accessible dock by Island Parking Lot.



For Your Camping Convenience

Firewood	\$7 or four for \$25
Fire-starters	\$2 or two for \$3
Colorful fire	\$3
Ice	\$3
Bait	\$4

Above items are available at the contact station and store during open hours

Dump Station

Available for on-site campers only, no fee. Located at the front of the campground.

Honey Wagon - Tuesdays only

Must sign up at the contact station by 7 p.m. on Monday and be at site during service. Service is done by a contracted company. \$30 for all tanks (gray and black). Camper must be on site during service. *Please note: holidays may change day.*

Free Little Libraries Locations:

Activity Center, laundry and Bathroom A. We hope you can take and share a book.

Wifi - New in 2025!

Available for purchase from an independent vendor.

WiFi
New in
2025!

Showers - Free and open 24 hours.

Laundry - Open daily 8 a.m.-9 p.m. and is located by the Pines Restroom, takes quarters.

Campground Mowing Schedule

- Monday: Sections D, E, F/sites 113-267
- Tuesday: Group areas and activity field
- Wednesday: Sections A and B/sites 1-52
- Thursday: Section C/sites 53-112

Remember to remove lawn decorations, dog leash hooks, etc. to prevent damage. Subject to change due to weather/staff availability.



Tips for Happy Campers

Check-in/Check-out

- Check-in time is 3 p.m. (No later than 9 p.m.) Early check-in based on availability, call ahead.
- Check-out is 1 p.m.
- When checking out of cabin/yurt, notify contact station 30 min. prior to leaving for inspection.

For Your Safety

- Children under 12 may not be left alone in the campground.
- Birds and other wildlife should not be fed at any time.
- Cats and dogs are welcome (except at cabins/yurts) but must be kept indoors or on a six-foot leash. **Animals must not be left unattended at campsites, even if they are inside a tent or camper.** Owners or caretakers must pick up all dog droppings.
- Hammocks are permitted but may not be permanently attached to trees or campground fixtures.
- No portable fire pits permitted.
- Clotheslines must be removed at sundown.
- Please refer to the Oakland County Parks and Recreation Rules and Regulations (available on-line or at the contact station) for a complete listing of park and campground rules.



Scan to view
all Oakland
County Parks +
Campground Rules

General Reminders

- Quiet hours are 11 p.m.-7 a.m.
- Call the contact station at 248-634-9811 with any issues, including noisy neighbors. **If the contact station is closed, please call the Oakland County Sheriff Dispatch at 248-858-4950.**
- Visitors are welcome from 8 a.m.-10 p.m.
- Campsites are limited to immediate family or up to four unrelated persons ages 18 or older. **Maximum of two tents or one camper and one tent per site.**
- When parking, **the tongue of the camping trailer hitch must face the road but not go into the road.**
- Only two vehicles allowed per site.
- If trailers do not fit into site parking pads, they must be moved to the Day Use/Overnight Vehicle lot with overnight permit. See the contact station for details.
- Fire pits are for **firewood only**. Do not put trash, pallets, brush or limbs into the fire pits.
- All trash must be disposed of in proper receptacles. **Dumpsters are located by the dump station, Section C restroom building, day use parking lot, behind the mini golf course and beside the camp store restroom building. On-site trash pickup is not provided.**
- All gray/wastewater must be disposed of at the designated dump station(s) per the Oakland County Health Department Sanitary Code Section 4.1.
- Portable waste tanks must only be connected to a camping unit while in the process of emptying on-board holding tanks. Campers must be present and in view of portable tanks during the emptying process.
- **No hose splitters** can be attached to any water spigot or hose per the Oakland County Health Division.
- Golf carts other than those used due to a disability are prohibited for use in campgrounds, including the campground roads and pathways. Please stop at the contact station to get a pass for any eligible carts.
- All vehicles in park must be street legal.
- Scheduled mowing schedule is inside this guide. Remove lawn decorations, dog leashes, hooks, etc. to prevent damage.
- Refrigerators and other large electrical appliances are not permitted outside of trailers.
- Mail/packages may not be sent to the campground.
- Please do not cut or damage trees.

Picnic Pavilion Rental Information

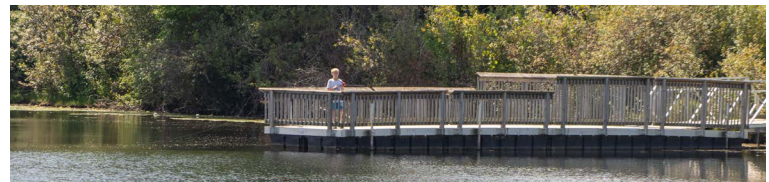
Pavilion use requires a reservation. Pavilions can be reserved 11 months in advance by calling 248-634-9811. Fees are paid at the time of reservation and require completing a facility rental form. Please note that pavilions are located across water and requires host and guest to walk a short distance from parking lot and over a bridge. Portable toilets are located by lot and not on island.

Paradise Island Pavilion

- Max. capacity 100 people
- Mon.-Thurs. \$150 (\$125 Oakland County Resident)
- Weekends & Holidays \$300 (\$250 OC Resident)
- Electricity

Mathews Island Pavilion

- Max. capacity 50 people
- Mon.-Thurs. \$125 (\$100 OC Resident)
- Weekends & Holidays \$250 (\$200 OC Resident)
- No Electricity



Campground Recreation

Detailed recreation schedules are available Thursday evenings at the Contact Station. Events are subject to change.

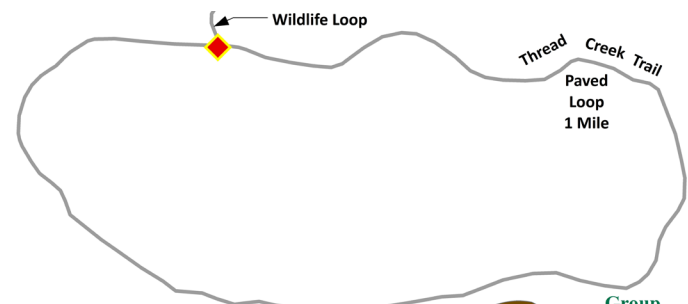
Activity Bags are free for campers and can be checked out at the contact station by an adult. Bags contain puzzles, games, books and other fun items. A day and night hiker bag is available, as well as ping pong and a spike ball kit.

May 23-25	Memorial Day Weekend
May 31	Recreation Activities
June 14	Celebrate Parents
June 21	Lake Life
June 28	Animal Antics
July 3-5	Star Spangled Weekend
July 12	Dig It
July 19*	Christmas in July
July 26	Mystery Madness
Aug. 2	Splish, Splash, Splat
Aug. 9	Carnival Fun
Aug. 16	Get Out & Go
Aug. 23	Recreation Activities
Aug. 29-31	Labor Day Weekend
Sept. 12-13*	Groveland Spooktacular 1
Sept. 19-20*	Groveland Spooktacular 2

*Denotes a site decorating contest - prizes!

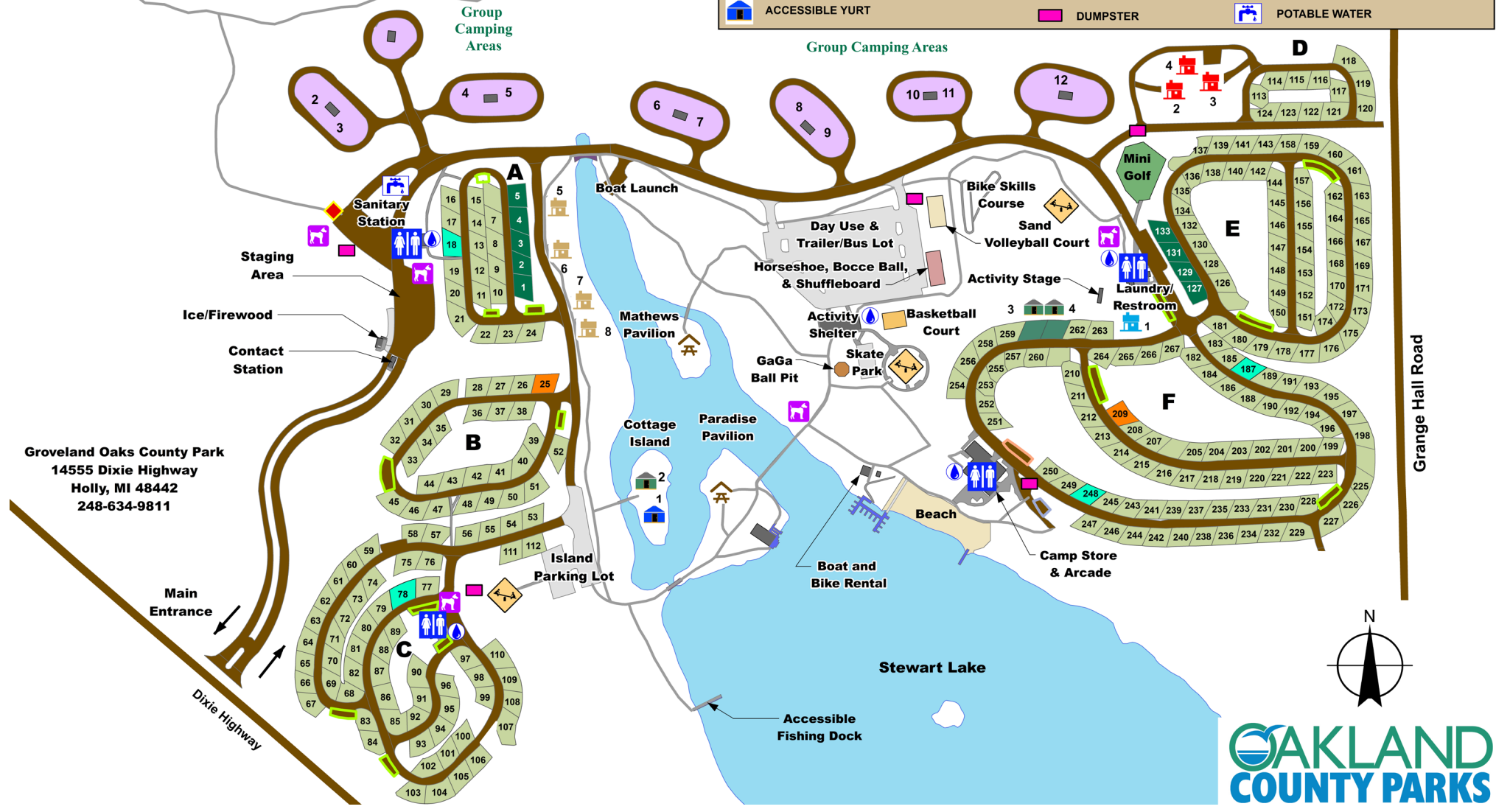
Look for our train times, \$3 a rider.





GROVELAND OAKS COUNTY PARK CAMPGROUND

FULL HOOK-UP SITES - SECTIONS: A, B & C	6 PERSON CABIN	VISITOR PARKING 8 am - 10 pm Only
WATER & ELECTRIC SITES - SECTIONS: D, E & F	4 PERSON CABIN	15 MINUTE PARKING ONLY
RESERVABLE SITE	2 PERSON CABIN	OAKLAND COUNTY SHERIFF PARKING
RESERVABLE PULL THROUGH SITE	PAVILION	TRAIL
CAMPGROUND HOST SITE	PLAYGROUND	TRAIL HEAD
ADA SITES - 18, 78, 187, & 248	ROAD	DOG WASTE BAG DISPENSER
RESTROOM	DUMPSTER	WATER BOTTLE REFILL STATION
YURT		POTABLE WATER
ACCESSIBLE YURT		



Groveland Oaks County Park
14555 Dixie Highway
Holly, MI 48442
248-634-9811

