

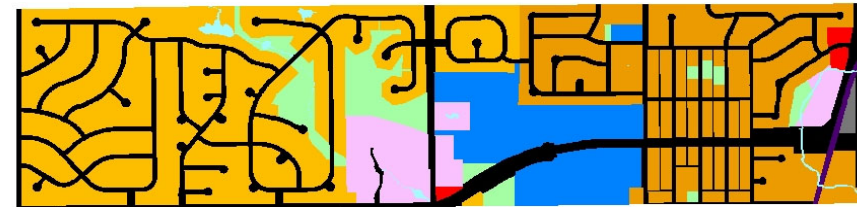
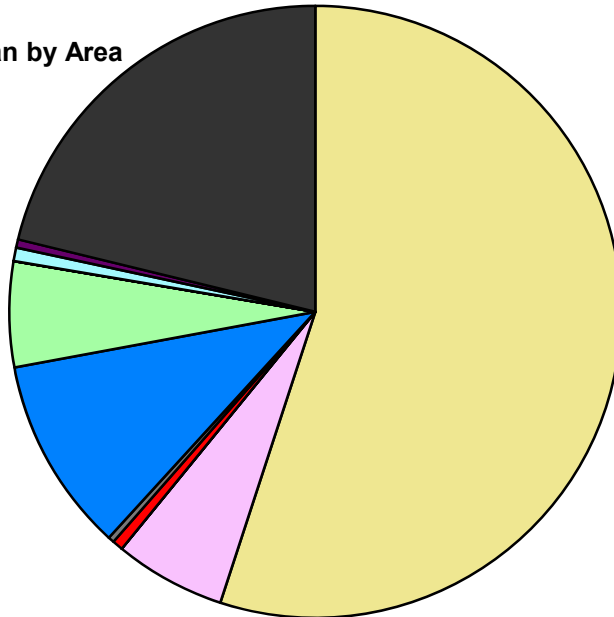
## City of Northville Composite Master Plan Statistics

Land Use	Area (ac.)	Area (%)
Single Family Residential	352.6	55.0%
Multiple Family	37.7	5.9%
Mobile Home Park		
Commercial/Office	3.7	0.6%
Industrial	2.0	0.3%
Public/Institutional	66.1	10.3%
Recreation/Conservation	35.7	5.6%
Mixed Use		
Reclamation Plan		
Water	4.5	0.7%
Railroad Right-of-Way	2.8	0.4%
Road Right-of-Way	135.8	21.2%
<b>Total</b>	<b>640.9</b>	<b>100.0%</b>

Single Family by Lot Size	Area (ac.)	Area (%)
10 acres or greater		
5 to 9.9 acres		
2.5 to 4.9 acres		
1 to 2.4 acres		
14,000 to 43,559 sq. ft.		
8,000 to 13,999 sq. ft.	218.1	61.9%
Less than 8,000 sq. ft.	134.5	38.1%
<b>Single Family Sub-total</b>	<b>352.6</b>	<b>100.0%</b>

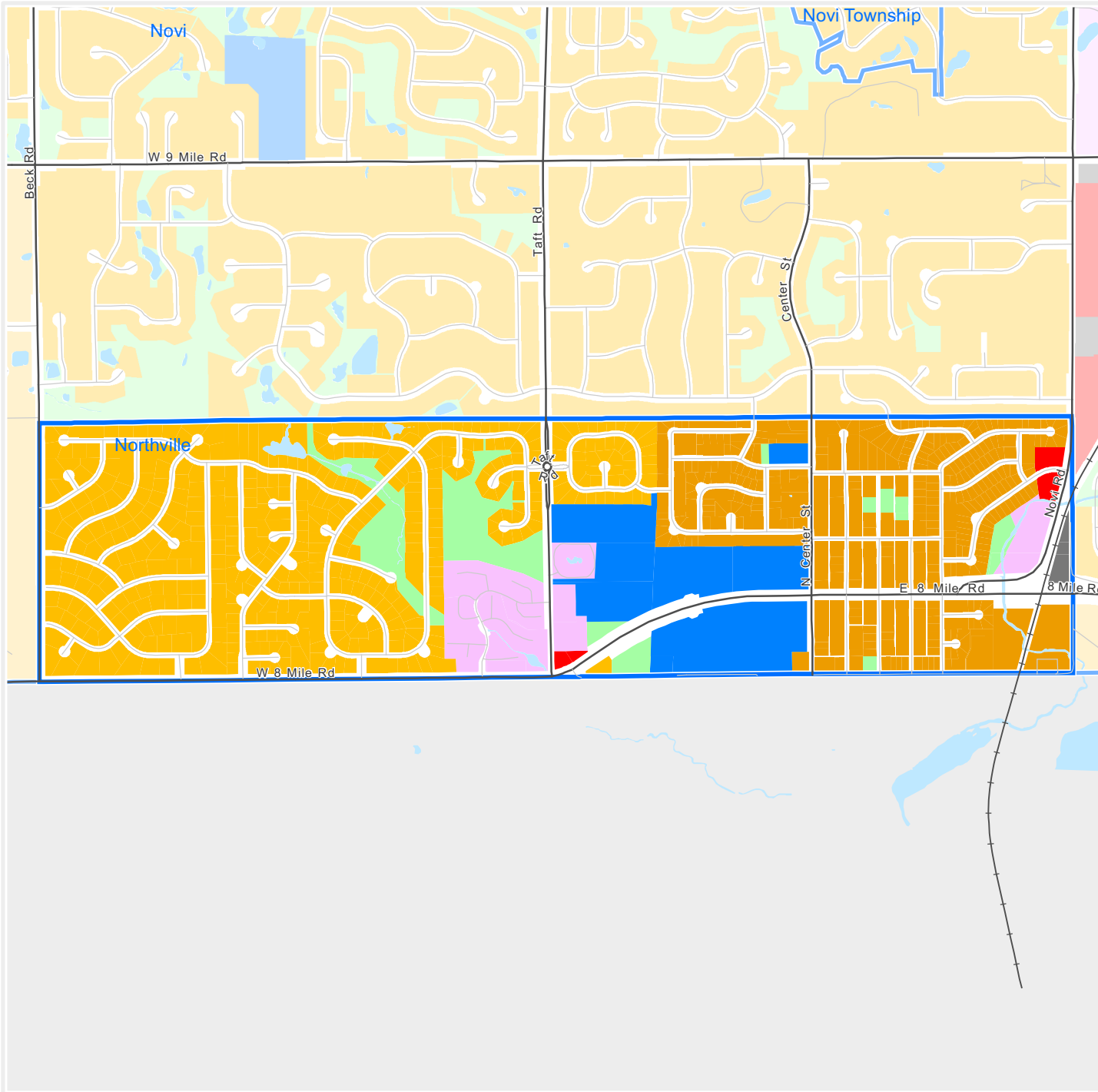
### Composite Master Plan by Area

- Single Family Residential
- Multiple Family
- Mobile Home Park
- Commercial/Office
- Industrial
- Public/Institutional
- Recreation/Conservation
- Mixed Use
- Reclamation Plan
- Water
- Railroad Right-of-Way
- Road Right-of-Way



For more information, maps, or questions about this data, please contact the Oakland County One Stop Shop at (248) 858-0720.

These statistics represent a generalized future land use based on each community's master plan. Right-of-way and water figures are based on existing conditions.



**OAKLAND**  
COUNTY MICHIGAN  
Economic Development & Community Affairs  
PLANNING & ECONOMIC DEVELOPMENT SERVICES  
Executive Office Building  
2100 Pontiac Lake Road, Bldg. 41W  
Waterford, MI 48328-0412  
248.858.0720  
www.oakgov.com/luz

## Composite Master Plan

### City of Northville

- Legend**
- Single Family, 10 acres or greater
  - Single Family, 5 to 9.9 acres
  - Single Family, 2.5 to 4.9 acres
  - Single Family, 1 to 2.4 acres
  - Single Family, 14,000 to 43,559 sq. ft.
  - Single Family, 8,000 to 13,999 sq. ft.
  - Single Family, Less than 8,000 sq. ft.
  - Multiple Family Residential
  - Mobile Home Park
  - Commercial/Office
  - Industrial
  - Public/Institutional
  - Recreation/Conservation
  - Mixed Use
  - Reclamation Plan

This map represents a generalized future land use based on each community's master plan.

1 inch = 1,509 feet

Map created on June 1, 2019