

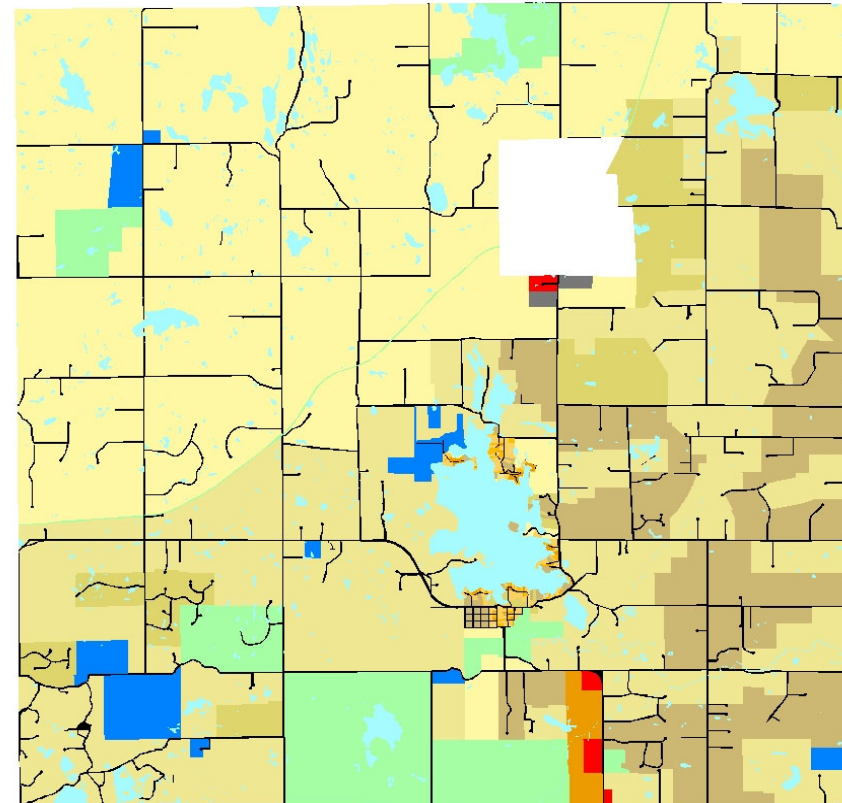
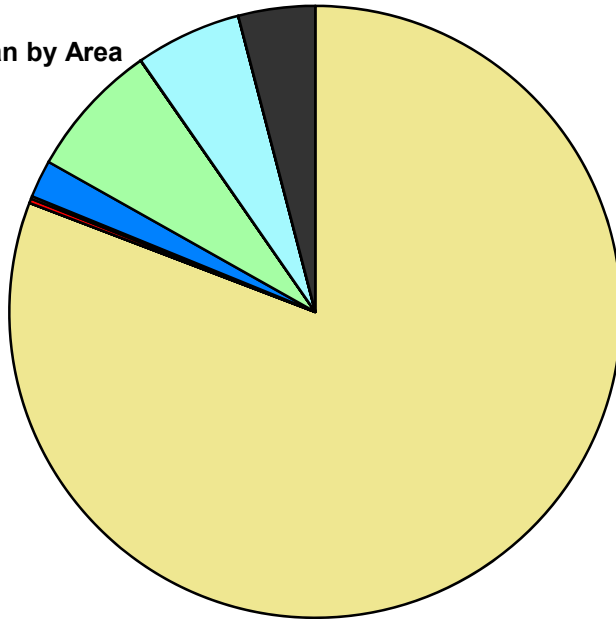
## Township of Addison Composite Master Plan Statistics

Land Use	Area (ac.)	Area (%)
Single Family Residential	18,413.0	80.8%
Multiple Family		
Mobile Home Park		
Commercial/Office	54.5	0.2%
Industrial	31.0	0.1%
Public/Institutional	453.0	2.0%
Recreation/Conservation	1,637.6	7.2%
Mixed Use		
Reclamation Plan		
Water	1,279.3	5.6%
Railroad Right-of-Way		
Road Right-of-Way	922.3	4.0%
<b>Total</b>	<b>22,790.7</b>	<b>100.0%</b>

Single Family by Lot Size	Area (ac.)	Area (%)
10 acres or greater	8,078.0	43.9%
5 to 9.9 acres	6,436.8	35.0%
2.5 to 4.9 acres	1,082.5	5.9%
1 to 2.4 acres	2,597.2	14.1%
14,000 to 43,559 sq. ft.	58.0	0.3%
8,000 to 13,999 sq. ft.	17.6	0.1%
Less than 8,000 sq. ft.	143.0	0.8%
<b>Single Family Sub-total</b>	<b>18,413.0</b>	<b>100.0%</b>

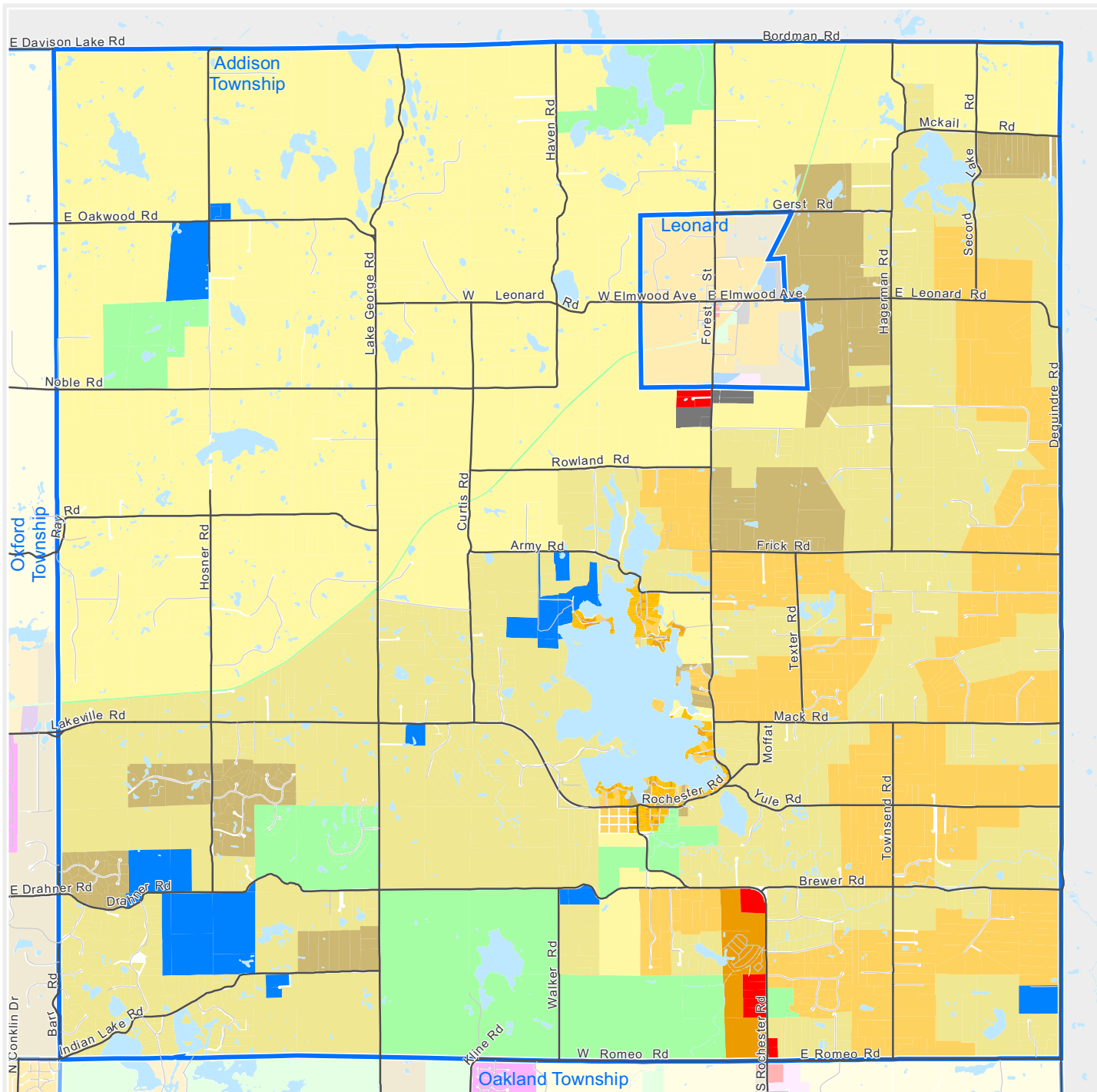
**Composite Master Plan by Area**

- Single Family Residential
- Multiple Family
- Mobile Home Park
- Commercial/Office
- Industrial
- Public/Institutional
- Recreation/Conservation
- Mixed Use
- Reclamation Plan
- Water
- Railroad Right-of-Way
- Road Right-of-Way



For more information, maps, or questions about this data, please contact the Oakland County One Stop Shop at (248) 858-0720.

These statistics represent a generalized future land use based on each community's master plan. Right-of-way and water figures are based on existing conditions.



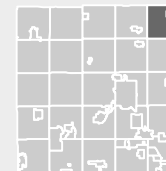
The information provided herewith has been compiled from recorded deeds, plats, tax maps, surveys and other public records. It is not a legally recorded map or survey and is not intended to be used as one. Users should consult the information sources mentioned above when questions arise.



Economic Development & Community Affairs

#### PLANNING & ECONOMIC DEVELOPMENT SERVICES

Executive Office Building  
2100 Pontiac Lake Road, Bldg. 41W  
Waterford, MI 48328-0412  
248.858.0720  
[www.oakgov.com/luz](http://www.oakgov.com/luz)



## Composite Master Plan *Township of Addison*

### Legend

- Single Family, 10 acres or greater
- Single Family, 5 to 9.9 acres
- Single Family, 2.5 to 4.9 acres
- Single Family, 1 to 2.4 acres
- Single Family, 14,000 to 43,559 sq. ft.
- Single Family, 8,000 to 13,999 sq. ft.
- Single Family, Less than 8,000 sq. ft.
- Multiple Family Residential
- Mobile Home Park
- Commercial/Office
- Industrial
- Public/Institutional
- Recreation/Conservation
- Mixed Use
- Reclamation Plan

This map represents a generalized future land use based on each community's master plan.



1 inch = 4,668 feet

Map created on June 1, 2019