

## Township of Bloomfield

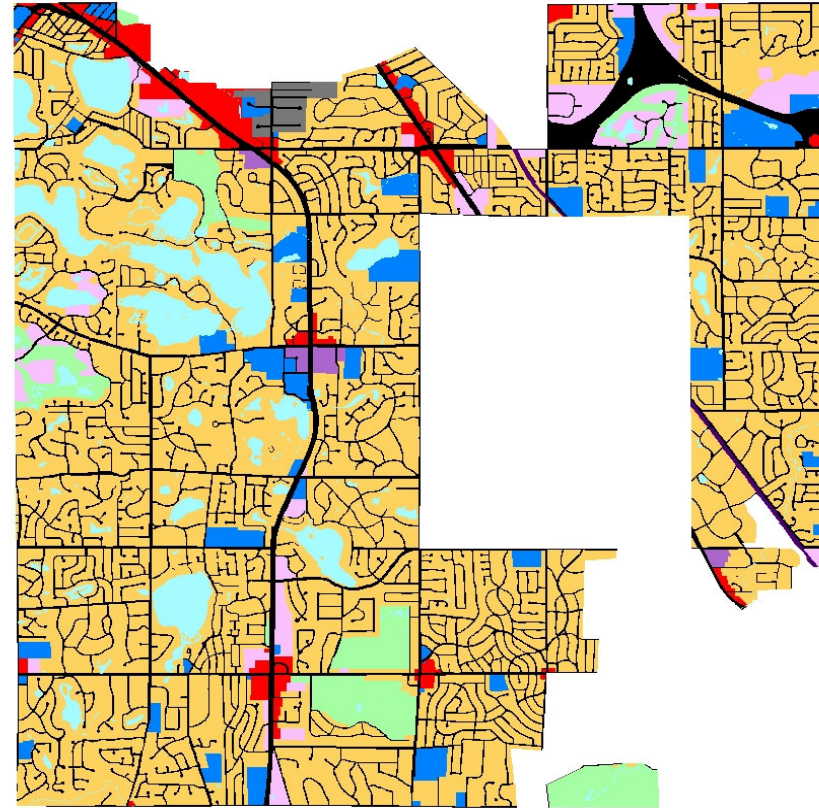
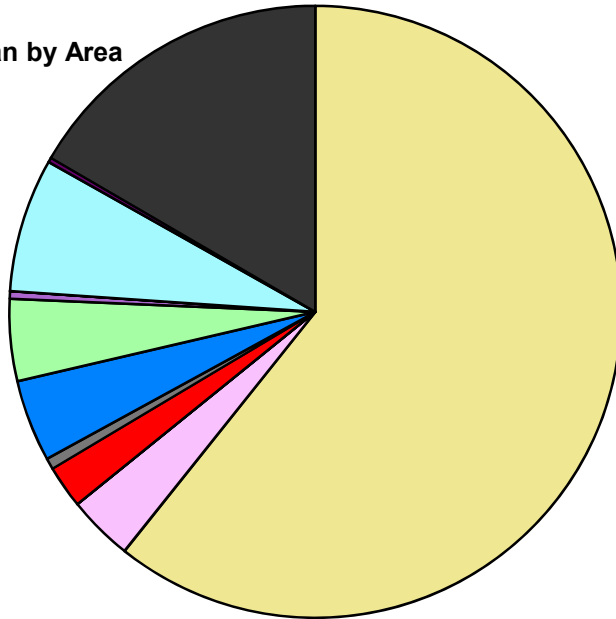
### Composite Master Plan Statistics

Land Use	Area (ac.)	Area (%)
Single Family Residential	10,094.9	60.7%
Multiple Family	576.7	3.5%
Mobile Home Park		
Commercial/Office	374.1	2.3%
Industrial	96.8	0.6%
Public/Institutional	721.1	4.3%
Recreation/Conservation	720.6	4.3%
Mixed Use	64.9	0.4%
Reclamation Plan		
Water	1,174.3	7.1%
Railroad Right-of-Way	41.1	0.2%
Road Right-of-Way	2,761.4	16.6%
<b>Total</b>	<b>16,625.9</b>	<b>100.0%</b>

Single Family by Lot Size	Area (ac.)	Area (%)
10 acres or greater		
5 to 9.9 acres		
2.5 to 4.9 acres		
1 to 2.4 acres		
14,000 to 43,559 sq. ft.	10,094.9	100.0%
8,000 to 13,999 sq. ft.		
Less than 8,000 sq. ft.		
<b>Single Family Sub-total</b>	<b>10,094.9</b>	<b>100.0%</b>

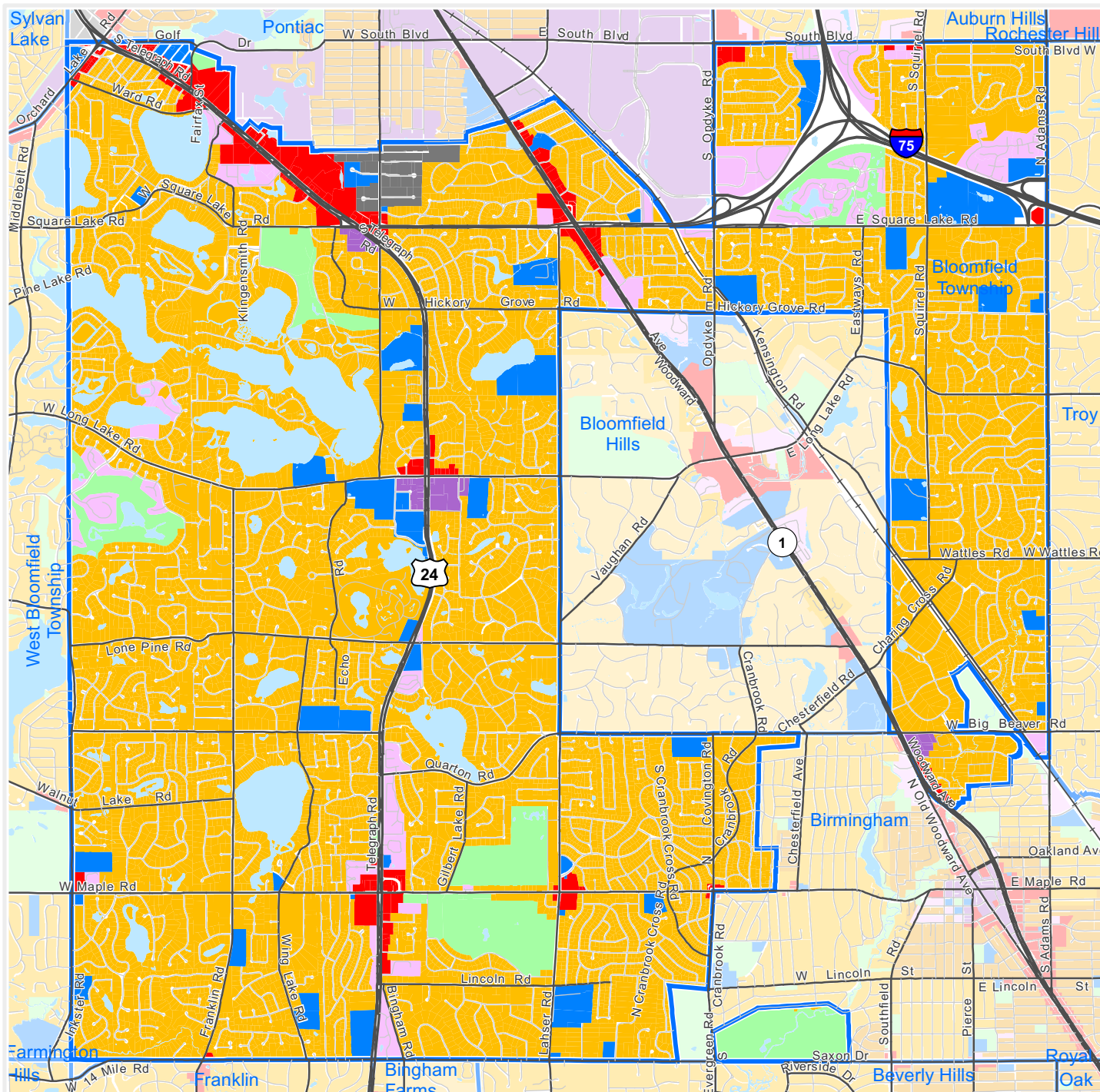
#### Composite Master Plan by Area

- Single Family Residential
- Multiple Family
- Mobile Home Park
- Commercial/Office
- Industrial
- Public/Institutional
- Recreation/Conservation
- Mixed Use
- Reclamation Plan
- Water
- Railroad Right-of-Way
- Road Right-of-Way



For more information, maps, or questions about this data, please contact the Oakland County One Stop Shop at (248) 858-0720.

These statistics represent a generalized future land use based on each community's master plan. Right-of-way and water figures are based on existing conditions.



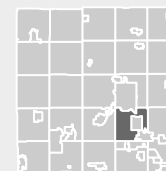
The information provided herewith has been compiled from recorded deeds, plats, tax maps, surveys and other public records. It is not a legally recorded map or survey and is not intended to be used as one. Users should consult the information sources mentioned above when questions arise.



Economic Development & Community Affairs

**PLANNING & ECONOMIC DEVELOPMENT SERVICES**

Executive Office Building  
2100 Pontiac Lake Road, Bldg. 41W  
Waterford, MI 48328-0412  
248.858.0720  
[www.oakgov.com/luz](http://www.oakgov.com/luz)



## Composite Master Plan

### *Township of Bloomfield*

#### Legend

- Single Family, 10 acres or greater
- Single Family, 5 to 9.9 acres
- Single Family, 2.5 to 4.9 acres
- Single Family, 1 to 2.4 acres
- Single Family, 14,000 to 43,559 sq. ft.
- Single Family, 8,000 to 13,999 sq. ft.
- Single Family, Less than 8,000 sq. ft.
- Multiple Family Residential
- Mobile Home Park
- Commercial/Office
- Industrial
- Public/Institutional
- Recreation/Conservation
- Mixed Use
- Reclamation Plan

This map represents a generalized future land use based on each community's master plan.



1 inch = 4,703 feet

Map created on June 1, 2019