

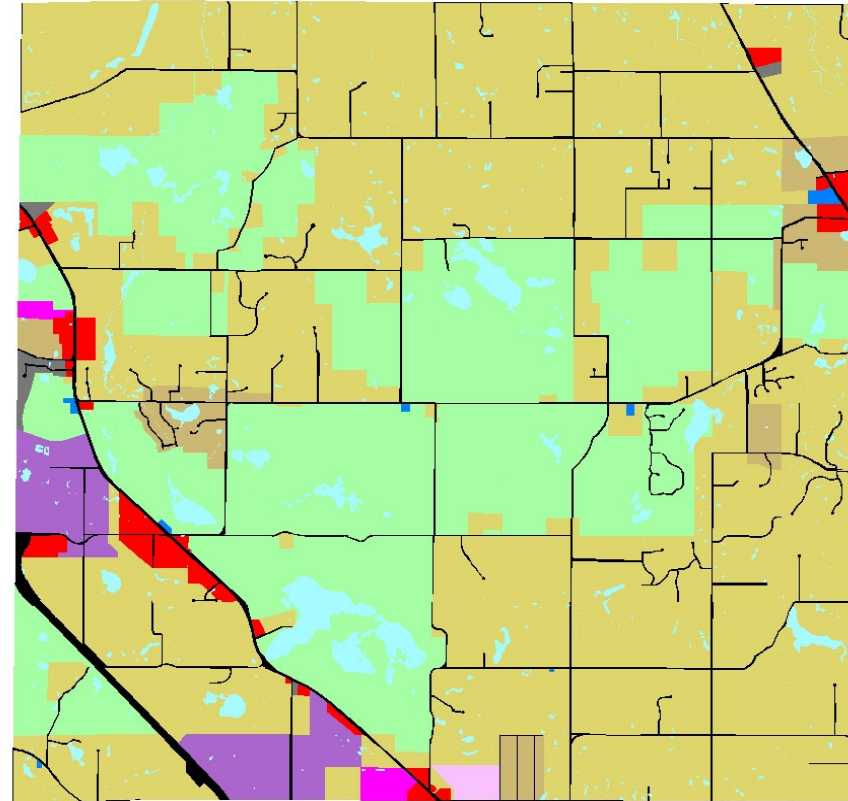
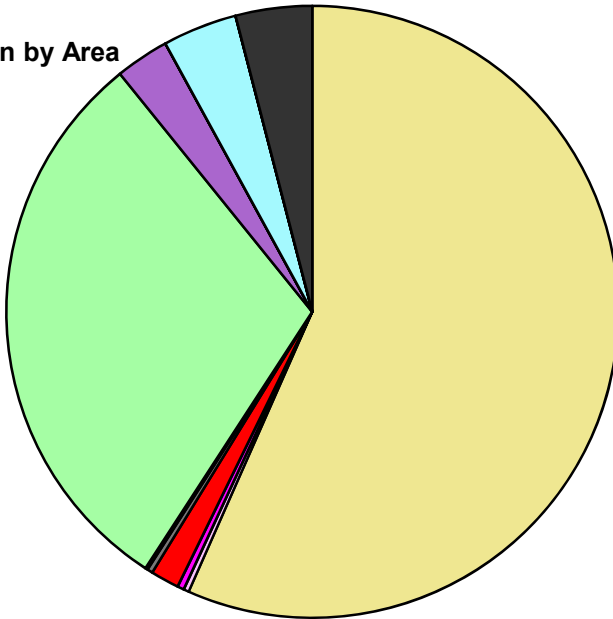
Township of Groveland Composite Master Plan Statistics

Land Use	Area (ac.)	Area (%)
Single Family Residential	13,055.8	56.6%
Multiple Family	65.6	0.3%
Mobile Home Park	81.0	0.4%
Commercial/Office	348.2	1.5%
Industrial	67.5	0.3%
Public/Institutional	28.8	0.1%
Recreation/Conservation	6,918.2	30.0%
Mixed Use	656.9	2.8%
Reclamation Plan		
Water	906.5	3.9%
Railroad Right-of-Way		
Road Right-of-Way	931.6	4.0%
Total	23,060.1	100.0%

Single Family by Lot Size	Area (ac.)	Area (%)
10 acres or greater		
5 to 9.9 acres		
2.5 to 4.9 acres	12,452.4	95.4%
1 to 2.4 acres	603.4	4.6%
14,000 to 43,559 sq. ft.		
8,000 to 13,999 sq. ft.		
Less than 8,000 sq. ft.		
Single Family Sub-total	13,055.8	100.0%

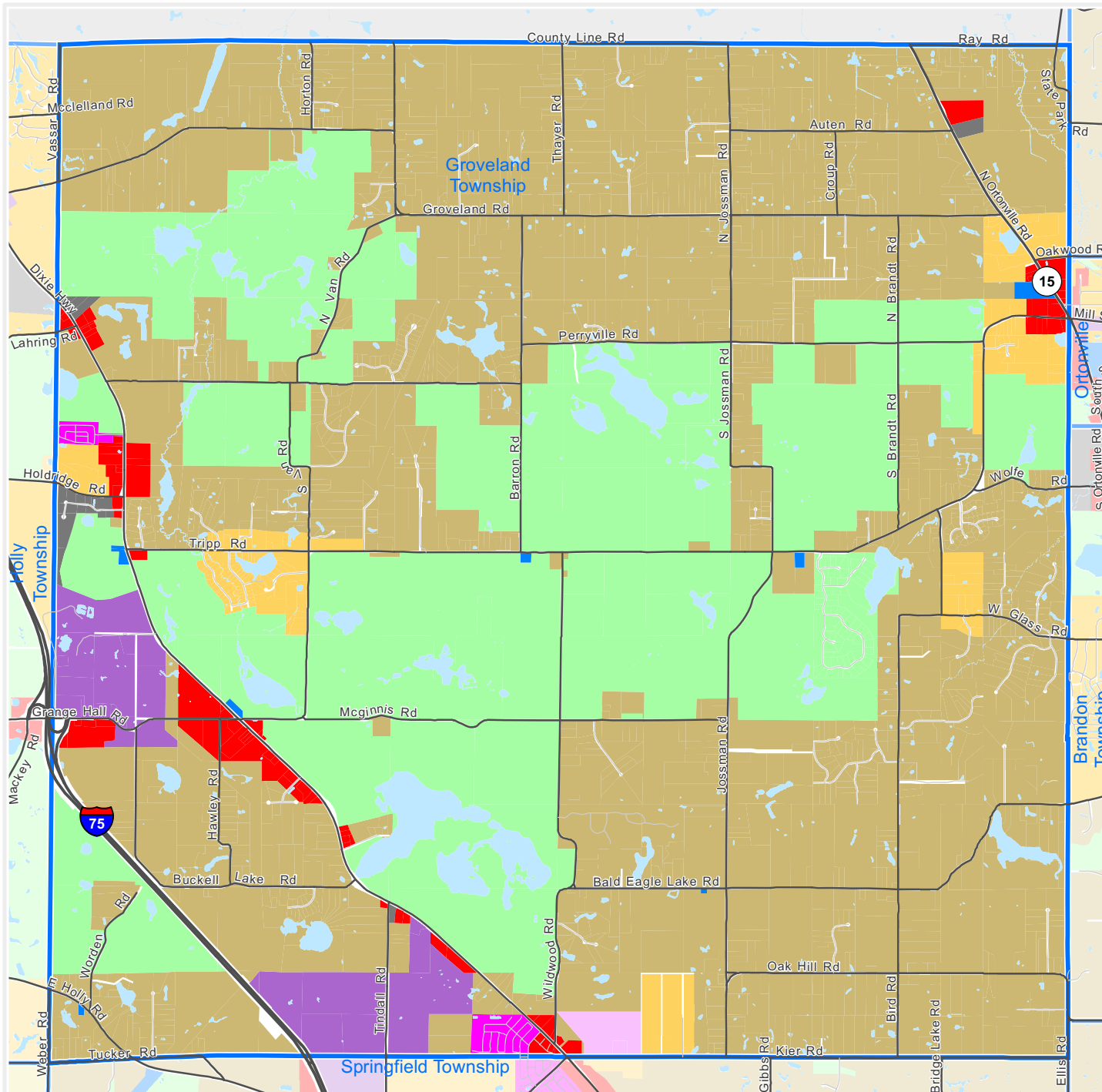
Composite Master Plan by Area

- Single Family Residential
- Multiple Family
- Mobile Home Park
- Commercial/Office
- Industrial
- Public/Institutional
- Recreation/Conservation
- Mixed Use
- Reclamation Plan
- Water
- Railroad Right-of-Way
- Road Right-of-Way



For more information, maps, or questions about this data, please contact the Oakland County One Stop Shop at (248) 858-0720.

These statistics represent a generalized future land use based on each community's master plan. Right-of-way and water figures are based on existing conditions.



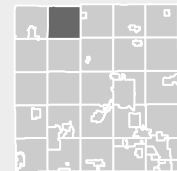
The information provided herewith has been compiled from recorded deeds, plats, tax maps, surveys and other public records. It is not a legally recorded map or survey and is not intended to be used as one. Users should consult the information sources mentioned above when questions arise.



Economic Development & Community Affairs

PLANNING & ECONOMIC DEVELOPMENT SERVICES

Executive Office Building
2100 Pontiac Lake Road, Bldg. 41W
Waterford, MI 48328-0412
248.858.0720
www.oakgov.com/luz

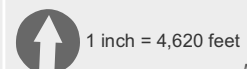


Composite Master Plan *Township of Groveland*

Legend

- Single Family, 10 acres or greater
- Single Family, 5 to 9.9 acres
- Single Family, 2.5 to 4.9 acres
- Single Family, 1 to 2.4 acres
- Single Family, 14,000 to 43,559 sq. ft.
- Single Family, 8,000 to 13,999 sq. ft.
- Single Family, Less than 8,000 sq. ft.
- Multiple Family Residential
- Mobile Home Park
- Commercial/Office
- Industrial
- Public/Institutional
- Recreation/Conservation
- Mixed Use
- Reclamation Plan

This map represents a generalized future land use based on each community's master plan.



Map created on June 1, 2019