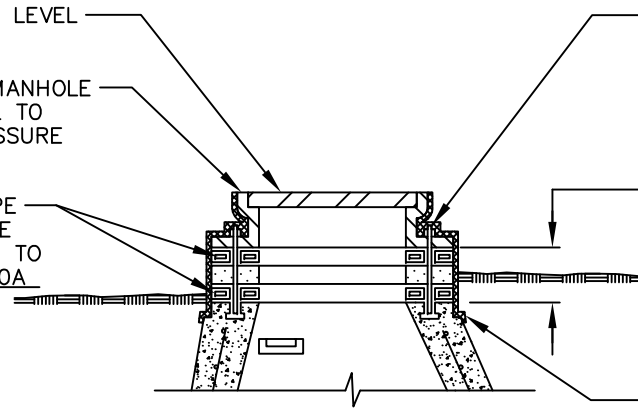


SEE STANDARD MANHOLE DRAWING
FOR OTHER MANHOLE DETAILS.

SET RIM A MINIMUM OF 12" ABOVE LEVEL
OF STANDING WATER.

BOLTED WATERPROOF CAST IRON MANHOLE
COVER WITH BOLTED FRAME EQUAL TO
EAST JORDAN NO. 1040 WITH PRESSURE
TIGHT COVER.

1"x1" BUTYL RUBBER FLEXIBLE ROPE
2 EACH COURSE (OUTSIDE & INSIDE
OF THREADED STUDS) CONFORMING TO
FEDERAL SPECIFICATION SS-SS-Z10A
AND AASHTO M-198



FOUR CADMIUM COATED 5/8" DIA. THREADED
STUDS WITH 3/4" x 2" x 1/8" THICK METAL
WASHER, 3/4" x 2" x 1/16" THICK NEOPRENE
SEALING WASHER AND NUTS.


3" OR 6" CONCRETE GRADE RINGS WITH
FINISH TOP AND BOTTOM SURFACES.
MAXIMUM ADJUSTMENT = 18".

ELASTOMERIC SEAL (PRESS SEAL GASKET CO.,
EASY STIK ALL WEATHER TROWELABLE BUTYL
BK-0069-1) SPREAD OVER ALL ADJUSTMENT
MATERIAL.

GEOMEMBRANE 6 MIL. PLASTIC COVER
OVER BUTYL.

ADJUSTMENT DETAIL MANHOLE TOPS WITHIN FLOOD PRONE AREAS

Profile Name: acad.cb
File Location: J:\Drain\Mapping\Unit\STANDARD\DETAILS\Other\Misc\Det\Sanitary\Gravity\Bldg\LeadRequirementsAndDetails\FloodAdj\H.dwg

REVISION BLOCK				 WATER RESOURCES COMMISSIONER <i>Jim Nash</i>				ADJUSTMENT DETAIL FOR MANHOLE TOPS WITHIN FLOOD PRONE AREAS			
Rev. No.:	Rev. By:	Rev. Date:	Description:					ONE PUBLIC WORKS DRIVE, BLDG 95 WEST WATERFORD, MICHIGAN 48328-1907		ORIG. DATE:	SHEET:
1	Iz	03/08/03	ADDED NEW TITLE BLOCK							07/25/02	
2	TLW	10/04/04	SET MAXIMUM ADJUSTMENT FROM 15" TO 18"								
3											
4											
								SCALE:		NONE	4 of 4