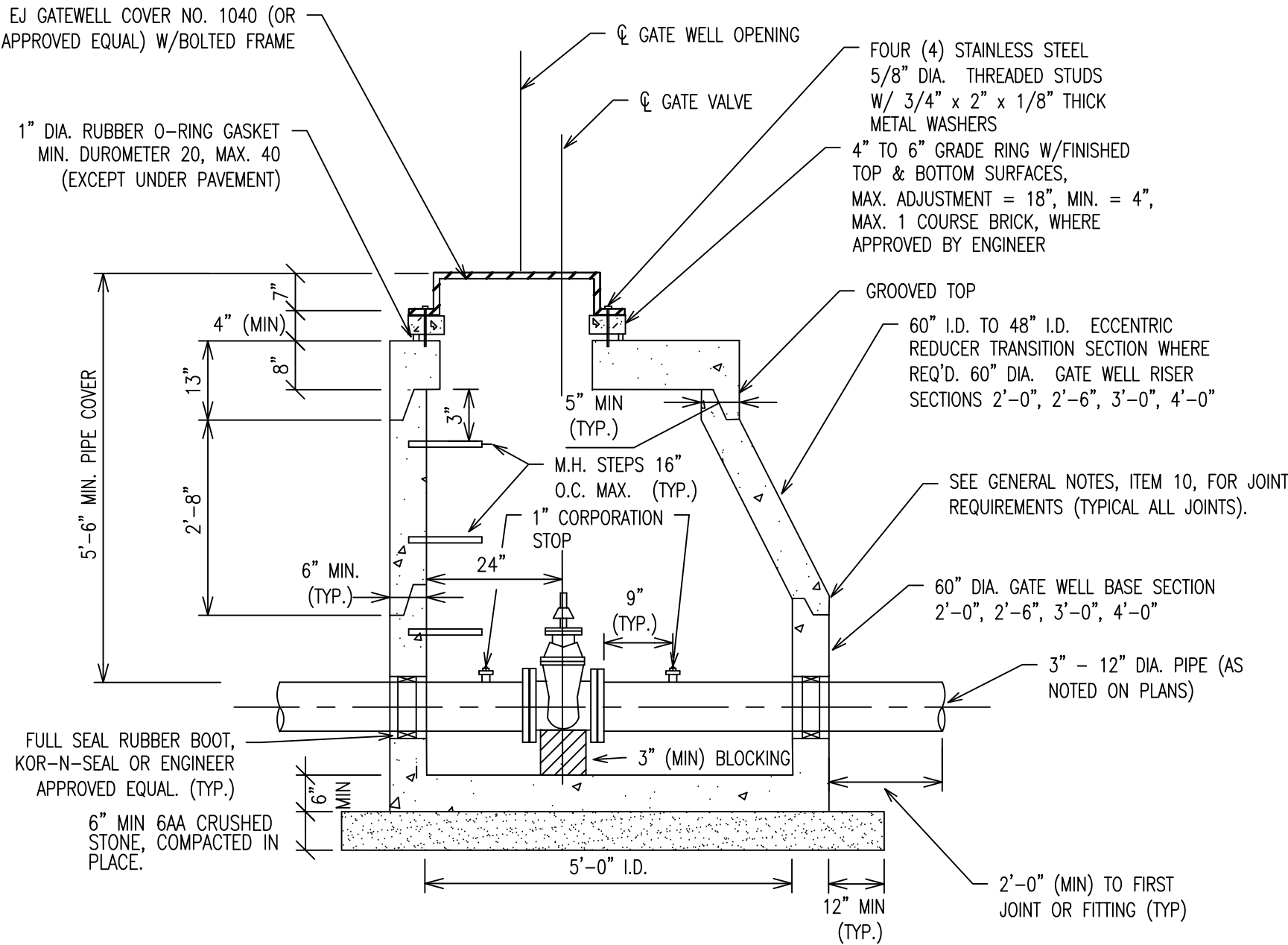
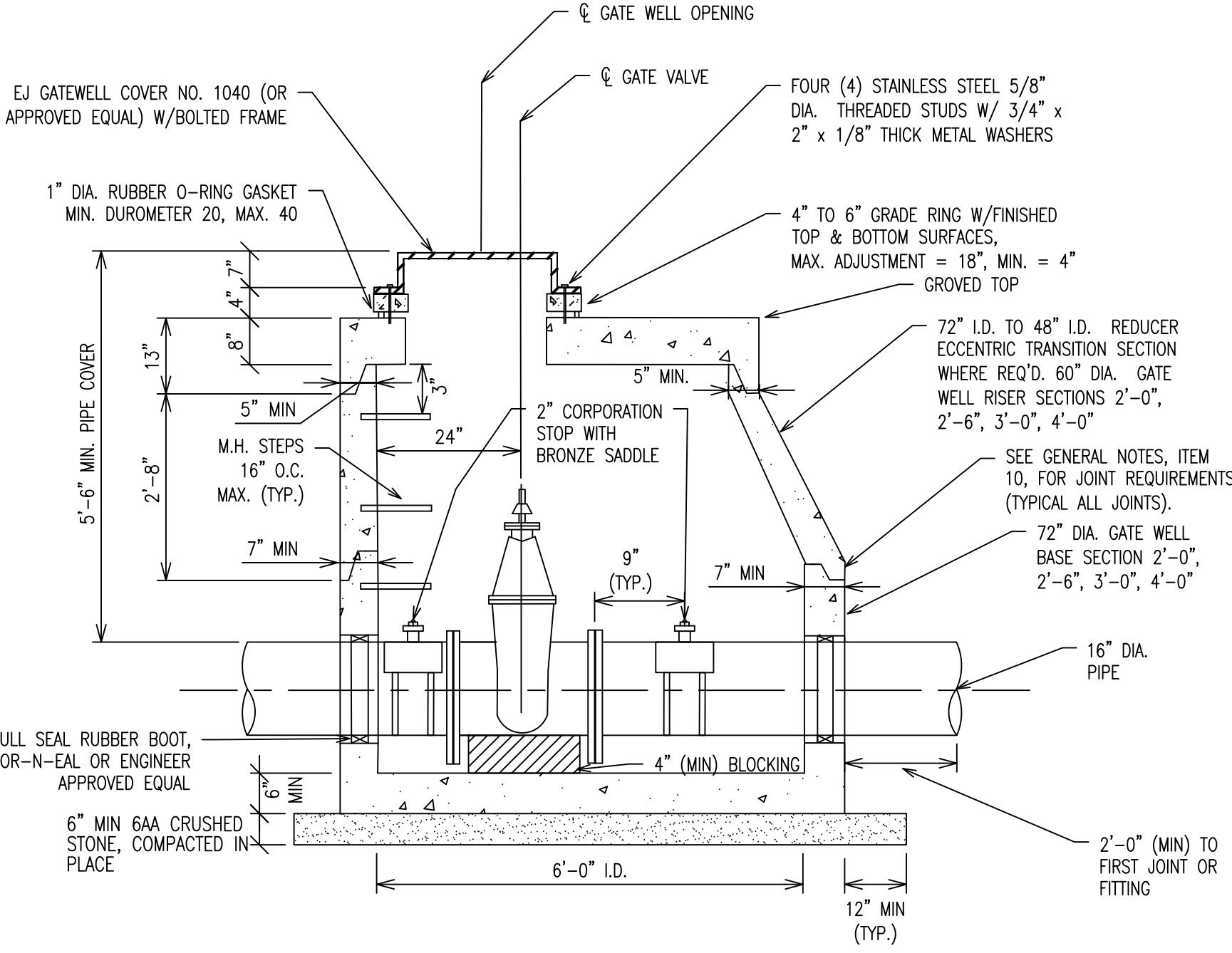


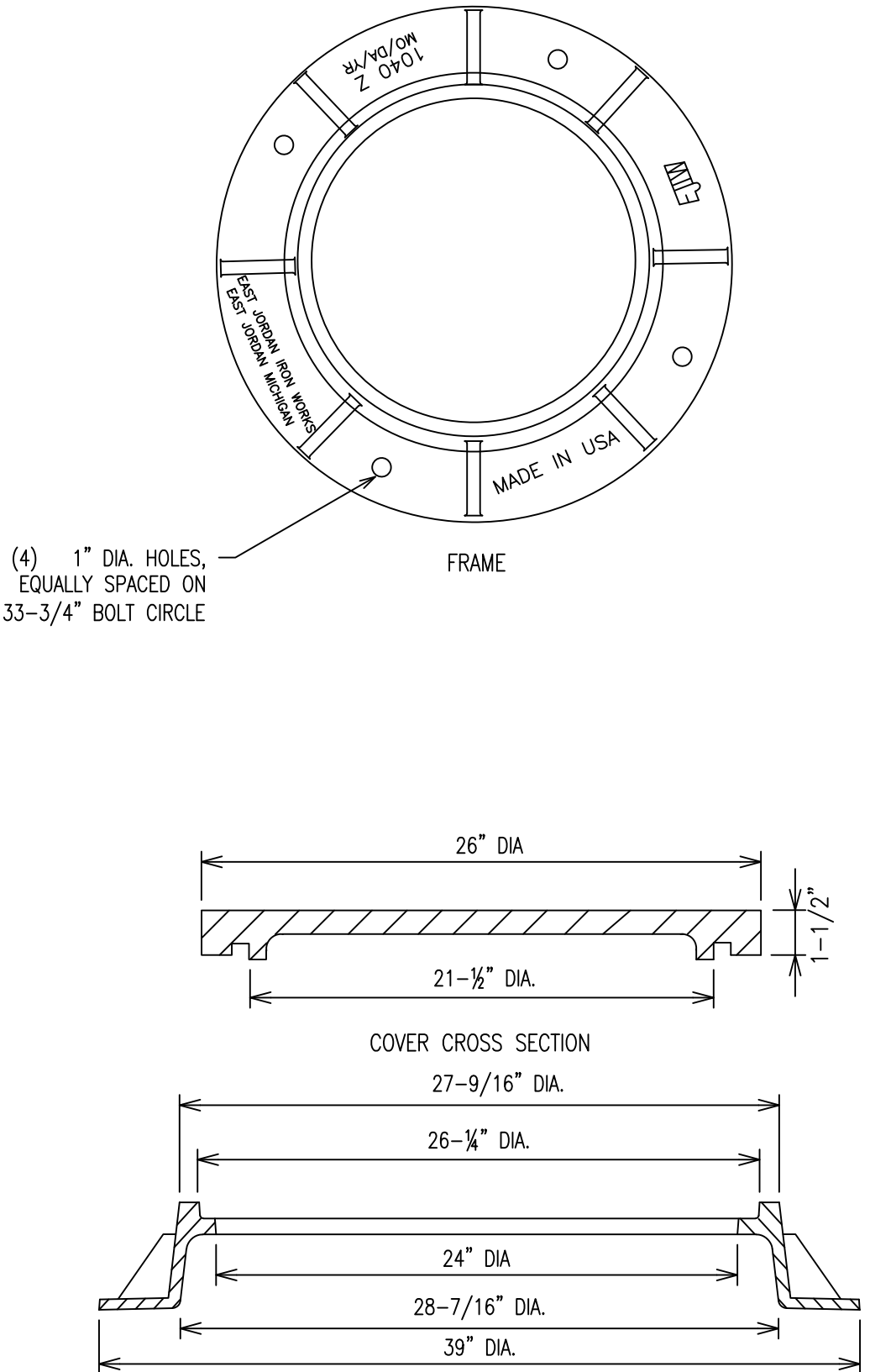
GATE VALVE & WELL DETAILS



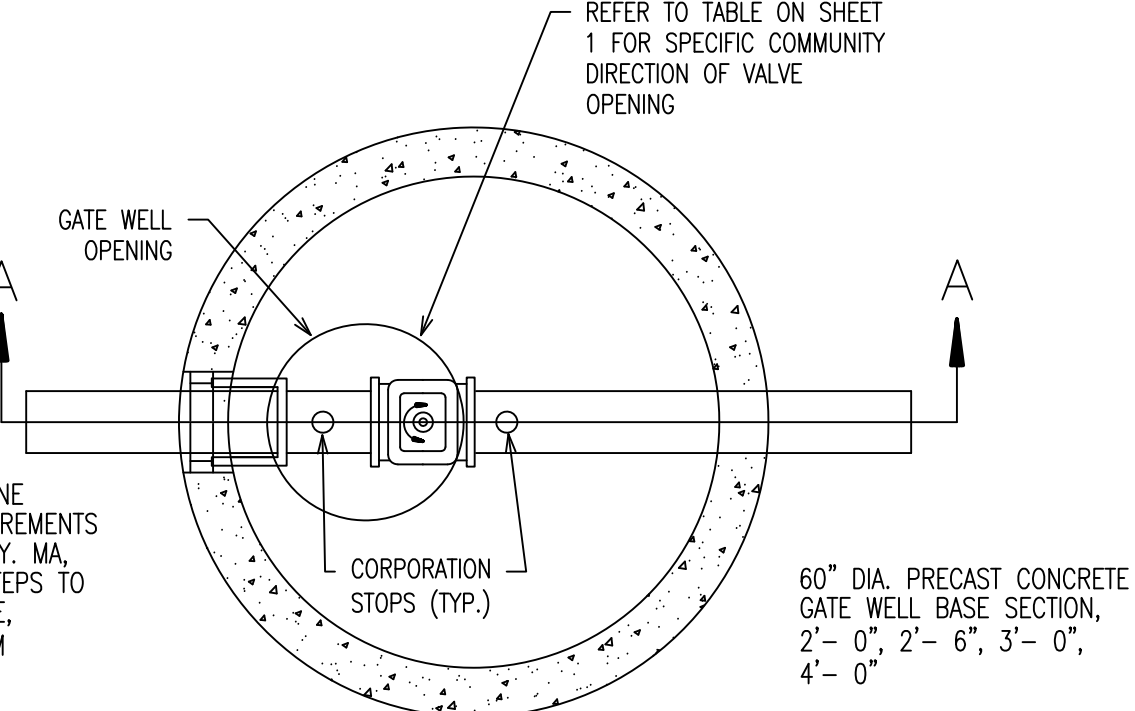
3" THRU 12" GATE WELL



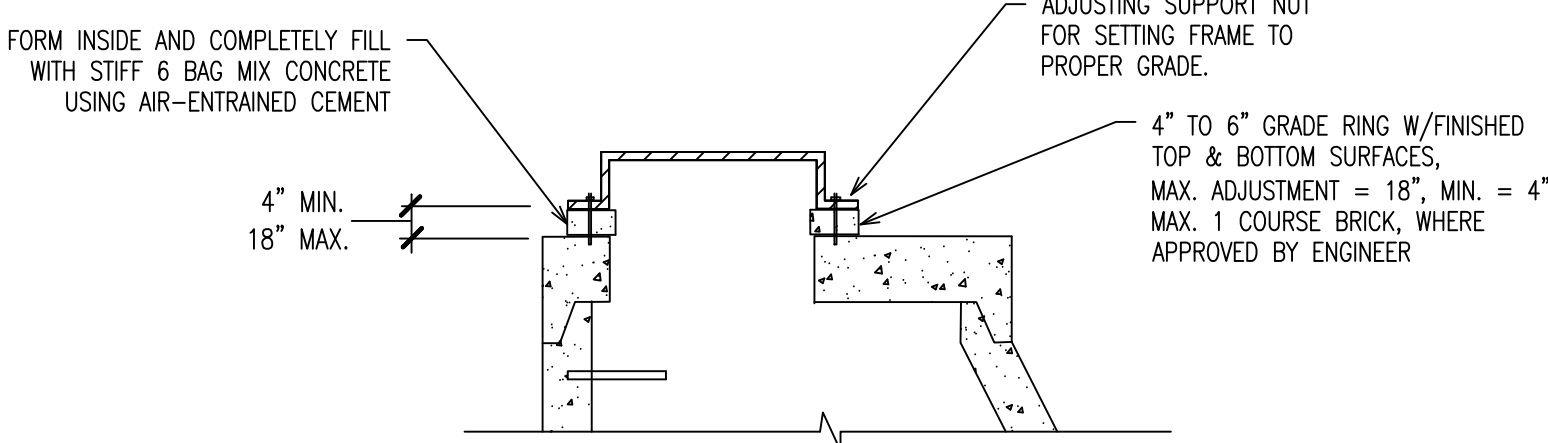
16" GATE WELL



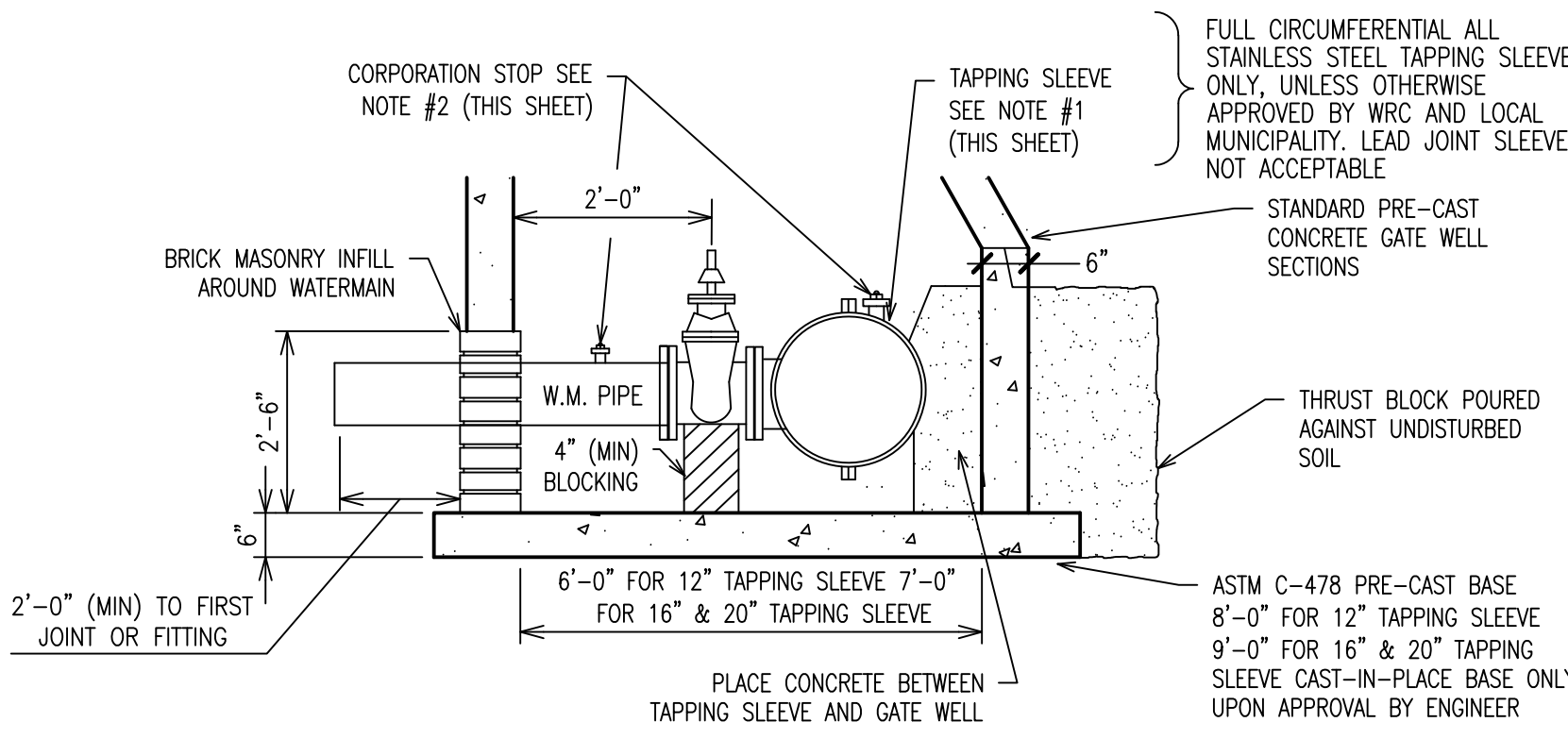
FRAME



PLAN GATE WELL TYPICAL



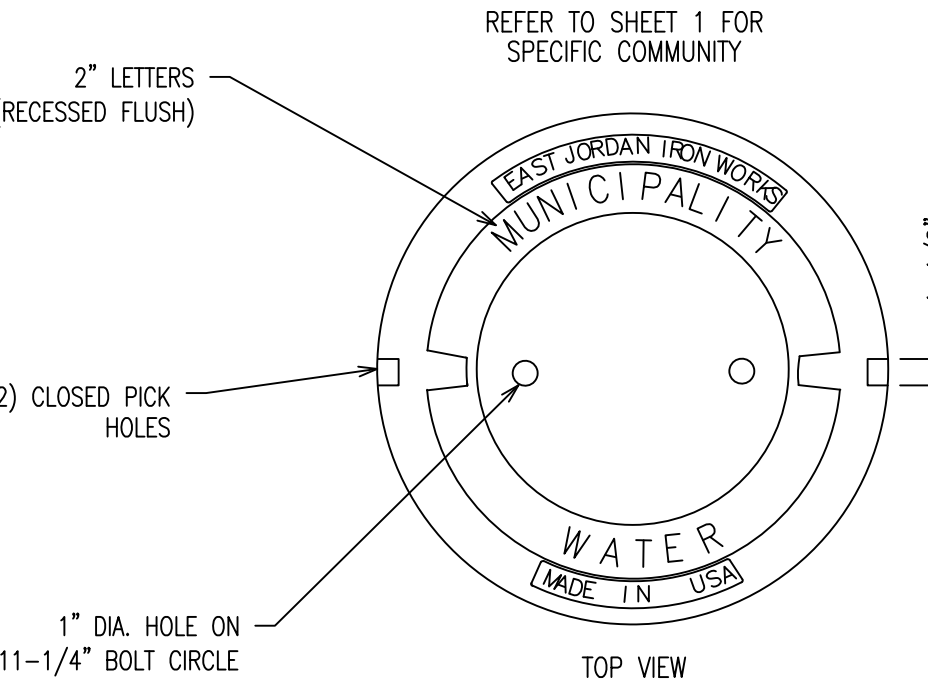
GATE WELL TOPS WITHIN PAVEMENT AREAS



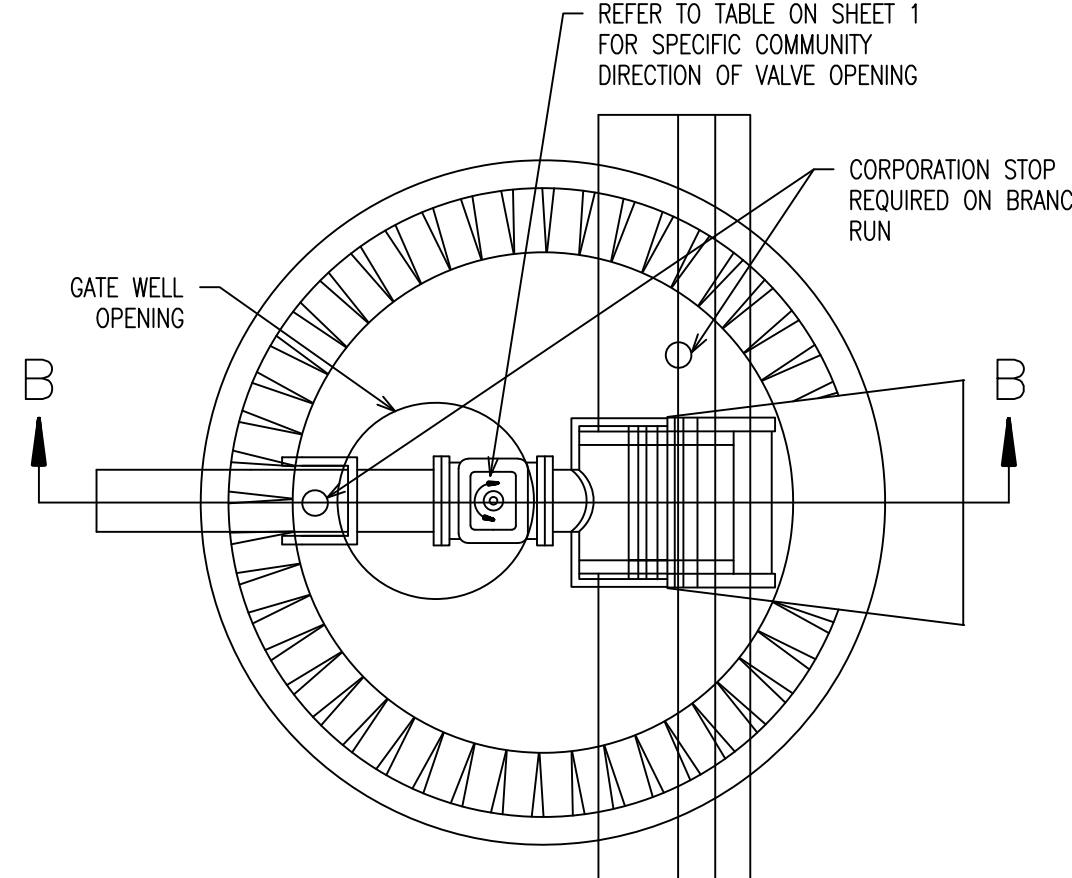
20" x 12", 20" x 8", 16" x 12", 16" x 8", 12" x 8"

TAPPING SLEEVE, VALVE & WELL

- NOTES:
1. REFER TO NOTE 7 OF "VALVE AND SLEEVE NOTES" ON SHEET 1.
  2. FOR PIPE SMALLER THAN 16" USE 1" CORPORATION STOP, FOR 16" PIPE OR LARGER USE 2" CORPORATION STOP WITH BRONZE SADDLE.
  3. WRC DOES NOT RECOMMEND SIZE ON SIZE TAPPING.




LETTERING LAYOUT FOR GATEWELL COVERS



PLAN TAPPING SLEEVE VALVE & WELL (TYPICAL)

REVISION BLOCK			
Rev.	Rev.	Rev.	Rev.
No.	By:	Date:	Description:
1	DL	03/23/15	FINAL CHANGES TO GATE VALVE STANDARDS, HYDRANT SPECIFICATIONS AND PIPE CLASS UPDATES
2	DL	01/03/17	UPDATE TO CORRECTION TO OPEN COMMERCE TOWNSHIP FROM RIGHT TO LEFT
3	DL	07/14/18	MARKING PER O. APPROV.
4	HRC	08/12/20	GENERAL UPDATE

ORIG. DATE:	01/01/01	 <b>WRC</b> WATER RESOURCES COMMISSIONER Jim Nash	ONE PUBLIC WORKS DRIVE, BLDG 96 WEST WATERFORD, MICHIGAN 48328-1907
SCALE:	NONE		
DESIGNED BY:	WRC		
DRAWN BY:	WRC Mapping		

SHEET NO.:	2 of 7
------------	--------