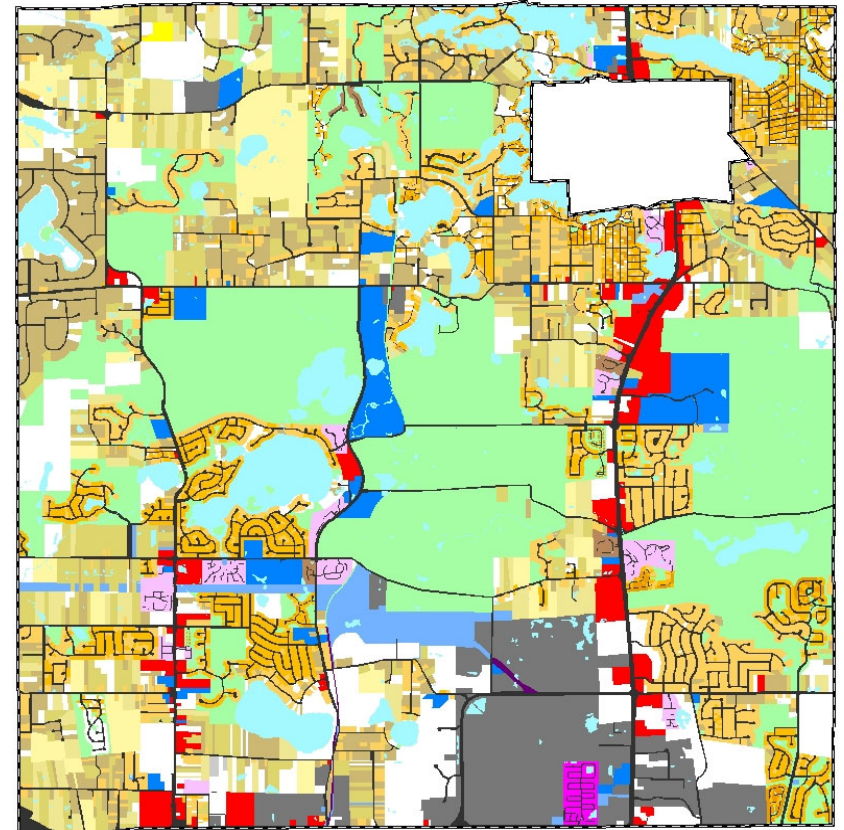
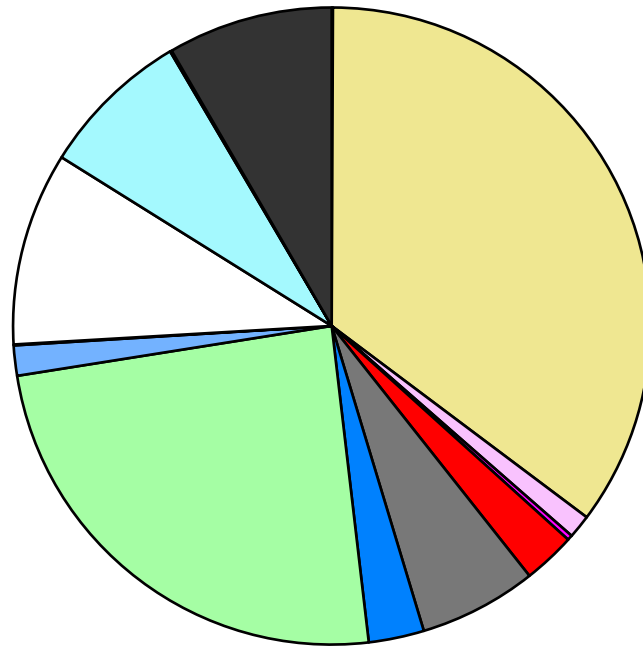


Land Use	Area (ac.)	Area (%)	Parcels	Parcels (%)
Agricultural	15.0	0.1%	1	0.0%
Single Family Residential	7,817.7	35.2%	11,056	86.6%
Multiple Family	265.1	1.2%	17	0.1%
Mobile Home Park	58.4	0.3%	1	0.0%
Commercial/Office	586.4	2.6%	223	1.7%
Industrial	1,330.4	6.0%	110	0.9%
Public/Institutional	626.4	2.8%	57	0.4%
Recreation/Conservation	5,414.5	24.4%	275	2.2%
Transp./Utility/Comm.	338.9	1.5%	46	0.4%
Extractive	8.7	0.0%	2	0.0%
Vacant	2,182.1	9.8%	972	7.6%
Water	1,698.8	7.6%		
Railroad Right-of-Way	18.5	0.1%		
Road Right-of-Way	1,862.5	8.4%		
Total	22,223.4	100.0%	12,760	100.0%

Single Family By Lot Size	Area (ac.)	Area (%)	Parcels	Parcels (%)
10 acres or greater	769.5	9.8%	41	0.4%
5 to 9.9 acres	694.7	8.9%	102	0.9%
2.5 to 4.9 acres	1,240.2	15.9%	348	3.1%
1 to 2.4 acres	1,780.9	22.8%	1,151	10.4%
14,000 to 43,559 sq. ft.	2,139.3	27.4%	4,376	39.6%
8,000 to 13,999 sq. ft.	1,005.1	12.9%	4,047	36.6%
Less than 8,000 sq. ft.	133.8	1.7%	987	8.9%
More than one unit per parcel	54.1	0.7%	4	0.0%
Single Family Sub-total	7,817.7	100.0%	11,056	100.0%

Land Use by Area

- Agricultural
- Single Family Residential
- Multiple Family
- Mobile Home Park
- Commercial/Office
- Industrial
- Public/Institutional
- Recreation/Conservation
- Transp./Utility/Comm.
- Extractive
- Vacant
- Water
- Railroad Right-of-Way
- Road Right-of-Way



For more information, maps, or questions about this data, please contact the Oakland County Planning at (248) 858-0720.