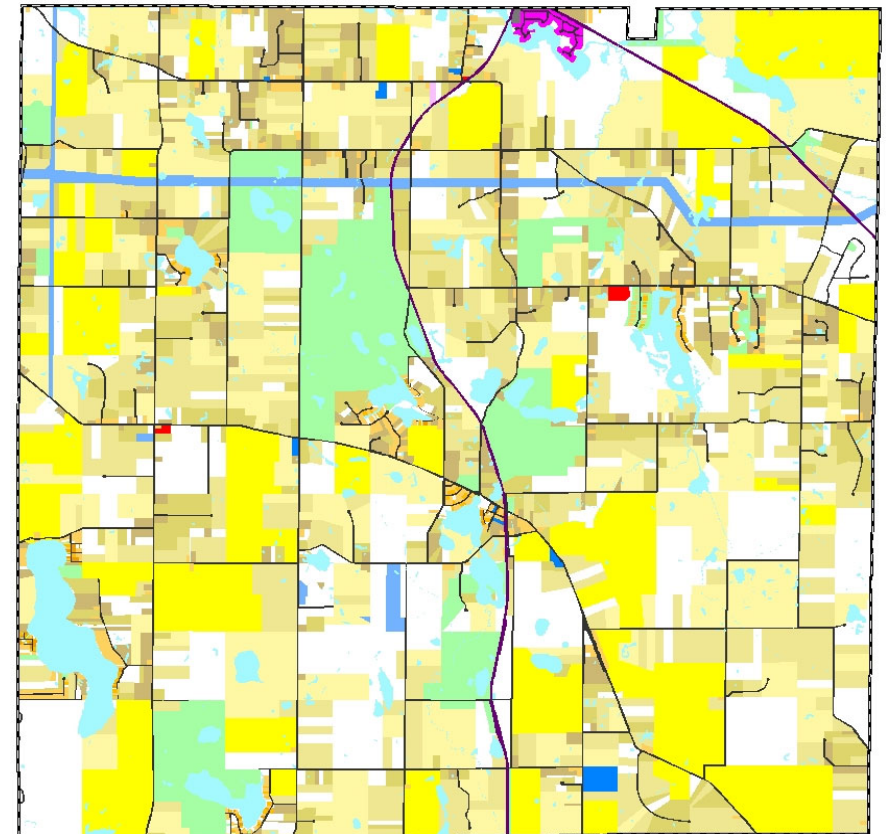
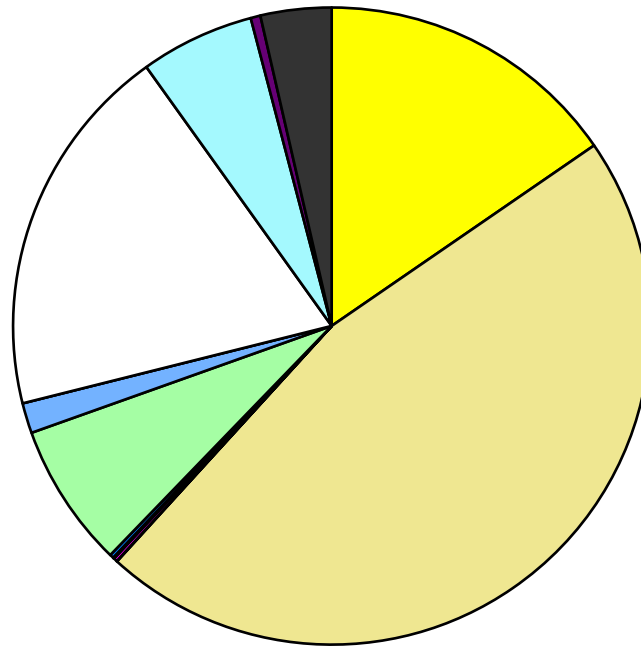


Land Use	Area (ac.)	Area (%)	Parcels	Parcels (%)
Agricultural	3,559.1	15.4%	101	3.1%
Single Family Residential	10,720.2	46.4%	2,371	72.6%
Multiple Family	4.2	0.0%	1	0.0%
Mobile Home Park	41.4	0.2%	140	4.3%
Commercial/Office	13.3	0.1%	3	0.1%
Industrial	3.9	0.0%	1	0.0%
Public/Institutional	45.6	0.2%	11	0.3%
Recreation/Conservation	1,691.7	7.3%	80	2.4%
Transp./Utility/Comm.	356.4	1.5%	19	0.6%
Extractive				
Vacant	4,396.1	19.0%	540	16.5%
Water	1,336.3	5.8%		
Railroad Right-of-Way	114.5	0.5%		
Road Right-of-Way	833.0	3.6%		
<b>Total</b>	<b>23,115.7</b>	<b>100.0%</b>	<b>3,267</b>	<b>100.0%</b>

Single Family By Lot Size	Area (ac.)	Area (%)	Parcels	Parcels (%)
10 acres or greater	4,027.5	37.6%	213	9.0%
5 to 9.9 acres	3,800.9	35.5%	450	19.0%
2.5 to 4.9 acres	1,570.4	14.6%	408	17.2%
1 to 2.4 acres	952.6	8.9%	551	23.2%
14,000 to 43,559 sq. ft.	325.1	3.0%	541	22.8%
8,000 to 13,999 sq. ft.	31.6	0.3%	121	5.1%
Less than 8,000 sq. ft.	12.2	0.1%	87	3.7%
More than one unit per parcel				
<b>Single Family Sub-total</b>	<b>10,720.2</b>	<b>100.0%</b>	<b>2,371</b>	<b>100.0%</b>

#### Land Use by Area

- Agricultural
- Single Family Residential
- Multiple Family
- Mobile Home Park
- Commercial/Office
- Industrial
- Public/Institutional
- Recreation/Conservation
- Transp./Utility/Comm.
- Extractive
- Vacant
- Water
- Railroad Right-of-Way
- Road Right-of-Way



For more information, maps, or questions about this data, please contact the Oakland County Planning at (248) 858-0720.